



Tittershall Lodge, Kingswood Lane, Ludgershall, Aylesbury, HP18 9FY

To Let | 5,224 sq ft

Office/Leisure/Events

**Tittershall Lodge, Kingswood Lane,
Ludgershall, Aylesbury, HP18 9FY**

TO LET

Summary

- Size: 5,224 sq ft
- Rent: £12.50 per sq ft
- EPC: B

Further information

- [View details on our website](#)
- [Microsite](#)

Viewings and Further Information



James Garvey
01494 460258 | 07471996320
jg@chandlergarvey.com



Description

The Shooting Lodge extends to approximately 5,200 sq ft over two floors. On the ground floor a porch area leads through into an entrance hall, which has a bar area and a stair case leading to the first floor. There is a large dining room with open fire place and French doors leading out to a patio area. Adjoining the dining room is a large commercial kitchen. There are a number of WCs on the ground floor along with a shower room and utility room. On the first floor there is a large landing and seven separate rooms, two of which have an ensuite bathroom. The Lodge is heated by way of an oil-fired boiler and drainage is by way of a septic tank. The Lodge is connected to mains water and electricity.

Location

Aylesbury is the County Town of Buckinghamshire and is approximately 44 miles northwest of central London 23 miles from Oxford and 15 miles south of Milton Keynes. The town is on the junctions of the A41 the A413 and A418 with access to the M40 M1 and M25 motorways within a 20 minute drive. The Chiltern Railway Line provides a direct rail service to London Marylebone of approximately 55 minutes.

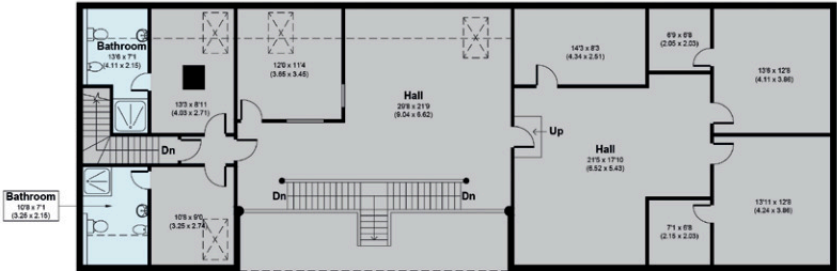


Money Laundering and Identity Checks

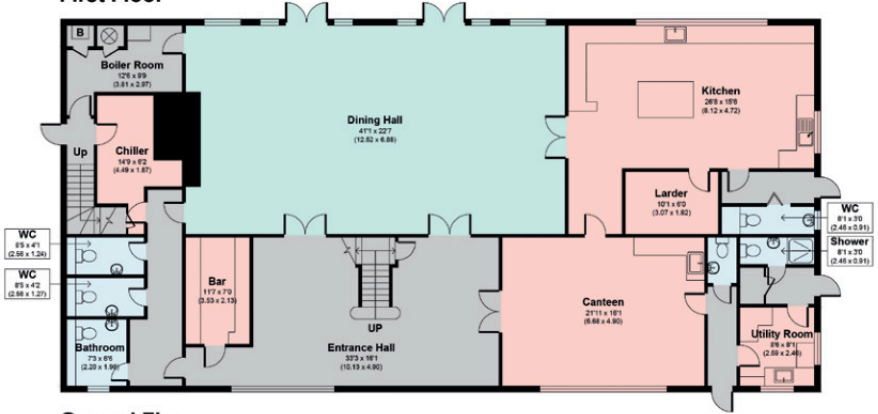
Money Laundering Regulations require Chandler Garvey to conduct checks on all tenants. Prospective tenants will need to provide proof of identity and residence.

Floor plan

- Bedrooms
- Bathroom
- Reception
- Kitchen
- Circulation



First Floor



Ground Floor

The Lodge HP18

APPROXIMATE GROSS INTERNAL AREA 5224 SQ FT / 485.32 SQ M INC. STORE
 BIDWELLS: THIS IMAGE IS ILLUSTRATIVE ONLY - NOT TO SCALE. COPYRIGHT: THE IMAGE TAILOR LTD. 2019.



Outbuildings



Keepers Lodge HP18

APPROXIMATE GROSS INTERNAL AREA 2045 SQ FT / 190 SQ M INC. STORE
 APPROXIMATE GROSS Outbuilding AREA 1911 SQ FT / 177.55 SQ M

BIDWELLS: THIS IMAGE IS ILLUSTRATIVE ONLY - NOT TO SCALE. COPYRIGHT: THE IMAGE TAILOR LTD. 2019.



