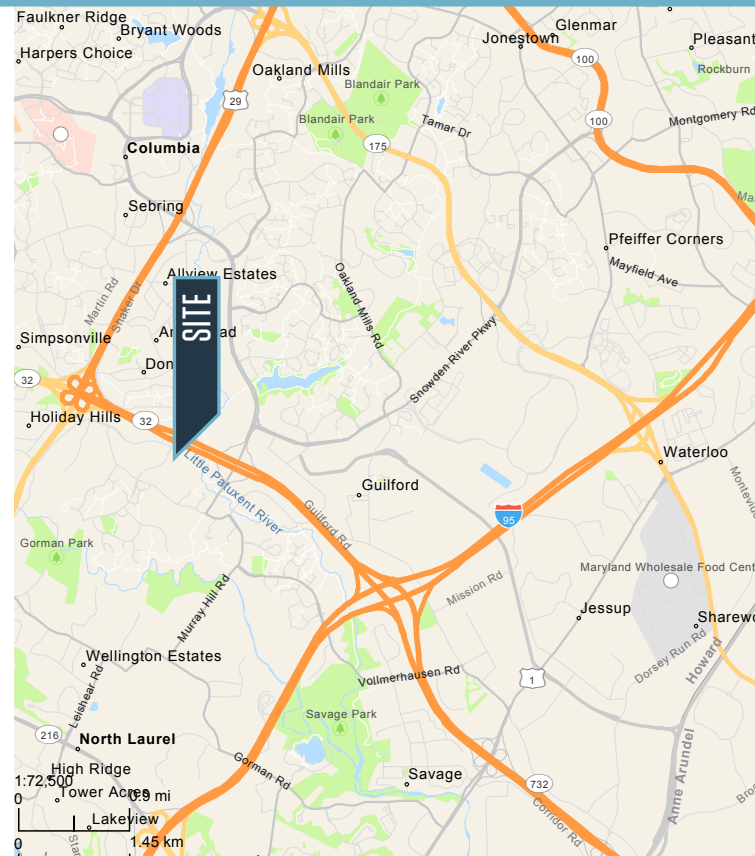




OFFICE FOR LEASE

PROPERTY HIGHLIGHTS

- **Suite G118: 1,887 SF Available**
- **Suite E245: 2,000 SF Available**
- **Electric Service:** 150-amp, 120/208, 3 phase
- **HVAC:** Individually controlled systems; electrical package rooftop units
- **Land Area:** 5.78 acres
- **Access:** Individual front entry doors
- **Parking:** 4 spaces per 1,000 SF
- **Roof:** Rubber membrane
- **Sprinkler:** Wet system
- **Year Built:** 1985
- **Zoning:** NT
- **Exterior Construction:** Brick/masonry
- **Land Area:** 5.78 acres



Spence Daw
sdaw@klnb.com
443-574-1429

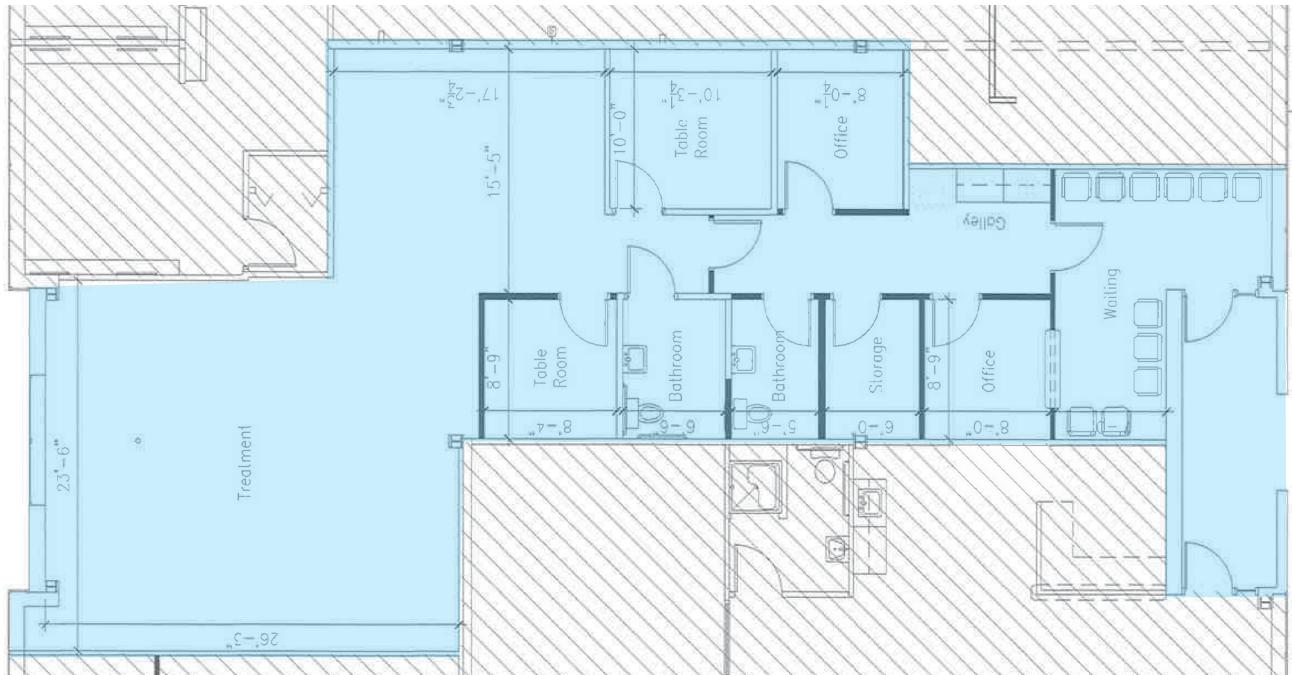
Abby Glassberg
aglassberg@klnb.com
443-574-1433

9881 Broken Land Pkwy, #300
Columbia, MD 21046
klnb.com

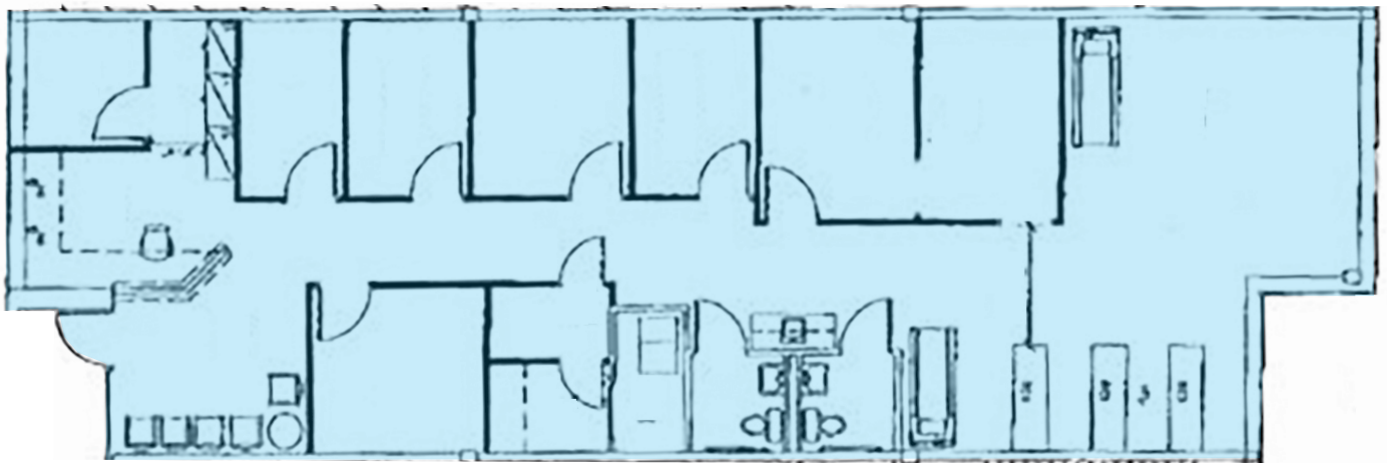
10015 OLD COLUMBIA RD

Columbia, MD 21046 | Howard County

FLOOR PLAN | SUITE G118 | 1,887 RSF



FLOOR PLAN | SUITE E245 | 2,000 RSF



Spence Daw
sdaw@klnb.com
443-574-1429

Abby Glassberg
aglassberg@klnb.com
443-574-1433

PHOTOS

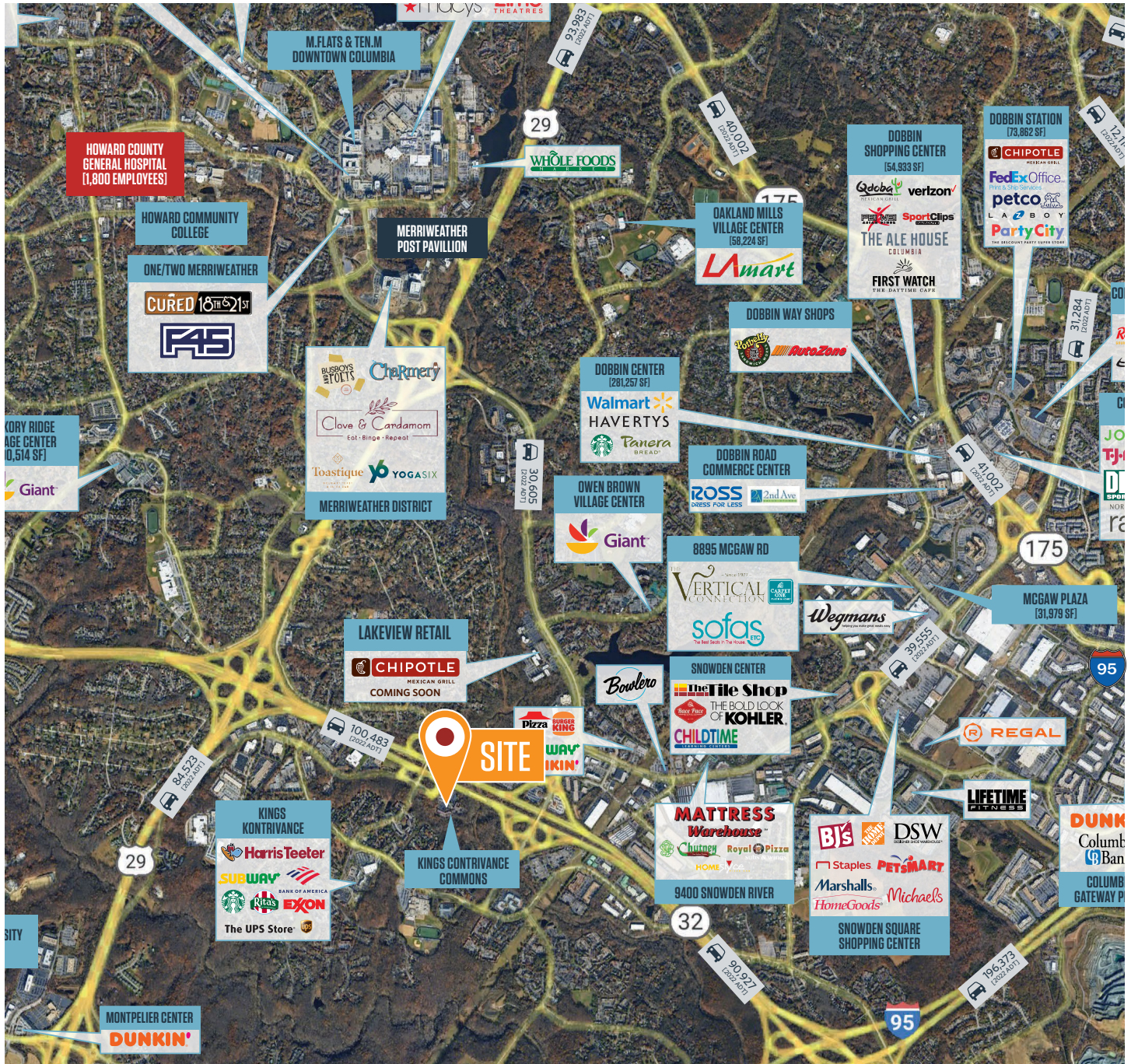


10015 OLD COLUMBIA RD

Columbia, MD 21046 | Howard County



MARKET AERIAL



While we have no reason to doubt the accuracy of any of the information supplied, we cannot, and do not, guarantee its accuracy. All information should be independently verified prior to a purchase or lease of the property. We are not responsible for errors, omissions, misuse, or misinterpretation of information contained herein and make no warranty of any kind, express or implied, with respect to the property or any other matters.

Spence Daw
sdaw@klnb.com
443-574-1429

Abby Glassberg
aglassberg@klnb.com
443-574-1433

9881 Broken Land Pkwy, #300
Columbia, MD 21046
klnb.com