

# 285 GEARY STREET

SOUTH BLOCK BETWEEN POWELL AND STOCKTON STREETS

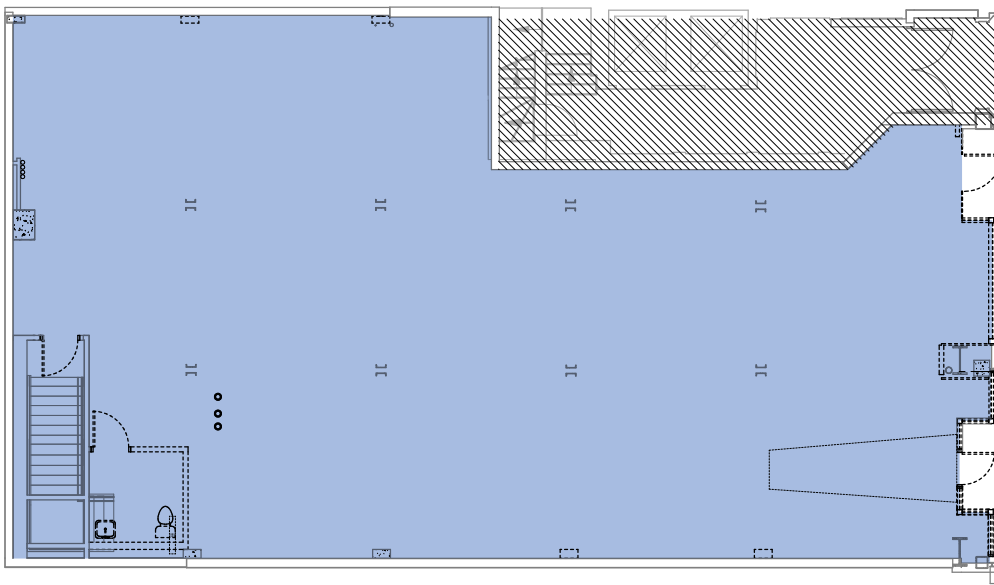
Prime Retail located directly on San Francisco's legendary Union Square



Lantern

Real Estate Advisors + Partners

## GROUND FLOOR



Geary Street

### PREMISES

Ground Floor – 2,778 SF

Lower Level – 1,131 SF

TOTAL – 3,909 SF

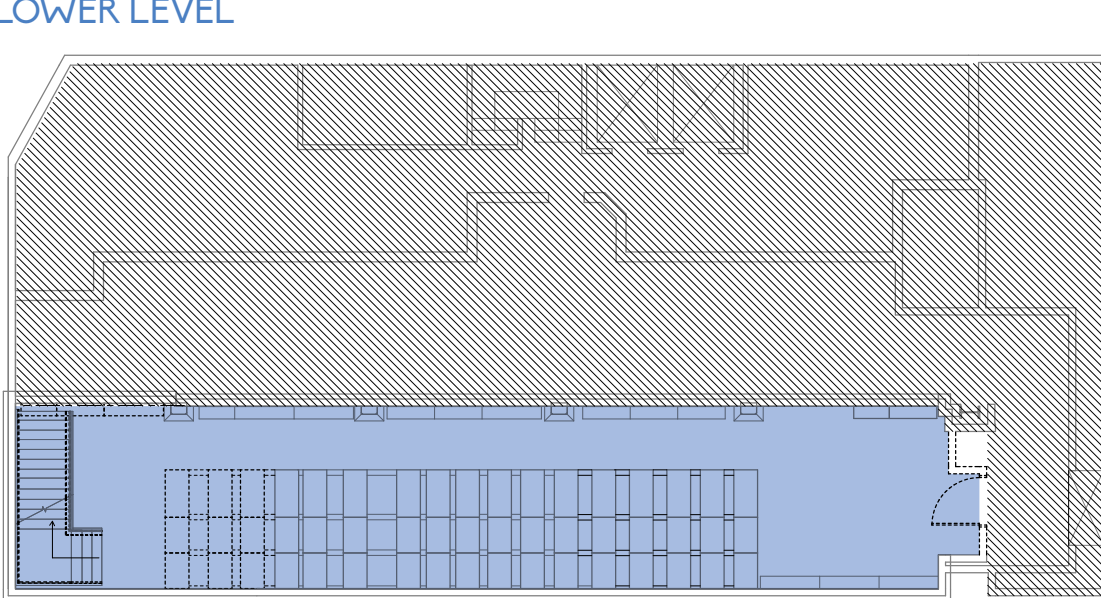
Frontage – 35' on Geary Street

Ceiling Height – 15'9" on Ground Floor, 8'6" on Lower Level

Possession – Immediately Arranged

Sublease Opportunity through August 2027

## LOWER LEVEL



### NEIGHBORING TENANTS

Apple - Nike - Louis Vuitton - Gucci

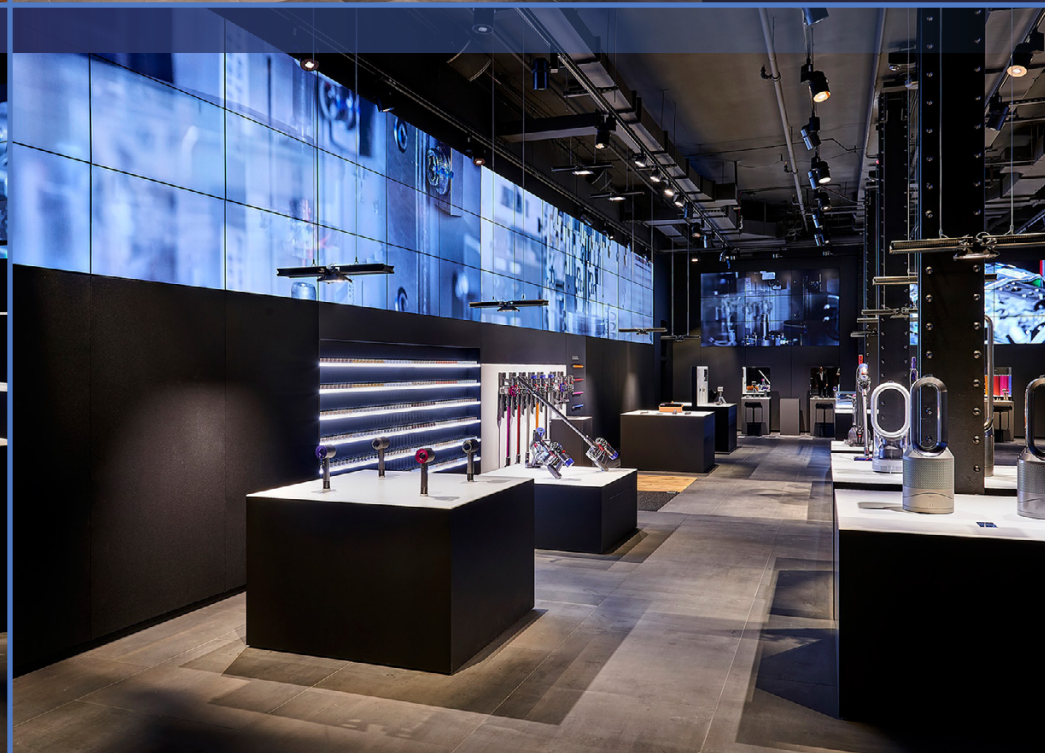
Moncler - Bulgari - Neiman Marcus

Loro Piana - Saks Fifth Avenue - Tiffany & Co.

### DETAILS

SHOWINGS STRICTLY BY APPOINTMENT ONLY

Please be respectful of store team





MATTHEW SEIGEL  
 matthew@lanterncompany.com

RACHEL EDMUNDS  
 rachel@lanterncompany.com

+1 (646)-970-3223  
 www.lanterncompany.com

NOTICE: This information has been secured from sources we believe to be reliable but we make no representations, warranties, express or implied, as to the accuracy of the information. Listing broker has been given enough information to provide only a preliminary interest in the property. The materials are not to be considered fact. The information contained herein is not a substitute for thorough due diligence investigation. References to square footage, zoning, use, or age are approximate. Please contact the San Francisco Planning Department to verify zoning at (415) 558-6378, as neither subleasing broker or landlord represent that this space is suitable for your use. Tenant or Buyer must verify the information at their own expense and bears all the risk for any inaccuracies. By receiving these materials you are agreeing to the disclaimers set forth herein. Lantern Holdings, LLC has been engaged solely as a consultant on behalf of the potential sublessor.