

5380

EISENHOWER

ALEXANDRIA, VA



**FOR LEASE**

WAREHOUSE + OFFICE SPACE



# BUILDING OVERVIEW



## Where Access Drives Advantage

- Immediate access to Beltway (I-495)
- Connectivity to I-95 corridor
- Quick access to:
  - » Old Town Alexandria
  - » National Landing
  - » Washington DC



# PROPERTY FEATURES

---

## Key Highlights



Drive-in Loading



18' clear warehouse



Zoned OCH (SUP for Industrial)



Immediate access to I-495/I-95



2 minute walk to Van Dorn Metro Station



Frontage on Eisenhower Ave



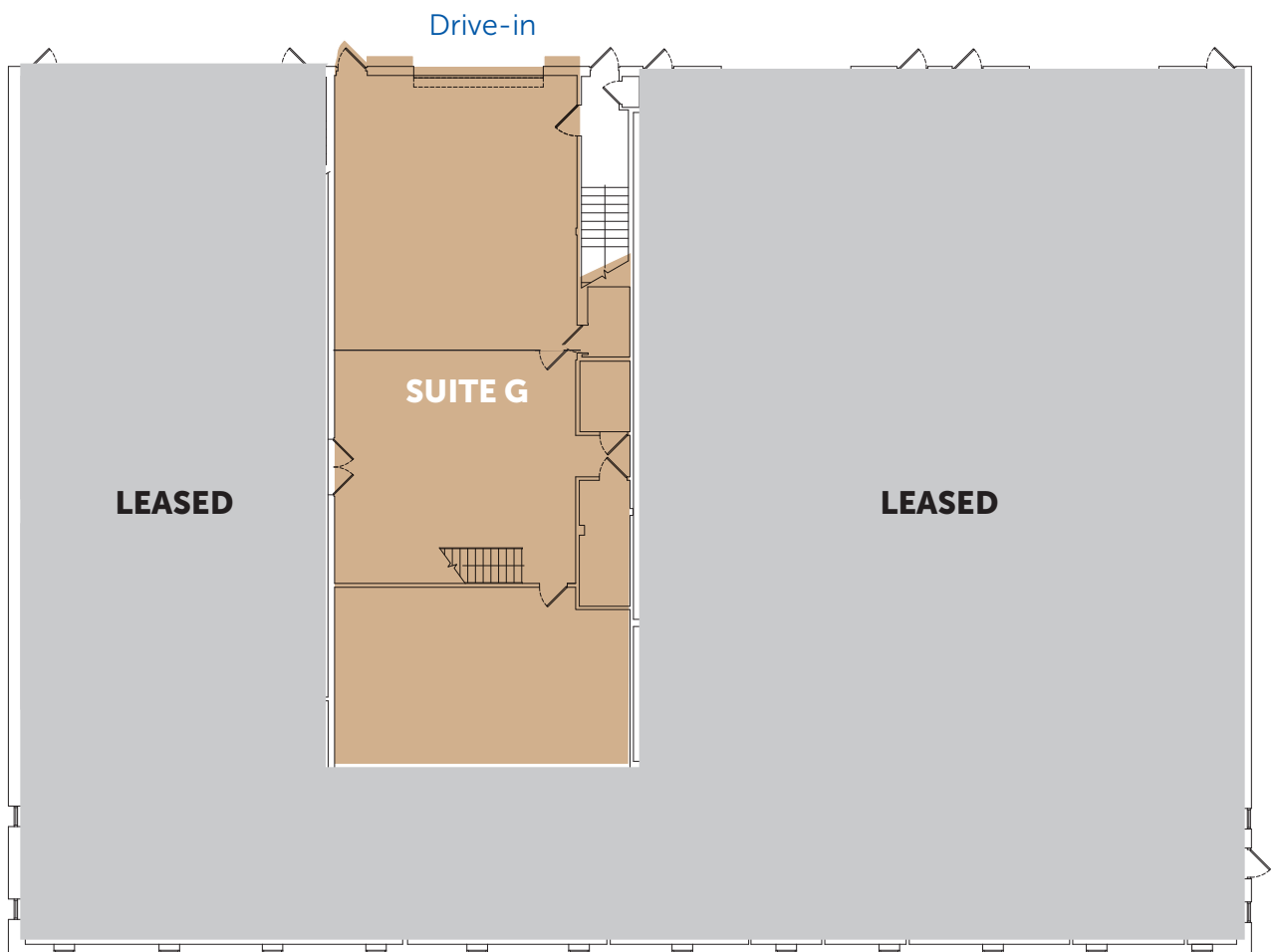
# AVAILABILITIES

---

## Building One—First Floor

---

- Warehouse Suite
- Suite G: 2,500 SF
- Drive-In Loading



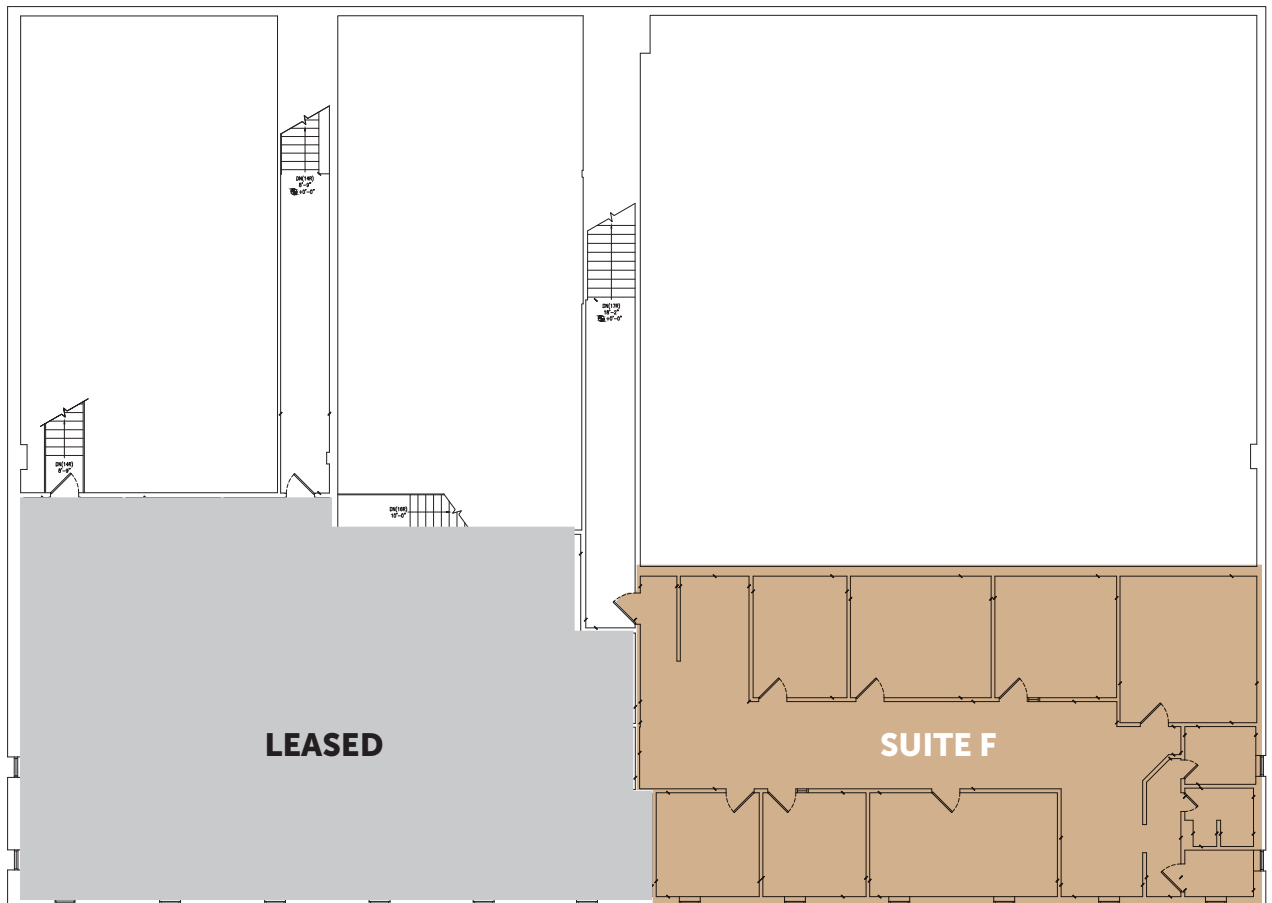
# AVAILABILITIES

---

## Building One—Second Floor

---

- Office Suite
- Suite F: 2,500 SF



# AMENITIES



VAN DORN PLAZA

SUBWAY Wendy's

PAISANO'S TACO BELL

SAFEWAY

BACKLICK PLAZA +

VOCELL PIZZA fresh world MCDONALD'S

ExonMobil BURGER KING

THE ST-JAMES

5380  
EISENHOWER

HENRY JONES tropical SMOOTHIE CAFE STARBUCKS

Red Lobster THE HOME DEPOT

Mixing Bowl

SPRINGFIELD TOWN CENTER

SUBWAY Burlington DAVE'S RESTAURANT

Nando's SILVER LINER

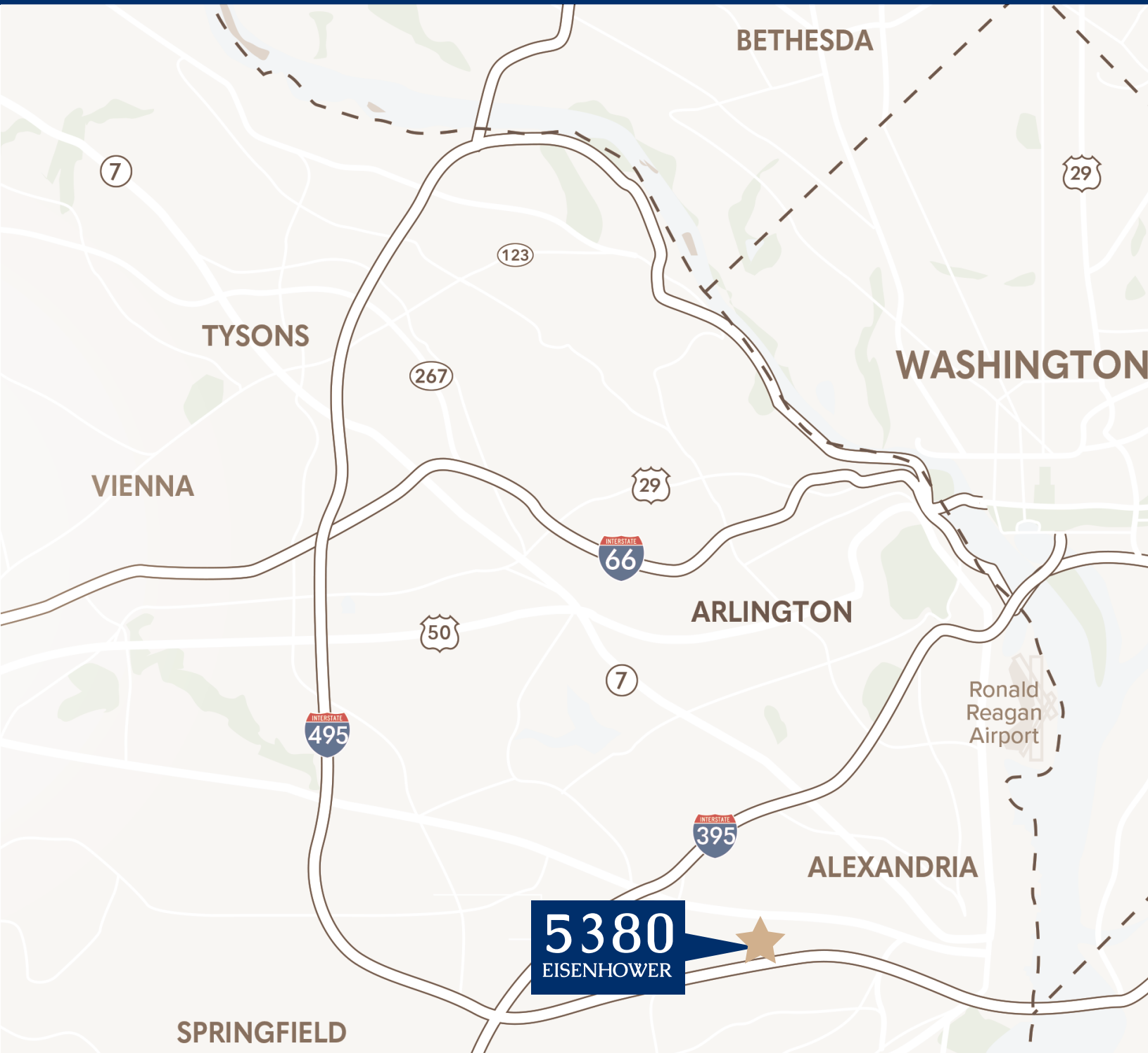
MAGGIANO'S CHIPOTLE REGAL

TARGET Staples THE HOME DEPOT

&pizza macys YARD HOUSE

POPEYES mezeh BEST BUY

# REGIONAL MAP



**5380**  
EISENHOWER

**1.3 miles**  
to 495

**2.5 miles**  
to 395

**9.3 miles**  
to Reagan

**11 miles**  
to Downtown DC

# 5380

## EISENHOWER

ALEXANDRIA, VA

### GET IN CONTACT

---

**ANDREW HASSETT**

703.705.2921

[andrew.hassett@streamrealty.com](mailto:andrew.hassett@streamrealty.com)

**ANABELLE GARTLAND**

703.574.3621

[anabelle.gartland@streamrealty.com](mailto:anabelle.gartland@streamrealty.com)



Copyright © 2026 Stream Realty Partners, All rights reserved.

*The information contained herein was obtained from sources believed reliable; however, Stream Realty Partners, L.P. make no guarantees, warranties, or representations as to the completeness or accuracy thereof. The presentation of this property is submitted subject to errors, change of price, or conditions, prior sale or lease, or withdrawal without notice.*