



PROPERTY DETAILS

- Newly renovated building, new ownership and management
- Class A office finishes
- \$23.00/r.s.f. NNN base rent + \$10.00/s.f. CAM/Opex + electric + janitorial
- +/- 3,228 SF available for lease on the 1st floor
- +/- 2,600 SF available for lease on the 2nd floor
- Owner is a tenant, and is on-site
- Professional property management
- Covered and surface parking available
- 3/4 mile to I-95/45th St. interchange
- 1.7 miles to US1, 1.3 miles to Tri-Rail Station

ABOUT PROPERTY



PRICE

\$23.00/SF/yr (NNN)



YEAR BUILT

1989



AVAILABLE SF

2,600 - 5,828 SF



PARKING

3.21/1,000



LOCATION

1720 E Tiffany Dr, West Palm Beach

For more information:

Daniel Silver

561.510.2124 | Dsilver@Bergercommercial.Com
bergercommercial.com

Michael Feuerman, Esq., CCIM, SIOR

561.430.2303 | Mfeuerman@Bergercommercial.Com





PROPERTY DESCRIPTION

+/- 3,228 SF available for lease on the 1st floor & +/- 2,600 SF available for lease on the 2nd floor

PROPERTY HIGHLIGHTS

- Newly renovated building, new ownership and management
- Class A office finishes
- \$23.00/r.s.f. NNN base rent + \$10.00/s.f. CAM/Opex + electric + janitorial
- +/- 3,228 SF available for lease on the 1st floor
- +/- 2,600 SF available for lease on the 2nd floor
- Owner is a tenant, and is on-site
- Professional property management
- Covered and surface parking available
- 3/4 mile to I-95/45th St. interchange
- 1.7 miles to US1, 1.3 miles to Tri-Rail Station

OFFERING SUMMARY

Lease Rate:	\$23 SF/yr (NNN)
Number of Units:	2
Available SF:	2,600 - 5,828 SF
Lot Size:	1.12 Acres
Building Size:	19,344 SF

DEMOGRAPHICS	1 MILE	3 MILES	5 MILES
Total Households	3,175	44,830	94,188
Total Population	8,460	114,375	224,161
Average HH Income	\$71,491	\$75,901	\$89,519

For more information:

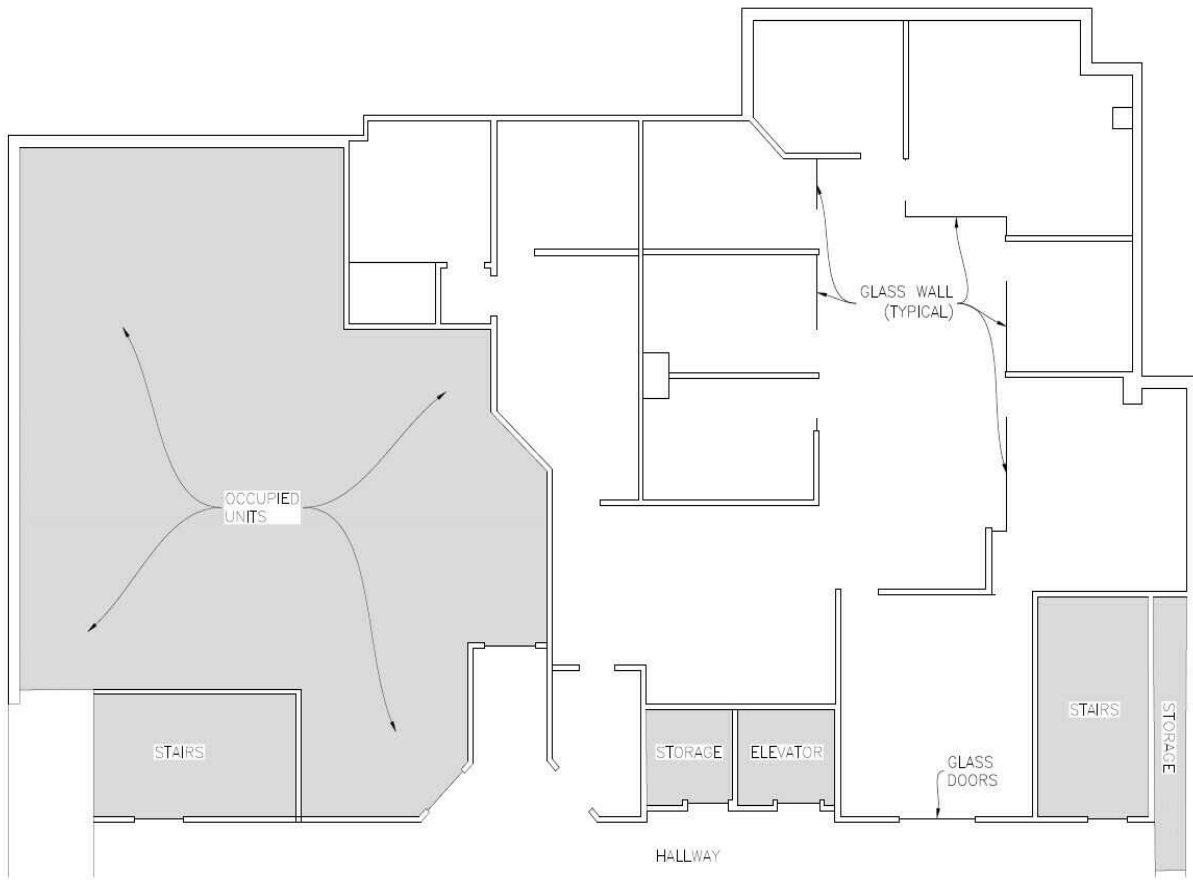
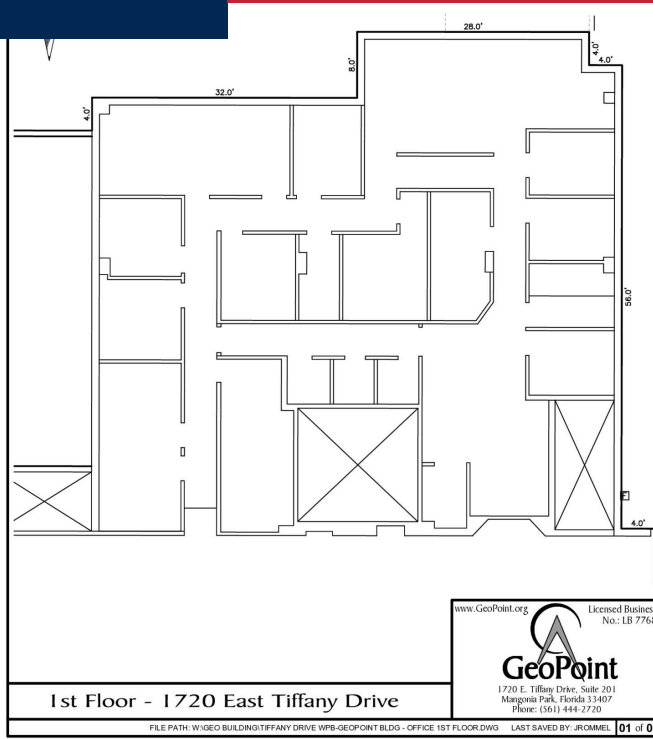
Daniel Silver

561.510.2124 | dsilver@Bergercommercial.Com
bergercommercial.com

Michael Feuerman, Esq., CCIM, SIOR

561.430.2303 | Mfeuerman@Bergercommercial.Com





For more information:

Daniel Silver

561.510.2124 | dsilver@Bergercommercial.Com
bergercommercial.com

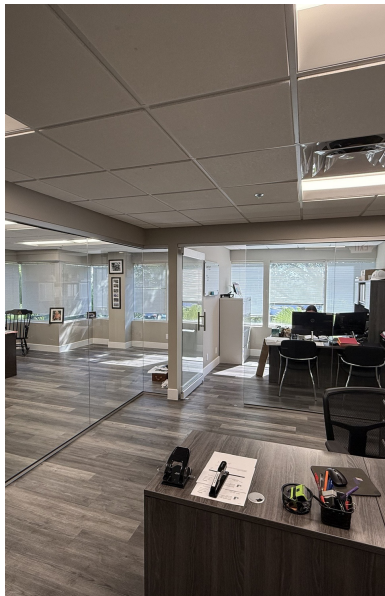
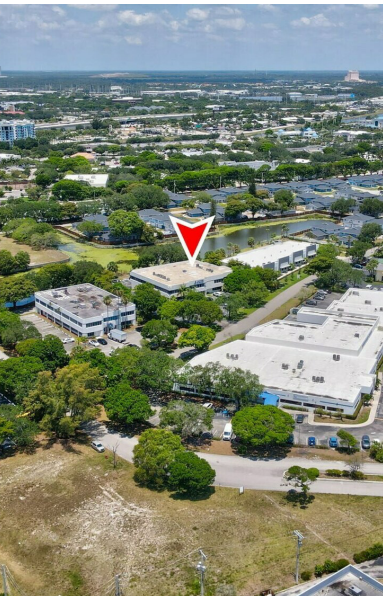
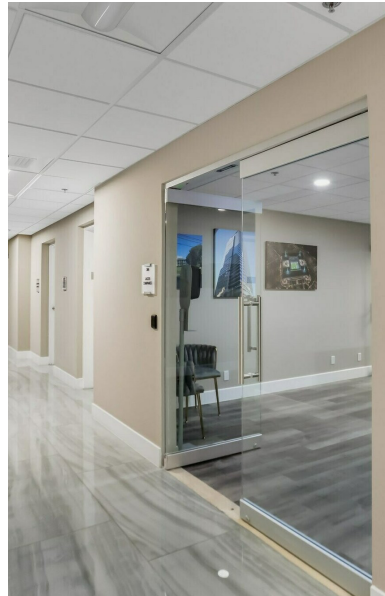
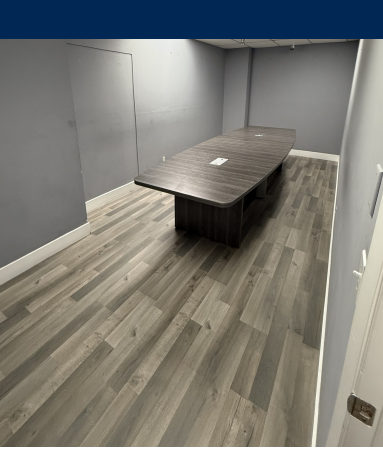
Michael Feuerman, Esq., CCIM, SIOR

561.430.2303 | Mfeuerman@Bergercommercial.Com



MANGONIA PARK

ADDITIONAL PHOTOS



For more information:

Daniel Silver

561.510.2124 | dsilver@Bergercommercial.Com
bergercommercial.com

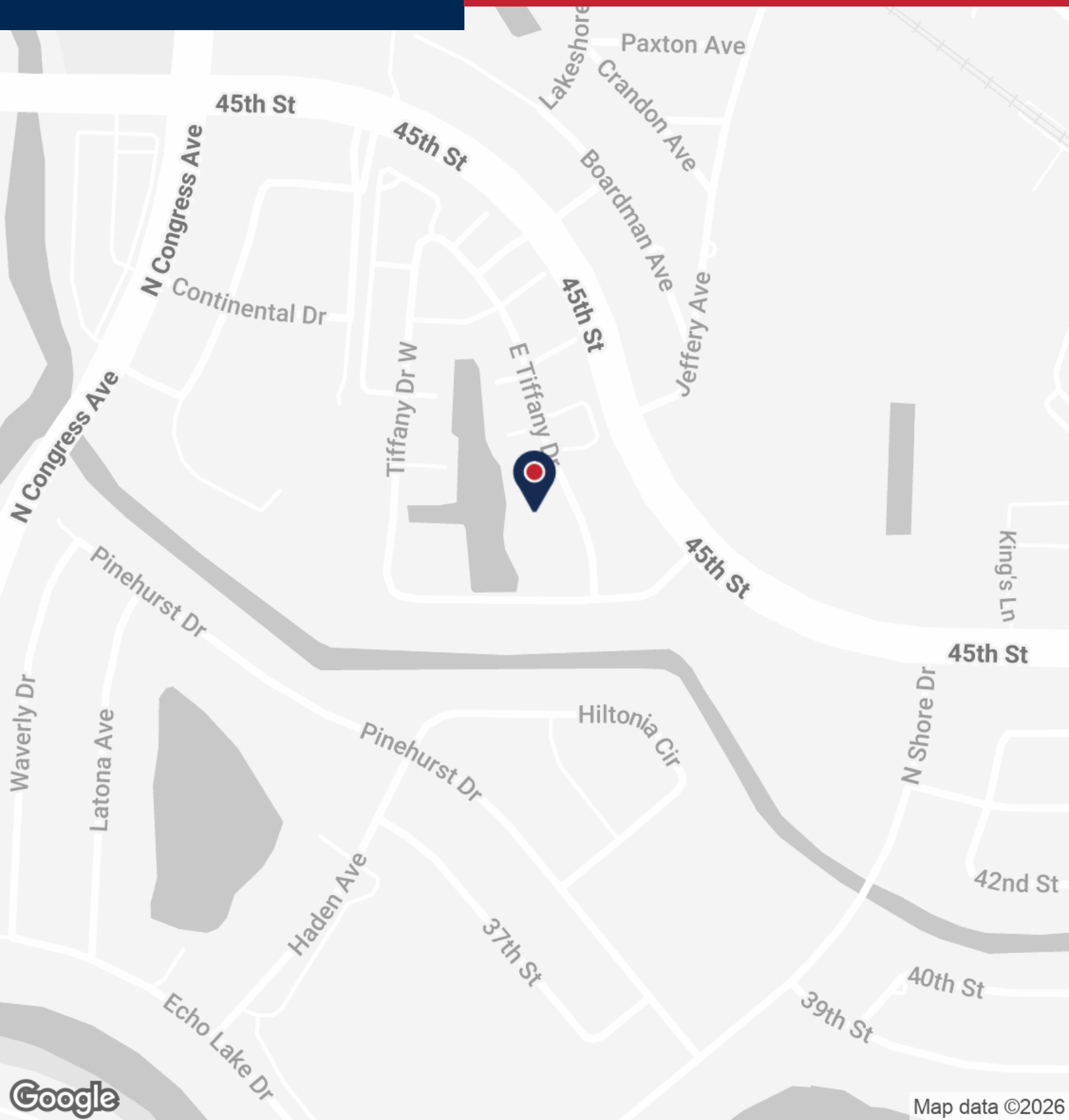
Michael Feuerman, Esq., CCIM, SIOR

561.430.2303 | mfeuerman@Bergercommercial.Com



COMMERCIAL BROKERAGE AND PROPERTY MANAGEMENT

Information furnished regarding this property is from sources deemed reliable, but no warranty or representation as to the accuracy thereof and it is submitted subject to errors, omissions, prior sale, lease or withdrawal without prior notice.



For more information:

Daniel Silver

561.510.2124 | dsilver@Bergercommercial.Com
bergercommercial.com

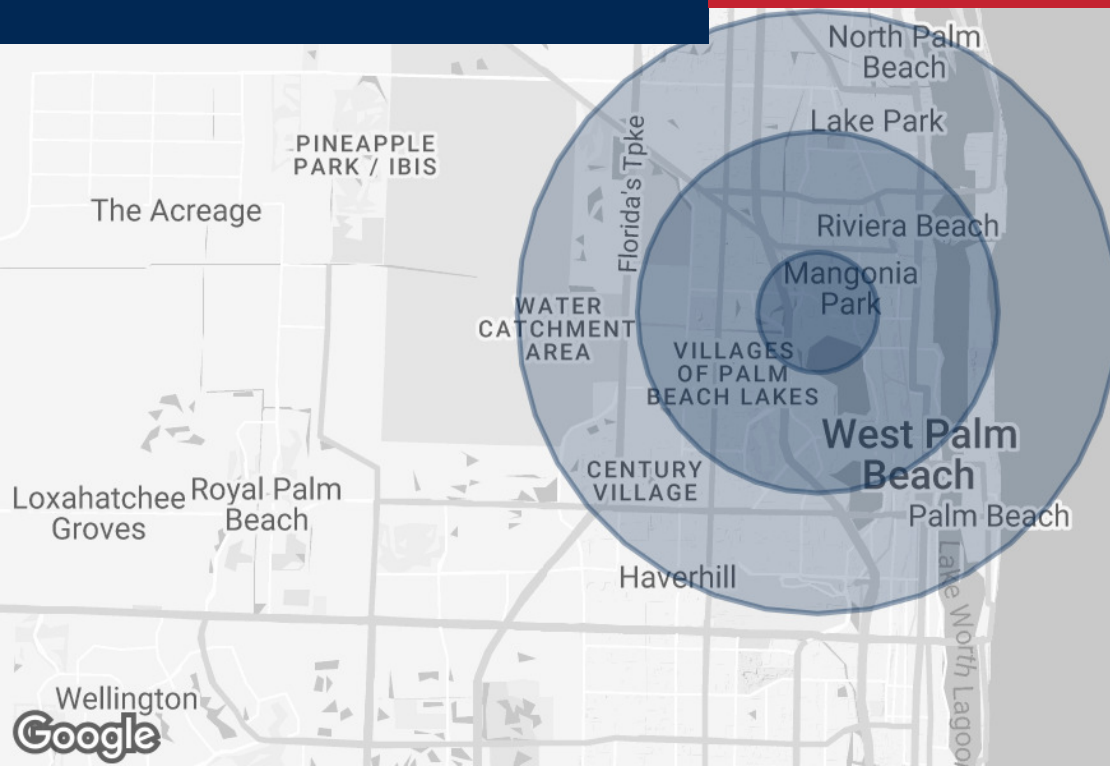
Michael Feuerman, Esq., CCIM, SIOR

561.430.2303 | Mfeuerman@Bergercommercial.Com



MANGONIA PARK

DEMOGRAPHICS MAP & REPORT



Map data ©2026 Google

POPULATION	1 MILE	3 MILES	5 MILES
Total Population	8,460	114,375	224,161
Average Age	40	40	43
Average Age (Male)	38	38	42
Average Age (Female)	41	41	44

HOUSEHOLDS & INCOME	1 MILE	3 MILES	5 MILES
Total Households	3,175	44,830	94,188
# of Persons per HH	2.7	2.6	2.4
Average HH Income	\$71,491	\$75,901	\$89,519
Average House Value	\$280,891	\$339,369	\$427,895

Demographics data derived from AlphaMap

For more information:

Daniel Silver

561.510.2124 | dsilver@Bergercommercial.Com
bergercommercial.com

Michael Feuerman, Esq., CCIM, SIOR

561.430.2303 | Mfeuerman@Bergercommercial.Com



COMMERCIAL BROKERAGE AND PROPERTY MANAGEMENT