





Waterfront Office Space Sausalito For Lease

20 Liberty Ship Way, Ste 210, Sausalito, 94965

Jen Bremer, CEO (DRE:01209572)  +1 415-317-4292  JBremer@WaldmanGroup.com

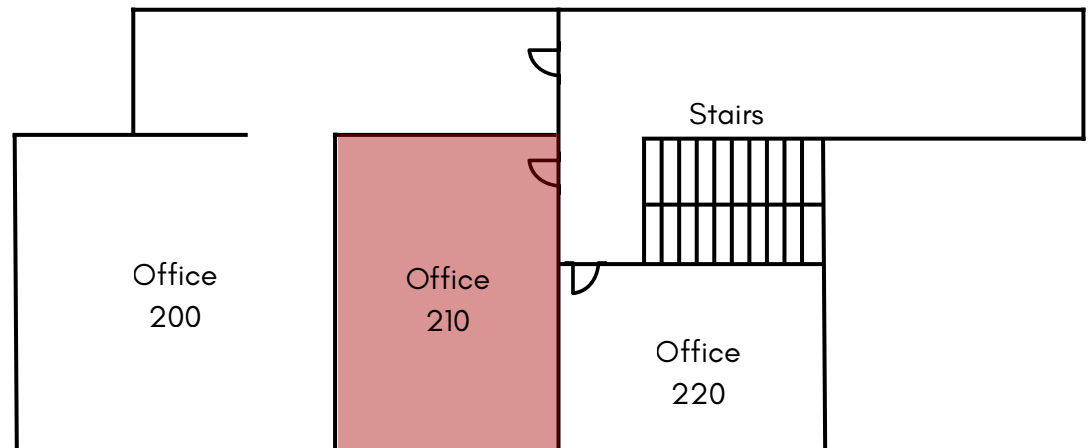
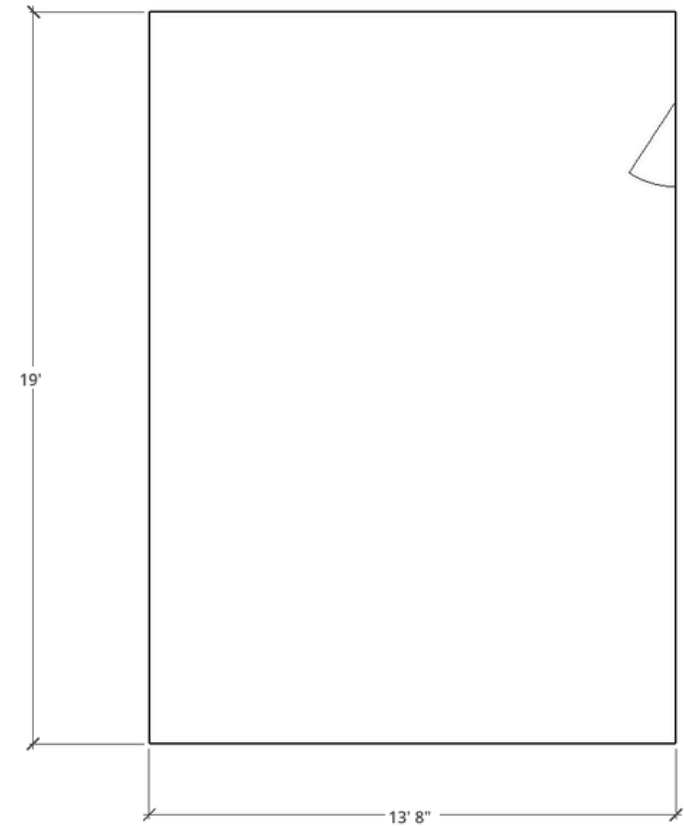
20 Liberty Ship Way | Suite 210

Street Address	20 Liberty Ship Way, Suite 210, Sausalito, 94965
Unit Size	282±sf
Lease Rate	\$930/mo
Operating Expenses	\$100/mo
Security Deposit	Equal to last month's rent
Zoning	Office use
Available	Immediately

Property Features

- Second-floor, Private Office in Executive Annex
- Easy Access to All Entrances
- Floor to Ceiling Windows
- Wired for Comcast and AT&T (Tenant 's account)
- Heated and Air-Conditioned Space
- Shared restrooms
- Renovated Historic Building
- Secure Building Entry
- Ample Parking for Cars and Bicycles
- Locking Mailboxes and Security Cameras
- Common areas cleaned 5 days a week
- Suite Signage and Tenant Directory
- Fully Sprinklered
- Upgraded exterior LED lighting
- Well-maintained Landscaping surrounding the building
- Easy access to Highway 101
- Abundance of Walking and Bike Trails

Floorplan





Sausalito

Sausalito is a picturesque waterfront town nestled just across the Golden Gate Bridge from San Francisco. This charming locale is known for its stunning views of the bay, quaint marinas, and a vibrant array of houseboats that line its shores. Sausalito boasts a Mediterranean-like climate, making it an ideal spot for outdoor activities and leisurely strolls along the waterfront, with a beach just walking distance away. The town's streets are dotted with unique boutiques, art galleries, and an eclectic mix of restaurants and cafes, offering a blend of culinary delights. Local favorites include Le Garage, Fish and Equator Coffee. For convenience there is a Mollie Stone's Market nearby and a US post office a short distance away. The Sausalito Ferry Terminal, located in downtown Sausalito, offers regular ferry service to and from San Francisco's Ferry Building and Pier 41. For those traveling by car, Sausalito is easily accessible via Highway 101, which runs north-south through Marin County, leading directly into San Francisco.

