

FIFTY TWO VANDERBILT



DIRECT ACCESS TO
GRAND CENTRAL

UNRIVALED
ACCESS IN
THE HEART OF
GRAND CENTRAL



Entire
21st Floor
Available
for Direct Lease

Top Floor

FIFTY TWO VANDERBILT



Entire 21st Floor
8,138 RSF
Available January 2026



Direct access
to Grand
Central
Station



Tenant
branding and
signage



Neighborhood
amenities



Efficient
floorplates



13' ceiling
heights



Exclusive
outdoor
terrace



Skylight



Club Fifty
Two Amenity
access

KELLI BERKE
+1 212 841 7718

kelli.berke@cushwake.com

JOSHUA BRANHAM
+1 212 698 5625

joshua.branham@cushwake.com

MITCH ARKIN
+1 212 841 7522

mitchell.arkin@cushwake.com

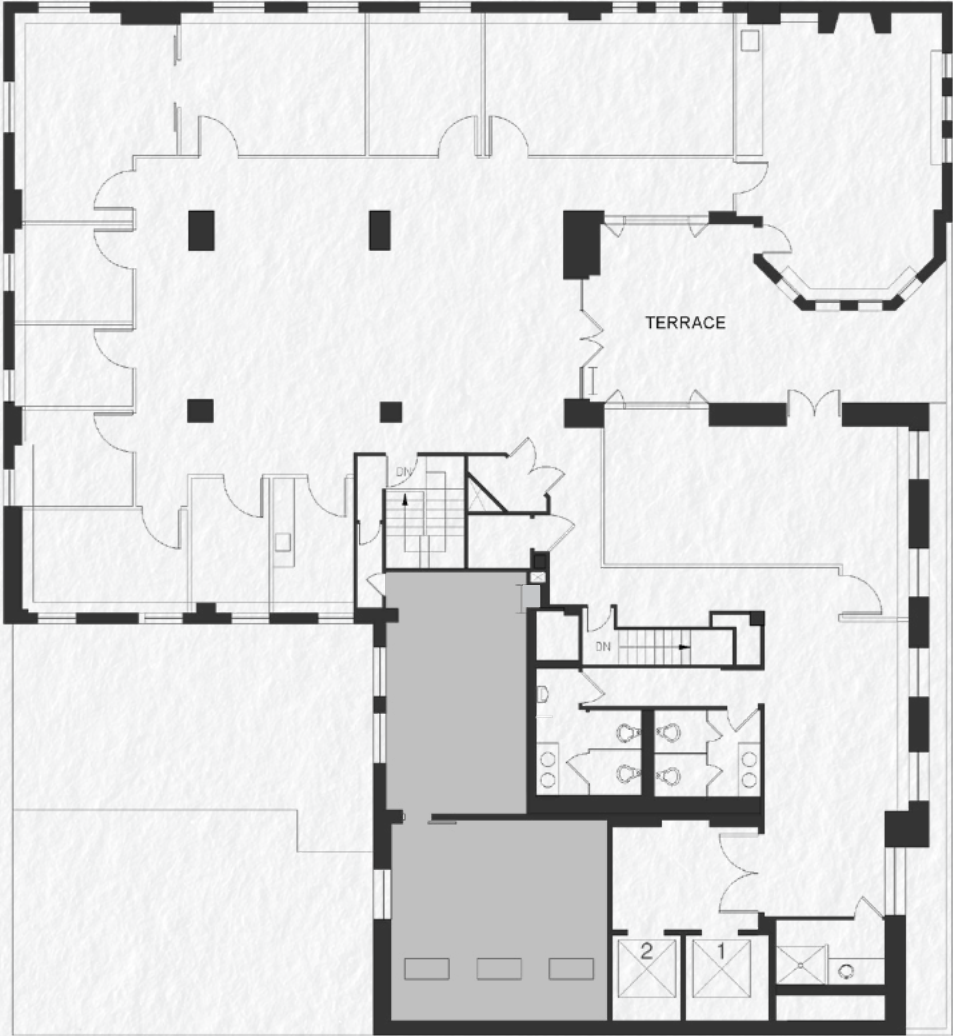
FLOOR PLANS

Existing Conditions

- 9 OFFICES
- 1 CONFERENCE ROOM
- 16 WORKSTATIONS
- LOUNGE
- TERRACE

Entire 21st Floor
8,138 RSF

East 45th Street



FURNITURE IS FOR ILLUSTRATIVE PURPOSES ONLY; ALL AREAS AND CONDITIONS ARE APPROXIMATE

KELLI BERKE
+1 212 841 7718

kelli.berke@cushwake.com

JOSHUA BRANHAM
+1 212 698 5625

joshua.branham@cushwake.com

MITCH ARKIN
+1 212 841 7522

mitchell.arkin@cushwake.com



Club Fifty Two is a private amenity center on the 6th floor, exclusively serving the building's tenants, their employees, and guests. The center features a boardroom, breakout rooms, a lounge area, phone booths, and a pantry—plus, complimentary coffee is available in the lounge.



KELLI BERKE
+1 212 841 7718

kelli.berke@cushwake.com

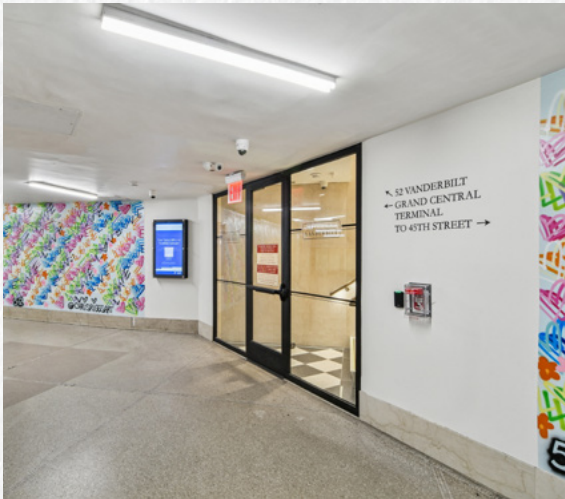
JOSHUA BRANHAM
+1 212 698 5625

joshua.branham@cushwake.com

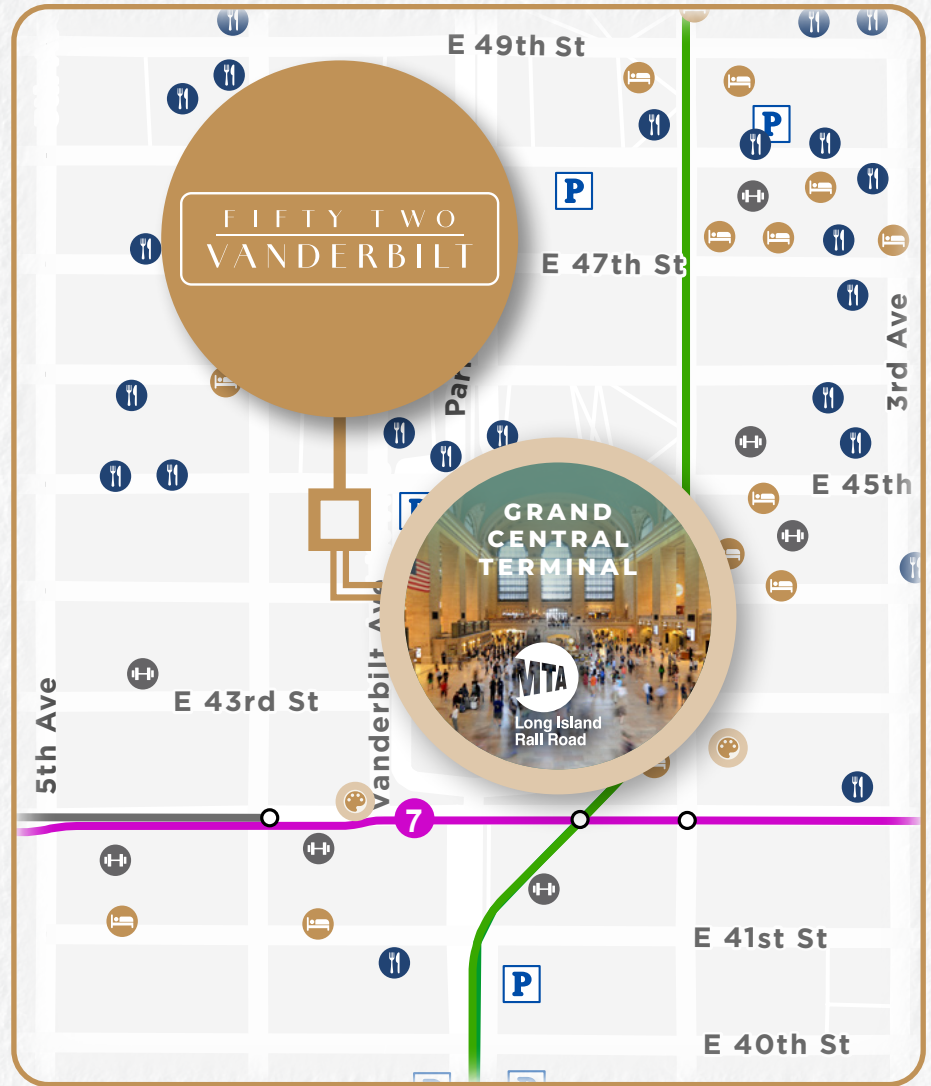
MITCH ARKIN
+1 212 841 7522

mitchell.arkin@cushwake.com

Walk down the stairs from the Building Lobby into Grand Central Terminal



NEWLY RENOVATED



DIRECT CONNECTION TO GRAND CENTRAL

Direct access to 4 5 6 7 S and Metro-North Trains

5-minute walk to 5th Avenue - Bryant Park 7 Train

Less than 10-minute walk to B D F M Trains

MTA Long Island Rail Road operates six train branches that serve Long Island and connect to Grand Central Madison

KELLI BERKE
+1 212 841 7718

kelli.berke@cushwake.com

JOSHUA BRANHAM
+1 212 698 5625

joshua.branham@cushwake.com

MITCH ARKIN
+1 212 841 7522

mitchell.arkin@cushwake.com