

18502 S. LAUREL PARK RD

AVAILABLE FOR SUBLEASE



PROPERTY HIGHLIGHTS

- Warehouse Space for Sublease
- Offered at \$1.50/SF/Mo. Gross (\$30,000/Mo.)
- 3 DH Loading Positions (14'x14') (14'x27')
- Heavy Power (3000 amps - verify)
- 24' Warehouse Clearance
- POL Warehouse (+/- 20,000 SF)
- Available for Occupancy on 10/01/2025
- Fully Fenced & Secured
- Unincorporated LA County - LCM2
- Sprinkler Calc. .60/2000
- Minutes to 405/710/91 Freeways
- Sufficient Parking (15 spaces)
- +/-144 SF of Office



\$30,000/Mo.
\$1.50/SF/Mo. Gross



20,000 SF of Building
108,900 SF of Land (POL)



3 DH Loading Positions



Heavy Power
(3000 amps - verify)



FRANKIE HILLEBRAND

DRE # 02206675

📞 310.424.0726

✉️ FH2@LACommercial.com



FRANK HILLEBRAND

DRE # 00979510

📞 310.940.4978

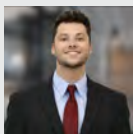
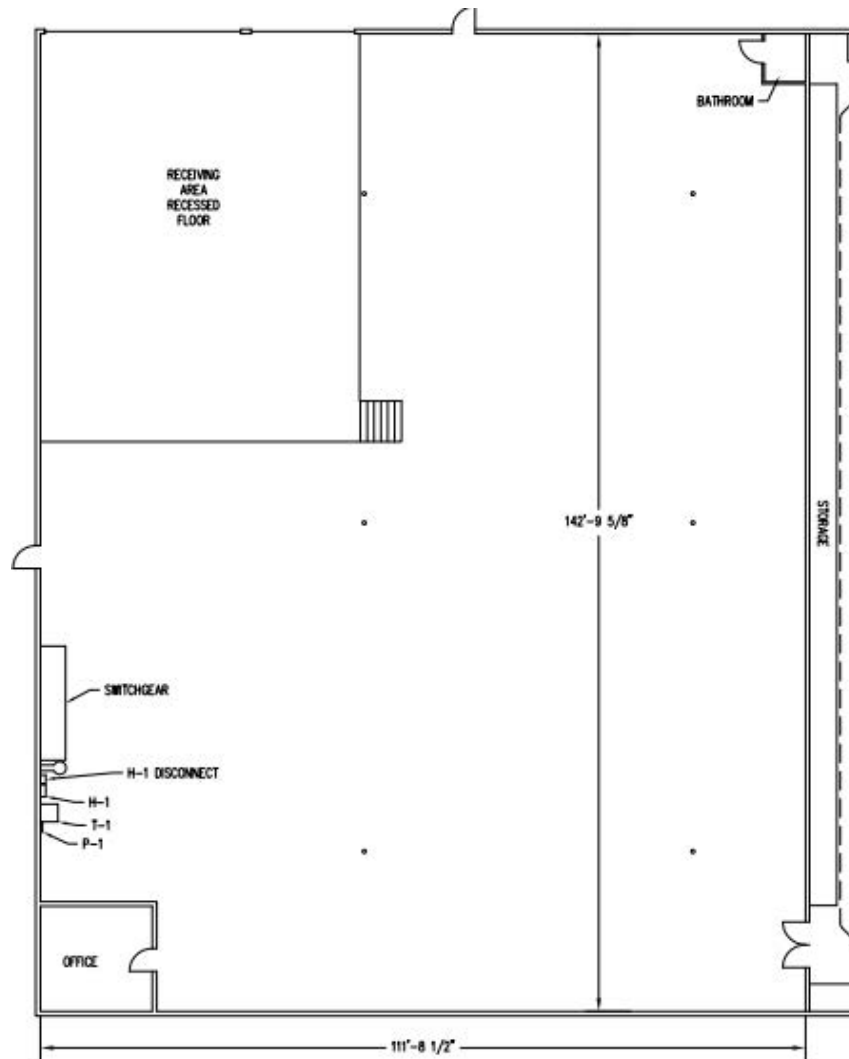
✉️ FH@LACommercial.com

LACOMMERCIAL, INC.

627 Aviation Way
Manhattan Beach, CA 90266

18502 S. LAUREL PARK RD

AVAILABLE FOR SUBLEASE



FRANKIE HILLEBRAND

DRE # 02206675

☎ 310.424.0726

✉ FH2@LACommercial.com



FRANK HILLEBRAND

DRE # 00979510

☎ 310.940.4978

✉ FH@LACommercial.com

LACOMMERCIAL, INC.

627 Aviation Way
Manhattan Beach, CA 90266