

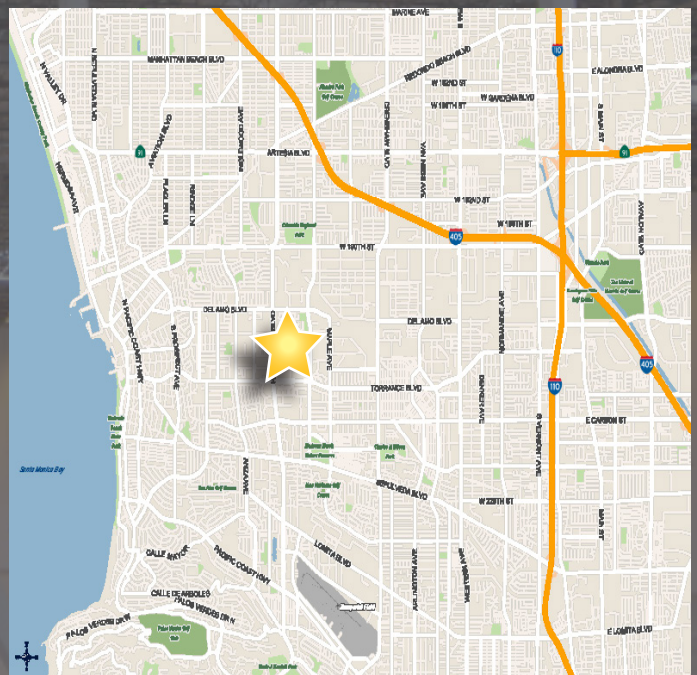


2610 Columbia Street Unit B Torrance, CA 90503

- Central Torrance Location
- Like New Building Exterior
- High efficiency T-5 Lighting in Warehouse
- Completely Remodeled Interior Offices
- Upgraded ESFR Sprinklers
- Secure Fencing Available
- 2 DH / 1 GL Truck Doors
- Power - 200 Amps
- Professionally Owned & Managed by First Industrial Realty Trust

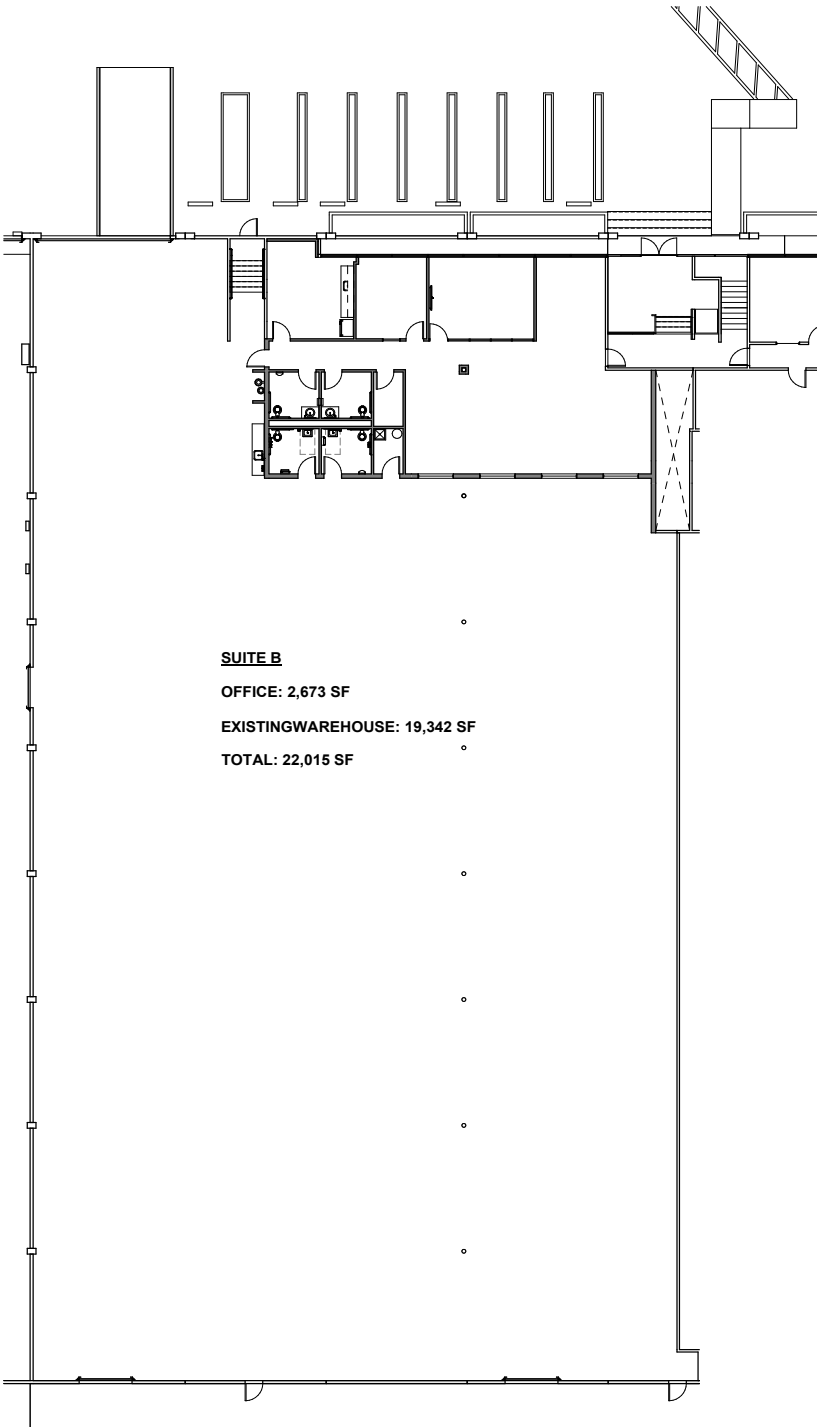
Highlights

Available Space:	22,015 SF
Building SF:	100,778 SF
Office Space:	± 2,673 SF
Clear Height:	20'
Loading Doors:	2 DH / 1 GL
Parking Ratio:	TBD
Power:	200 Amps 277-480 Volts



2610 Columbia Street Unit B Torrance, CA 90503

Site Plan



Broker Contact:

JEFF SMART

Senior Executive Vice President

License No. 00918873

+1 310 321 1812

jeffrey.smart@colliers.com

ELIZABETH CAPATI

Senior Associate

License No. 02109628

+1 310 321 1855

elizabeth.capati@colliers.com

2141 Rosecrans Avenue
Suite 1120
El Segundo, CA 90245
www.colliers.com



Owner Contact:

JERRY DEVON

Marketing & Leasing Director

898 N. Pacific Coast Highway | Suite 175

El Segundo, CA 90245

Direct: +1 (424) 220-9212

gdevon@firt.com



FIRST
INDUSTRIAL
REALTY • TRUST

www.firstindustrial.com

All information furnished regarding the property for sale, rental or financing is obtained from sources deemed reliable. No representation is made to the accuracy thereof and is submitted subject to errors, omissions, change of price rental or other conditions, prior sale, lease, or financing, or withdrawal without notice. First Industrial Realty Trust, Inc. represents the Seller in this transaction and as such owes all duties and obligations