

2700 Napa Valley Corporate Dr., Napa

Suite B ~ ±13,304 SF ~ \$1.25/SF/Mo. NNN



- Reception Area
- Conference Room
- ±17 Private Offices
- Cubicle Areas
- Kitchenette
- Mail Room & Server Room
- Oversized Restrooms w/Showers
- Single Story Office in City of Napa
- Separately Metered
- Walking Distance to Dining Options
- Generous Full-Height Windows
- Bus Stop Nearby



A lease of five years or more will be granted a concession of three months free Base Rent if lease is signed by the end of 2025.

NOTE: This space is divisible to ±4,210 SF. Divisions will affect the price, but be reasonably negotiated. Minimum divisibility within the complex is ±2,142 SF.

Virtual Tour: <https://www.youtube.com/watch?v=LPh30-BTnMQ>

*For up to 5 Years, then 1.5% for any extended term.



Michael Moffett
License #00946472
707.479.1976
mmoffett@cnapavalley.com

1775 Lincoln Ave.
Napa, CA 94558

Cathy D'Angelo Holmes

License #01355085
707.304.3338
cholmes@cnapavalley.com



2700 Napa Valley Corporate Dr., Napa

Suite B ~ ±13,304 SF ~ \$1.25/SF/Mo. NNN



Reception



Conference Room



Office Area



Signage



Michael Moffett
License #00946472
707.479.1976
mmoffett@cnapavalley.com

1775 Lincoln Ave.
Napa, CA 94558

Cathy D'Angelo Holmes

License #01355085
707.304.3338
cholmes@cnapavalley.com



2700 Napa Valley Corporate Dr., Napa

Suite B ~ ±13,304 SF ~ \$1.25/SF/Mo. NNN



Michael Moffett
License #00946472
707.479.1976
mmoffett@cnapavalley.com

1775 Lincoln Ave.
Napa, CA 94558

Cathy D'Angelo Holmes

License #01355085
707.304.3338
cholmes@cnapavalley.com

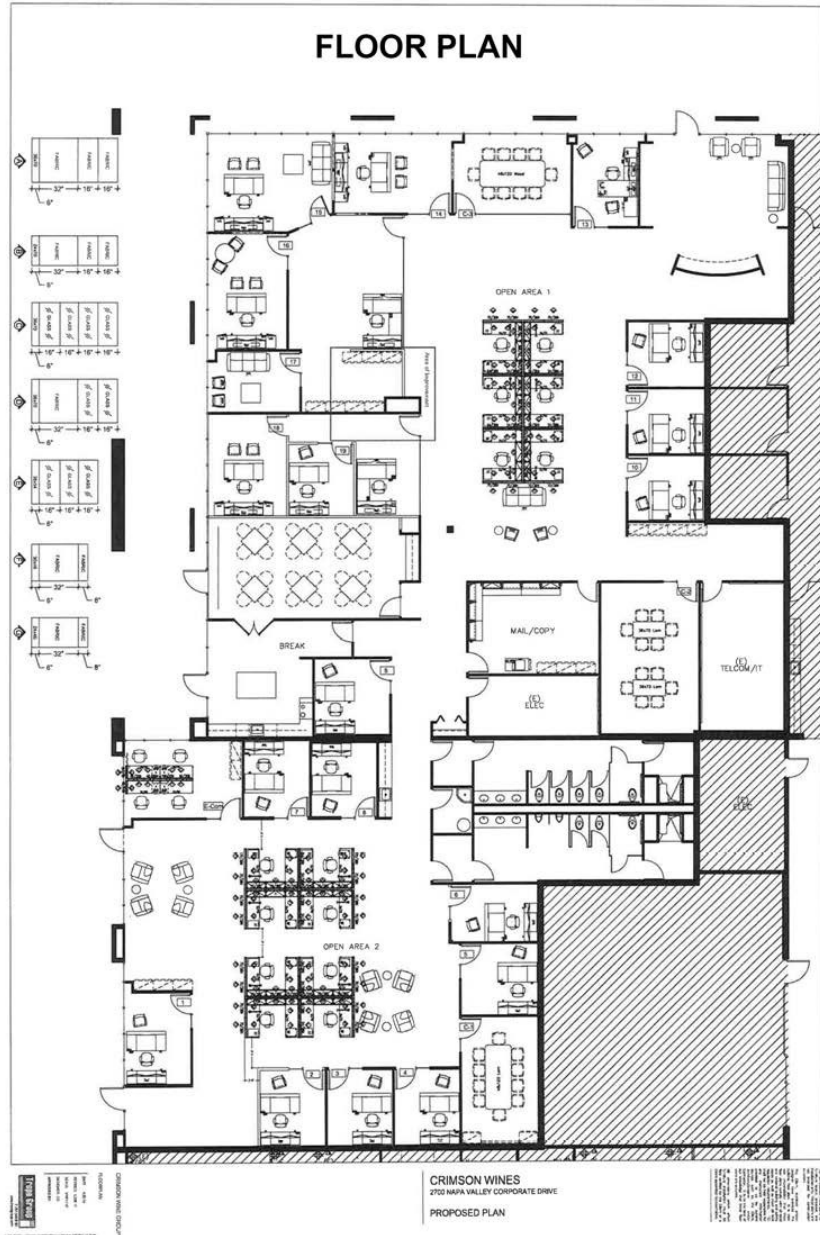




**COLDWELL BANKER
COMMERCIAL**

**BROKERS
OF THE VALLEY**

2700 Napa Valley Corporate Dr., Napa Suite B ~ ±13,304 SF ~ \$1.25/SF/Mo. NNN



Michael Moffett
License #00946472
707.479.1976
mmoffett@cnapavalley.com

1775 Lincoln Ave.
Napa, CA 94558

Cathy D'Angelo Holmes

License #01355085
707.304.3338
cholmes@cnapavalley.com

