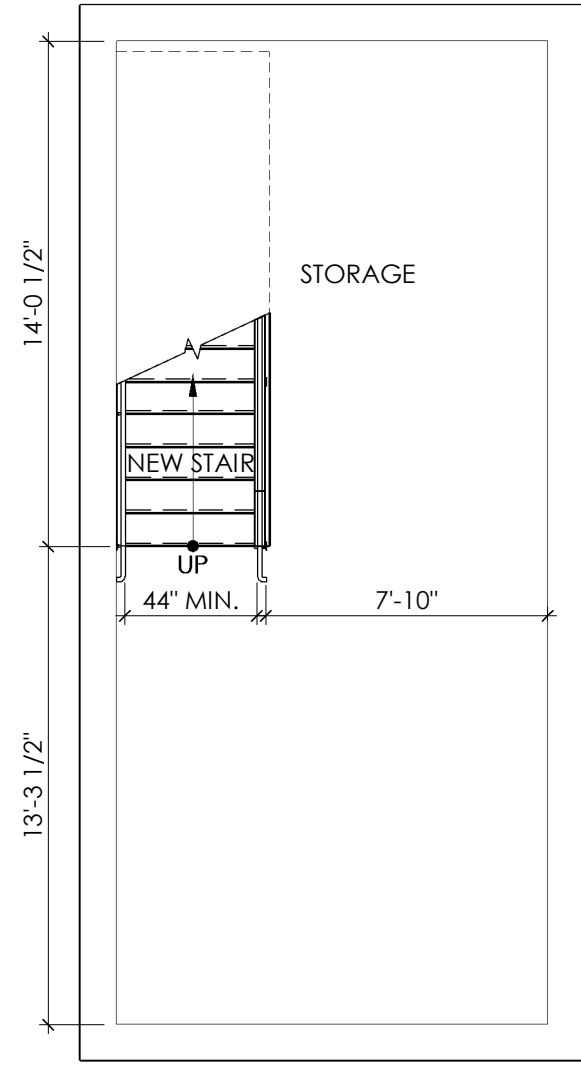


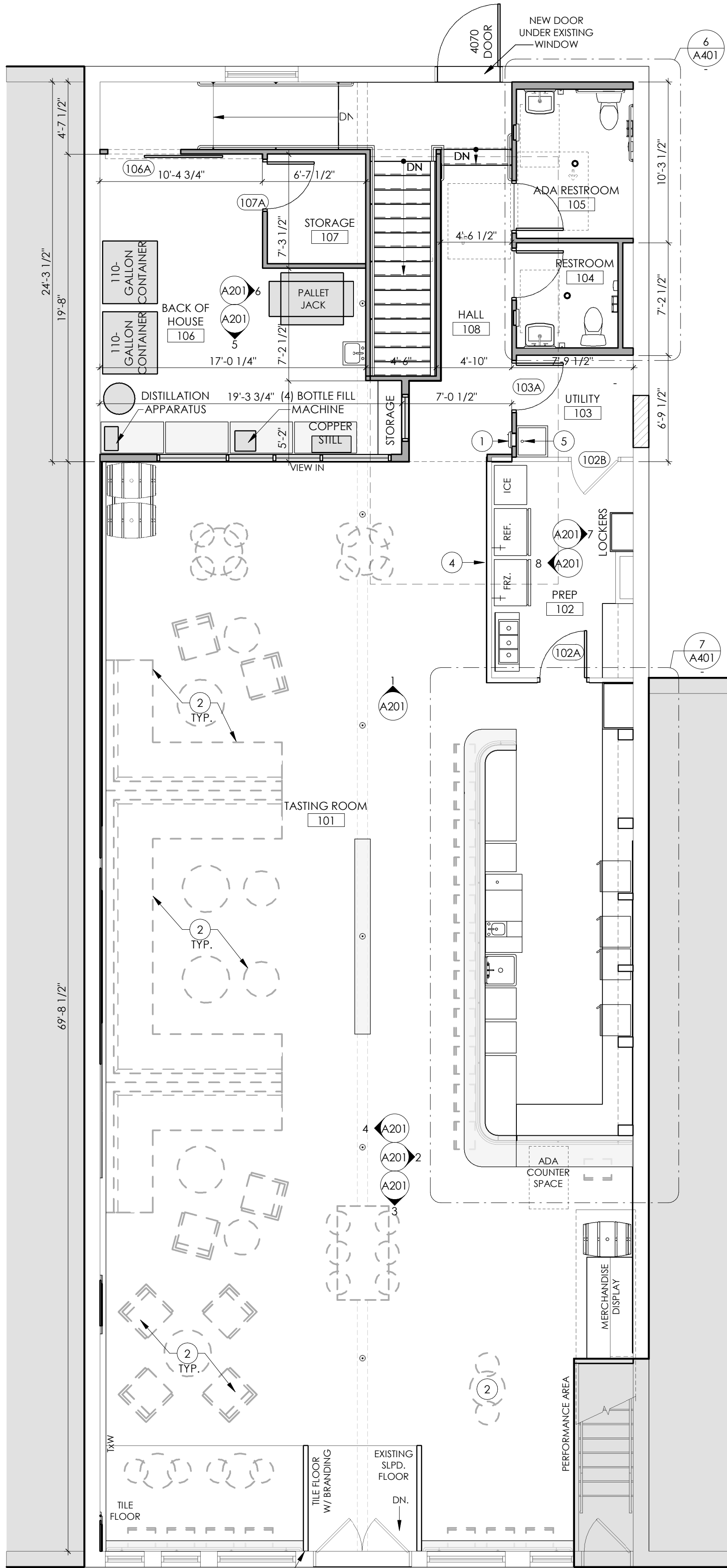
2 REFLECTED CEILING PLAN
3/16" = 1'-0"



3 CELLAR
3/16" = 1'-0"

RCP LEGEND

- 1'x4' LED CEILING LAY-IN
- 2'x2' LED CEILING LAY-IN
- 2'x4' LED CEILING LAY-IN
- 3" LED LINEAR
- RECESSED CAN
- SURFACE MOUNT
- WALL SCONCE
- WALL PACK
- PENDANT
- LED STRIP
- EXISTING 'TIN' CEILING TILES, EXISTING TO REMAIN, PROTECT DURING CONSTRUCTION
- NEW 24" X 24" DROP DOWN ACOUSTIC CEILING TILES & GRID SYSTEM



1 FLOOR PLAN
3/16" = 1'-0"

GENERAL PLAN NOTES

- PROVIDE FIRE EXTINGUISHERS, SPECIFICATION PER JURISDICTION, MEETING THE TRAVEL DISTANCE OF 75 FEET TO AN EXTINGUISHER FROM ALL PORTIONS. INSTALLATION LOCATIONS TO BE VERIFIED BY LICENSED INSPECTOR. SEE LIFE SAFETY PLAN FOR SUGGESTED LOCATIONS.
- SPRAY FOAM INSULATION APPLICATION IS TO BE INSTALLED PER CODE AND AN ICC-ES REPORT MUST BE PROVIDED TO FIRE DEPARTMENT FOR SEPARATE REVIEW AND APPROVAL.
- REFER TO WALL SECTIONS & DETAILS SHEETS **XYZ** FOR EXTERIOR WALL TYPES
- KNOX BOX LOCATION(S) TO BE APPROVED BY FIRE DEPARTMENT AND SHALL BE INSTALLED NO LESS THAN 48" AND NO MORE THAN 72" ABOVE FINISHED GRADE.
- ALL SIGNAGE REQUIRES A SEPARATE APPLICATION AND APPROVAL FROM THE BUILDING INSPECTIONS DEPARTMENT. NO SIGNAGE IS APPROVED WITH THE SITE DEVELOPMENT PLAN OR BUILDING'S CONSTRUCTION DOCUMENTS.
- ALL WALLS TO BE **XYZ** U.N.O. SEE PARTITION WALL LEGEND SHEET, **XYZ**.
- DIMENSIONS ARE TO THE FACE OF STUD OR FACE OF CMU U.N.O..
- ALIGN FACE OF WALLS WITH FACE OF COLUMN WRAPS, WHERE POSSIBLE, WHERE OCCURS, TYP., U.N.O..
- WHERE WALL TYPES WITH GYP BD FINISH AND DIFFERENT THICKNESSES ADJOIN IN SAME PLANE, ALIGN FACE OF GYP BD.
- PROVIDE C/J'S AT 30'-0" OC MAX AT DOORS AND WINDOWS (AS INDICATED ON INTERIOR ELEVATIONS OF GYP BD WALL ASSEMBLIES.)
- ALL INTERIOR DOORS TO BE LOCATED 6" FROM ADJACENT WALL U.N.O.

LEGEND

- NEW DOOR
- EXISTING DOOR
- EXISTING WALLS TO REMAIN
- NEW WALLS
- DEMO WALLS
- EXISTING AREA TO REMAIN - NO WORK

PLAN KEYNOTES LEGEND

- SEMI RECESSED ALUMINUM FIRE EXTINGUISHER CABINET. PROVIDE BLOCKING AS REQUIRED.
- FURNITURE BY OTHERS.
- EQUIPMENT BY OTHERS. SEE MEP.
- TV BY OTHERS. PROVIDE BLOCKING AS REQUIRED. SEE MEP.
- MOP SINK LOCATION. SEE MEP. PROVIDE FRP PANEL @ PLUMBING WALLS, 48" HIGH.
- RECESSED KNOX BOX LOCATION. SPEC. PER JURISDICTION.
- MECHANICAL EQUIPMENT, SEE MEP.
- LINE OF CEILING ABOVE. SEE RCP.
- PLUMBING LEAVE-OUTS. SEE MEP AND STRUCTURAL.
- SEMI RECESSED ALUMINUM FIRE EXTINGUISHER CABINET. PROVIDE BLOCKING AS REQUIRED.
- 5'X5" PRE-FINISHED DOWNSPOUT LOCATION, TYP. FINISH TO MATCH ADJACENT WALL. COORDINATE WITH CIVIL AS NEEDED. PROVIDE CONCRETE SPLASH BLOCK ON GROUND AS REQ'D.
- LINE OF ROOF ABOVE.
- ELECTRICAL PANEL LOCATION, SEE MEP.
- SITE WORK, SEE CIVIL.