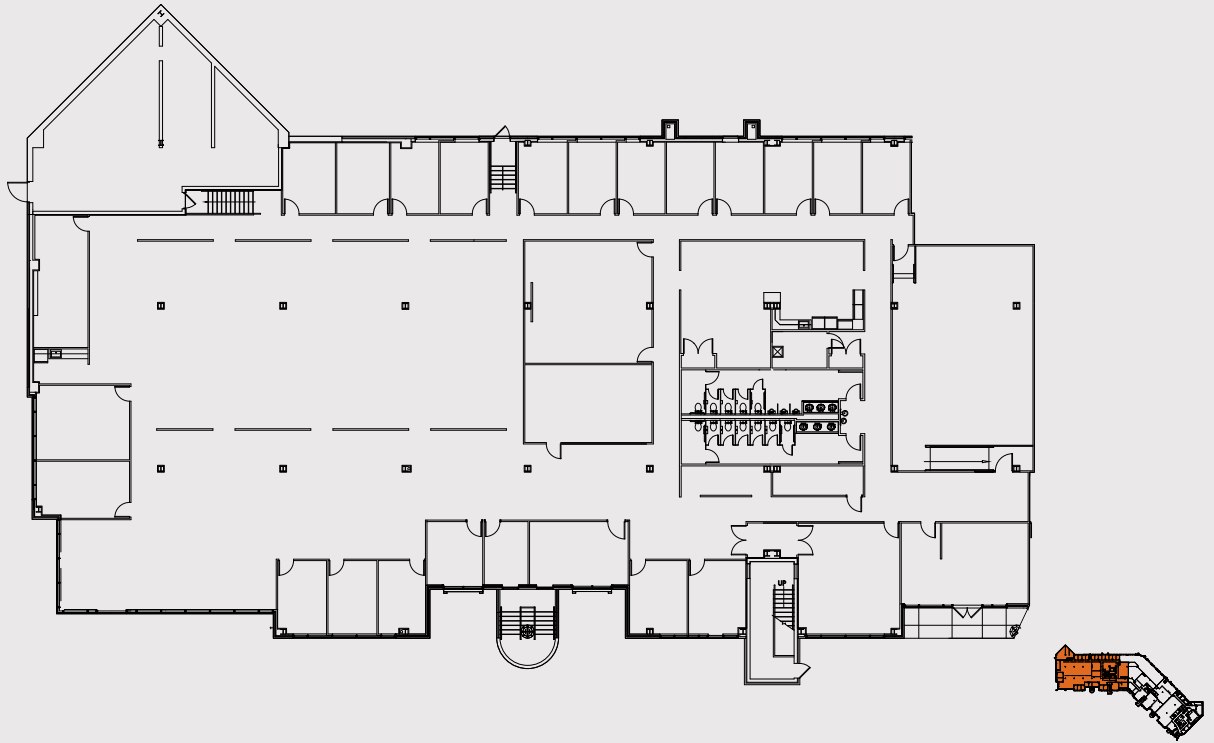


SENECA MEADOWS

CORPORATE CENTER



20320-20324 SENECA MEADOWS PARKWAY | BUILDING 2

Available

Up to 18,933 sf

Parking Ratio

3.4 spaces/ 1,000 sf

Column Spacing

25 ft x 34 ft

Clear Height

16 ft

Features

- Two dock-high loading doors
- Fully conditioned
- End cap space with building signage facing I270 available



Mike Maites | Director of Leasing
mmaites@minkoffdev.com

Ben Wiebusch | Leasing Associate
bwiebusch@minkoffdev.com

240.912.0200 | minkoffdev.com

REAL ESTATE
PERSONAL PERSPECTIVE