

DANVILLE FINANCIAL CENTER · TWO-STORY OFFICE BUILDING

Office Suites for Lease



500 La Gonda Way, Danville, CA 94526

ADAM GOLDACKER

Senior Portfolio Manager

312-446-7787

Adam.Goldacker@kwprealestate.com

DRE #01974618

DANVILLE FINANCIAL CENTER • TWO-STORY OFFICE BUILDING

Office Suites for Lease



500 La Gonda Way, Danville, CA 94526

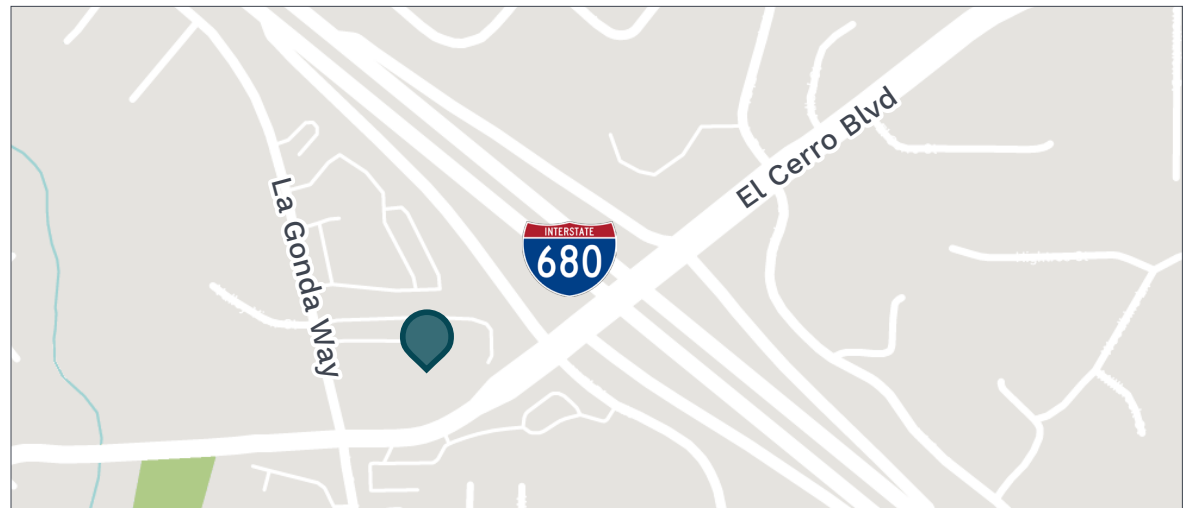
AVAILABLE

Suite 290: ±2,110 SF

Rent: \$3.25 PSF/Mo., FSG

PROPERTY HIGHLIGHTS

- Convenient location off of I-680 at El Cerro Blvd
- Close proximity to downtown Danville
- Various building & site improvements underway including completely new HVAC
- Abundant parking, 4/1,000 SF parking ratio
- Mature landscaping
- On-site FedEx drop-box
- Great suite layouts available



DANVILLE FINANCIAL CENTER • TWO-STORY OFFICE BUILDING
Office Suites for Lease



500 La Gonda Way, Danville, CA 94526

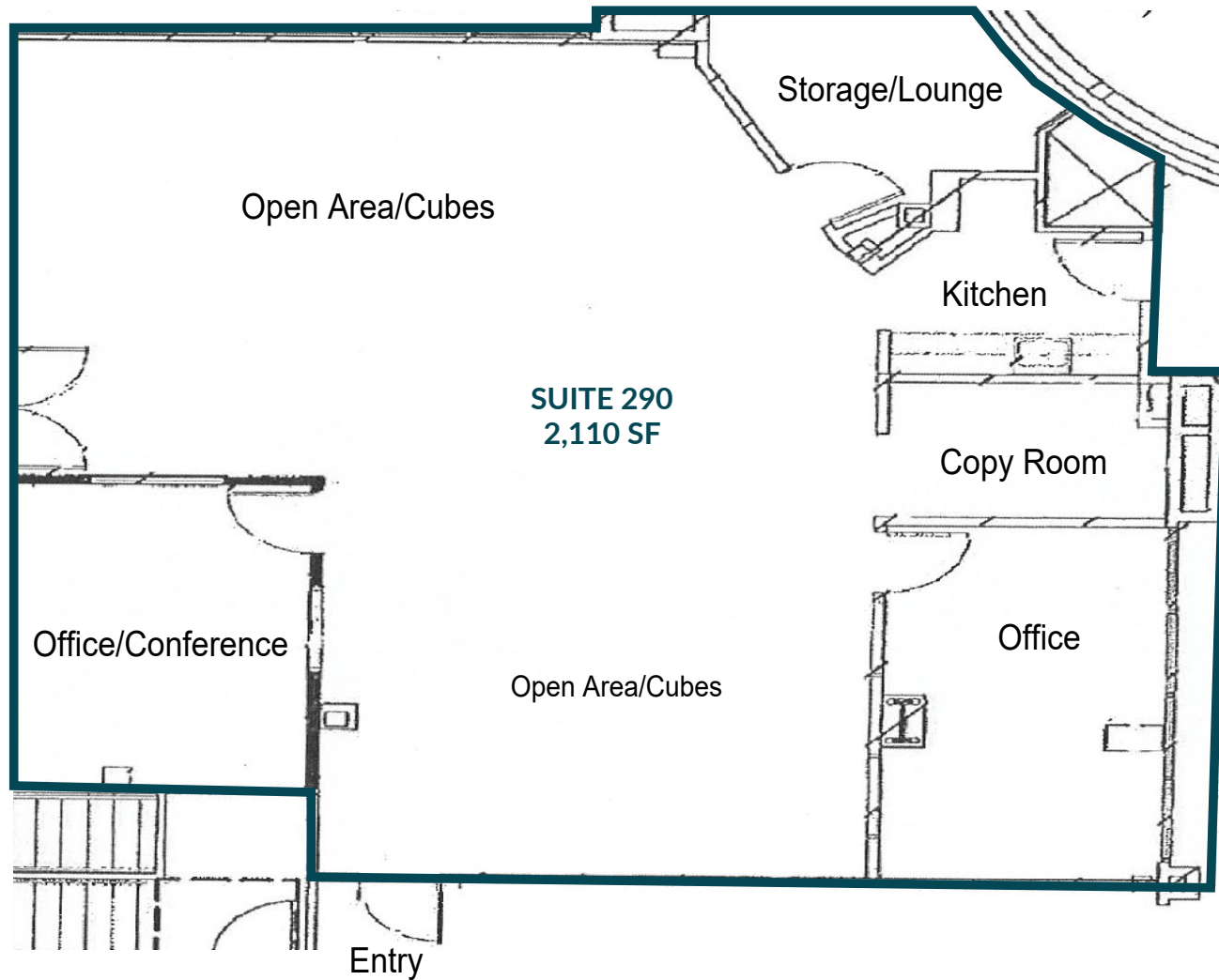


Exterior Entrance

Office Suites for Lease



500 La Gonda Way, Danville, CA 94526

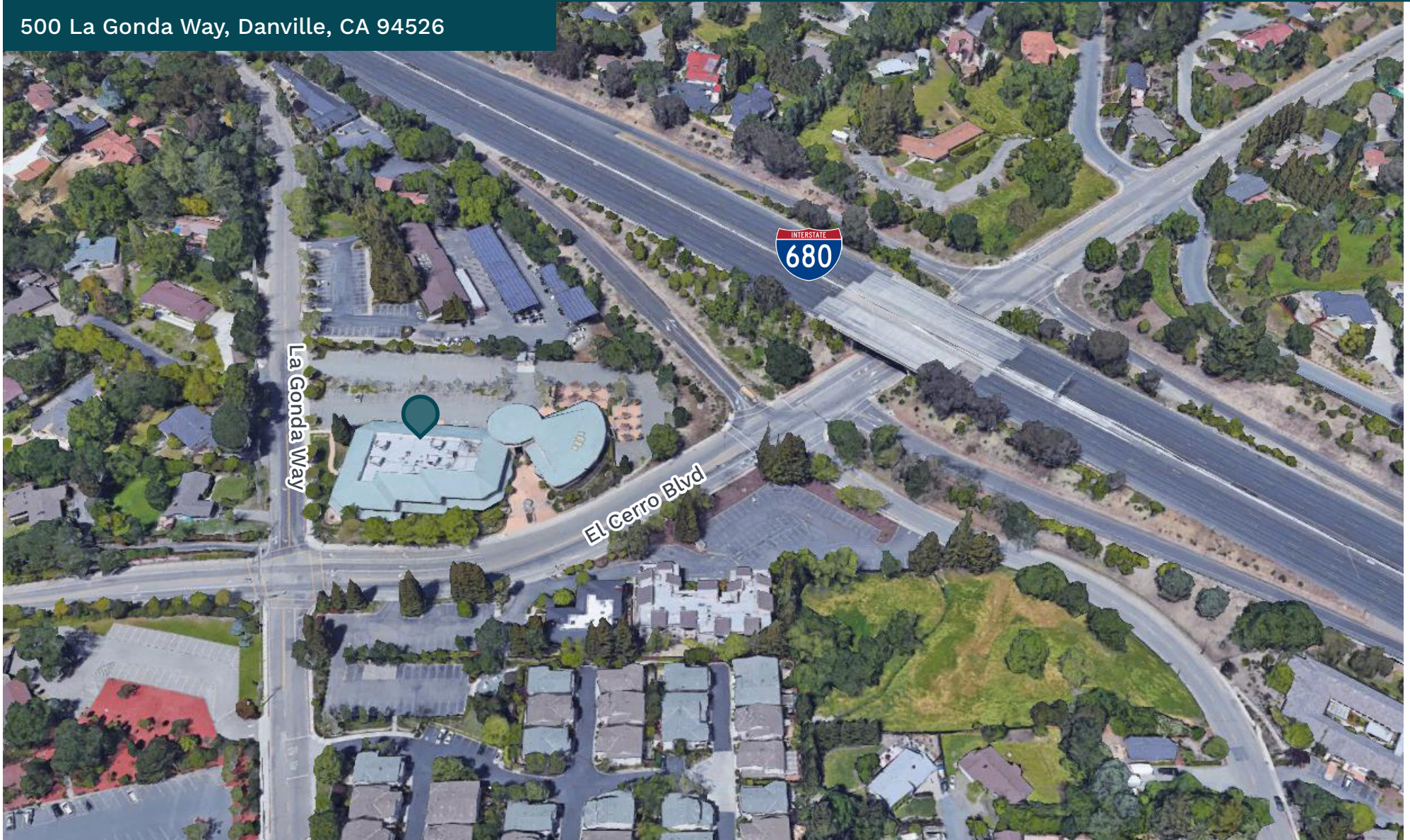


DANVILLE FINANCIAL CENTER • TWO-STORY OFFICE BUILDING

Office Suites for Lease



500 La Gonda Way, Danville, CA 94526





REAL ESTATE

ADAM GOLDACKER

312-446-7787

Adam.Goldacker@kwprealestate.com

DRE #01974618

KWP Real Estate | 1850 Gateway Blvd., Suite 130, Concord, CA 94520 | 925-945-1495 | kwprealestate.com

Kennedy-Wilson Properties, Ltd. (Responsible Broker Identity, DRE #00659610) makes no warranty or representation as to the accuracy of the information contained herein. Terms of sale or lease and availability of the property are subject to change or withdrawal without notice.