

QU  
BE



FOR LEASE - OFFICE  
**251 BANK STREET**

OTTAWA, ONTARIO

# 251 BANK STREET

## PROPERTY DETAILS

Availability	Type	Size (SF)	Rent (PSF)	CAM	Comments
Lower Level	Storage	3,450	\$15.00	Gross	Clean, dry space, 7' clear, available immediately
Ground Floor	Retail	1,650	\$20.00	\$18.50	High profile retail space adjacent to Starbucks
Second Floor	Office	7,005	\$20.00	\$14.00	Fully improved turnkey office space, 30 days notice
Third Floor	Office	7,005	\$20.00	\$14.00	Fully improved turnkey office space, 30 days notice
Fourth Floor	Office	1,245	\$16.00	\$14.00	Reception area, 3 offices and storage room
Fifth Floor	Office	7,005	\$20.00	\$14.00	Fully improved turnkey office space, 30 days notice
Seventh Floor	Office	7,005	\$16.00	\$14.00	Fully improved turnkey office space, 30 days notice

**QUINTIN COLAIACOVO**  
BROKER OF RECORD  
(613) 371 1140  
[quintin@qubeproperties.com](mailto:quintin@qubeproperties.com)

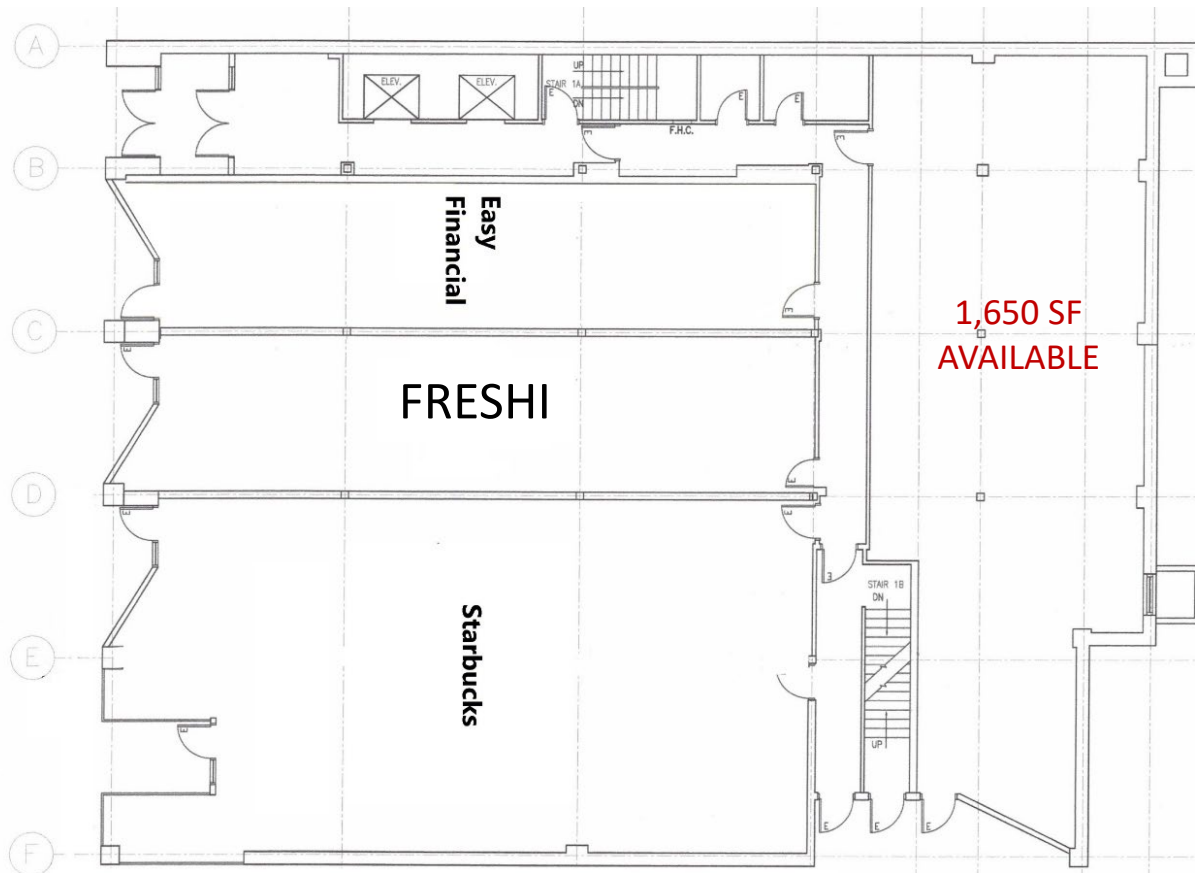
**QUBE PROPERTIES LTD.**  
REAL ESTATE BROKERAGE  
255 MICHAEL COWPLAND DRIVE  
OTTAWA ON K2M 0M5

**QUBE**  
PROPERTIES





# GROUND FLOOR

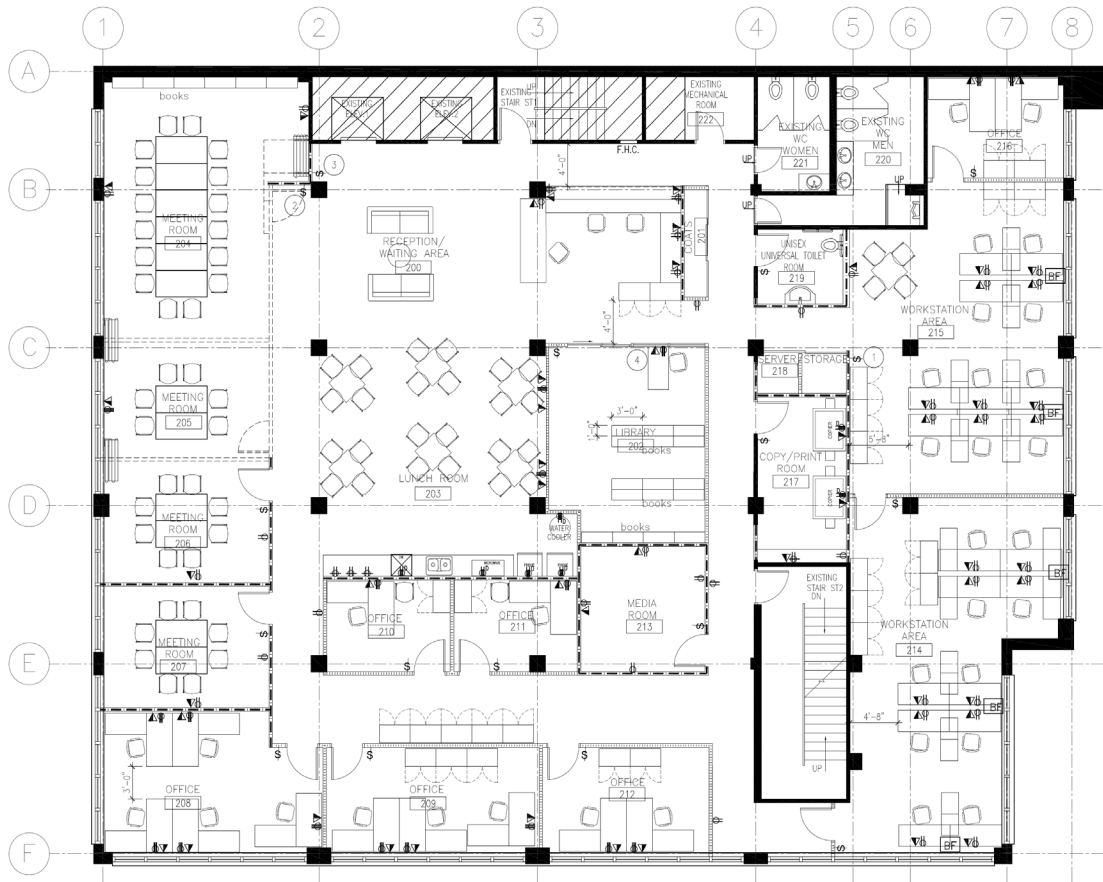


**QUINTIN COLAIACOVO**  
BROKER OF RECORD  
(613) 371 1140  
[quintin@qubeproperties.com](mailto:quintin@qubeproperties.com)

**QUBE PROPERTIES LTD.**  
REAL ESTATE BROKERAGE  
255 MICHAEL COWPLAND DRIVE  
OTTAWA ON K2M 0M5

**QUBE**  
PROPERTIES

# SECOND FLOOR



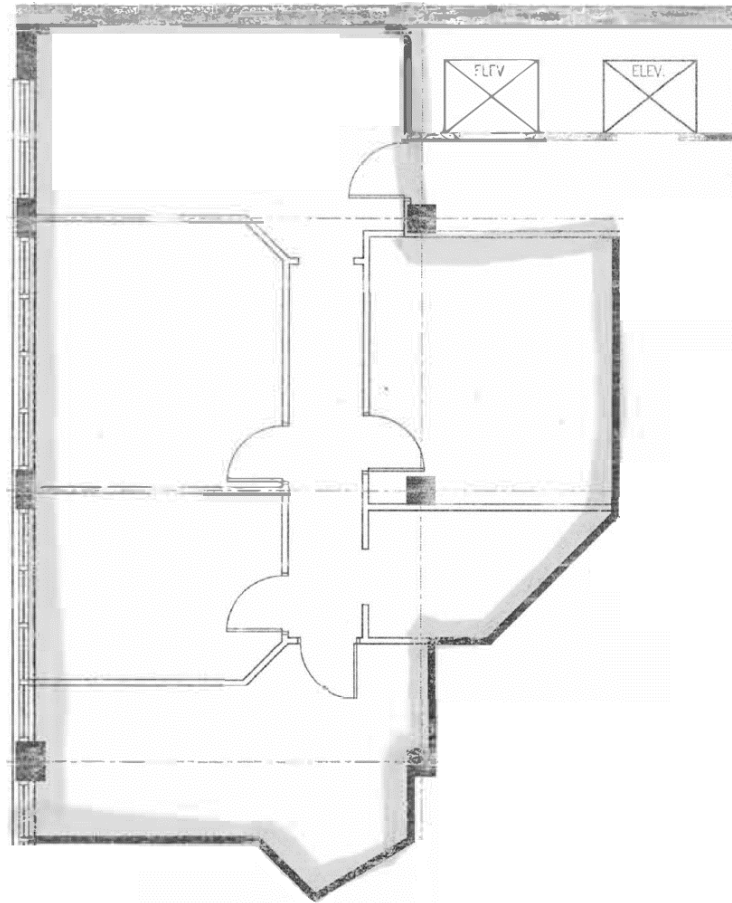
**QUINTIN COLAIACOVO**  
 BROKER OF RECORD  
 (613) 371 1140  
[quintin@qubeproperties.com](mailto:quintin@qubeproperties.com)

**QUBE PROPERTIES LTD.**  
 REAL ESTATE BROKERAGE  
 255 MICHAEL COWPLAND DRIVE  
 OTTAWA ON K2M 0M5

**QUBE**  
 PROPERTIES



# FOURTH FLOOR

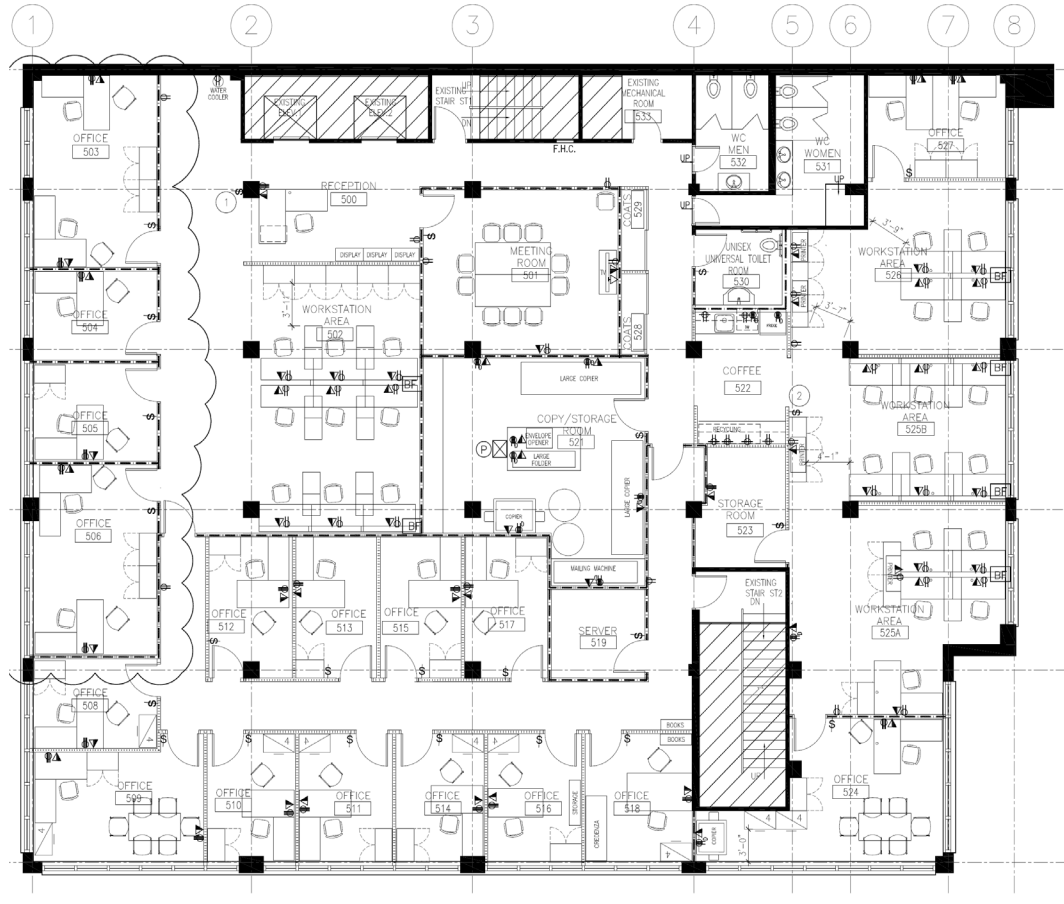


**QUINTIN COLAIACOVO**  
BROKER OF RECORD  
(613) 371 1140  
[quintin@qubeproperties.com](mailto:quintin@qubeproperties.com)

**QUBE PROPERTIES LTD.**  
REAL ESTATE BROKERAGE  
255 MICHAEL COWPLAND DRIVE  
OTTAWA ON K2M 0M5

**QUBE**  
PROPERTIES

# FIFTH FLOOR

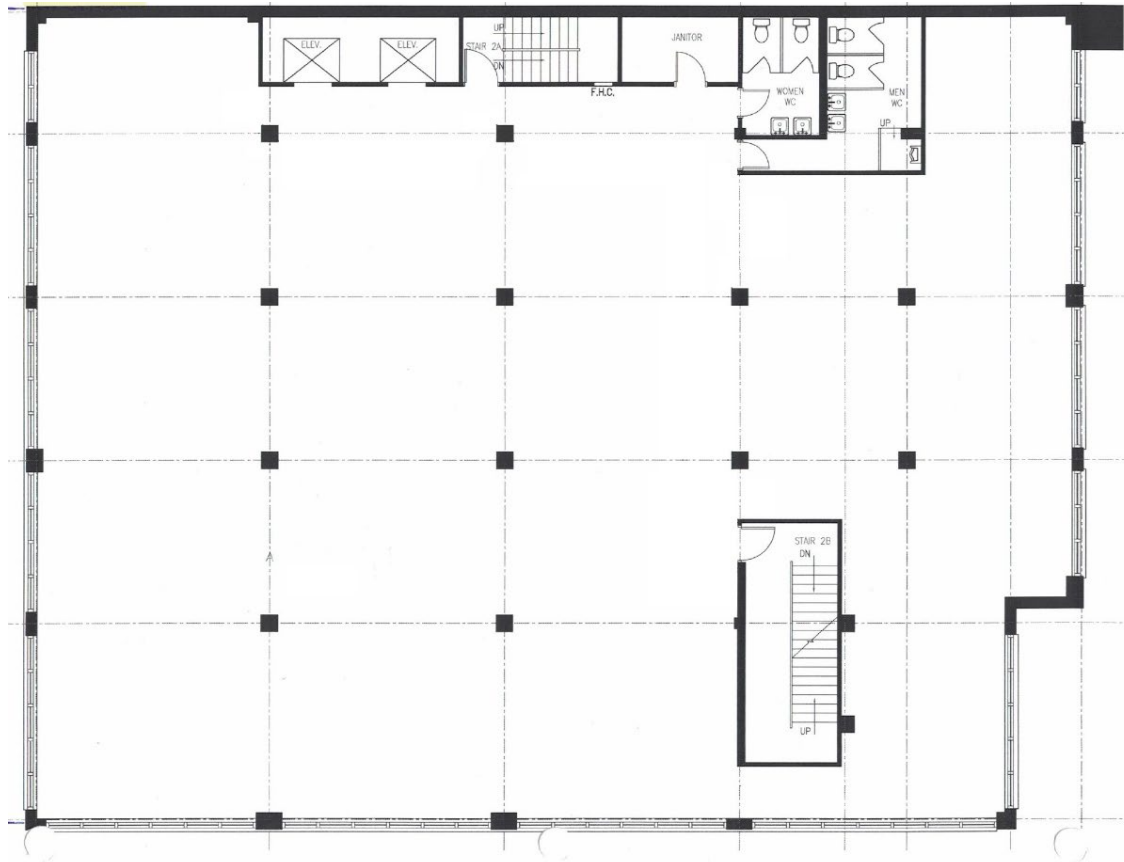


**QUINTIN COLAIACOVO**  
 BROKER OF RECORD  
 (613) 371 1140  
[quintin@qubeproperties.com](mailto:quintin@qubeproperties.com)

**QUBE PROPERTIES LTD.**  
 REAL ESTATE BROKERAGE  
 255 MICHAEL COWPLAND DRIVE  
 OTTAWA ON K2M 0M5

**QUBE**  
 PROPERTIES

# SEVENTH FLOOR



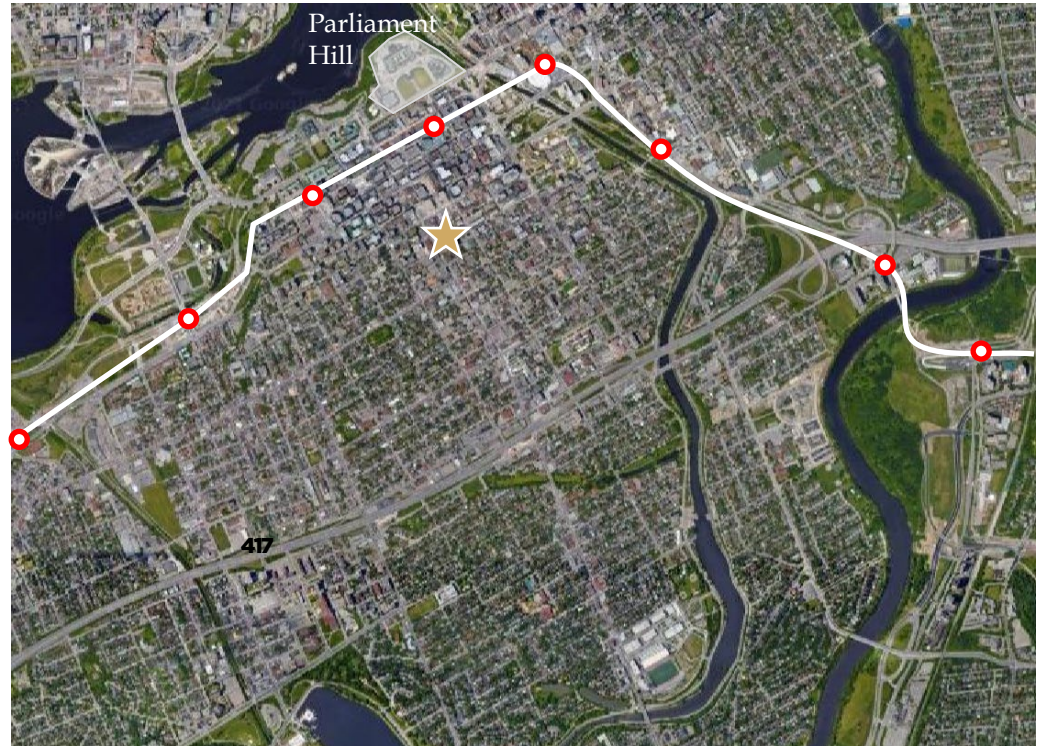
**QUINTIN COLAIACOVO**  
BROKER OF RECORD  
(613) 371 1140  
[quintin@qubeproperties.com](mailto:quintin@qubeproperties.com)

**QUBE PROPERTIES LTD.**  
REAL ESTATE BROKERAGE  
255 MICHAEL COWPLAND DRIVE  
OTTAWA ON K2M 0M5

**QUBE**  
PROPERTIES

# LOCATION DETAILS

- High profile location at the corner of Bank and Cooper Street
- Surrounded by amenities including retail shops, cafes, restaurants and pubs
- Public transit stop at the doorstep & walking distance to Parliament LRT Station
- Entire 7<sup>th</sup> floor available offering 270 degree panoramic view of the city



**QUINTIN COLAIACOVO**  
BROKER OF RECORD  
(613) 371 1140  
[quintin@qubeproperties.com](mailto:quintin@qubeproperties.com)

**QUBE PROPERTIES LTD.**  
REAL ESTATE BROKERAGE  
255 MICHAEL COWPLAND DRIVE  
OTTAWA ON K2M 0M5

**QUBE**  
PROPERTIES

QUBE



**QUINTIN COLAIACOVO**  
BROKER OF RECORD  
(613) 371 1140  
[quintin@qubeproperties.com](mailto:quintin@qubeproperties.com)

**QUBE PROPERTIES LTD.**  
REAL ESTATE BROKERAGE  
255 MICHAEL COWPLAND DRIVE  
OTTAWA ON K2M 0M5

**QUBE**  
PROPERTIES

This disclaimer shall apply to Qube Properties Ltd, Real Estate Brokerage, and to all other divisions of the Corporation; to include all employees and independent contractors ("Qube"). The information set out herein, including, without limitation, any projections, images, opinions, assumptions and estimates obtained from third parties (the "Information") has not been verified by Qube, and Qube does not represent, warrant or guarantee the accuracy, correctness and completeness of the Information. Qube does not accept or assume any responsibility or liability, direct or consequential, for the Information or the recipient's reliance upon the Information. The recipient of the Information should take such steps as the recipient may deem necessary to verify the Information prior to placing any reliance upon the Information.