



**MULTIPLE
FLOORS/SUITES
AVAILABLE**

7,728 - 17,887 SF

THE FINCH GROUP
A MULTIFACETED REAL ESTATE COMPANY

**AVISON
YOUNG**

SPACE HIGHLIGHTS

HIGH CEILINGS

OVERSIZED WINDOWS

ABUNDANT NATURAL LIGHT

BASEMENT STORAGE AVAILABLE

ON-SIZE RESTAURANT

BIKE STORAGE

STRONG OWNERSHIP

SUPERVISOR ON-SITE



ELEVATOR BAY



LOBBY



LOBBY



2ND FLOOR



2ND FLOOR

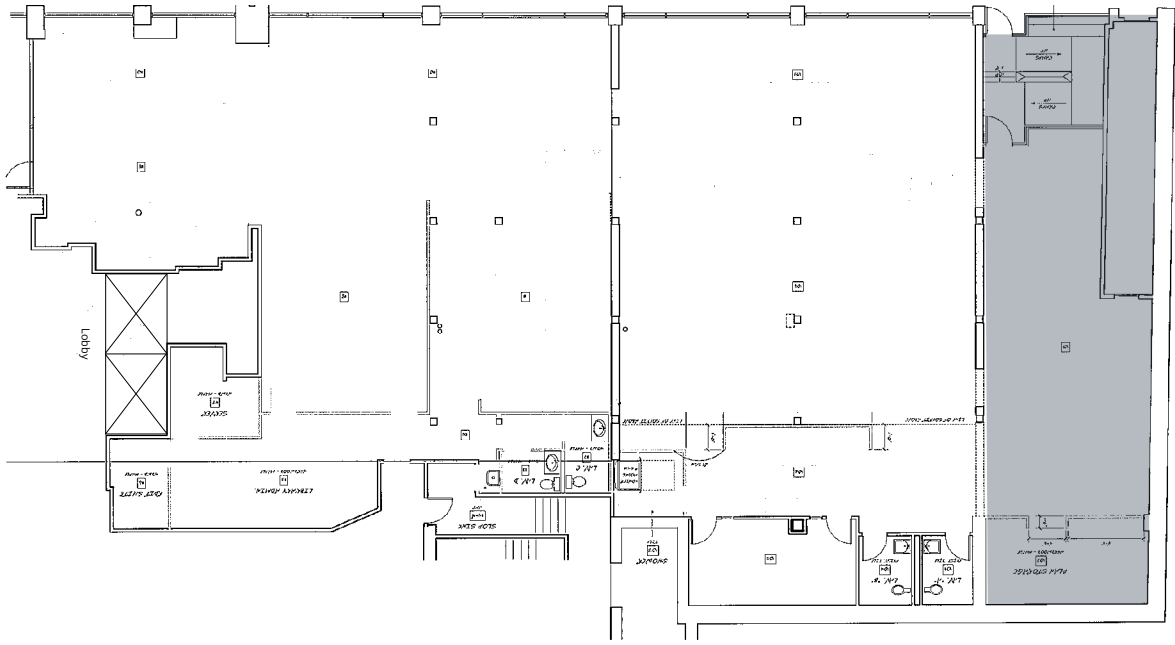


2ND FLOOR



2ND FLOOR

FIRST FLOOR | 7,794 SF



PORTLAND STREET

SECOND FLOOR | 10,159 SF

PORTLAND STREET

CAUSEWAY STREET



LOCATION

1/2 MILE
RADIUS

17,079 

daily North Station
T passengers

33 

Bars & Restaurants



47,476

Daily Population

475,447

annual North Station
Amtrak passengers

2,216 

Residential Units

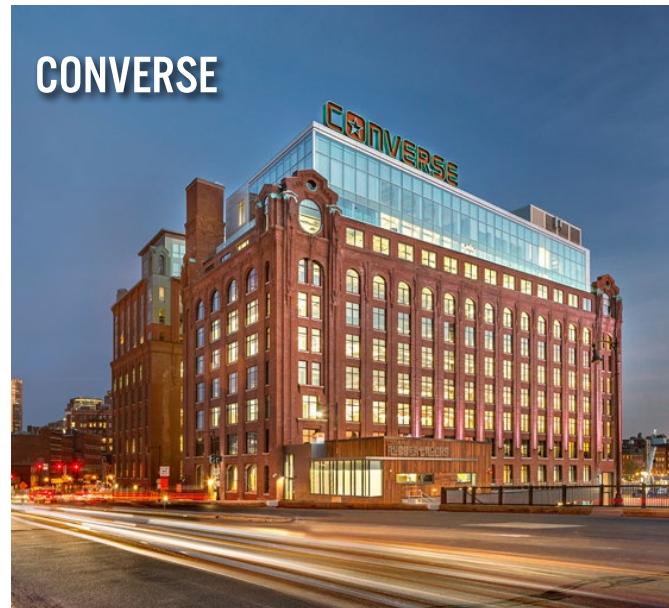


- Ideally located steps to North Station commuter rail, Government Center, the North End and the Financial District
- Walking distance to the MBTA Green & Orange T lines and commuter rail at North Station
- Numerous area services and amenities
- Steps from beautifully landscaped public space on the Rose Kennedy Greenway
- Unique corner building with spectacular views on Causeway Street

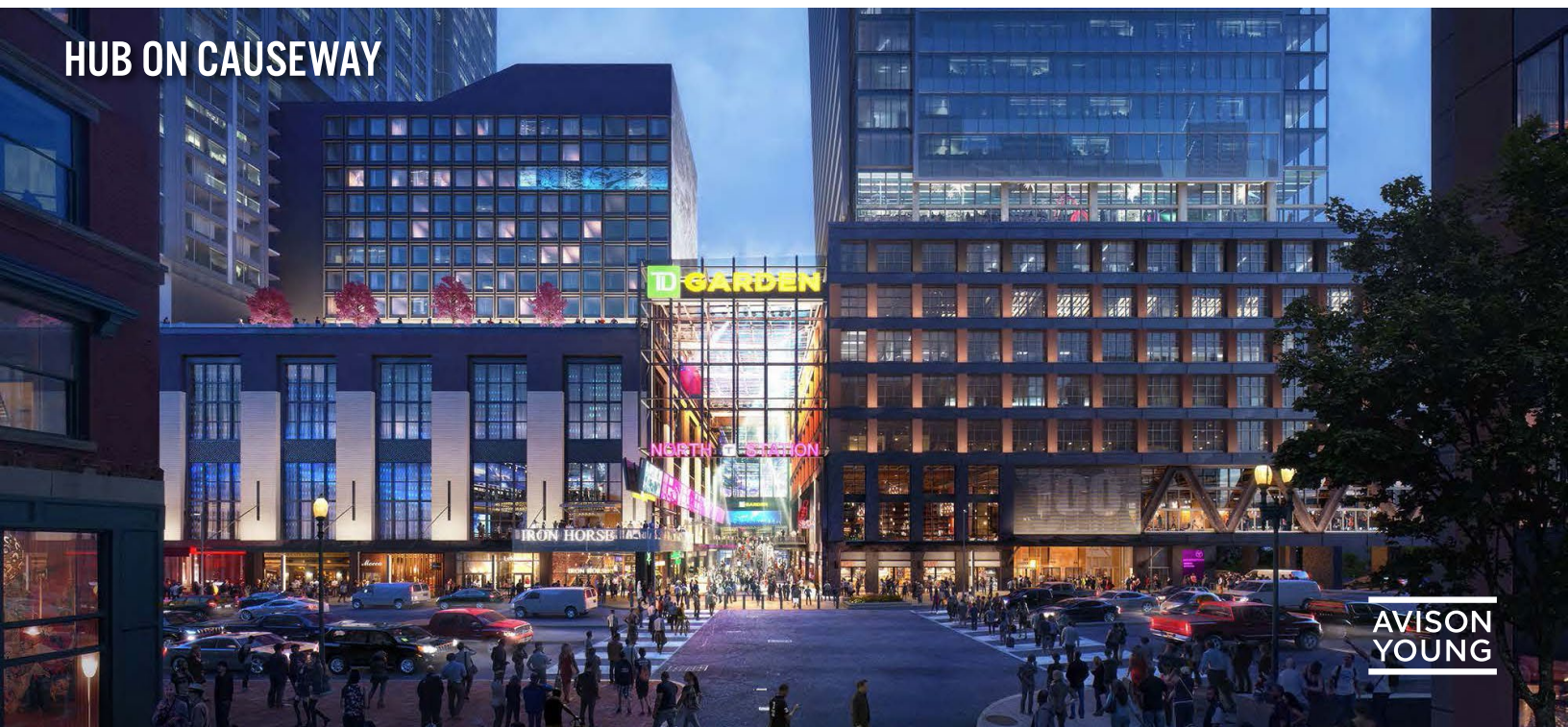
TD GARDEN



CONVERSE



HUB ON CAUSEWAY





FOR MORE INFORMATION, PLEASE CONTACT:

Justin Dziama, Principal
617.366.1004
justin.dziama@avisonyoung.com

John McHugh, Senior Vice President
617.702.8869
john.mchugh@avisonyoung.com

200 State Street | Floor 15 | Boston, MA | 02109

© 2025 Avison Young New England. All rights reserved. E. & O.E.: The information contained herein was obtained from sources which we deem reliable and, while thought to be correct, is not guaranteed by Avison Young.

