

VICTORIA FLAME DESIGN

Project Name
Addition / Renovation

Description
REAR & SIDE ELEVATIONS

Scale: 1/4" = 1'-0"

Date: 10/15/2025

Drawn by: VAF

Plot Date: 10/15/2025 3:53:33

Revisions/Project Status

Issue Date & Issue Description



Issue

Date

Description

Issue

Date

Description

Issue

Date

Description

Issue

Date

Description

Issue

Date

Description

Issue

Date

Description

Issue

Date

Description

Issue

Date

Description

Issue

Date

Description

Issue

Date

Description

Issue

Date

Description

Issue

Date

Description

Issue

Date

Description

Issue

Date

Description

Issue

Date

Description

Issue

Date

Description

Issue

Date

Description

Issue

Date

Description

Issue

Date

Description

Issue

Date

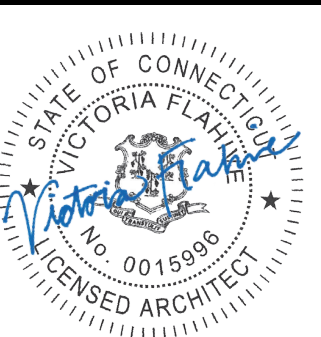
Description

Issue

Date

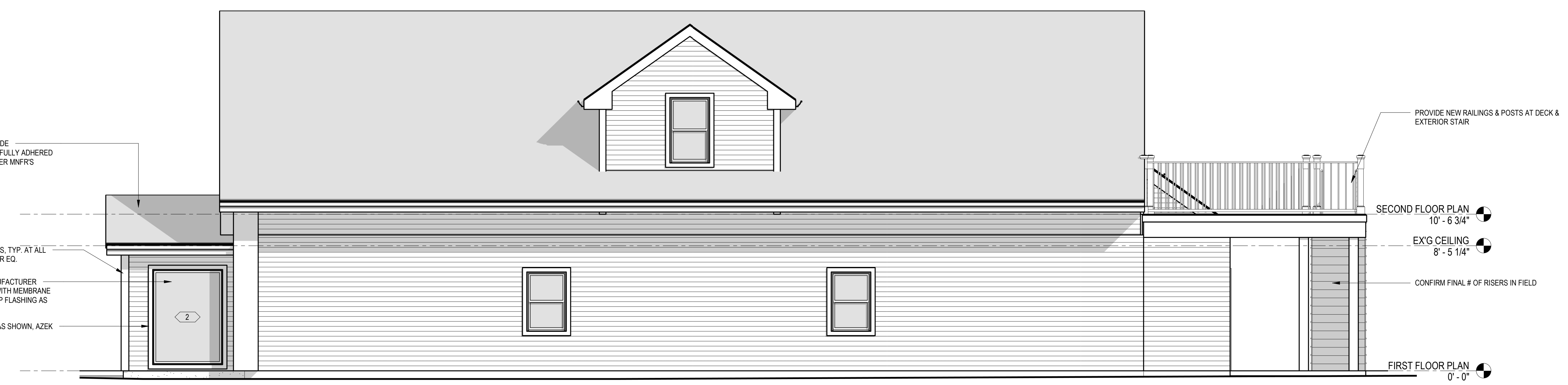
Description

Gazis & Associates
Addition / Renovation
617-619 Hazard Avenue Enfield, CT 06082

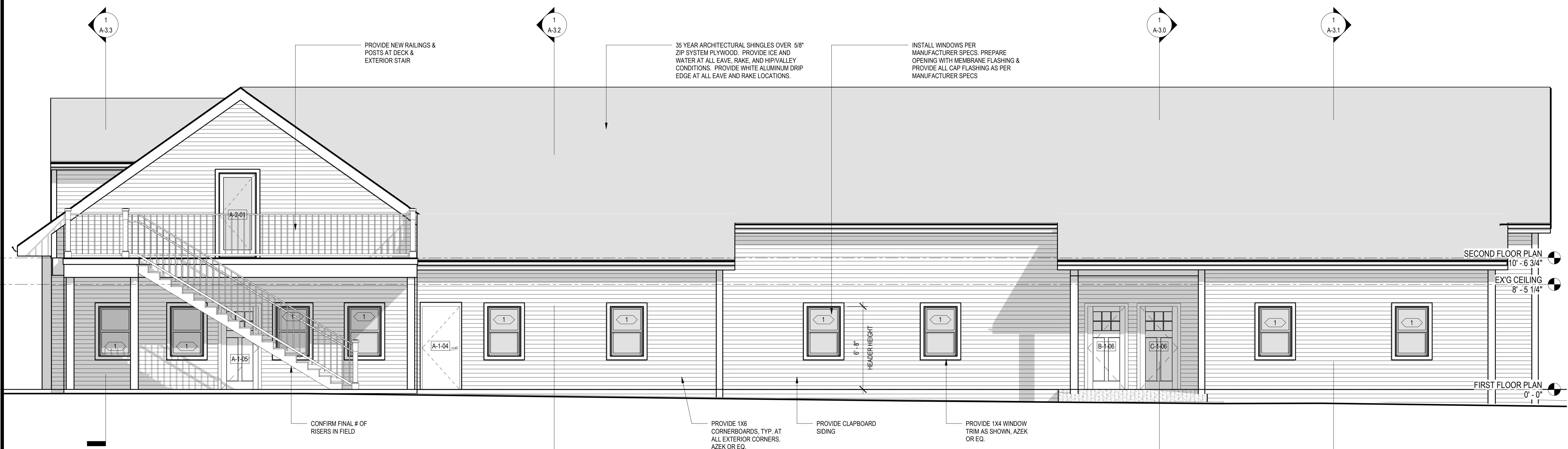


REAR & SIDE ELEVATIONS

A-2.1

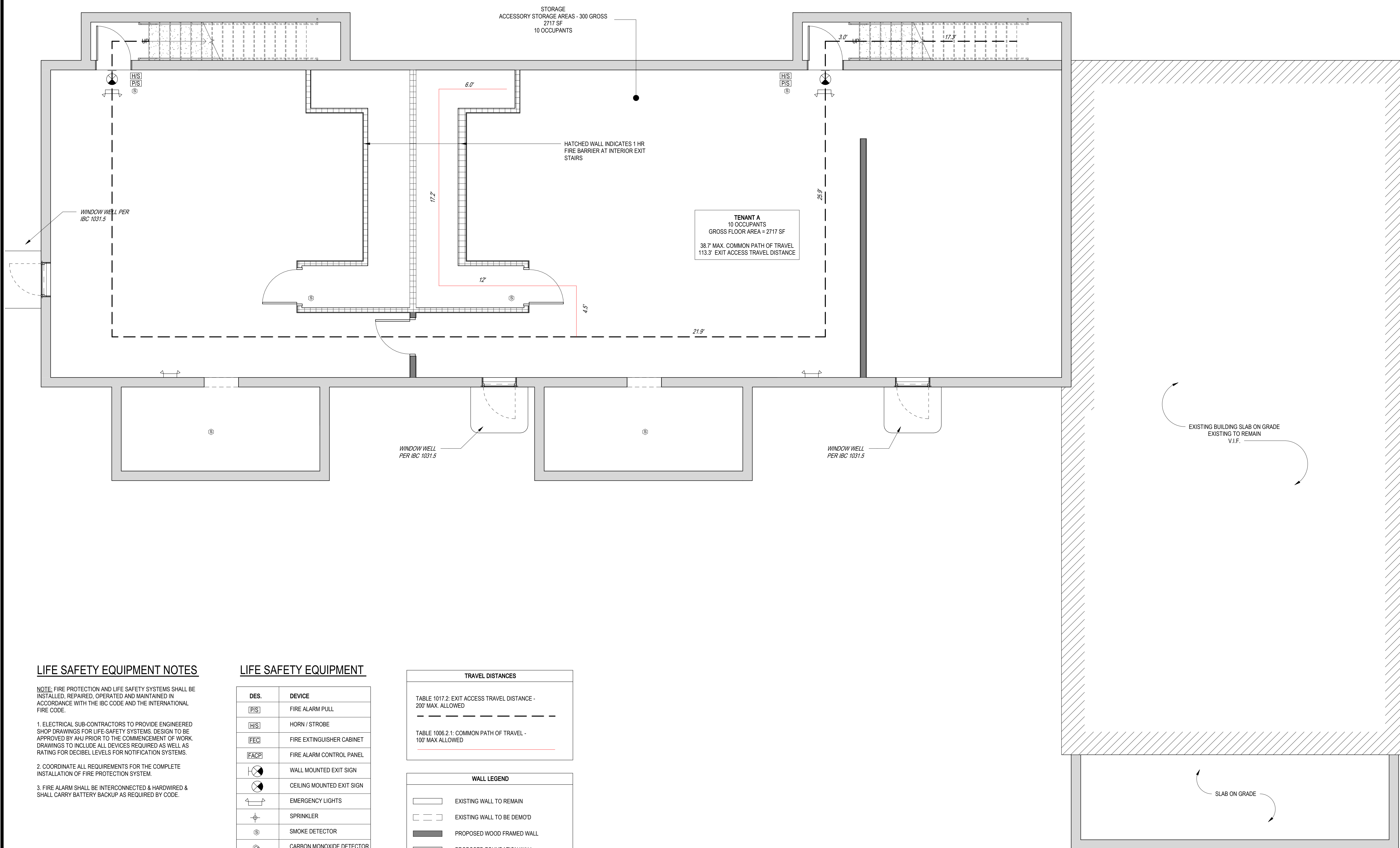


2 PROPOSED EAST ELEVATION
1/4" = 1'-0"



1 PROPOSED NORTH ELEVATION
1/4" = 1'-0"

Revisions/Project Status	
Issue	Date & Issue Description



LIFE SAFETY EQUIPMENT NOTES

NOTE: FIRE PROTECTION AND LIFE SAFETY SYSTEMS SHALL BE INSTALLED, REPAIRED, OPERATED AND MAINTAINED IN ACCORDANCE WITH THE IBC CODE AND THE INTERNATIONAL FIRE CODE.

- ELECTRICAL SUB-CONTRACTORS TO PROVIDE ENGINEERED SHOP DRAWINGS FOR LIFE-SAFETY SYSTEMS. DESIGN TO BE APPROVED BY AHJ PRIOR TO THE COMMENCEMENT OF WORK. DRAWINGS TO INCLUDE ALL DEVICES REQUIRED AS WELL AS RATING FOR DECIBEL LEVELS FOR NOTIFICATION SYSTEMS.
- COORDINATE ALL REQUIREMENTS FOR THE COMPLETE INSTALLATION OF FIRE PROTECTION SYSTEM.
- FIRE ALARM SHALL BE INTERCONNECTED & HARDWIRED & SHALL CARRY BATTERY BACKUP AS REQUIRED BY CODE.

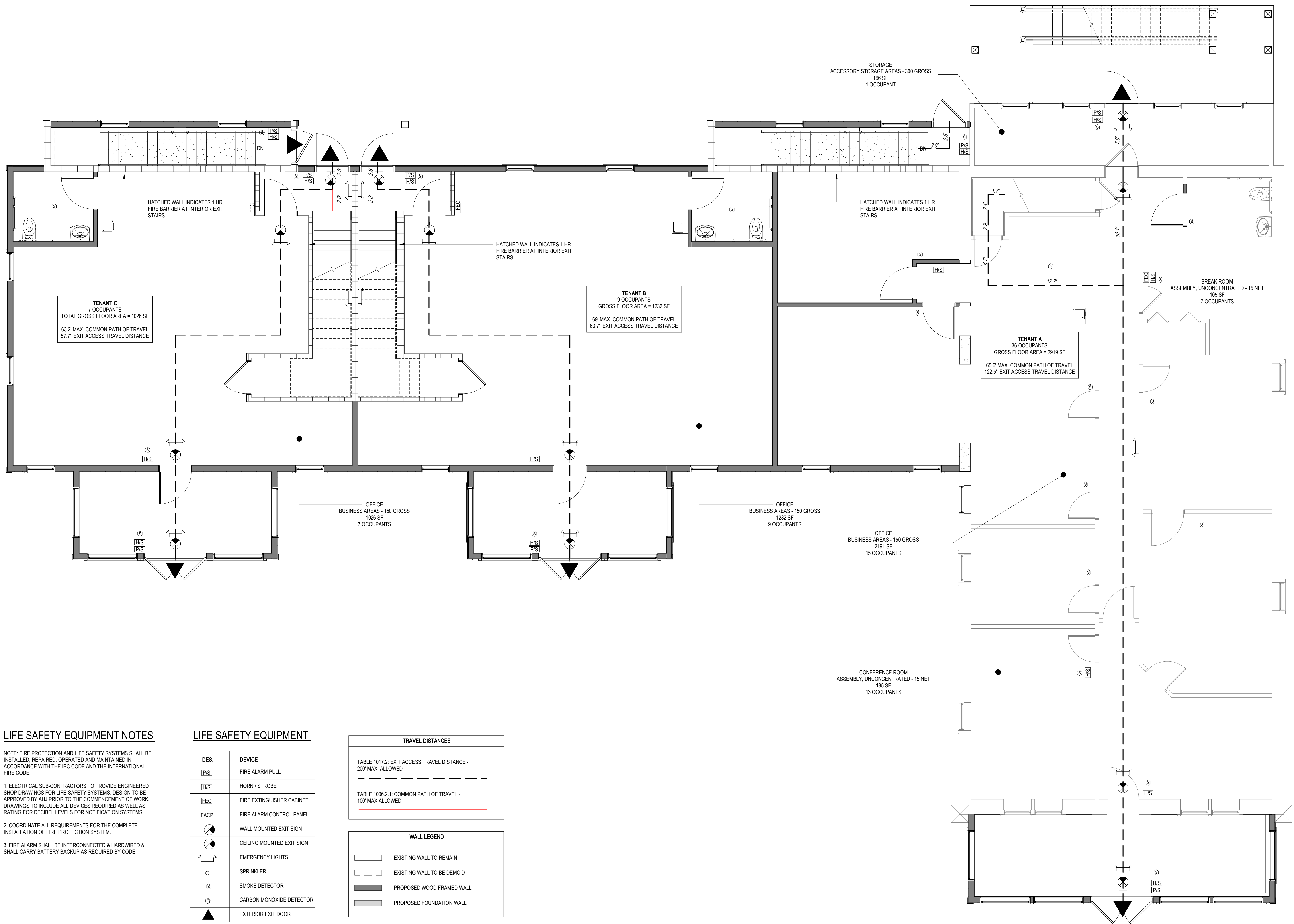
LIFE SAFETY EQUIPMENT

DES.	DEVICE
[PS]	FIRE ALARM PULL
[HS]	HORN / STROBE
[FEC]	FIRE EXTINGUISHER CABINET
[FACP]	FIRE ALARM CONTROL PANEL
[WES]	WALL MOUNTED EXIT SIGN
[CES]	CEILING MOUNTED EXIT SIGN
[EL]	EMERGENCY LIGHTS
[SPR]	SPRINKLER
[SD]	SMOKE DETECTOR
[CM]	CARBON MONOXIDE DETECTOR
[EED]	EXTERIOR EXIT DOOR

TRAVEL DISTANCES	
TABLE 1017.2: EXIT ACCESS TRAVEL DISTANCE - 200' MAX. ALLOWED	---
TABLE 1006.2.1: COMMON PATH OF TRAVEL - 100' MAX ALLOWED	---

WALL LEGEND	
[Solid Line]	EXISTING WALL TO REMAIN
[Dashed Line]	EXISTING WALL TO BE DEMO'D
[Thick Solid Line]	PROPOSED WOOD FRAMED WALL
[Thin Solid Line]	PROPOSED FOUNDATION WALL

Revisions/Project Status		
Issue	Date	Issue Description



LIFE SAFETY EQUIPMENT NOTES

NOTE: FIRE PROTECTION AND LIFE SAFETY SYSTEMS SHALL BE INSTALLED, REPAIRED, OPERATED AND MAINTAINED IN ACCORDANCE WITH THE IBC CODE AND THE INTERNATIONAL FIRE CODE.

- ELECTRICAL SUB-CONTRACTORS TO PROVIDE ENGINEERED SHOP DRAWINGS FOR LIFE-SAFETY SYSTEMS. DESIGN TO BE APPROVED BY AHJ PRIOR TO THE COMMENCEMENT OF WORK. DRAWINGS TO INCLUDE ALL DEVICES REQUIRED AS WELL AS RATING FOR DECIBEL LEVELS FOR NOTIFICATION SYSTEMS.
- COORDINATE ALL REQUIREMENTS FOR THE COMPLETE INSTALLATION OF FIRE PROTECTION SYSTEM.
- FIRE ALARM SHALL BE INTERCONNECTED & HARDWIRED & SHALL CARRY BATTERY BACKUP AS REQUIRED BY CODE.

LIFE SAFETY EQUIPMENT

DES.	DEVICE
(P/S)	FIRE ALARM PULL
(H/S)	HORN / STROBE
(FEC)	FIRE EXTINGUISHER CABINET
(FACP)	FIRE ALARM CONTROL PANEL
(Exit Sign)	WALL MOUNTED EXIT SIGN
(Ceiling Sign)	CEILING MOUNTED EXIT SIGN
(Emergency Light)	EMERGENCY LIGHTS
(Sprinkler)	SPRINKLER
(Smoke Detector)	SMOKE DETECTOR
(CO Detector)	CARBON MONOXIDE DETECTOR
(Exit Door)	EXTERIOR EXIT DOOR

TRAVEL DISTANCES

TABLE 1017.2: EXIT ACCESS TRAVEL DISTANCE - 200' MAX. ALLOWED

TABLE 1006.2.1: COMMON PATH OF TRAVEL - 100' MAX ALLOWED

WALL LEGEND

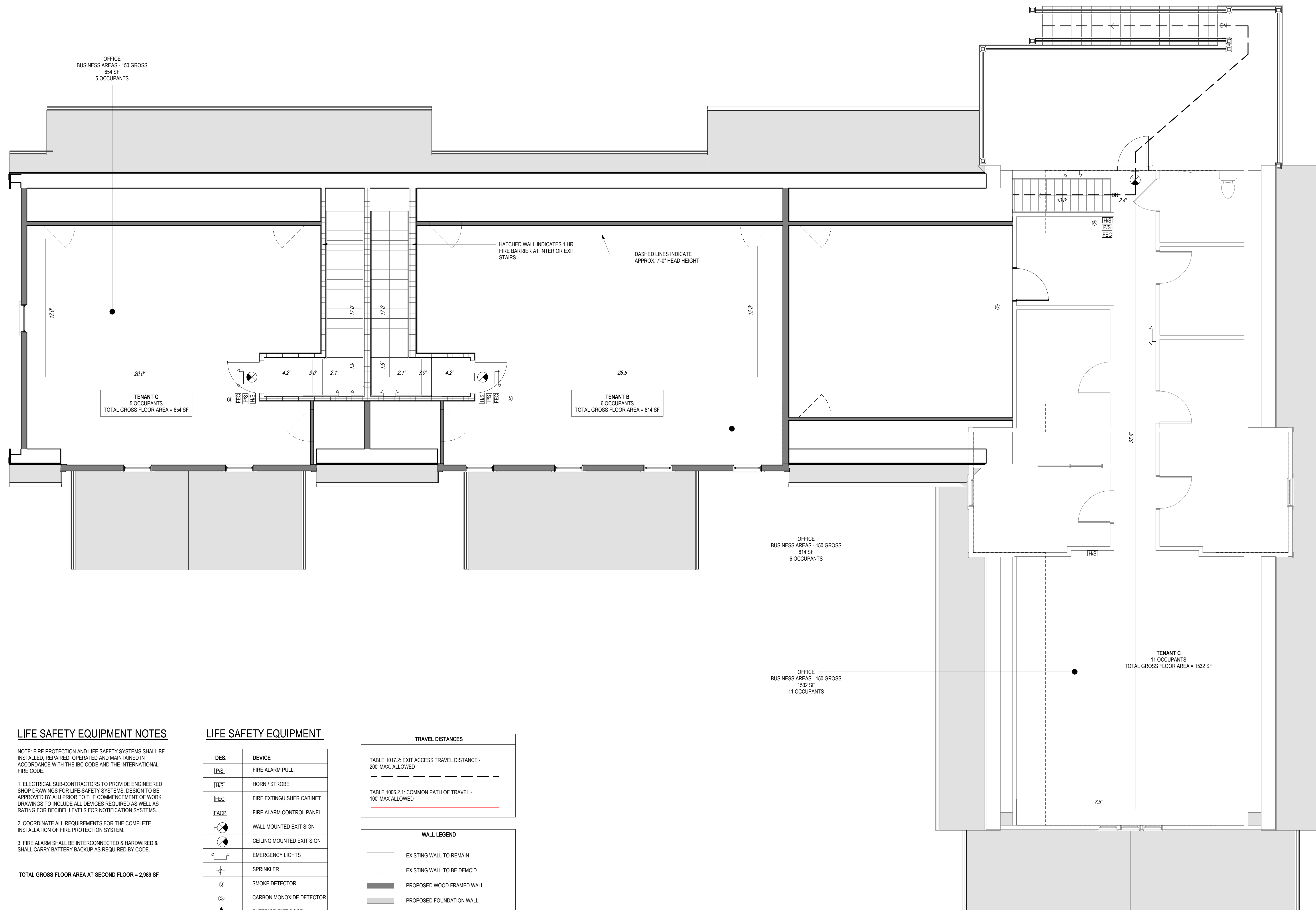
EXISTING WALL TO REMAIN

EXISTING WALL TO BE DEMO'D

PROPOSED WOOD FRAMED WALL

PROPOSED FOUNDATION WALL

Revisions/Project Status	
Issue	Date & Issue Description



LIFE SAFETY EQUIPMENT NOTES

NOTE: FIRE PROTECTION AND LIFE SAFETY SYSTEMS SHALL BE INSTALLED, REPAIRED, OPERATED AND MAINTAINED IN ACCORDANCE WITH THE IBC CODE AND THE INTERNATIONAL FIRE CODE.

- ELECTRICAL SUB-CONTRACTORS TO PROVIDE ENGINEERED SHOP DRAWINGS FOR LIFE-SAFETY SYSTEMS. DESIGN TO BE APPROVED BY AHJ PRIOR TO THE COMMENCEMENT OF WORK. DRAWINGS TO INCLUDE ALL DEVICES REQUIRED AS WELL AS RATING FOR DECIBEL LEVELS FOR NOTIFICATION SYSTEMS.
- COORDINATE ALL REQUIREMENTS FOR THE COMPLETE INSTALLATION OF FIRE PROTECTION SYSTEM.
- FIRE ALARM SHALL BE INTERCONNECTED & HARDWIRED & SHALL CARRY BATTERY BACKUP AS REQUIRED BY CODE.

TOTAL GROSS FLOOR AREA AT SECOND FLOOR = 2,989 SF

LIFE SAFETY EQUIPMENT

DES.	DEVICE
(PIS)	FIRE ALARM PULL
(HIS)	HORN / STROBE
(FEC)	FIRE EXTINGUISHER CABINET
(FACP)	FIRE ALARM CONTROL PANEL
(WMS)	WALL MOUNTED EXIT SIGN
(CMS)	CEILING MOUNTED EXIT SIGN
(EL)	EMERGENCY LIGHTS
(S)	SPRINKLER
(SD)	SMOKE DETECTOR
(CMD)	CARBON MONOXIDE DETECTOR
(EED)	EXTERIOR EXIT DOOR

TRAVEL DISTANCES

TABLE 1017.2: EXIT ACCESS TRAVEL DISTANCE - 200' MAX. ALLOWED

TABLE 1006.2.1: COMMON PATH OF TRAVEL - 100' MAX ALLOWED

WALL LEGEND

EXISTING WALL TO REMAIN

EXISTING WALL TO BE DEMO'D

PROPOSED WOOD FRAMED WALL

PROPOSED FOUNDATION WALL