



PROPERTY STATUS

Industrial/Flex Condo for lease in Hornbaker Industrial

OFFERING MEMORANDUM | 11490 ROBERTSON DRIVE | MANASSAS, VA

Exclusively Listed by

Ed Martin, CCIM - Principal Broker | (703) 867-3350 | ed@martincommercialpartners.com | 0225075345, Virginia

Each Office is Independently Owned and Operated
www.kwcommercial.com

KELLER WILLIAMS SOLUTIONS
8100 Ashton Ave #103
Manassas, VA 20109

The calculations and data presented are deemed to be accurate, but not guaranteed. They are intended for the purpose of illustrative projections and analysis. The information provided is not intended to replace or serve as substitute for any legal, accounting, investment, real estate, tax or other professional advice, consultation or service. The user of this software should consult with a professional in the respective legal, accounting, tax or other professional area before making any decisions.

Table of Contents



Executive Summary	3
Property Photos	4
Regional Map	7
Location Maps	8
Aerial Map	9
Business Map	10
Demographics	11
Disclaimer	12
Professional Bio	13

Disclaimer

All materials and information received or derived from KW Commercial its directors, officers, agents, advisors, affiliates and/or any third party sources are provided without representation or warranty as to completeness, veracity, or accuracy, condition of the property, compliance or lack of compliance with applicable governmental requirements, developability or suitability, financial performance of the property, projected financial performance of the property for any party's intended use or any and all other matters.

Neither KW Commercial its directors, officers, agents, advisors, or affiliates makes any representation or warranty, express or implied, as to accuracy or completeness of the materials or information provided, derived, or received. Materials and information from any source, whether written or verbal, that may be furnished for review are not a substitute for a party's active conduct of its own due diligence to determine these and other matters of significance to such party. KW Commercial will not investigate or verify any such matters or conduct due diligence for a party unless otherwise agreed in writing.

EACH PARTY SHALL CONDUCT ITS OWN INDEPENDENT INVESTIGATION AND DUE DILIGENCE.

Any party contemplating or under contract or in escrow for a transaction is urged to verify all information and to conduct their own inspections and investigations including through appropriate third-party independent professionals selected by such party. All financial data should be verified by the party including by obtaining and reading applicable documents and reports and consulting appropriate independent professionals. KW Commercial makes no warranties and/or representations regarding the veracity, completeness, or relevance of any financial data or assumptions. KW Commercial does not serve as a financial advisor to any party regarding any proposed transaction.

All data and assumptions regarding financial performance, including those used for financial modeling purposes, may differ from actual data or performance. Any estimates of market rents and/or projected rents that may be provided do not necessarily mean that rents can be established at or increased to that level. Parties must evaluate any applicable contractual and governmental limitations as well as market conditions, vacancy factors and other issues in order to determine rents from or for the property. Legal questions should be discussed by the party with an attorney. Tax questions should be discussed by the party with a certified public accountant or tax attorney. Title questions should be discussed by the party with a title officer or attorney. Questions regarding the condition of the property and whether the property complies with applicable governmental requirements should be discussed by the party with appropriate engineers, architects, contractors, other consultants, and governmental agencies. All properties and services are marketed by KW Commercial in compliance with all applicable fair housing and equal opportunity laws.

Executive Summary



Property Overview

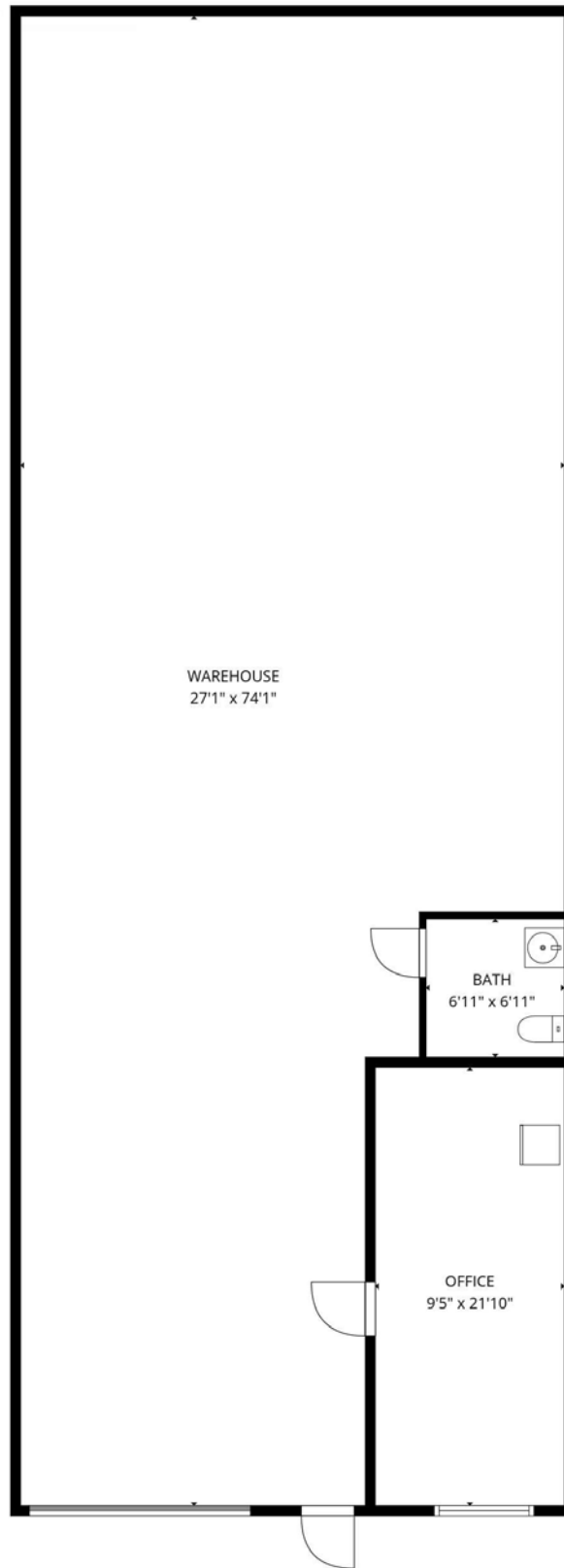
2000 SF Warehouse Condo for Lease in Manassas Bathroom and small office. Lease is NNN Space is occupied. Please do not disturb existing business. Showings by prior confirmed appt only. No Automotive

Building SF:	2000
Lease Rate:	\$17.50/Sf/NNN
Price:	\$0
Year Built:	2005
Zoning:	M1

Property Photos



Property Photos



TOTAL: 253 sq. ft

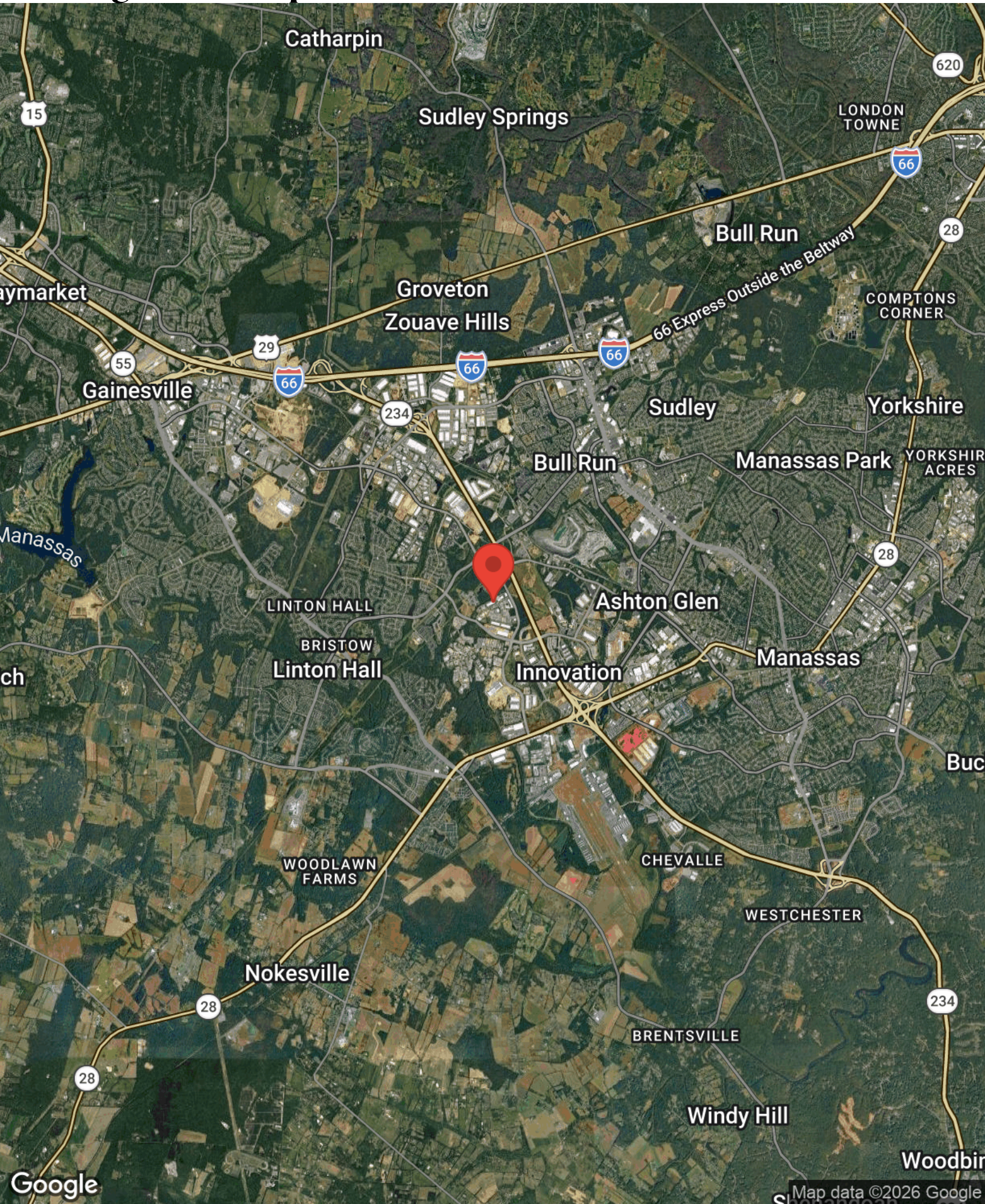
1st floor: 253 sq. ft

EXCLUDED AREAS: WAREHOUSE: 1731 sq. ft, WALLS: 122 sq. ft

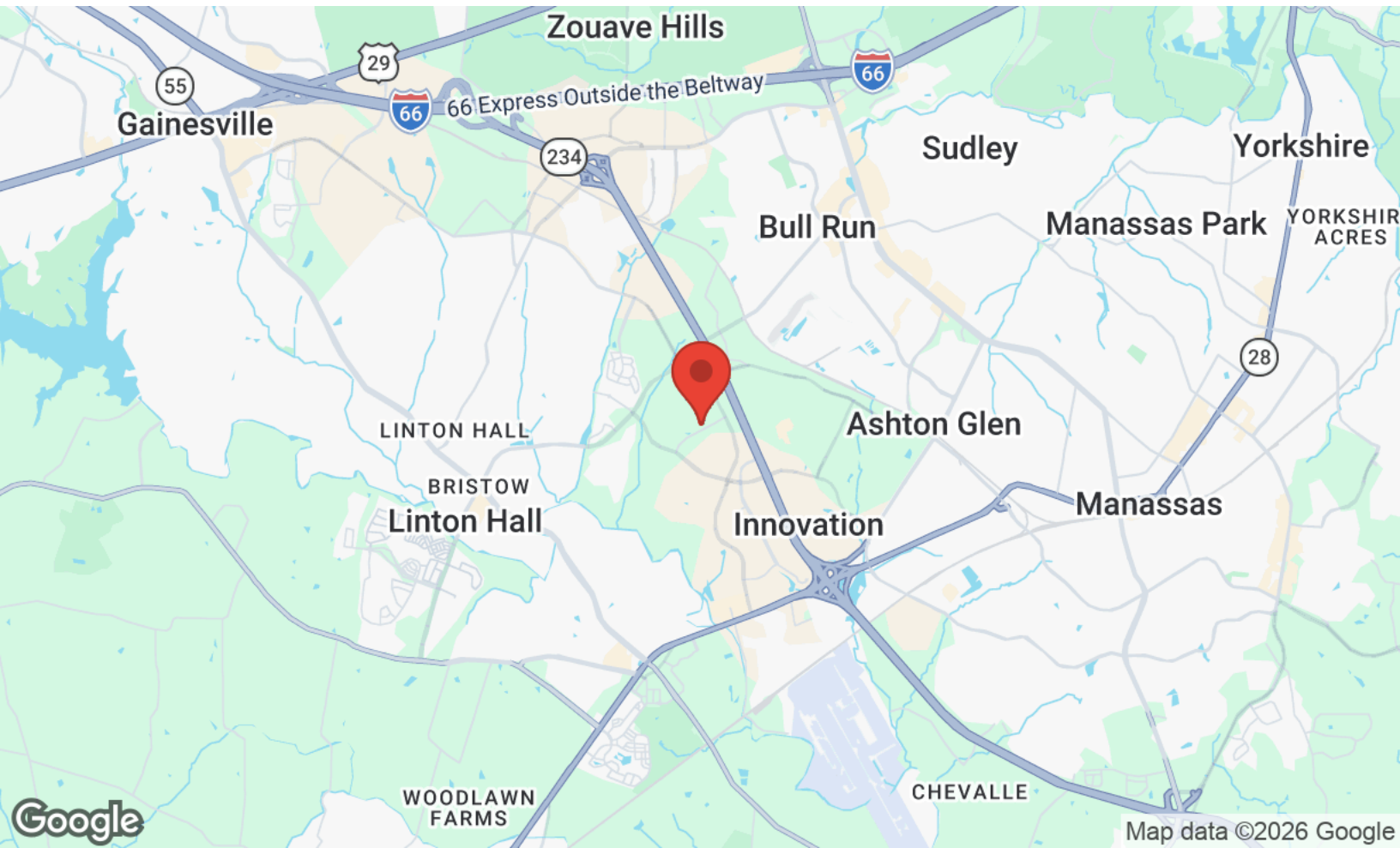
Property Photos



Regional Map



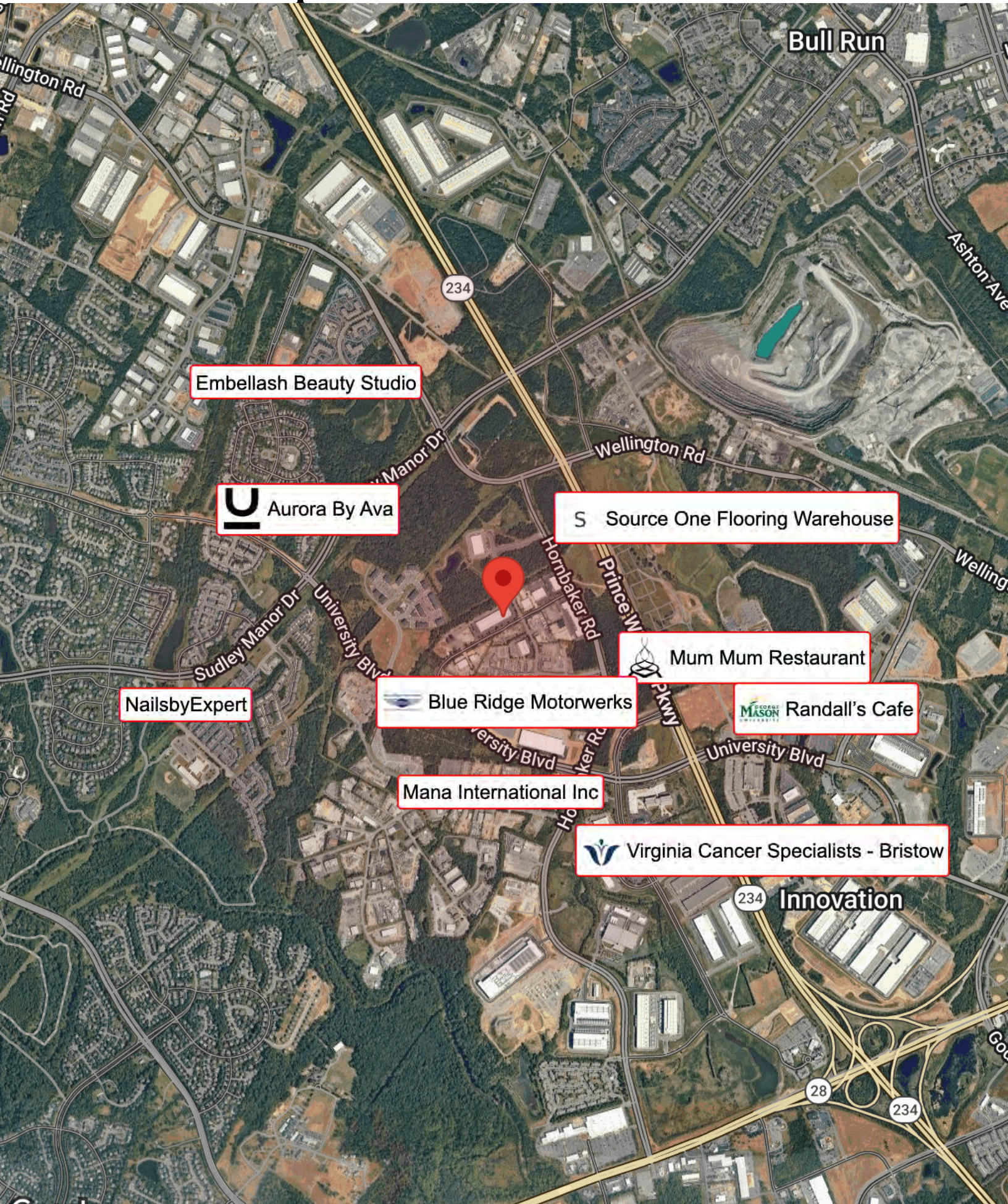
Location Maps



Aerial Map



Business Map



Embellash Beauty Studio

 Aurora By Ava

S Source One Flooring Warehouse

 Mum Mum Restaurant

 Randall's Cafe

 Blue Ridge Motorwerks

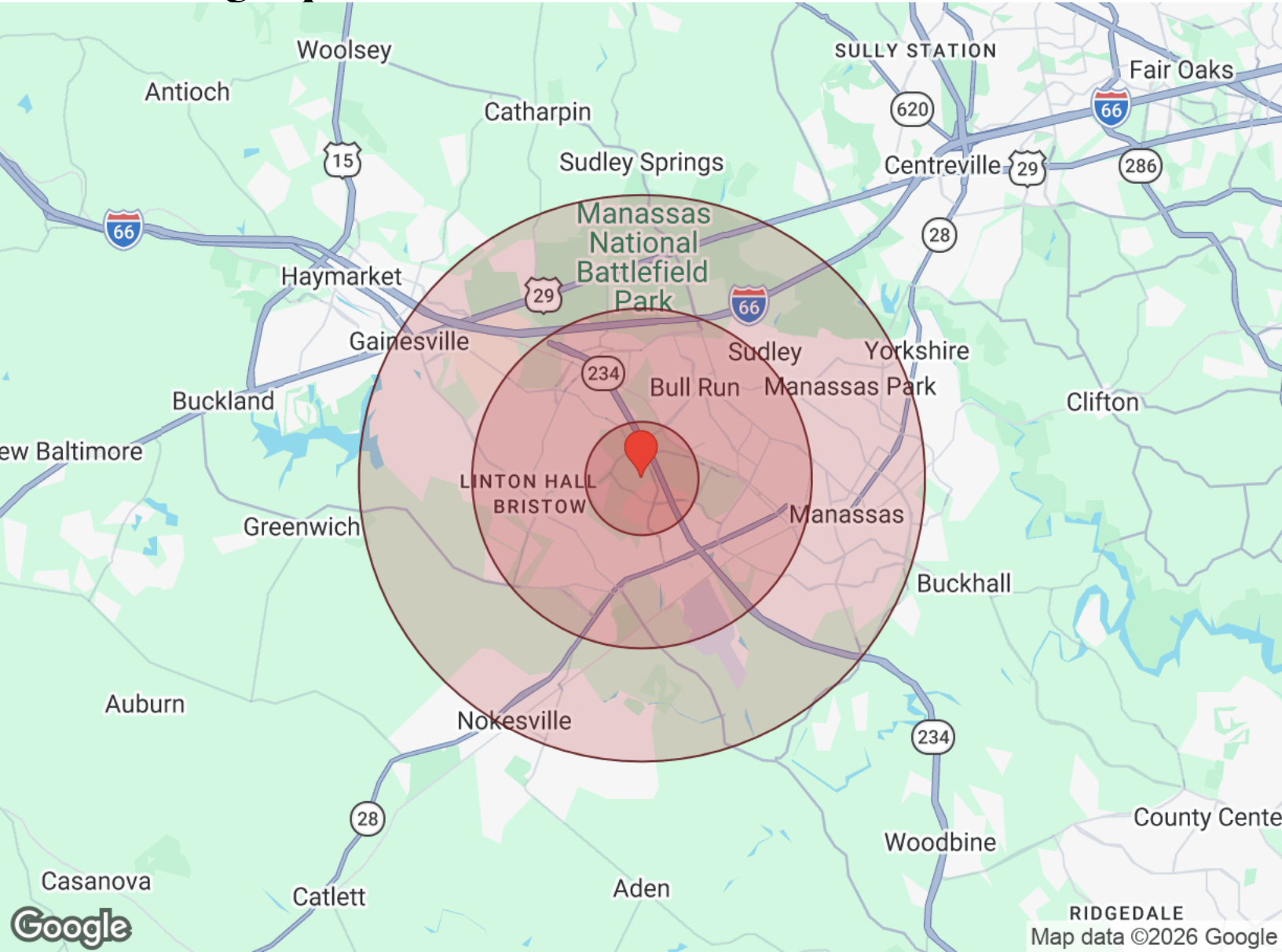
NailsbyExpert

Mana International Inc

 Virginia Cancer Specialists - Bristow

Innovation

Demographics



Distance: ● 1 Mile ● 3 Miles ● 5 Miles

Population	1 Mile	3 Miles	5 Miles
Male	2,971	36,814	84,885
Female	2,883	36,701	84,541
Total Population	5,854	73,516	169,426

Race / Ethnicity	1 Mile	3 Miles	5 Miles
White	2,632	27,429	62,976
Black	1,038	11,513	23,177
Am In/AK Nat	5	74	169
Hawaiian	5	51	85
Hispanic	1,018	22,319	57,944
Asian	866	9,035	18,552
Multiracial	253	2,823	5,896
Other	37	265	627

Housing	1 Mile	3 Miles	5 Miles
Total Units	2,249	24,335	54,963
Occupied	2,185	23,684	53,527
Owner Occupied	1,102	14,272	35,419
Renter Occupied	1,083	9,412	18,108
Vacant	64	652	1,437

Age	1 Mile	3 Miles	5 Miles
Ages 0 - 14	1,332	16,556	37,367
Ages 15 - 24	749	10,467	23,556
Ages 25 - 54	2,835	32,322	72,156
Ages 55 - 64	536	7,335	18,080
Ages 65+	402	6,836	18,267

Income	1 Mile	3 Miles	5 Miles
Median	\$137,722	\$125,867	\$125,626
Under \$15k	10	754	1,747
\$15k - \$25k	24	644	1,174
\$25k - \$35k	143	1,062	1,982
\$35k - \$50k	75	1,108	2,461
\$50k - \$75k	166	2,431	5,347
\$75k - \$100k	260	3,061	7,351
\$100k - \$150k	553	5,287	12,216
\$150k - \$200k	449	3,383	7,737
Over \$200k	507	5,951	13,512

Disclaimer



All materials and information received or derived from KW Commercial its directors, officers, agents, advisors, affiliates and/or any third party sources are provided without representation or warranty as to completeness, veracity, or accuracy, condition of the property, compliance or lack of compliance with applicable governmental requirements, developability or suitability, financial performance of the property, projected financial performance of the property for any party's intended use or any and all other matters.

Neither KW Commercial its directors, officers, agents, advisors, or affiliates makes any representation or warranty, express or implied, as to accuracy or completeness of the materials or information provided, derived, or received. Materials and information from any source, whether written or verbal, that may be furnished for review are not a substitute for a party's active conduct of its own due diligence to determine these and other matters of significance to such party. KW Commercial will not investigate or verify any such matters or conduct due diligence for a party unless otherwise agreed in writing.

EACH PARTY SHALL CONDUCT ITS OWN INDEPENDENT INVESTIGATION AND DUE DILIGENCE.

Any party contemplating or under contract or in escrow for a transaction is urged to verify all information and to conduct their own inspections and investigations including through appropriate third-party independent professionals selected by such party. All financial data should be verified by the party including by obtaining and reading applicable documents and reports and consulting appropriate independent professionals. KW Commercial makes no warranties and/or representations regarding the veracity, completeness, or relevance of any financial data or assumptions. KW Commercial does not serve as a financial advisor to any party regarding any proposed transaction.

All data and assumptions regarding financial performance, including that used for financial modeling purposes, may differ from actual data or performance. Any estimates of market rents and/or projected rents that may be provided to a party do not necessarily mean that rents can be established at or increased to that level. Parties must evaluate any applicable contractual and governmental limitations as well as market conditions, vacancy factors and other issues in order to determine rents from or for the property. Legal questions should be discussed by the party with an attorney. Tax questions should be discussed by the party with a certified public accountant or tax attorney. Title questions should be discussed by the party with a title officer or attorney. Questions regarding the condition of the property and whether the property complies with applicable governmental requirements should be discussed by the party with appropriate engineers, architects, contractors, other consultants, and governmental agencies. All properties and services are marketed by KW Commercial in compliance with all applicable fair housing and equal opportunity laws.

Exclusively Listed by

Ed Martin, CCIM - Principal Broker

☎ (703) 867-3350

✉ ed@martincommercialpartners.com

📍 0225075345, Virginia

The calculations and data presented are deemed to be accurate, but not guaranteed. They are intended for the purpose of illustrative projections and analysis. The information provided is not intended to replace or serve as substitute for any legal, accounting, investment, real estate, tax or other professional advice, consultation or service. The user of this software should consult with a professional in the respective legal, accounting, tax or other professional area before

Professional Bio



ED MARTIN, CCIM

Principal Broker
O: (703) 867-3350
C: (703) 867-3350
ed@martincommercialpartners.com
0225075345, Virginia

Keller Williams Solutions
8100 Ashton Ave #103 Manassas, VA 20109

Ed Martin has been involved in Real Estate Brokerage since 2004. Ed has a background as an executive for large organizations, and through this experience he has developed the historical perspective of a user. Ed continually looks at things through a strategy to execution frame for his clients. With a focus on Business Owners and Investors, he brings a broad knowledge base and business experience that allows his clients (Sellers/Landlords, or Buyers/Tenants) to benefit from having deep expertise on their team. Ed's strong attention to detail, creativity, and his full-service approach gives his clients an advantage when negotiating and structuring a transaction. Ed is a CCIM, which gives him the capabilities to perform a complete financial analysis and take a deeper look into the transactions he participates in. This allows Ed to provide a high level of Decision Support to his clients. Ed serves as the Commercial Director and Principal Broker for the Keller Williams Manassas, VA Market Center. Ed also has a Masters in Business Administration. In 2012, Ed was named a top 100 IT leader by Computerworld Magazine.

Please Contact us to schedule a tour!

OFFERING MEMORANDUM | 11490 ROBERTSON DRIVE | MANASSAS, VA

Exclusively Listed by

Ed Martin, CCIM - Principal Broker

☎ (703) 867-3350

✉ ed@martincommercialpartners.com

📍 0225075345, Virginia

Keller Williams Solutions

8100 Ashton Ave #103

Manassas, VA 20109

Each Office is Independently Owned and Operated



www.kwcommercial.com