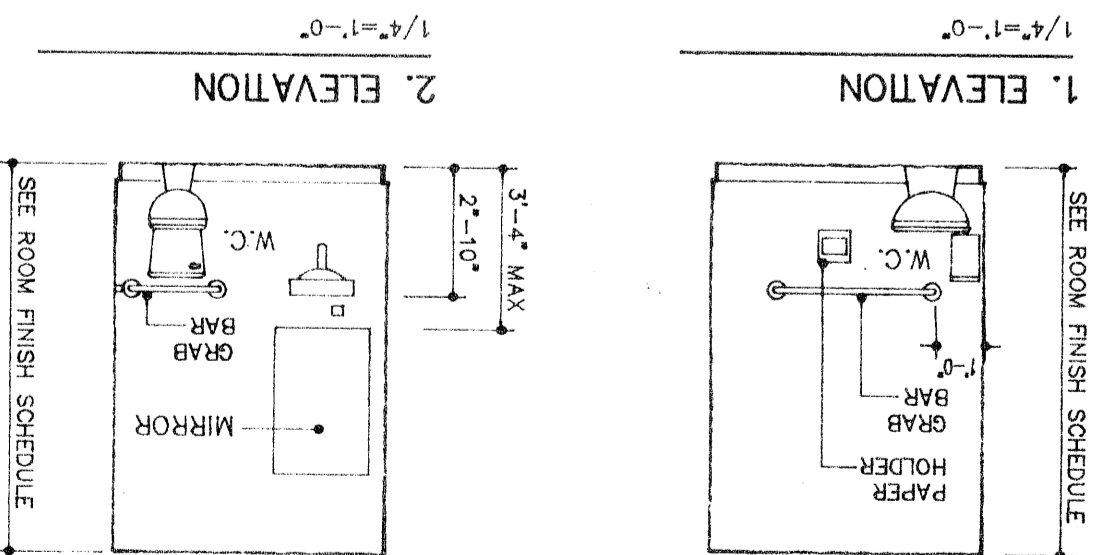
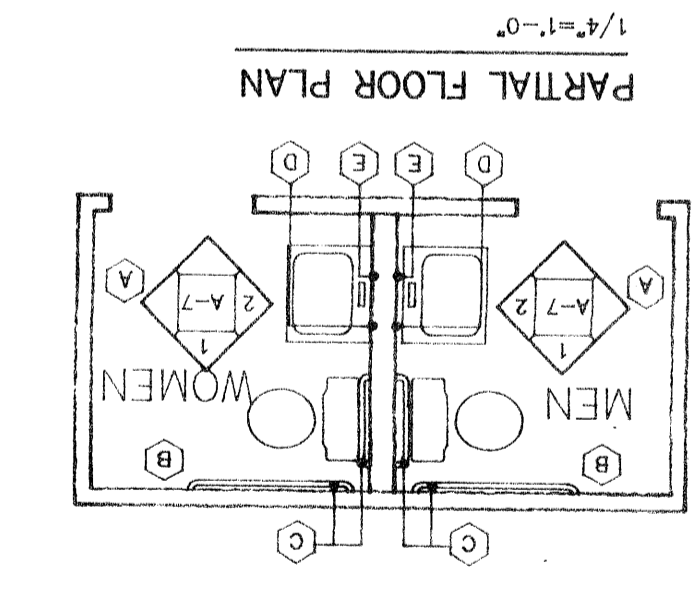
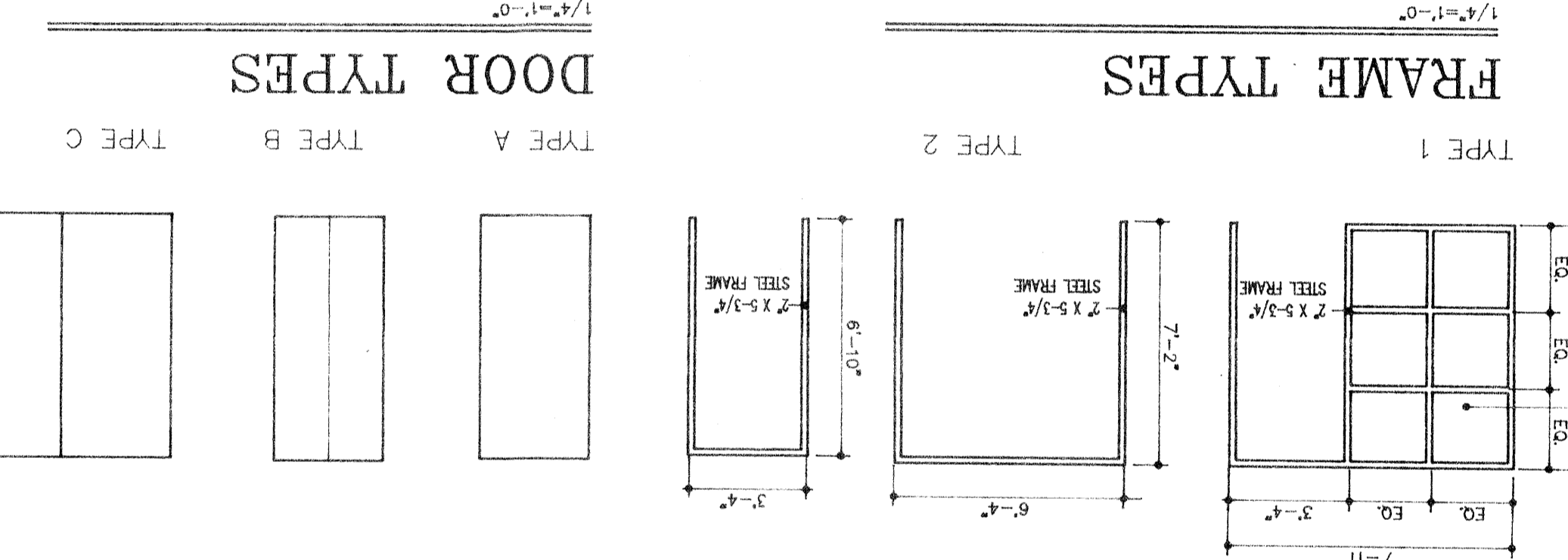


- GENERAL NOTES:**
1. PROVIDE FRAMING FOR WALL TO COORDINATE WITH RECESSED CABINERY ELEVATIONS, SHEET A-3.
 2. WALL DESIGNATION INDICATES ONE-HOUR FIRE RATED PARTITION. PROVIDE 1-LAYER 5/8" THICK TYPE X FIRECODE GYP. BD. EACH SLAB TO UNDER SOBS OF ROOF DECK. SEAL ALL PENETRATIONS SIDE OF FRAMING. PARTITION SHALL BE CONTINUOUS FROM FLOOR TO ENSURE COMPLIANCE WITH FIRE RATING. PROVIDE BATT INSULATION AT EXTERIOR WALLS, WINDOWS, DOORS, ROOF STRUCTURE AND MECH. STORAGE EQUIPMENT BY OWNER.
 3. PARTITION AND CABINERY ABOUT WINDOW.
 4. THE SCOPE OF THIS PROJECT INCLUDES: INTERIOR COMPLETION (TERMINAL IMPROVEMENT) AND CONSTRUCTION OF THE EXTERIOR CARPORT STRUCTURE. ALL EXTERIOR WALLS, WINDOWS, DOORS, ROOF STRUCTURE AND SITE WORK HAVE BEEN PREVIOUSLY COMPLETED.
 5. FIRE STORAGE EQUIPMENT BY OWNER.
 6. PROVIDE 2-LAYERS OF 5/8" THICK TYPE X GYP. BD. TO FORM 1-HR. RATED CEILING FOR CORRIDOR SPACE.

ROOM FINISH SCHEDULE

ROOM NO.	ROOM NAME	FLOORS	BASES	WAINSCOTS	WALLS	CEILING	REMARKS
100	LOBBY						
101	WAITING						
102	RECEPTION/RECORDS						
103	HALLWAY						
104	WOMEN						
105	MEN						
106	WORK AREA						
107	NURSE						
108	OFFICE MANAGER						
109	TRANSCRIPTION						
110	RECORDS						
111	HALL						
112	EXAM 7						
113	EXAM 6						
114	EXAM 5						
115	EXAM 4						
116	EXAM 3						
117	EXAM 2						
118	EXAM 1						
119	DOCTOR 1						
120	DOCTOR 2						
121	DOCTOR 3						
122	DOCTOR 4						
123	DOCTOR 5						
124	STORAGE						
125	MECHANICAL						
126	LOUNGE						
127	WOMEN						
128	HALL						
129	STORAGE						
130	STORAGE						

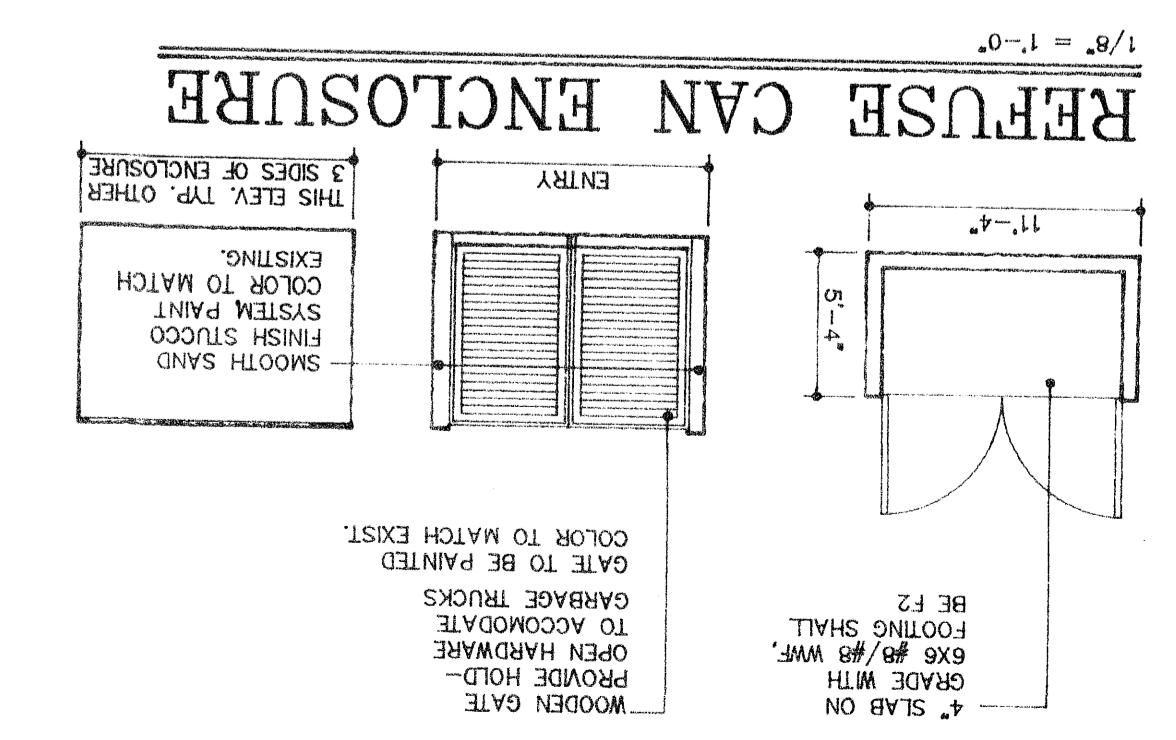


TOILET & BATH ACCESSORY SCHEDULE

MARK	DESCRIPTION	QUANTITY	UNIT	NOTES
(A)	PAPER TOWEL DISPENSER TRASH RECEPTACLE	3	A.F.F.	HEIGHT IS TO CENTRLINE OF OPERABLE PART
(B)	TOILET TISSUE DISPENSER	1	A.F.F.	HEIGHT IS TO CENTRLINE OF OPERABLE PART
(C)	GRAB BAR (24" L. BEHIND TOILET, 42" L. BESIDE TOILET)	2	A.F.F.	CENTRLINE OF GRAB BAR
(D)	GRAB BAR (24" L. BEHIND TOILET, 42" L. BESIDE TOILET)	3	A.F.F.	HEIGHT IS TO CENTRLINE OF OPERABLE PART
(E)	SOAP DISPENSER	3	A.F.F.	HEIGHT IS TO CENTRLINE OF OPERABLE PART
(F)	MIRROR (HANDICAPPED)	3	A.F.F.	TO BOTTOM OF REFL. SURFACE

DOOR AND FRAME SCHEDULE

DOOR NO.	TYPE	SIZE	MAT.	FINISH	FRAME	RATING	HARDWARE	REMARKS
1	A	3'-0" x 7'-0"	1	3/4"	S.C. WD.	PAINT	N.A.	
2	A	3'-0" x 6'-8"	1	3/4"	S.C. WD.	PAINT	N.A.	
3	A	3'-0" x 6'-8"	1	3/4"	S.C. WD.	PAINT	N.A.	
4	A	3'-0" x 6'-8"	1	3/4"	S.C. WD.	PAINT	N.A.	
5	A	3'-0" x 6'-8"	1	3/4"	S.C. WD.	PAINT	N.A.	
6	A	3'-0" x 6'-8"	1	3/4"	S.C. WD.	PAINT	N.A.	
7	A	3'-0" x 6'-8"	1	3/4"	S.C. WD.	PAINT	N.A.	
8	A	3'-0" x 6'-8"	1	3/4"	S.C. WD.	PAINT	N.A.	
9	A	3'-0" x 6'-8"	1	3/4"	S.C. WD.	PAINT	N.A.	
10	A	3'-0" x 6'-8"	1	3/4"	S.C. WD.	PAINT	N.A.	
11	A	3'-0" x 6'-8"	1	3/4"	S.C. WD.	PAINT	N.A.	
12	A	3'-0" x 6'-8"	1	3/4"	S.C. WD.	PAINT	N.A.	
13	A	3'-0" x 6'-8"	1	3/4"	S.C. WD.	PAINT	N.A.	
14	A	3'-0" x 6'-8"	1	3/4"	S.C. WD.	PAINT	N.A.	
15	A	3'-0" x 6'-8"	1	3/4"	S.C. WD.	PAINT	N.A.	
16	A	3'-0" x 6'-8"	1	3/4"	S.C. WD.	PAINT	N.A.	
17	A	3'-0" x 6'-8"	1	3/4"	S.C. WD.	PAINT	N.A.	
18	A	3'-0" x 6'-8"	1	3/4"	S.C. WD.	PAINT	N.A.	
19	A	3'-0" x 6'-8"	1	3/4"	S.C. WD.	PAINT	N.A.	
20	A	3'-0" x 6'-8"	1	3/4"	S.C. WD.	PAINT	N.A.	
21	B	3'-0" x 6'-8"	1	3/4"	S.C. WD.	PAINT	N.A.	
22	B	3'-0" x 6'-8"	1	3/4"	S.C. WD.	PAINT	N.A.	
23	B	3'-0" x 6'-8"	1	3/4"	S.C. WD.	PAINT	N.A.	
24	A	3'-0" x 6'-8"	1	3/4"	S.C. WD.	PAINT	N.A.	
25	A	3'-0" x 6'-8"	1	3/4"	S.C. WD.	PAINT	N.A.	
26	A	3'-0" x 6'-8"	1	3/4"	S.C. WD.	PAINT	N.A.	
27	C	6'-0" x 7'-0"	1	3/4"	S.C. WD.	PAINT	N.A.	
28	C	6'-0" x 7'-0"	1	3/4"	S.C. WD.	PAINT	N.A.	
29	A	3'-0" x 7'-0"	1	3/4"	S.C. WD.	PAINT	N.A.	



TOILET NOTES:

1. ALL PLUMBING FIXTURES, GRAB BARS, AND ACCESSORIES SHALL BE PROVIDED AND INSTALLED PER A.D.A. AND FLORIDA DEPT. OF COMMUNITY AFFAIRS HANDICAPPED CODES.
2. CONTRACTOR TO PROVIDE AND INSTALL BLOCKING FOR ALL TOILET ACCESSORIES.
3. ALL SOAP DISPENSERS TO BE INSTALLED OVER SINKS TO ENSURE LEAKING SOAP DOES NOT DRIP ONTO FLOOR SURFACE.

3977 SF

SHEET A-1

PROJECT: MANATEE SURGICAL ASSOCIATES
BAY AREA MEDICAL COMPLEX, BRADENTON, FLORIDA

FLOOR PLAN

REVISIONS: DATE

JOB NUMBER: 9416
DRAWN: JBT
CHECKED: RWF
SCALE: 1/8" = 1'-0"
DATE: MAY 25, 1994

richard fawley architects, inc.
interior design-land planning
1001 manatee ave. w. bradenton florida 34205
tel. 813.750.0009 fax 813.749.5747

lic. # AA 0001560

Exhibit