

PORT PLAZA

NEWBURYPORT,
MASSACHUSETTS



BRIAN ROACHE

617.239.3638

broache@atlanticretail.com

RACHAEL WILLARD

617.239.3603

rwillard@atlanticretail.com

1,420 - 50,851 SF
FOR LEASE

PROJECT HIGHLIGHTS

- Big box and shop space available
- 1,400 SF & 50,851 SF available
- \$4.50 NNN
- 19,773 ADT on Storey Ave
- Strong visibility to Storey Ave and Low St

DEMOGRAPHICS



TOTAL POPULATION

3 MILES	5 MILES	7 MILES
30,753	60,404	82,831



MEDIAN HH INCOME

3 MILES	5 MILES	7 MILES
\$87,176	\$83,763	\$85,886



BRIAN ROACHE

617.239.3638

broache@atlanticretail.com

RACHAEL WILLARD

617.239.3603

rwillard@atlanticretail.com

1,420 - 50,851 SF FOR LEASE

NEWBURYPORT, MA



SIGNED LEASE

PORT
BEER
& WINE

50,851 SF
AVAILABLE

1,420 SF
AVAILABLE

12,276 ADT

shaws

@ pure barre



DUNKIN'

verizon



CHASE

ConvenientMD
Quality Care. Fast. Easy. URGENT CARE.

club pilates



19,773 ADT

Storey Ave

113



BRIAN ROACHE

617.239.3638

broache@atlanticretail.com

RACHAEL WILLARD

617.239.3603

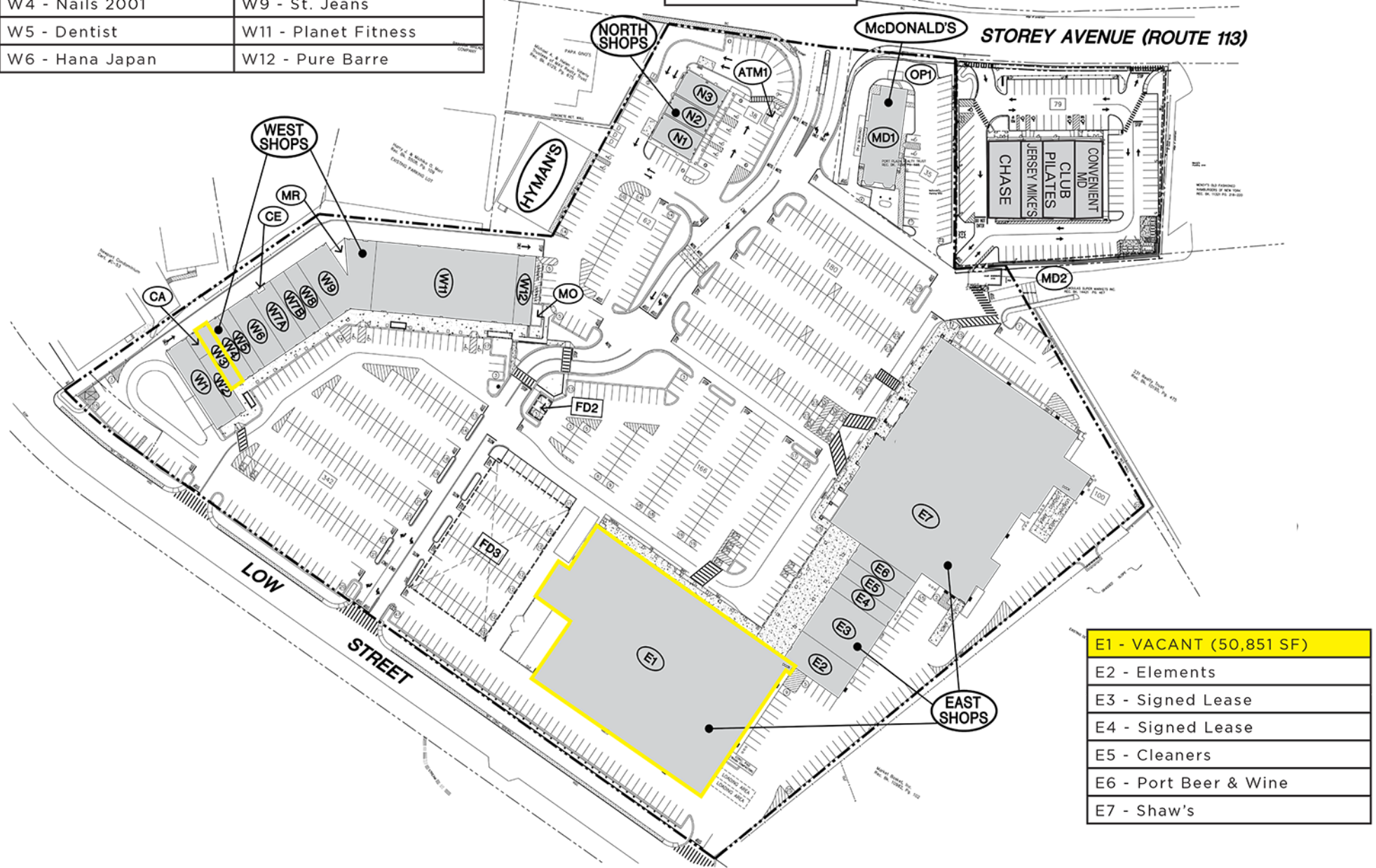
rwillard@atlanticretail.com

1,420 - 50,851 SF FOR LEASE

NEWBURYPORT, MA

W1 - Santander	W7A - AAA
W2 - China Wok	W7B - Children's Orchard
W3 - VACANT (1,420 SF)	W8 - Supercuts
W4 - Nails 2001	W9 - St. Jeans
W5 - Dentist	W11 - Planet Fitness
W6 - Hana Japan	W12 - Pure Barre

N1 - Dunkin Donuts
N2 - Verizon
N3 - Ohana Kitchen



E1 - VACANT (50,851 SF)
E2 - Elements
E3 - Signed Lease
E4 - Signed Lease
E5 - Cleaners
E6 - Port Beer & Wine
E7 - Shaw's



BRIAN ROACHE

617.239.3638

broache@atlanticretail.com

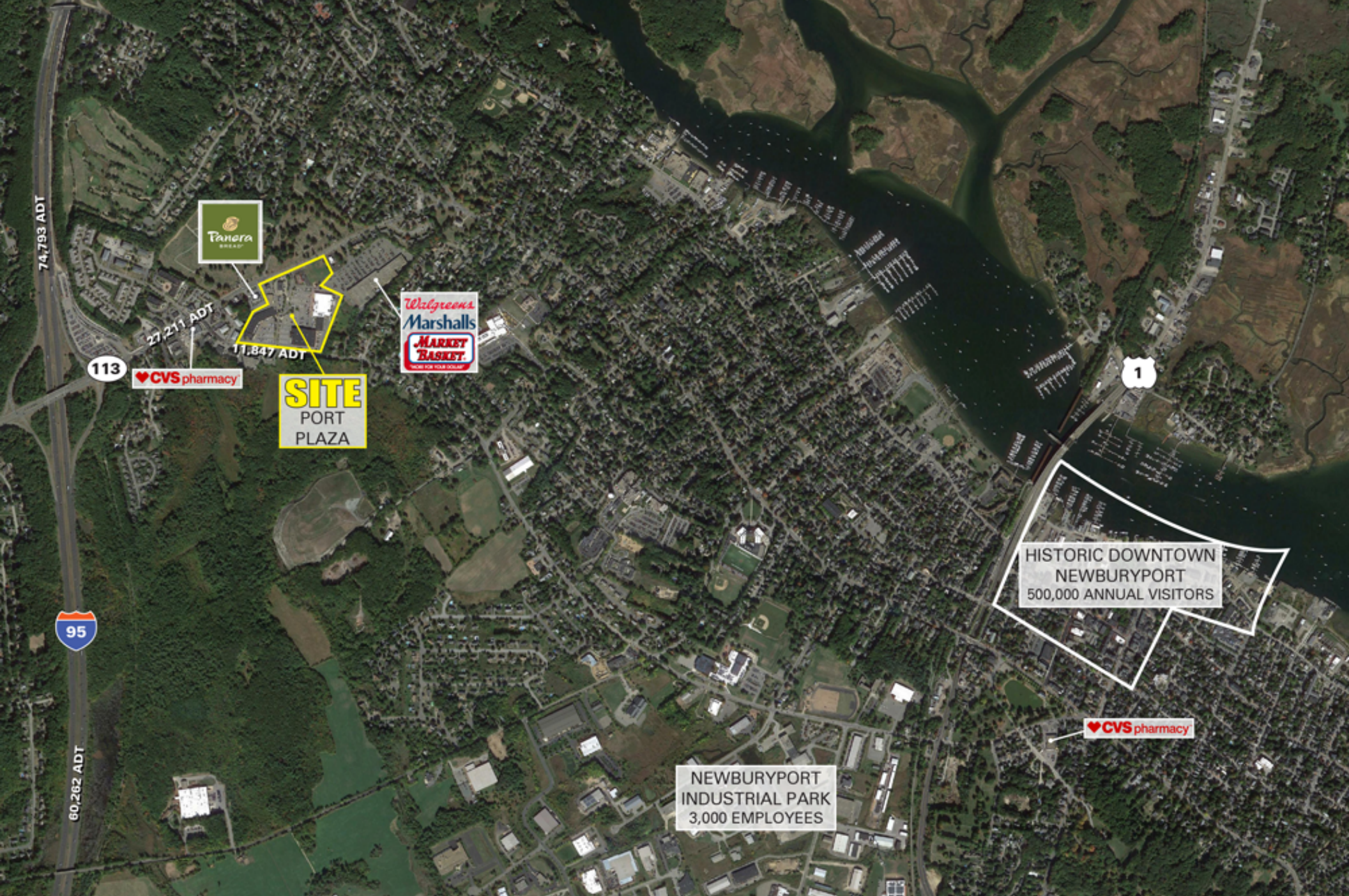
RACHAEL WILLARD

617.239.3603

rwillard@atlanticretail.com

1,420 - 50,851 SF FOR LEASE

NEWBURYPORT, MA



BRIAN ROACHE

617.239.3638

broache@atlanticretail.com

RACHAEL WILLARD

617.239.3603

rwillard@atlanticretail.com

1,420 - 50,851 SF FOR LEASE

NEWBURYPORT, MA