

Available Medical Office Space for Lease

# Verdugo Hills Professional Bldg I & II

1808 & 1818 Verdugo Boulevard, Glendale, CA 91208



For Leasing Information:

Leslie Price

Director, Leasing

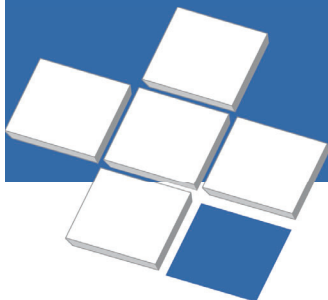
Phone: 858-794-1900

Lprice@pmbres.com

www.pmbres.com

CA Lic. 02131283

- Building 1: 64,000 SF Medical Office Building
- Building 2: 43,000 SF Medical Office Building
- Newly Upgraded Common Areas
- Adjacent to USC Verdugo Hills Hospital
- Free Parking



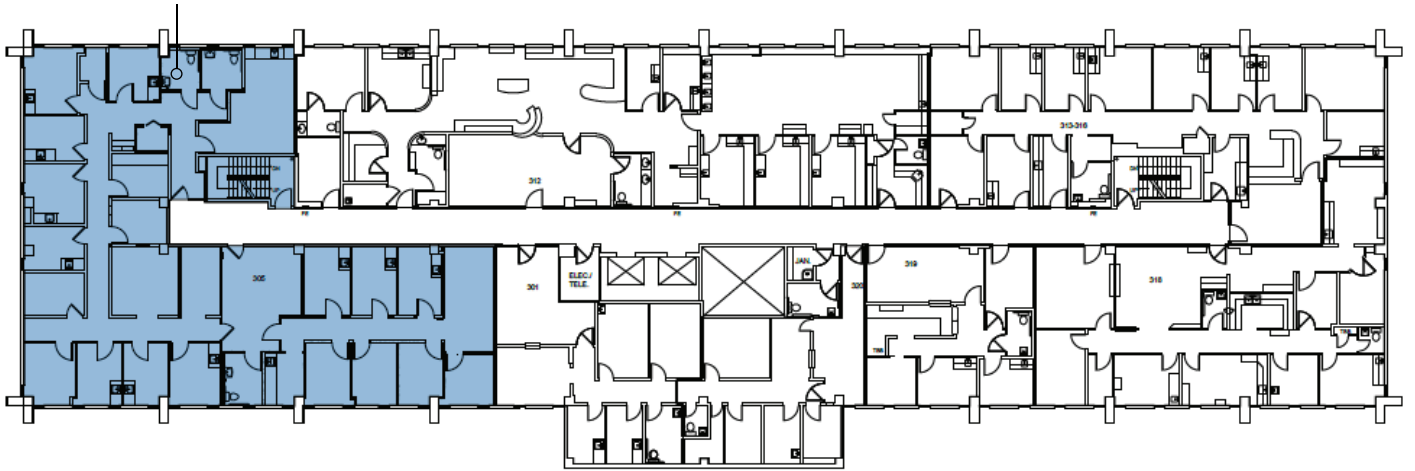
**PMB**  
Real Estate Services  
*Real Estate Management Solutions for Healthcare*



# 1808 Verdugo Boulevard

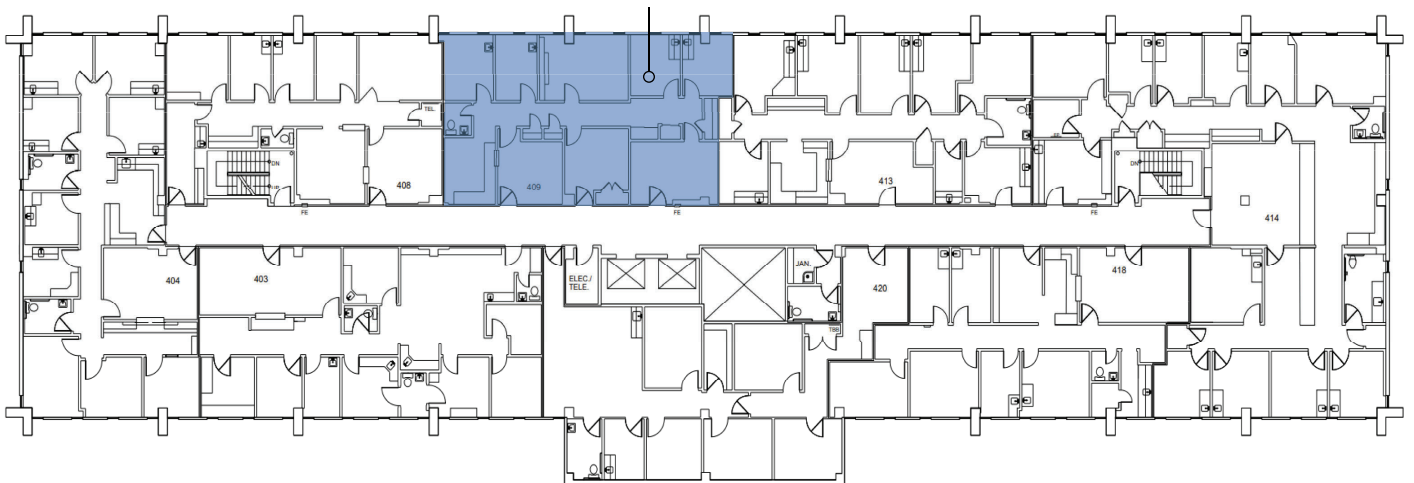
## 3<sup>rd</sup> Floor Availabilities

Suite 305  
4,401 RSF



## 4<sup>th</sup> Floor Availabilities

Suite 409  
1,627 RSF



For Leasing Information:

Leslie Price | Director, Leasing

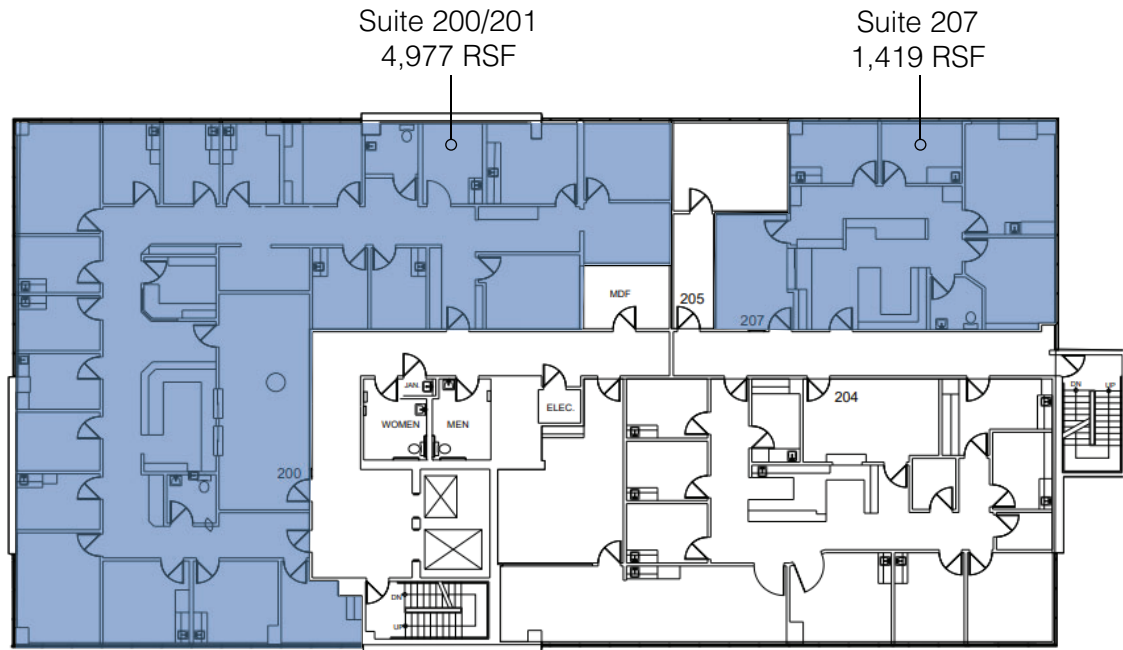
Phone: 858-794-1900 | [Lprice@pmbres.com](mailto:Lprice@pmbres.com)

[www.pmbres.com](http://www.pmbres.com) | CA Lic. 02131283



# 1818 Verdugo Boulevard

## 2<sup>nd</sup> Floor Availabilities



For Leasing Information:  
Leslie Price | Director, Leasing  
Phone: 858-794-1900 | [Lprice@pmbres.com](mailto:Lprice@pmbres.com)  
[www.pmbres.com](http://www.pmbres.com) | CA Lic. 02131283