

# 1009

## SECOND AVENUE

MIDTOWN EAST, NYC

Between East 53<sup>rd</sup> & 54<sup>th</sup> Streets

RESTAURANT FOR LEASE



PROPERTY INFORMATION

### APPROXIMATE SIZE

Ground Floor: 2,188 SF

Lower Level: 1,120 SF

### ASKING RENT

\$28,000/Month

### POSSESSION

Arranged

### TERM

10-15 Years

### FRONTAGE

15 FT

### COMMENTS

- Located at the base of a newly developed 19-story luxury residential condominium featuring high-end amenities
- Delivered white-box with black iron venting and gas in place
- Situated in an affluent Upper East Side corridor alongside established retailers including Equinox, Tomi Jazz, Lenwich, and Emack & Bolio's
- Dense residential and office population generating strong daytime and evening foot traffic

### NEIGHBORS

Equinox • The Smith • La Pecora Bianca • Nuts Factory • Madam Mikette's • Tomi Jazz • Cello Wine • Matto • Tal Bagels • The Greats of Craft • Lenwich • Pinkberry • Animo! • Emack & Bolio's • Mimi's • Mario Bedescu

### TRANSPORTATION



### JAMES FAMULARO

President

646.658.7373

jfamularo@meridiancapital.com

### COLE KLEPPINGER

Senior Associate

212.468.5993

ckleppinger@meridiancapital.com



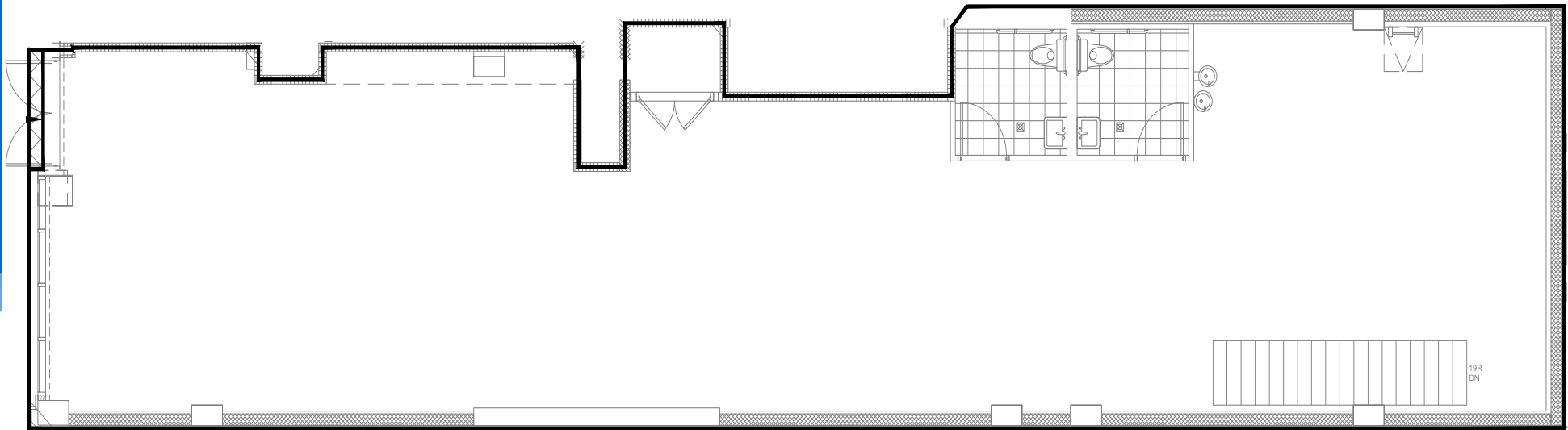
**MERIDIAN**  
RETAIL LEASING

All information supplied is from sources deemed reliable and is furnished subject to errors, omissions, modifications, removal of the listing from sale or lease, and to any listing conditions, including the rates and manner of payment of commissions for particular offerings imposed by Meridian Capital Group. This information may include estimates and projections prepared by Meridian Capital Group with respect to future events, and these future events may or may not actually occur. Such estimates and projections reflect various assumptions concerning anticipated results. While Meridian Capital Group believes these assumptions are reasonable, there can be no assurance that any of these estimates and projections will be correct. Therefore, actual results may vary materially from these estimates and projections. Any square footage dimensions set forth are approximate.

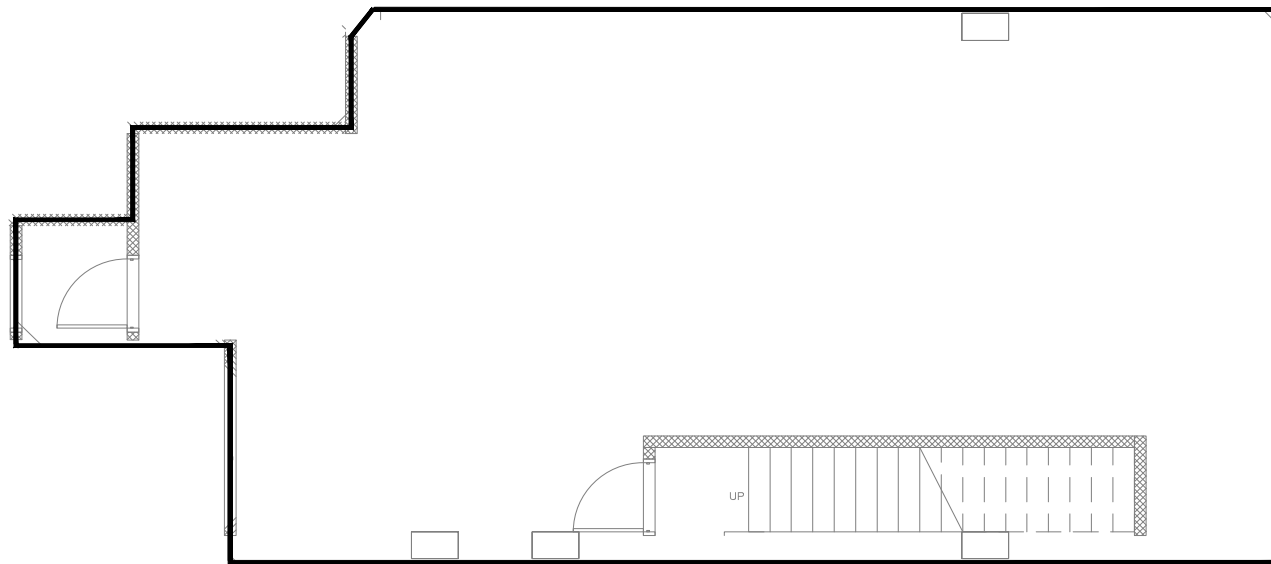
# 1009 SECOND AVENUE

MIDTOWN EAST, NYC | Between East 53<sup>rd</sup> and 54<sup>th</sup> Streets

RESTAURANT FOR LEASE



GROUND FLOOR



LOWER LEVEL

FLOOR PLANS

## JAMES FAMULARO

President  
646.658.7373  
jfamularo@meridiancapital.com

## COLE KLEPPINGER

Senior Associate  
212.468.5993  
ckleppinger@meridiancapital.com



**MERIDIAN**  
RETAIL LEASING

All information supplied is from sources deemed reliable and is furnished subject to errors, omissions, modifications, removal of the listing from sale or lease, and to any listing conditions, including the rates and manner of payment of commissions for particular offerings imposed by Meridian Capital Group. This information may include estimates and projections prepared by Meridian Capital Group with respect to future events, and these future events may or may not actually occur. Such estimates and projections reflect various assumptions concerning anticipated results. While Meridian Capital Group believes these assumptions are reasonable, there can be no assurance that any of these estimates and projections will be correct. Therefore, actual results may vary materially from these estimates and projections. Any square footage dimensions set forth are approximate.

1009 SECOND AVENUE  
MIDTOWN EAST, NYC | Between East 53<sup>rd</sup> and 54<sup>th</sup> Streets

RESTAURANT FOR LEASE



NEIGHBORS

**Streets:** E 54TH STREET, E 53RD STREET, E 52ND STREET, E 51ST STREET, THIRD AVENUE, SECOND AVENUE, FIRST AVENUE

**Businesses and Organizations:** UNITED STATES POSTAL SERVICE, pinkberry, LEN WICH, Marina PIZZA, blink, MAT CHA FUL, earthbar, EQUINOX FITNESS CLUBS, The GREATS of CRAFT CRAFT BEER | COPPER | WINE | SPIRITS, Tal Bagels, MATTO, Starbucks, Tomi Jazz News, MÅLÅ PROJECT, Emack & Bolie, Animò!, Maison Beljanski, yoro, FLOWERS ON FIRST, MADISON RESTAURANT, The Kati Roll Company, STRANGELOVE, Mimi's, DNY SALON HAIR - NAIL - WAXING, ATTO SUSHI, OBAO Noodles & BBQ, LUCKY CAT, MADAM MIKETTE'S, petco, Tenzan, Sweet Annie's Bar & Eatery, MIMI'S, Gyoza Bar, ramen & Gyoza Bar, 8 Kealoha Sushi & Poke Bowl, SUBWAY, SUTTONS & ROBERTSONS, Cello, TACOVISION, Al Barba MEDITERRANEAN CUISINE, RAKU, Frida, TOTTO RAMEN, Lemon Chicken, Green Gourmet & Juicy Bar, MARIO BADESCU SKIN CARE, Philly Fresh Cheesesteaks, Aichi Sushi, DUANEreade™ by Walgreens, PANINI GRILL sandwich, Spicy Republic, ATOMIC WINGS, NUTS FACTORY, TURTLE BAY TAVERN, BUTTERCUP BAKE SHOP, CVS pharmacy, SUTTON PLACE SYNAGOGUE, THE SMITH RESTAURANT & BAR, LA PECORA BIANCA, Deux Amis, ethos, Fashion Spa Nail Art, SUSHI HAYASHI, copinette, CLINTON HALL, CORNERSTONE TAVERN, VIN SUR VINGT, HAVEN rooftop, THE STAG'S HEAD, SOCARAT, Panda Express, Ess-a-Bagel, 天才 TENSAI.

**JAMES FAMULARO**  
President  
646.658.7373  
jfamularo@meridiancapital.com

**COLE KLEPPINGER**  
Senior Associate  
212.468.5993  
ckleppinger@meridiancapital.com

All information supplied is from sources deemed reliable and is furnished subject to errors, omissions, modifications, removal of the listing from sale or lease, and to any listing conditions, including the rates and manner of payment of commissions for particular offerings imposed by Meridian Capital Group. This information may include estimates and projections prepared by Meridian Capital Group with respect to future events, and these future events may or may not actually occur. Such estimates and projections reflect various assumptions concerning anticipated results. While Meridian Capital Group believes these assumptions are reasonable, there can be no assurance that any of these estimates and projections will be correct. Therefore, actual results may vary materially from these estimates and projections. Any square footage dimensions set forth are approximate.