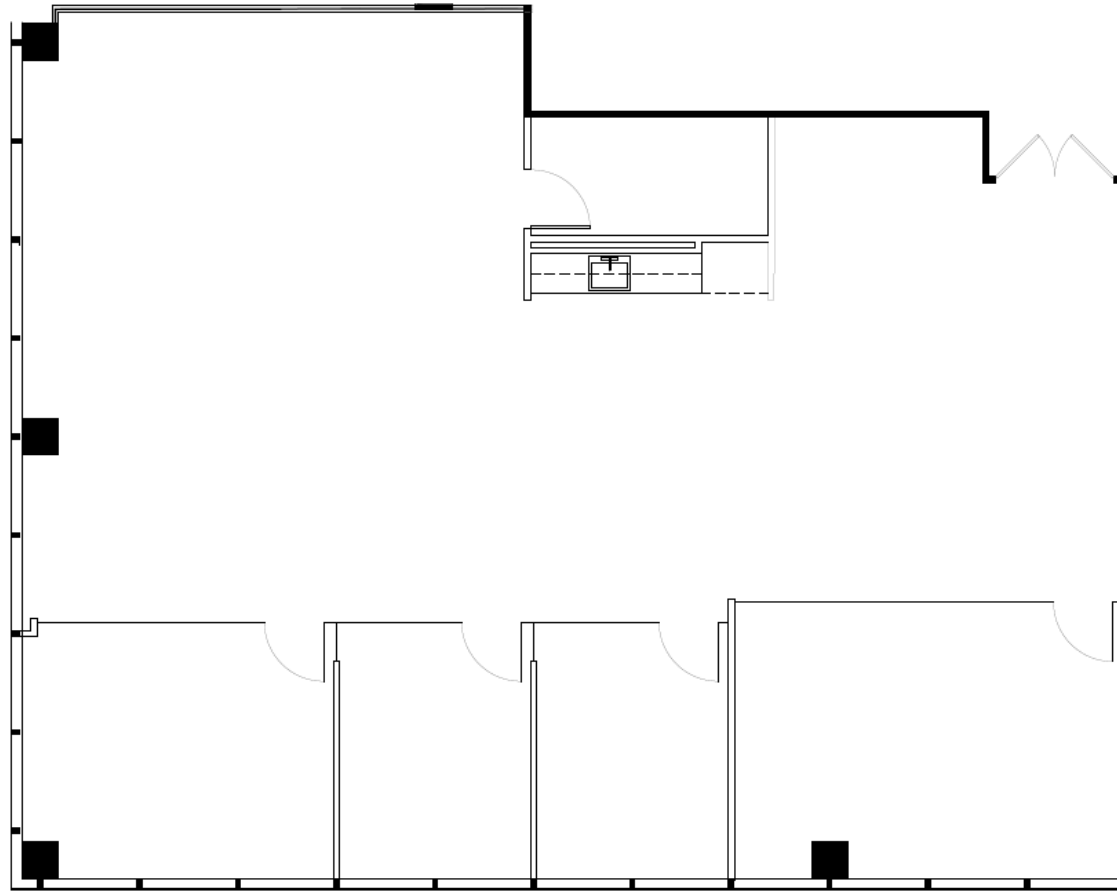


400 N CONTINENTAL BLVD

SUITE 410 | 2,816 RSF



FLOOR LOCATION PLAN



STEVE SOLOMON
Senior Executive Vice President
+ 1 310 321 1880
steve.solomon@colliers.com
Lic. 00956150

KRISTEN BOWMAN
First Vice President
+ 1 310 321 1819
kristen.bowman@colliers.com
Lic. 01951586