



2450 CRYSTAL DRIVE

AN OFFICE EXPERIENCE THAT TOTALLY HITS THE MARK

2450 Crystal Drive / 2461 S Clark Street
Arlington, VA 22202

Gary Cook / gcook@lpc.com / 703.284.3379

Stoddie Nibley / snibley@lpc.com / 703.284.5884

Ashley Superville / asuperville@lpc.com / 703.284.3628



[CRYSTALANDCLARK.COM](https://www.crystalandclark.com)



[VIEW VIDEO](#)



MRP | REALTY

Lincoln



Introducing 2450 Crystal and 2461 S Clark

Fully connected, and at the absolute center of National Landing, are two transformed office buildings that provide access, proximity, and convenience to every workday. Modern, dynamic spaces. Inspiring amenities. And an outdoor plaza full of must haves. **Experience it all at the center of it all.**

EXPERIENCE IT ALL
AT THE CENTER OF IT ALL

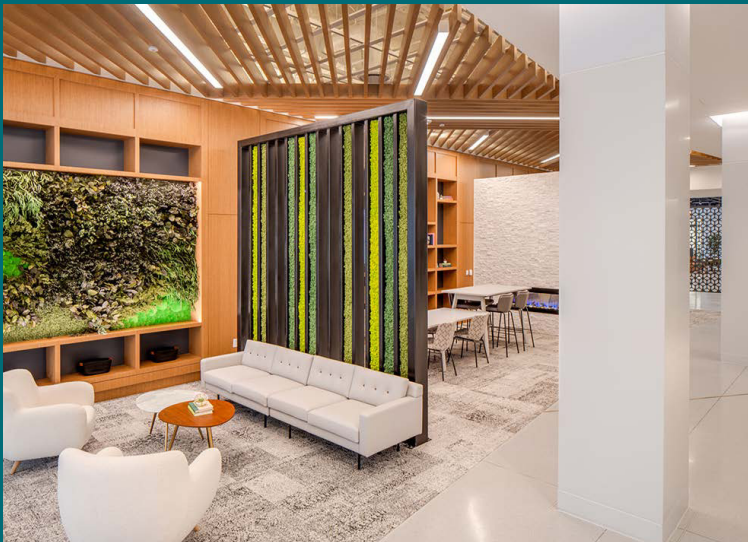


UPSCALE FEATURES & AMENITIES

- Impressive new plaza entrance and 2nd-floor outdoor courtyard with open-air conference tables and seating
- Immediate access to on-site retailers: Panera, Mezeh, Subway, New Yorker Grill & Navy Federal Credit Union
- Ready to move-in spec suites and customizable full floors
- Spectacular Townhall with amenity space
- Fresh, biophilic design—bringing outdoor elements inside
- New club-quality fitness center with locker rooms and towel service
- Renovated meeting rooms, plus new 200+ person conference center
- Secure indoor bicycle storage
- 2025 WELL Health-Safety Rated

A SOUGHT-AFTER CENTRAL LOCATION

- Convenient Metro access and immediate access to Reagan Washington National Airport
- Central to Amazon HQ2 and Virginia Tech innovation campus
- Five-minute walk to National Landing attractions in the north end
- Quickly connect with downtown DC government agencies, plus The Pentagon
- Street-level retail, dining, and lifestyle services





12	LEASED			
11	LEASED			
10	LEASED		LEASED	
9	SUITE 920 3,683 SF	SUITE 940 5,266 SF	SUITE 960 6,607 SF	SUITE 915 11,464 SF
8	8TH FLOOR 27,023 SF			
7	7TH FLOOR 27,023 SF			
6	LEASED			
5	5TH FLOOR 27,023 SF			
4	4TH FLOOR 27,023 SF			
3	3RD FLOOR 27,023 SF			
2	LEASED			
1	BUILDING & CONFERENCE AMENITY AREA		RETAIL	

Gary Cook **Stoddie Nibley** **Ashley Superville**
703.284.3379 703.284.5884 703.284.3628
gcook@lpc.com snibley@lpc.com asuperville@lpc.com

Lincoln



CRYSTAL & CLARK

2450 Crystal Drive, Arlington, VA

Fitness & Conference



Gary Cook

703.284.3379
gcook@lpc.com

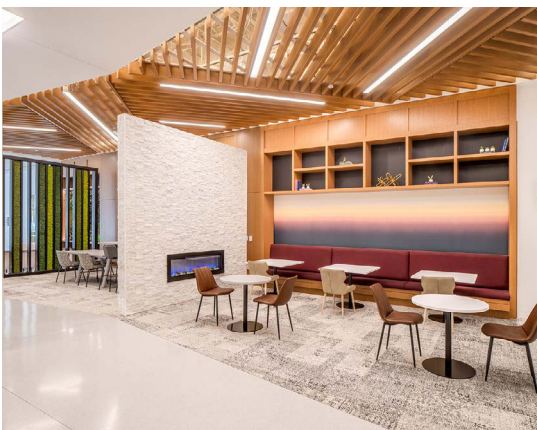
Stoddie Nibley

703.284.5884
snibley@lpc.com

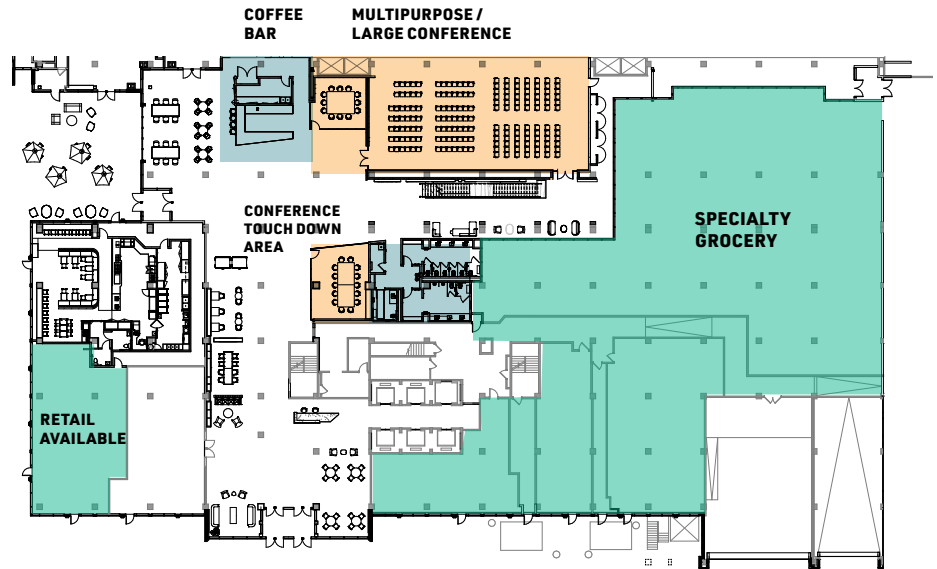
Ashley Superville

703.284.3628
asuperville@lpc.com

Lincoln



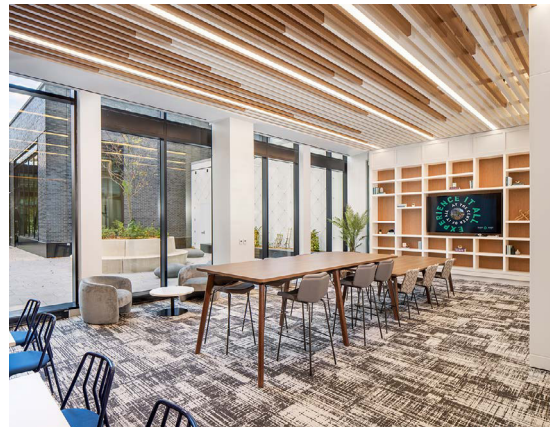
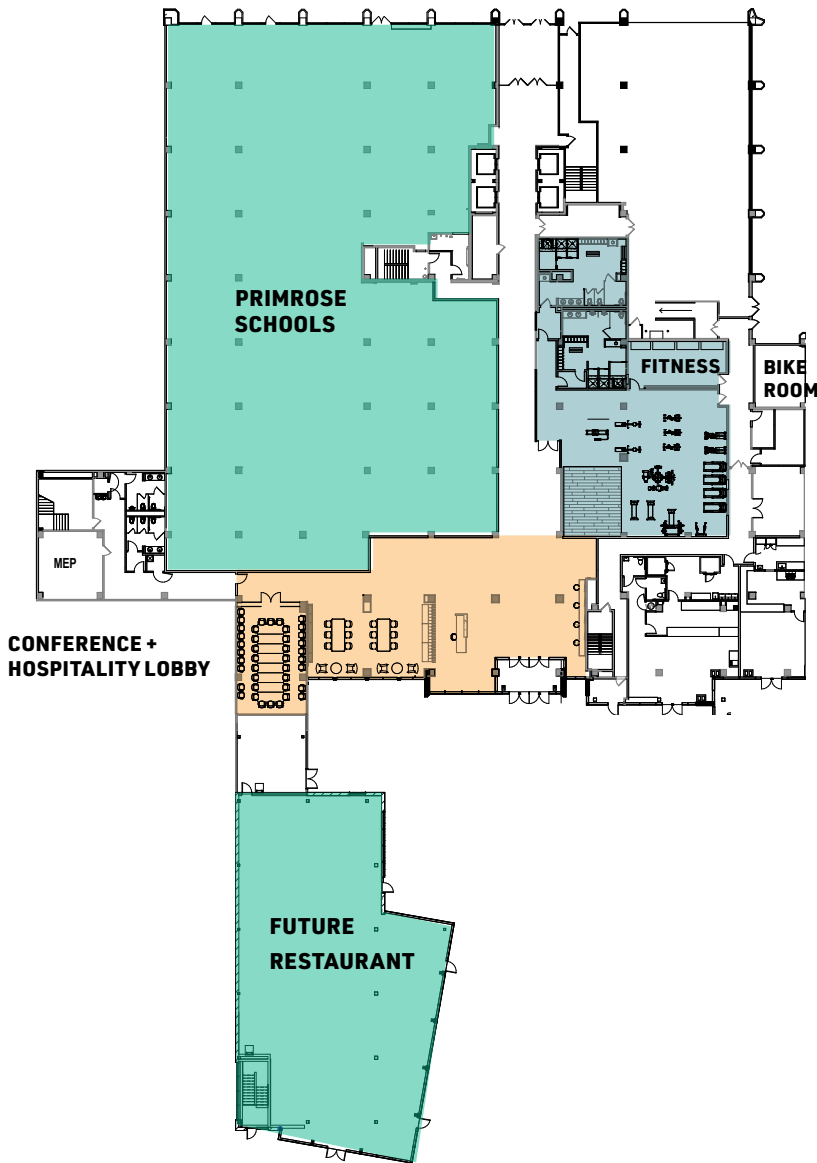
2450 CRYSTAL



Gary Cook	Stoddie Nibley	Ashley Superville
703.284.3379	703.284.5884	703.284.3628
gcook@lpc.com	snibley@lpc.com	asuperville@lpc.com

Lincoln

2461 S CLARK

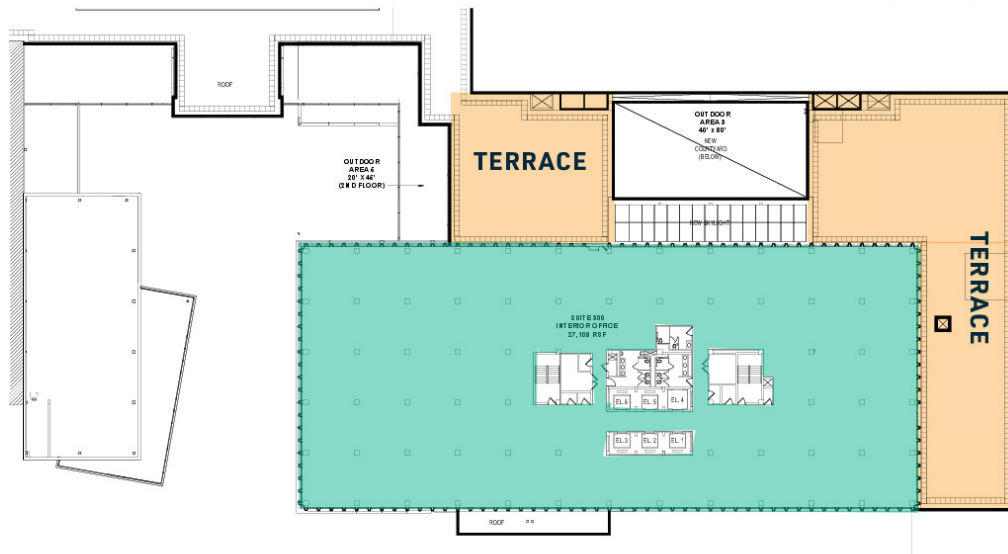


Gary Cook	Stoddie Nibley	Ashley Superville
703.284.3379	703.284.5884	703.284.3628
gcook@lpc.com	snibley@lpc.com	asuperville@lpc.com

Lincoln



OUTDOOR TERRACE



Suite	Size	Description
■ 3rd Floor	27,023 SF	Available Immediately

Gary Cook **Stoddie Nibley** **Ashley Superville**
 703.284.3379 703.284.5884 703.284.3628
 gcook@lpc.com snibley@lpc.com asuperville@lpc.com

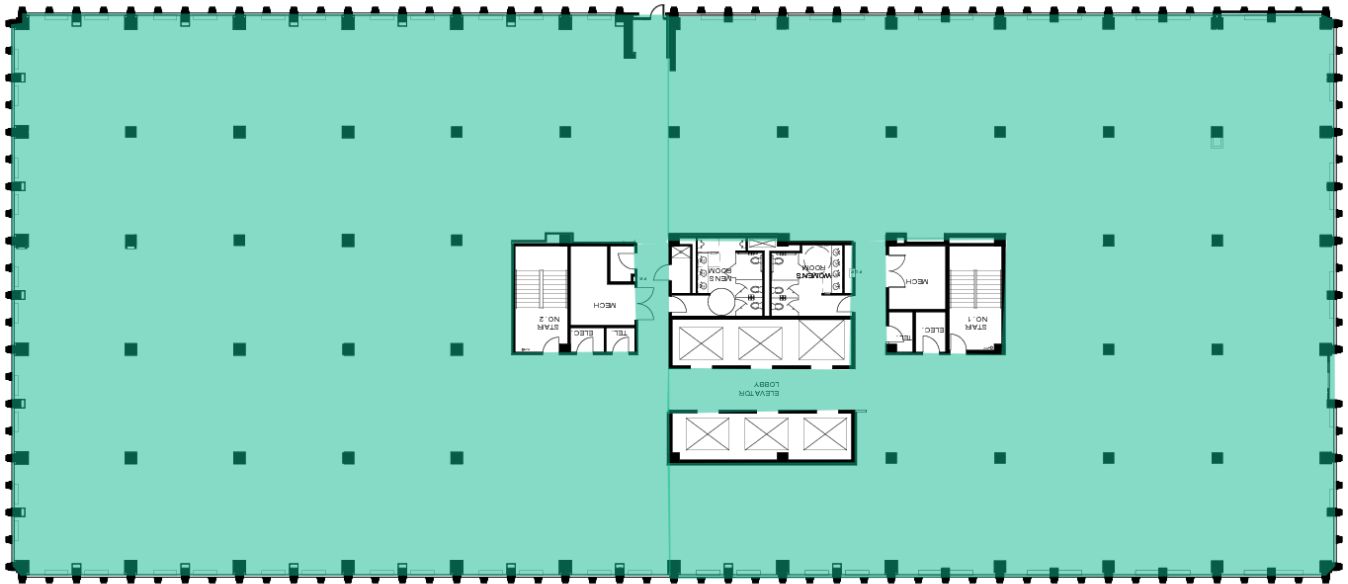




CRYSTAL & CLARK

2450 Crystal Drive, Arlington, VA

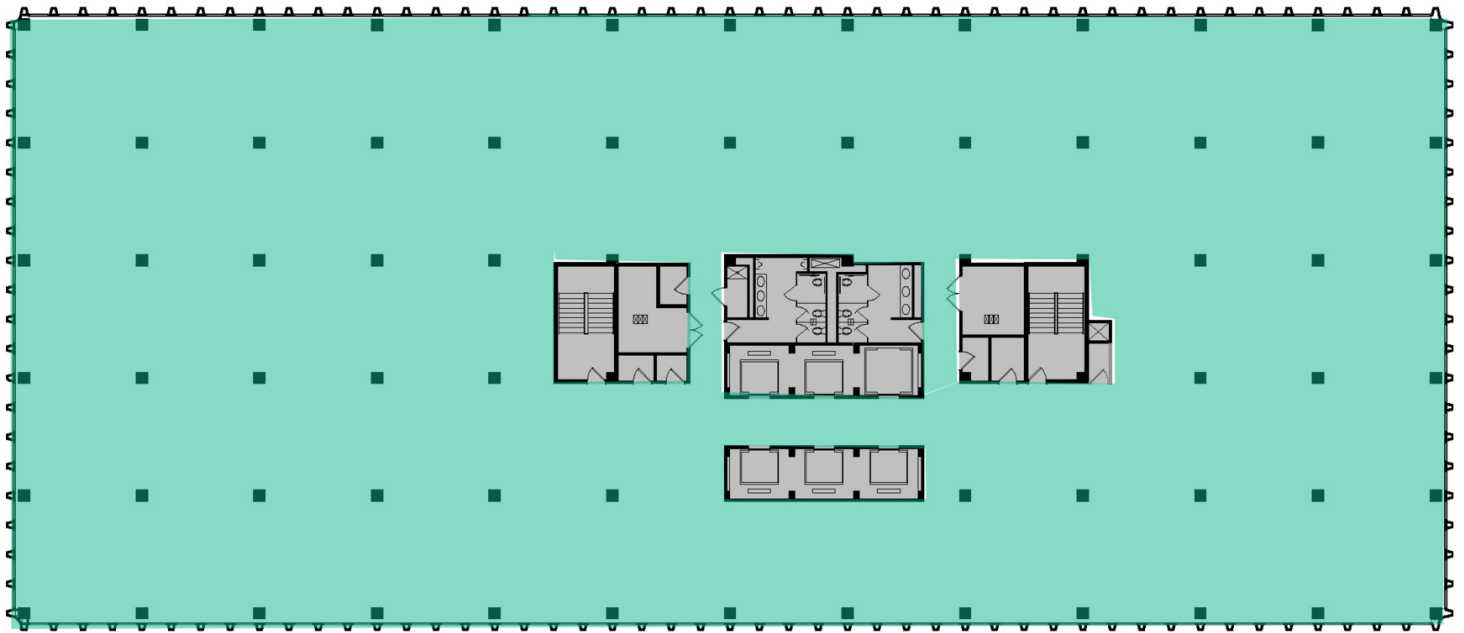
4th Floor
27,023 SF



Suite	Size	Description
■ 4th Floor	27,023 SF	Available Immediately

Gary Cook	Stoddie Nibley	Ashley Superville
703.284.3379	703.284.5884	703.284.3628
gcook@lpc.com	snibley@lpc.com	asuperville@lpc.com

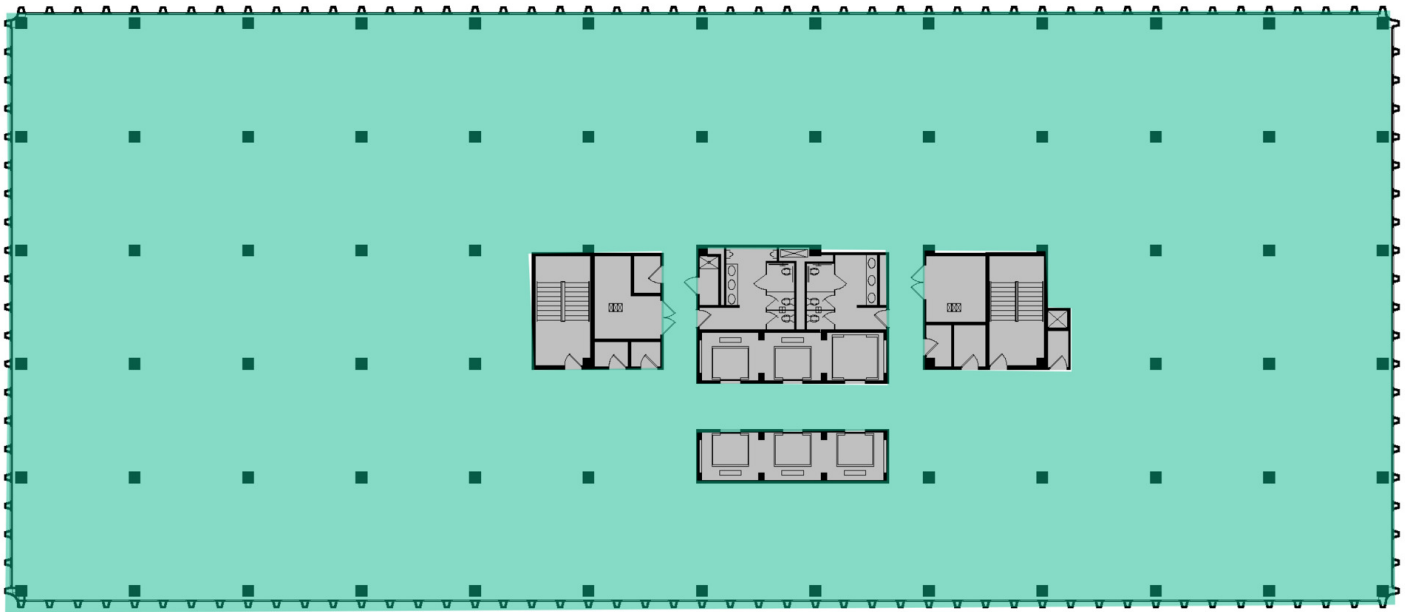
Lincoln



Suite	Size	Description
■ 5th Floor	27,023 SF	Available Immediately

Gary Cook **Stoddie Nibley** **Ashley Superville**
 703.284.3379 703.284.5884 703.284.3628
 gcook@lpc.com snibley@lpc.com asuperville@lpc.com

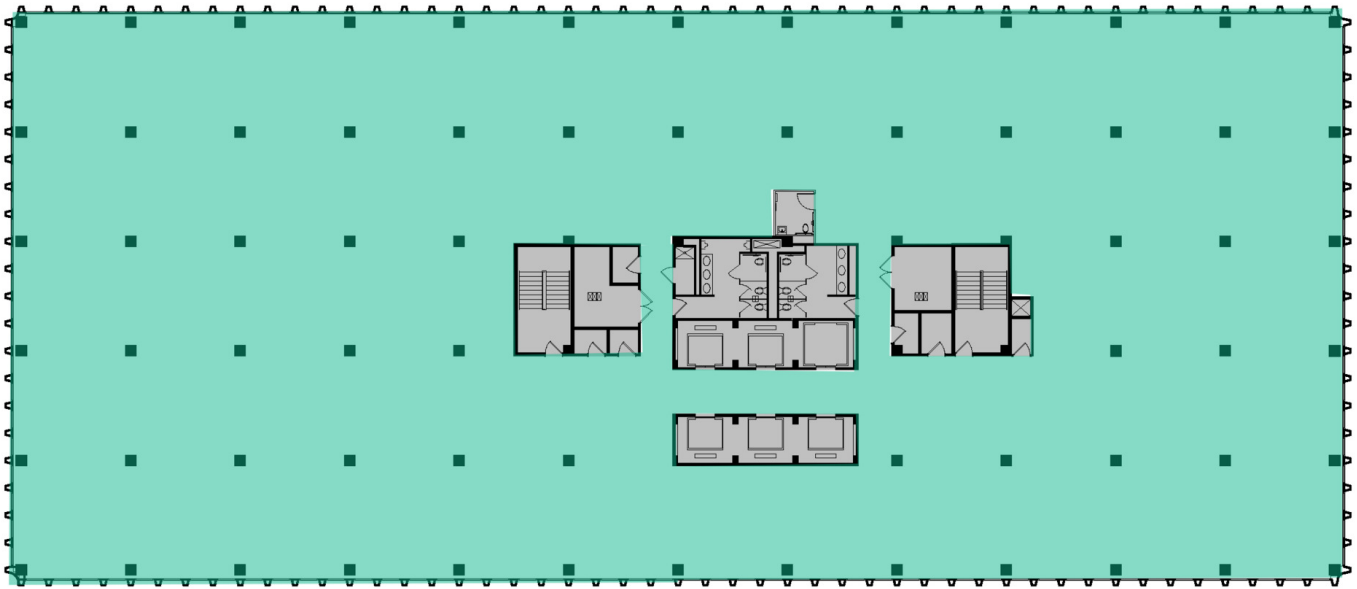




Suite	Size	Description
■ 7th Floor	27,023 SF	Available Immediately

Gary Cook **Stoddie Nibley** **Ashley Superville**
 703.284.3379 703.284.5884 703.284.3628
 gcook@lpc.com snibley@lpc.com asuperville@lpc.com

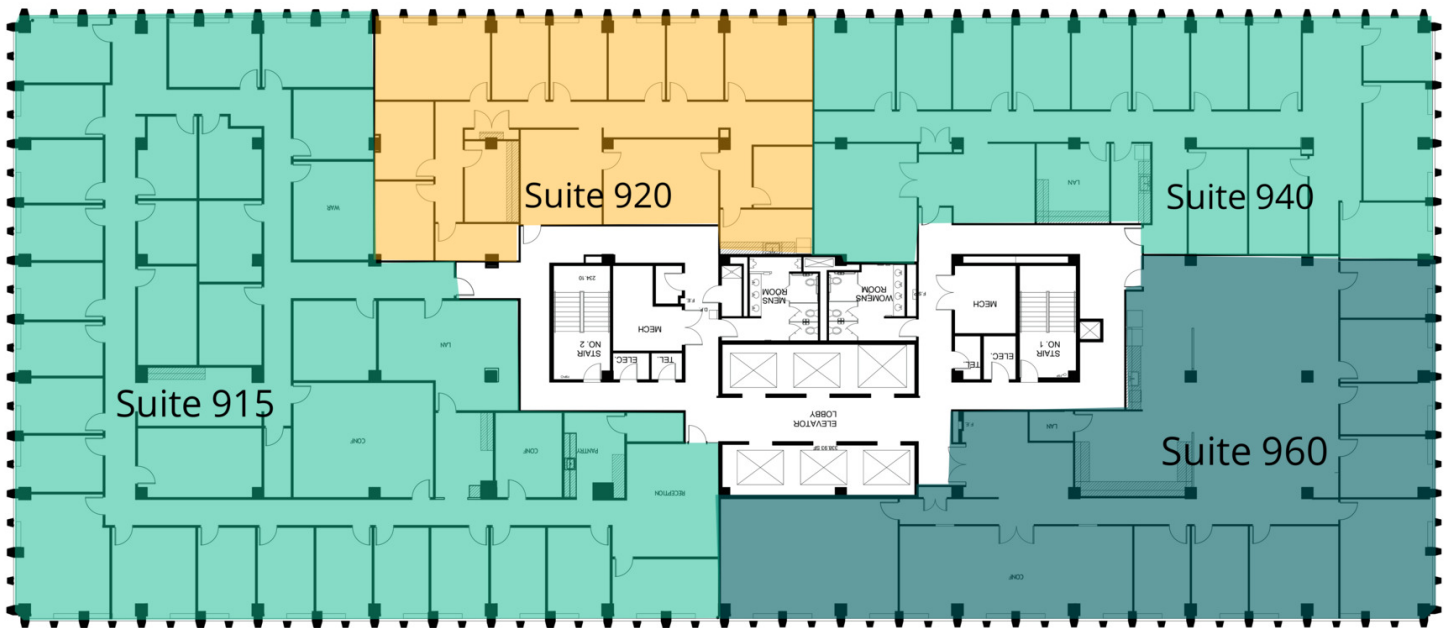




Suite	Size	Description
■ 8th Floor	27,023 SF	Available Immediately

Gary Cook **Stoddie Nibley** **Ashley Superville**
 703.284.3379 703.284.5884 703.284.3628
 gcook@lpc.com snibley@lpc.com asuperville@lpc.com

Lincoln



Suite	Size	Description
■ Suite 915	11,464 - 27,023 SF	Available immediately
■ Suite 920	3,683 - 27,023 SF	Available Immediately
■ Suite 940	5,266 - 27,023 SF	Available Immediately
■ Suite 960	6,607 - 27,023 SF	Available Immediately

Gary Cook **Stoddie Nibley** **Ashley Superville**
703.284.3379 703.284.5884 703.284.3628
gcook@lpc.com snibley@lpc.com asuperville@lpc.com

Lincoln



**2450 Crystal Drive / 2461 S Clark Street
Arlington, VA 22202**

For Leasing Information Contact:

Gary Cook

gcook@lpc.com

703.284.3379

Stoddie Nibley

snibley@lpc.com

703.284.5884

Ashley Superville

asuperville@lpc.com

703.284.3628

CRYSTALANDCLARK.COM

