

WHITESTONE

LOGISTICS CENTER

28-10 WHITESTONE EXPRESSWAY, QUEENS, NEW YORK 11356



CLASS A NEW CONSTRUCTION

313,496 SF
FOR LEASE



SPACE FEATURES

WHITESTONE
LOGISTICS CENTER



SQUARE FOOTAGE

80,612 SF Warehouse (Ground Floor)
164,725 SF Structured Parking (Levels 2-3)
68,159 SF Exterior/Truck Court



CLEAR HEIGHT

36' Warehouse
11' 2" Parking



LOADING CAPACITY

13 Loading Docks
3 Drive-In Doors



POWER

3000 Amps
120/208V Service



ICAP TAX ABATEMENT

SITE PLAN



SCHEMATIC UNIT A
Warehouse: 38,975 SF
Parking/Truck Court: 29,633 SF
Loading Docks: 7
Drive-In Door: 1 Double Wide

SCHEMATIC UNIT B
Warehouse: 41,637 SF
Parking/Truck Court: 27,158 SF
Loading Docks: 6
Drive-in Doors: 2



4 Access Points



Loading On 2 Sides



800 PSF Floor Loads



Direct Access To Whitestone Expy Frontage Road

STATE OF THE ART INDUSTRIAL WAREHOUSE

WITH INTEGRATED PARKING



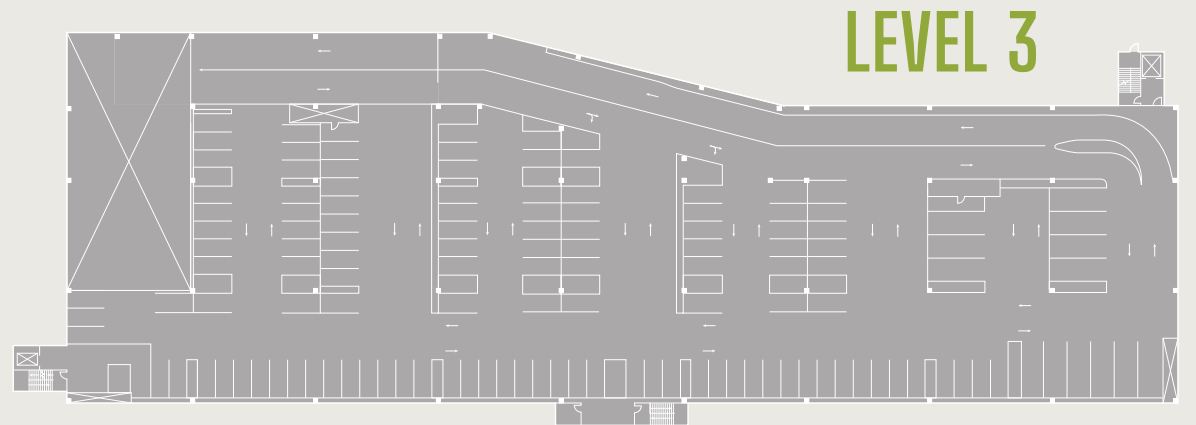
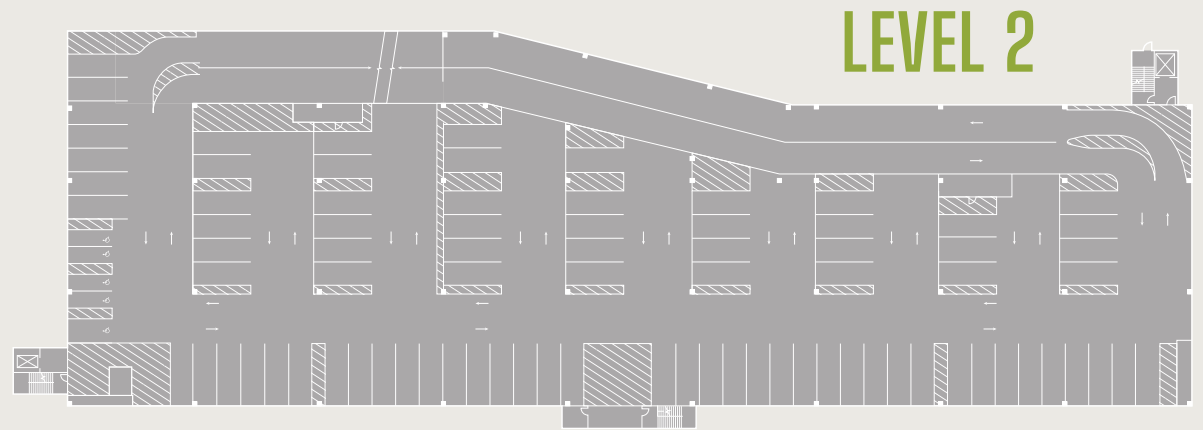
164,725 SF parking garage
can be leased alone
Building in a building opportunity



Double-wide ramp



Fully secured & vented



DRIVE TIMES & DEMOGRAPHICS



DRIVE TIMES

30 MINUTES

60 MINUTES



POPULATION

6,728,914

15,705,421



AVG HH INCOME

\$119,982

\$138,440



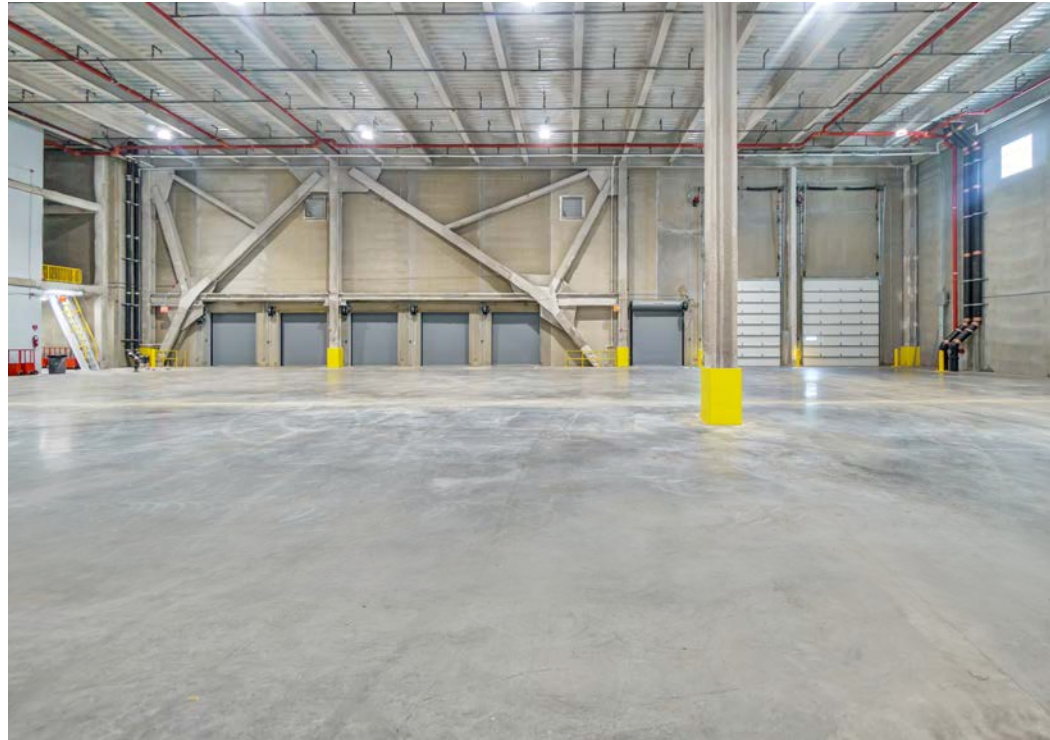
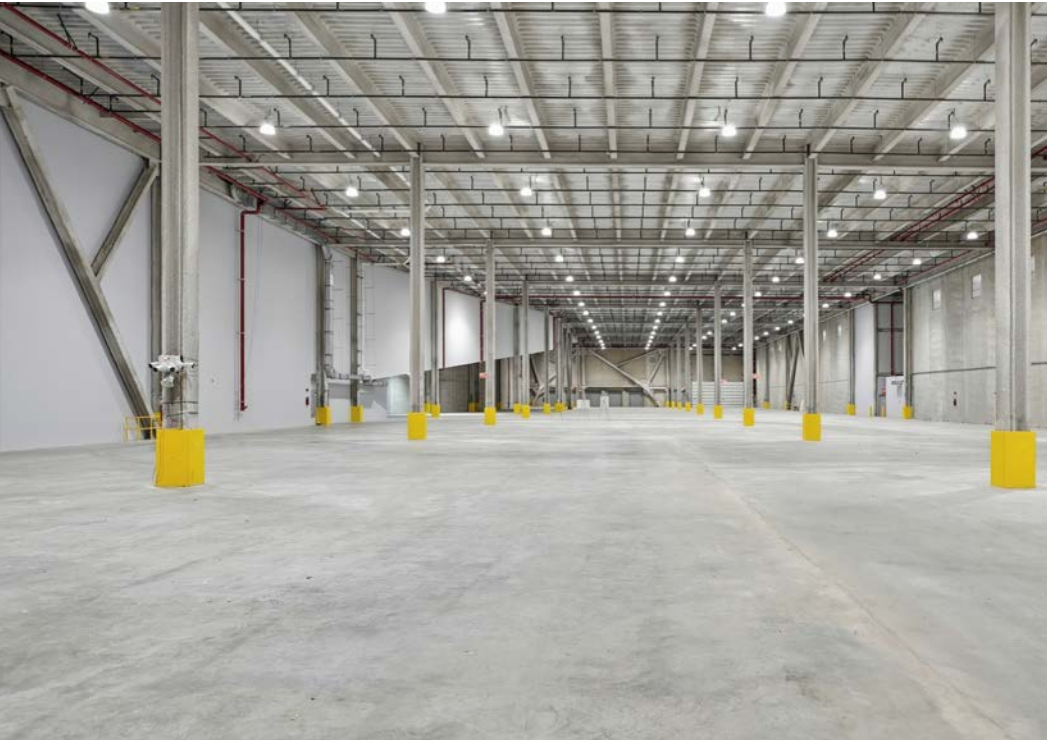
REACH OVER 15 MILLION
CONSUMERS IN A ONE HOUR DRIVE TIME

DRIVE DISTANCES

I-678	0.7 MILES
WHITESTONE BRIDGE	2.9 MILES
I-495	3.0 MILES
LGA	3.8 MILES
THROGS NECK BRIDGE	5.4 MILES
I-278	5.4 MILES
RFK BRIDGE	6.7 MILES
GOLD COAST, LONG ISLAND	8.8 MILES
QUEENSBORO BRIDGE	9.0 MILES
JFK	10.8 MILES

WHITESTONE

LOGISTICS CENTER





HELEN PAUL

+1 212 841 7575

helen.paul@cushwake.com

RICO MURTHA

+1 212 390 1368

rico.murtha@cushwake.com

SONNY SINGH

+1 718 275 5478

sonny.singh@cushwake.com

DAN DONAHUE

+1 212 713 6864

dan.donahue@cushwake.com

