

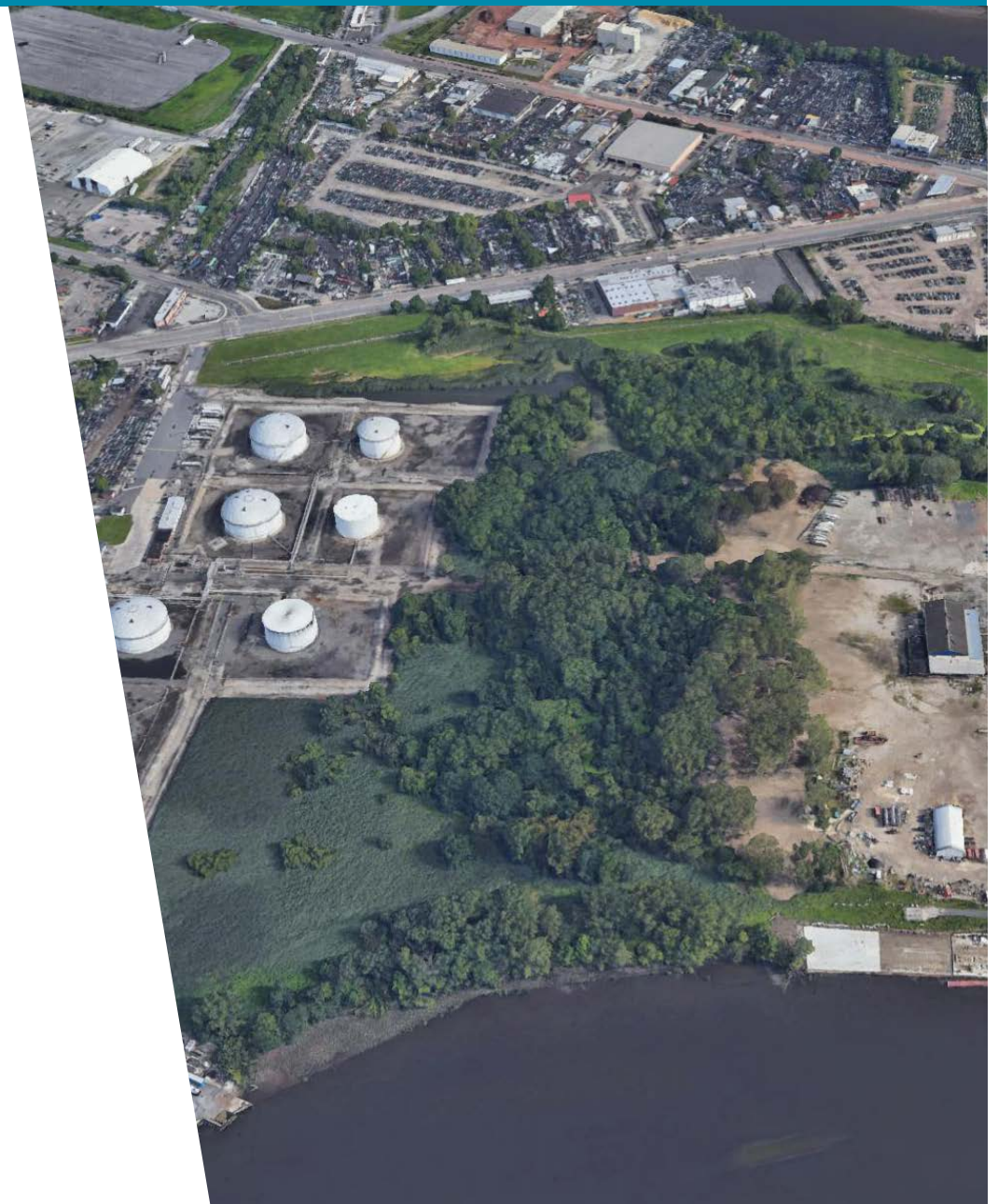
6310-18 W PASSYUNK AVE/3212 S 67TH STREET
PHILADELPHIA, PA

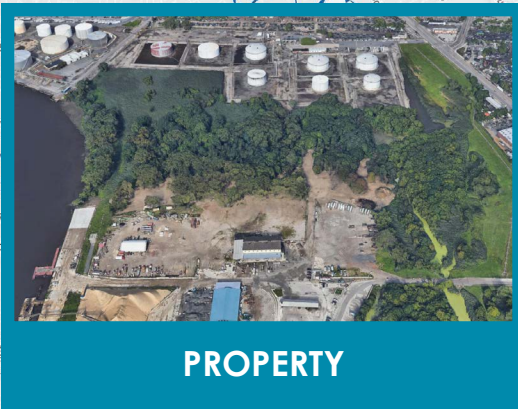
AVAILABLE FOR LEASE
INDUSTRIAL BUILDING

11,000 SF
41.31 Acres

PROPERTY HIGHLIGHTS

- **BUILDING SF:**
11,000 SF Available
- **ACREAGE:**
41.31 acres
- **LOADING:**
Three (3) drive-ins
One (1) loading dock
- **CEILING HEIGHTS:**
22' clear
- **ZONING:**
I-3 – Heavy Industrial (City of Philadelphia)
- **ADDITIONAL FEATURES:**
Barge Access





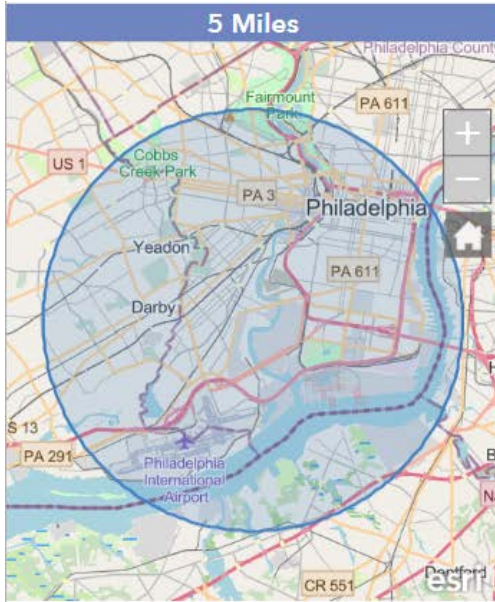
PROPERTY

LOCATION

Located in Southwest Philadelphia, this property provides easy access to I-95, I-76, the Philadelphia International Airport, and The Navy Yard.

6310-18 W Passyunk Ave / 3212 S 67th Street, Philadelphia, PA

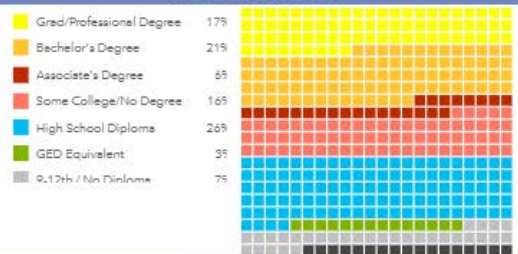
DEMOGRAPHICS



POPULATION



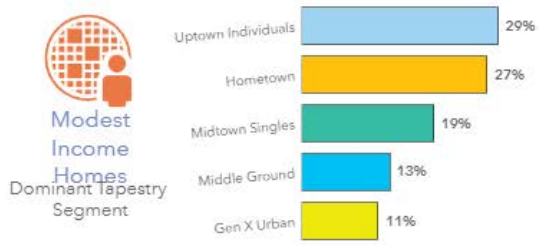
EDUCATION



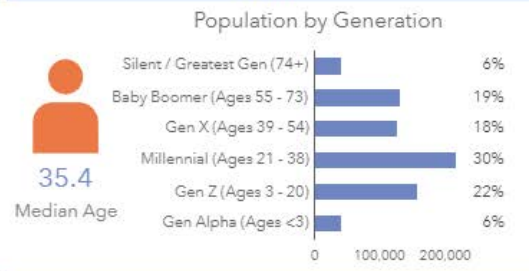
HOUSING



LIFESTYLES



AGE



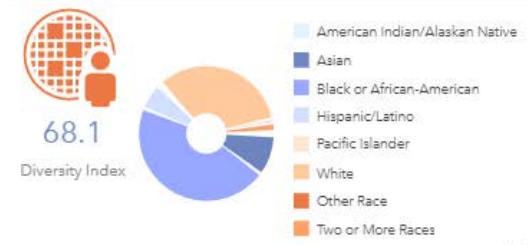
INCOME



EMPLOYMENT



DIVERSITY



v1.0

REGIONAL OVERVIEW

ABOUT THE REGION

Philadelphia is the sixth-largest city nationwide. Philadelphia encompasses 135.1 square miles at the confluence of the Delaware and Schuylkill Rivers and is located 100 miles south of New York and 110 miles north of Washington, D.C.

The Philadelphia Metropolitan Statistical Area (MSA) consists of the City of Philadelphia and the eight surrounding counties of Bucks, Chester, Delaware, and Montgomery in Pennsylvania and Burlington, Camden, and Gloucester Counties in New Jersey.

As an urban region, the Philadelphia Metropolitan Statistical Area has the nation's fourth-largest GDP, at \$432 billion. It is also the third most populous downtown among all U.S. cities. As one of the most visited U.S. cities in the country - in 2019 a record 46 million people visited the seven-county region.

Home to world-renowned museums, parks and historic landmarks, and virtually unlimited theater, arts and entertainment options, there is no shortage of reasons why Philadelphia is thriving.



5,400,000

Philadelphia Region
Population



4th Largest

Metro GDP in the Nation



3rd Most

Populous Downtown



CONTACT



Chris Pennington
Partner & Senior Vice President
215.448.6053
cpennington@binswanger.com



Three Logan Square
1717 Arch Street, Suite 5100
Philadelphia, PA, 19103
Phone: 215.448.6000
binswanger.com

The information contained herein is from sources deemed reliable, but no warranty or representation is made as to the accuracy thereof and no liability may be imposed.