



491 - 571 BOUL LEBEAU SAINT-LAURENT (QUÉBEC)

Bureaux à louer situé au 491 - 571 boulevard Lebeau à Saint-Laurent. **L'entrée et tous les couloirs communs ont été entièrement rénovés en 2022.** Jusqu'à 8 495 pi. ca de disponibles dans cet espace industriel de situé à proximité de l'autoroute 15 et de la route Transcanadienne.

Office spaces for lease at 491 - 571 boulevard Lebeau in Saint-Laurent. **The entry way and all common corridors were fully renovated in 2022.** Up to 8,495 sq. ft. available in this industrial property located near Highway 15 and the Trans-Canada Highway.

ÉQUIPE DE LOCATION LEASING TEAM

T: +1 514 535 4444
leasing@brasswater.ca

245, avenue Victoria,
Suite 801
Westmount, Qc | H3Z 2M6
T: +1 514 535 4444
www.brasswater.ca



CARTE | MAP



54
121

Côte-Vertu

EDUCATION

48,825

POPULATION

98,828
80,737

TRANSPORT

DÉMOGRAPHIQUE | DEMOGRAPHIC

ACCÈS FACILE À L'AUTORO  ET/AND  EASY HIGHWAY ACCESS

SERVICES ET COMMODITÉS | SERVICES AND AMENITIES

BANQUES BANKS	RESTAURANTS	COMMERCE SHOPS	HOTELS
BANQUE NATIONALE RBC HSBC BMO	EGGSPECTION SHISH-KEBAB SAHTEIN BACARO A&W NOSTOS GRILLADES TORINO	PLAZA L'ACADIE MARCHÉ CENTRAL CENTRE ROCKLAND ZARA H&M IGA PLACE VERTU	HILTON RUBY DAYS INN RADISON



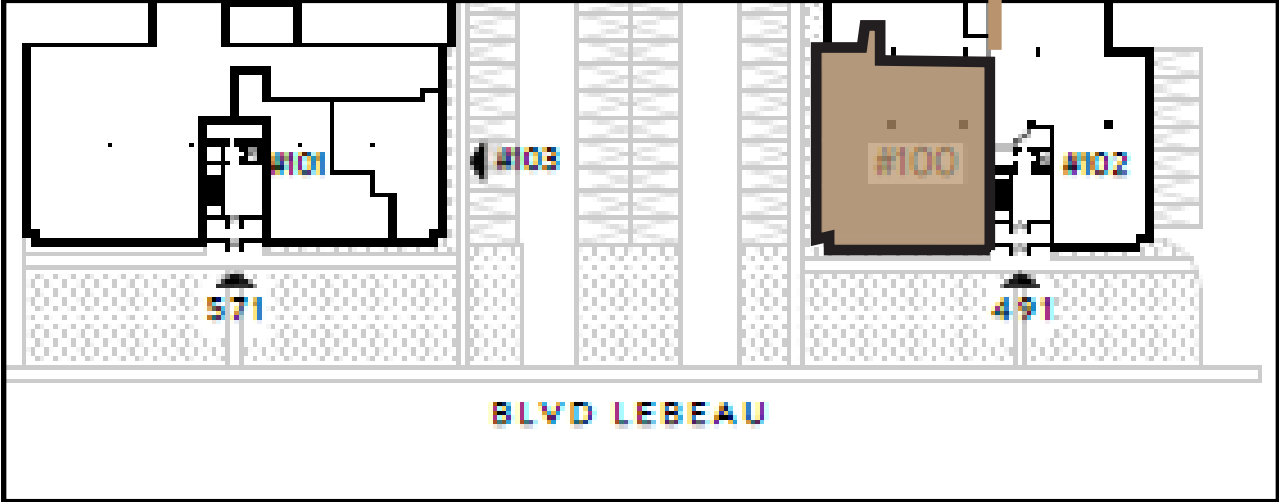
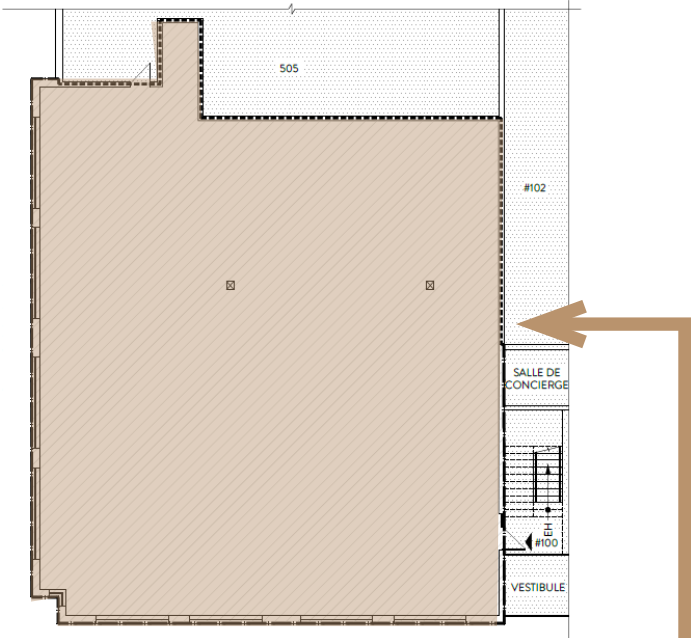
APPERÇU | OVERVIEW

ZONAGE / ZONE	BUREAU / OFFICE
SURFACE DISPONIBLE / AREA AVAILABLE	JUSQU'À / UP TO 8 495 PI ² / F ²
POPULATION	98 828
POPULATION DIPLÔMÉE DE L'UNIVERSITÉ / POPULATION WITH UNIVERSITY DEGREES	48 825
REVENU DU MÉNAGE / HOUSEHOLD INCOME	\$ 80,737



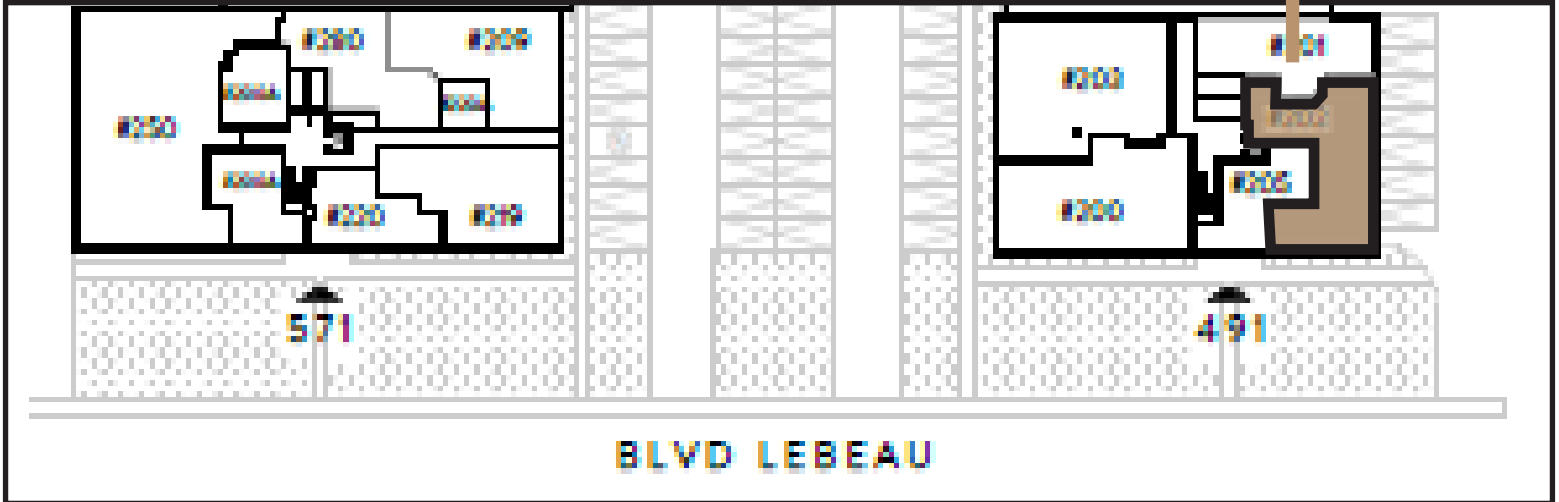
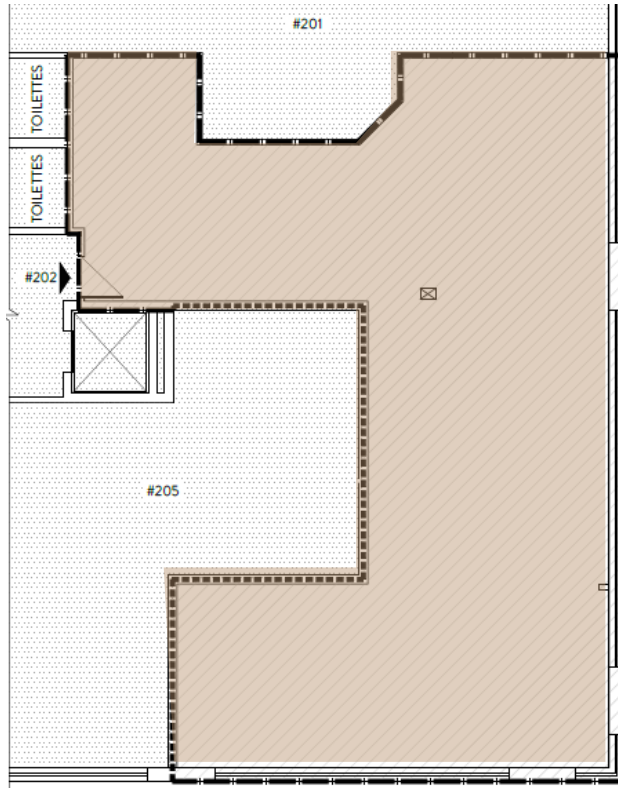
BRASSWATER

LES PLANS POUR / PLANS FOR 491 BOUL. LEBEAU



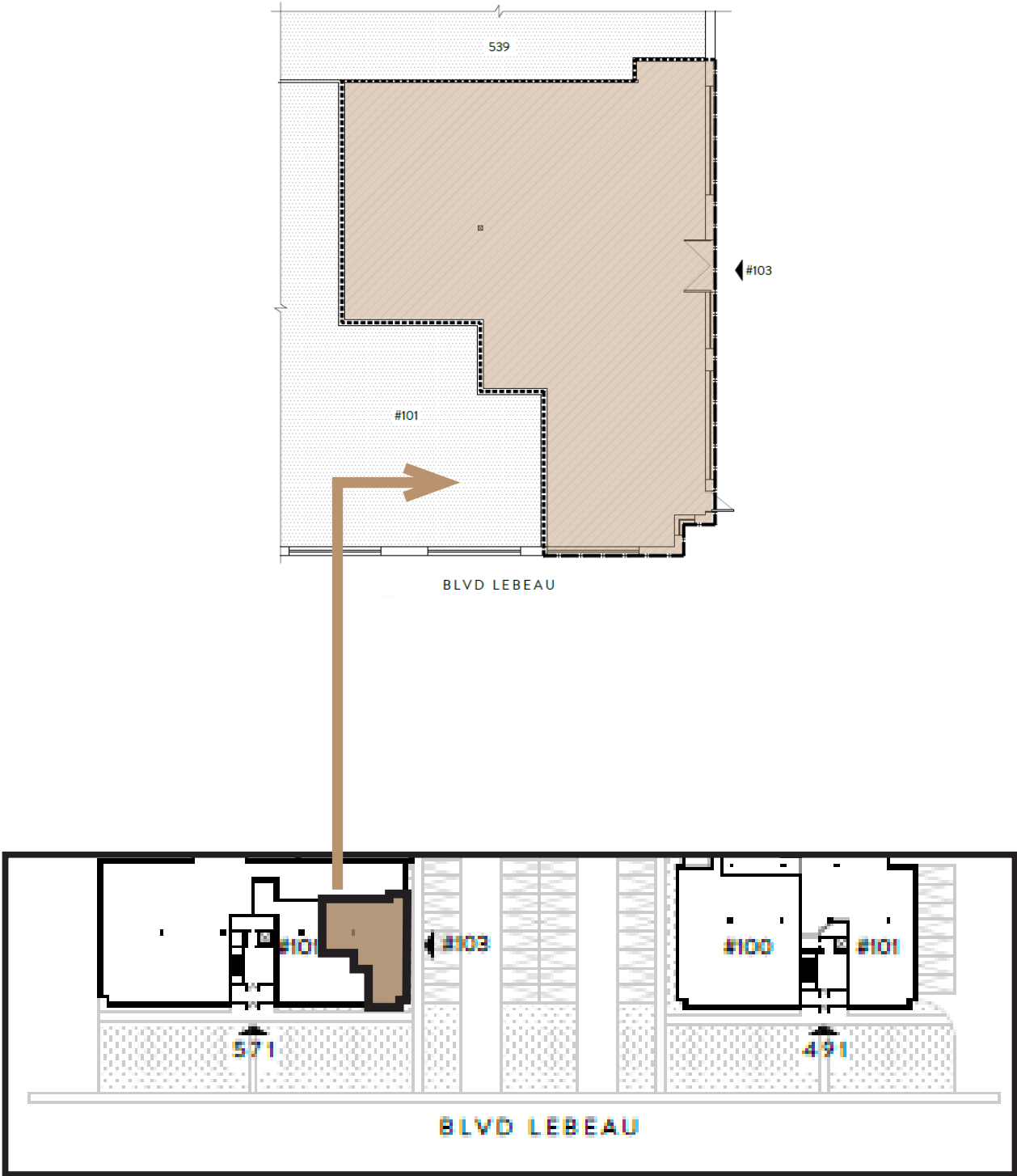
100	4 106 pc/sf
-----	-------------

LES PLANS POUR / PLANS FOR 491 BOUL. LEBEAU



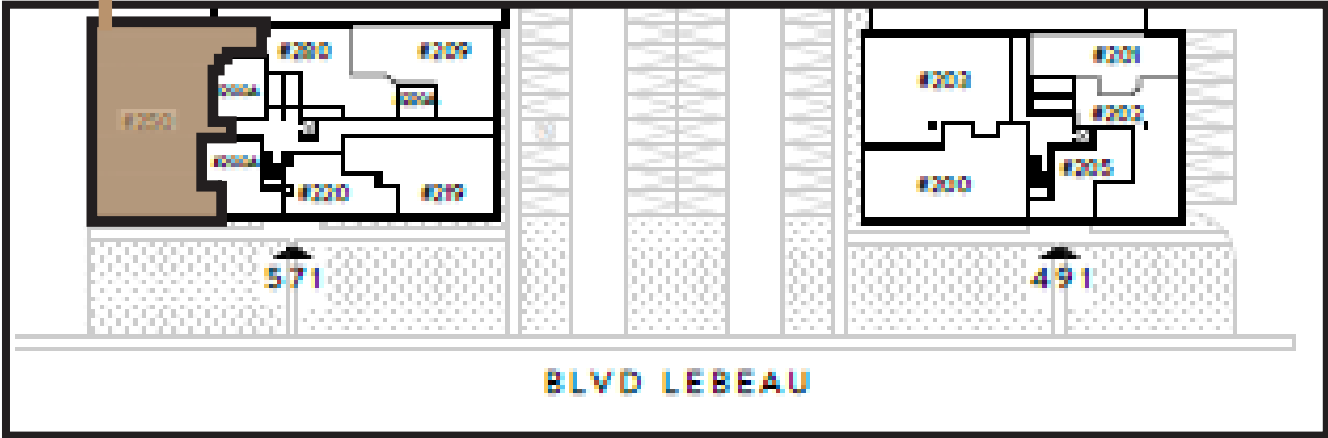
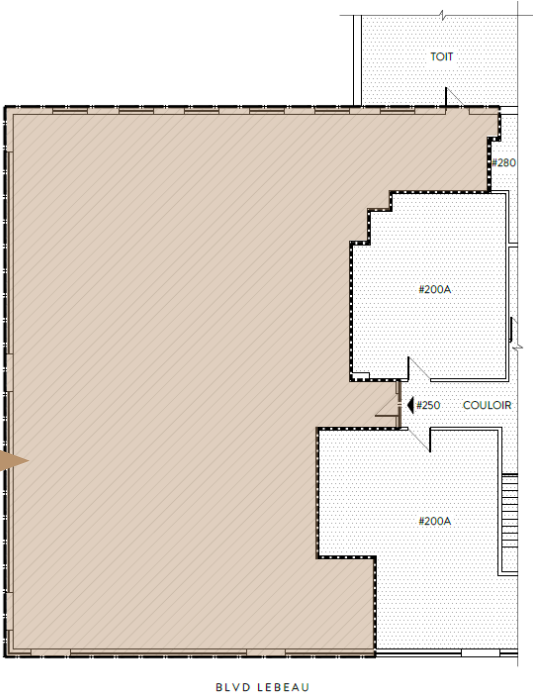
202	1 513 pc/sf
-----	-------------

LES PLANS POUR / PLANS FOR 571 BOUL. LEBEAU



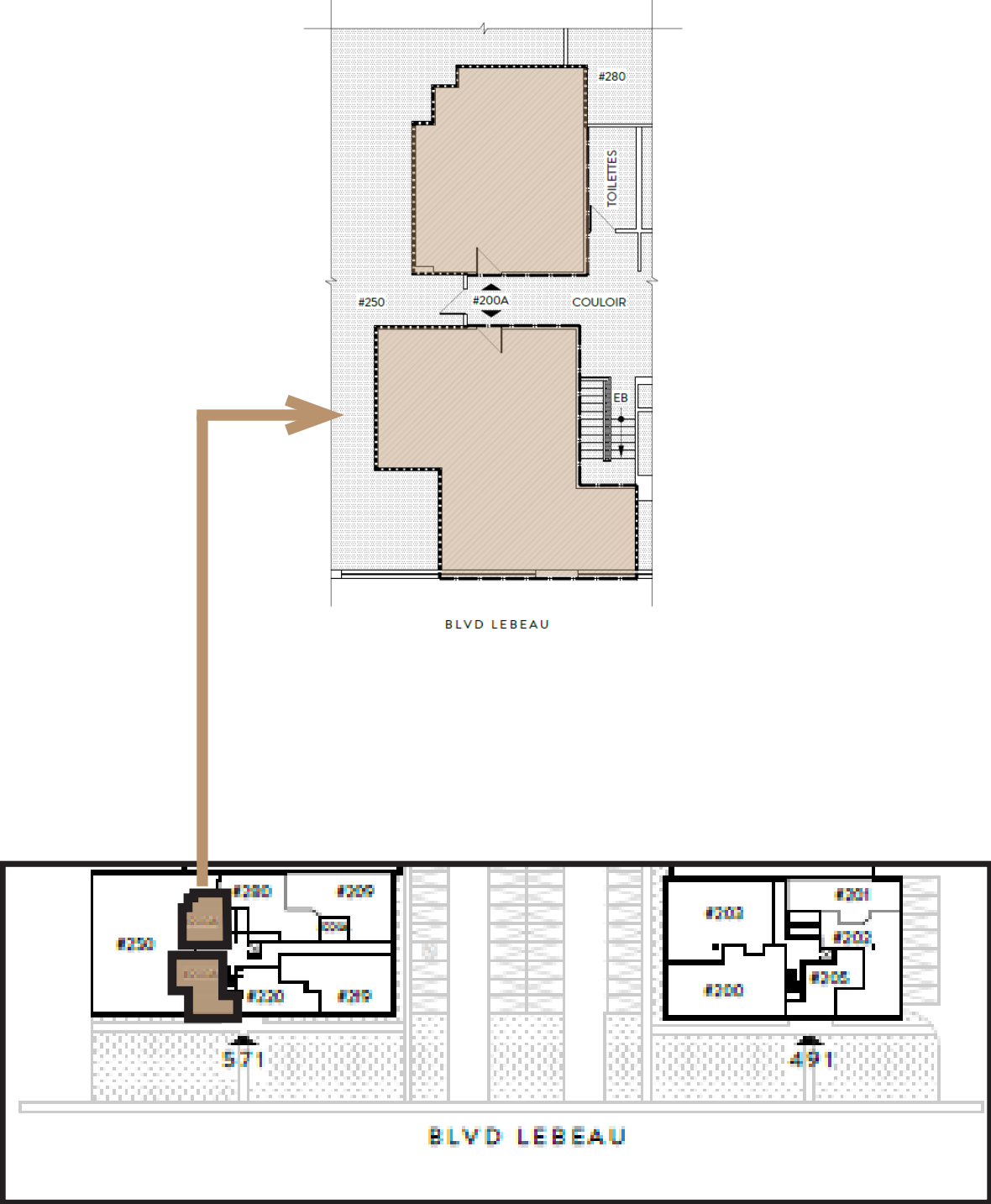
103	1 106 pc/sf
-----	-------------

LES PLANS POUR / PLANS FOR 571 BOUL. LEBEAU



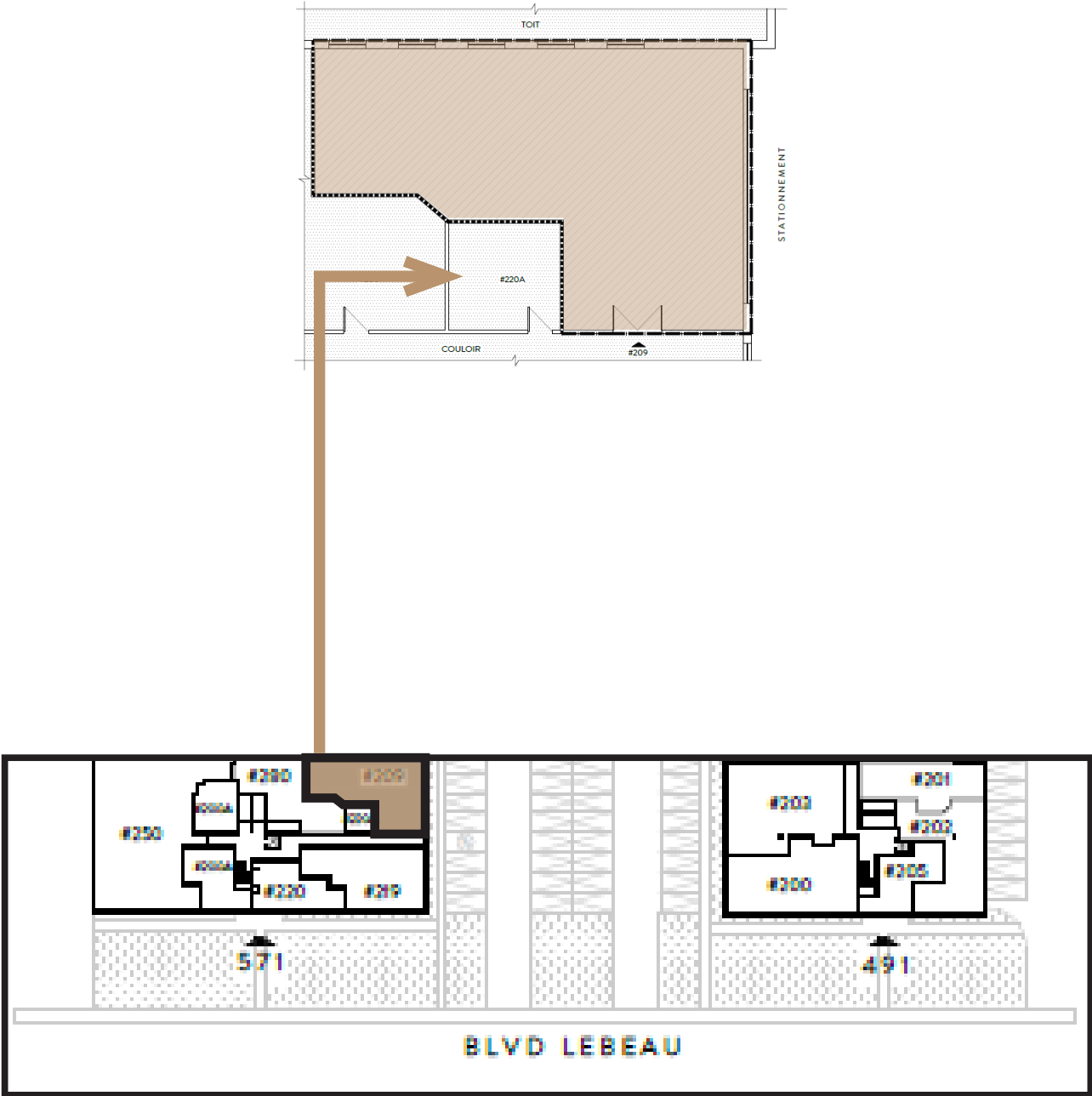
250	3 442 pc/sf
-----	-------------

LES PLANS POUR / PLANS FOR 571 BOUL. LEBEAU



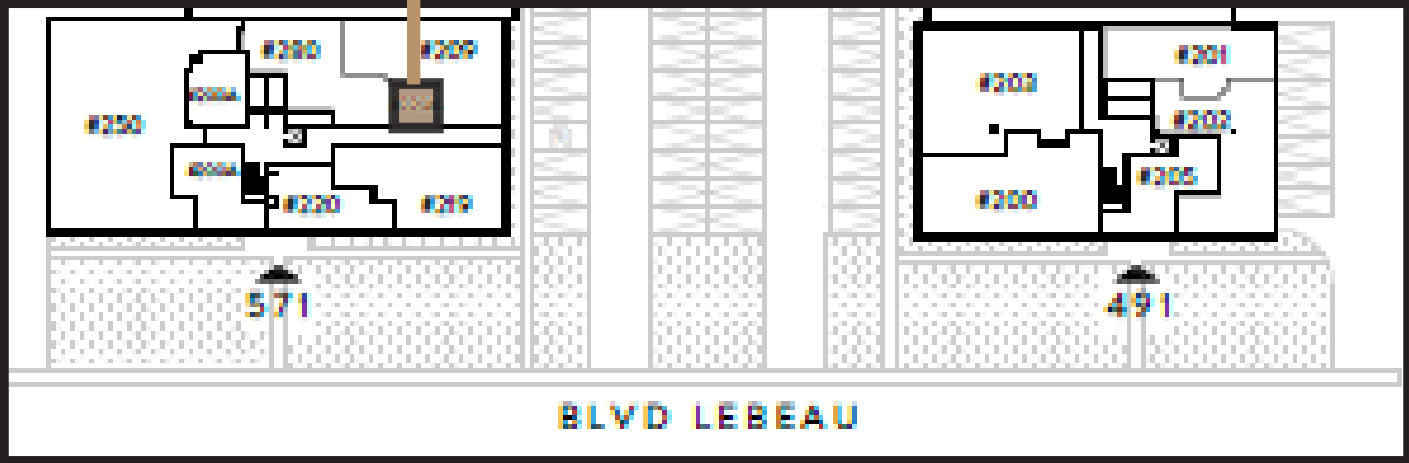
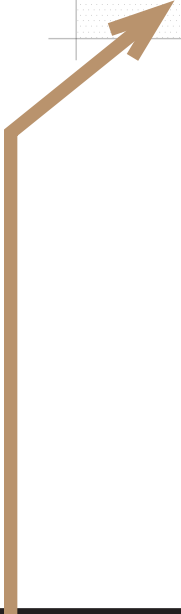
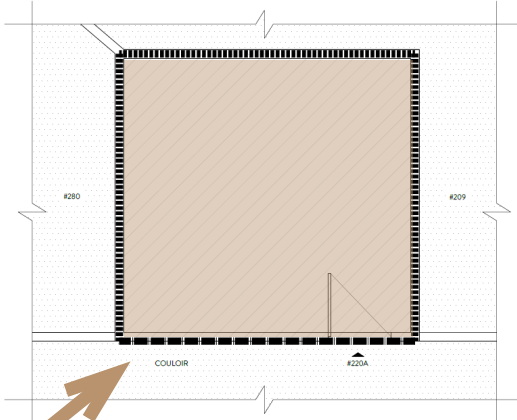
200A	1 168 pc/sf
-------------	-------------

LES PLANS POUR / PLANS FOR 571 BOUL. LEBEAU



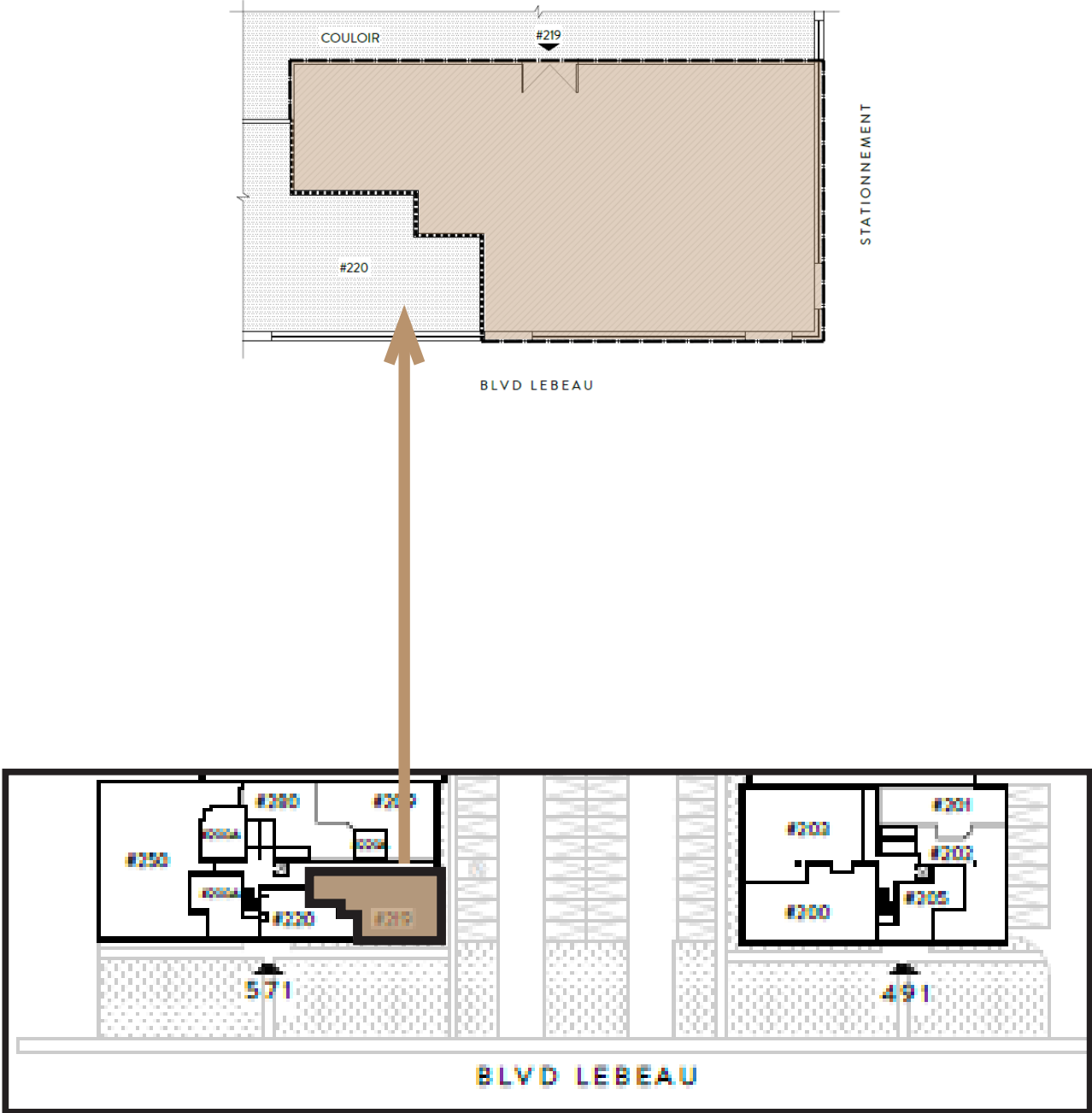
209	1 451 pc/sf
-----	-------------

LES PLANS POUR / PLANS FOR 571 BOUL. LEBEAU



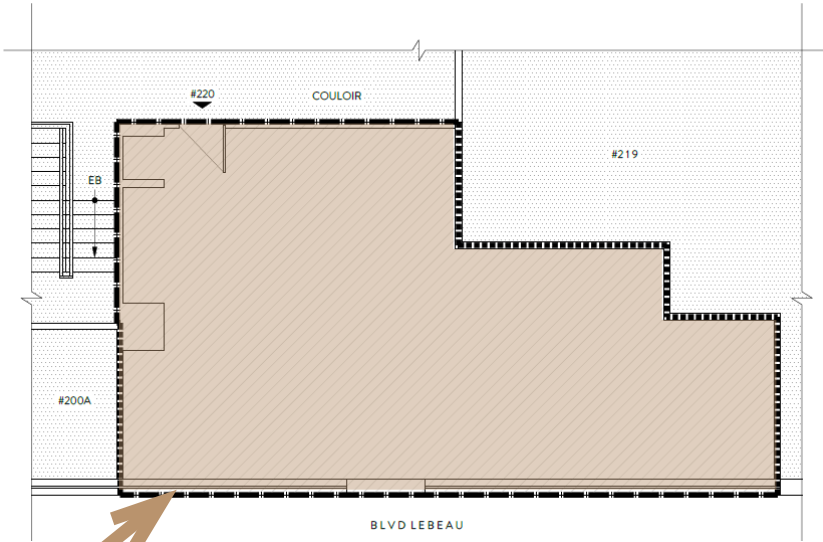
220A	191 pc/sf
------	-----------

LES PLANS POUR / PLANS FOR 571 BOUL. LEBEAU



219	1 431 pc/sf
-----	-------------

LES PLANS POUR / PLANS FOR 571 BOUL. LEBEAU



220	812 pc/sf
-----	-----------

LES PHOTOS / PHOTOS





CONTACTEZ-NOUS | CONTACT US

**ÉQUIPE DE LOCATION
LEASING TEAM**

T: +1 514 535 4444
leasing@brasswater.ca

JORDAN ALTMAN

Agent à la location
Leasing Agent

T: +1 514 775 1234
jaltman@brasswater.ca

GIL KASTNER

Chef de la direction location & développement des affaires
Chief Leasing Director & Business Development Officer

T: +1 514 592 5738
gkastner@brasswater.ca



BRASSWATER

245, avenue Victoria, Suite 801
Westmount, Qc | H3Z 2M6

T: +1 514 535 4444
www.brasswater.ca