

ST. VITAL FESTIVAL

New Retail in an Exceptional Trade Area

1919-1949 Abinojii Mikanah, Winnipeg, Manitoba



BUSY
RETAIL NODE



DOMINANT
SIGNAGE



GREAT
ACCESS



950+
PARKING STALLS



STRONG
TRADE AREA

ST. VITAL FESTIVAL

1919-1949 Abinojii Mikanah, Winnipeg, Manitoba

SURROUNDED BY RAPIDLY EXPANDING RESIDENTIAL COMMUNITIES

- Situated in a **safe neighbourhood**, in southeast Winnipeg on the north side of Abinojii Mikanah , just west of St. Anne's Road.
- St. Vital Festival serves the communities of St. Vital, St. Boniface, Southdale/Windsor Park.
- Opportunity to serve the new Sage Creek and Bonavista developments with plans for over 6,700 single and multifamily luxury homes.



ACCESS & TRAFFIC LINKS

Features superior access via a **controlled intersection** on St. Anne's Road and **right in/out** on Abinojii Mikanah.

Only a 15 minute drive to Downtown. The property enjoys **superior access and linkage** to all areas of the City with direct linkages to major arteries including St. Anne's Road, Abinojii Mikanah, and Lagimodiere Boulevard.

Adjacent to the **Awasisak Mēskanow Trail East**, a beautifully landscaped, paved walking and bike path that connects Lagimodiere Boulevard to Pembina Highway.

There are **53,600 vehicles per day** on Abinojii Mikanah and **28,900 vehicles per day** on St. Anne's Road.

Reference: City of Winnipeg Public Works Department 2024

204.474.2000

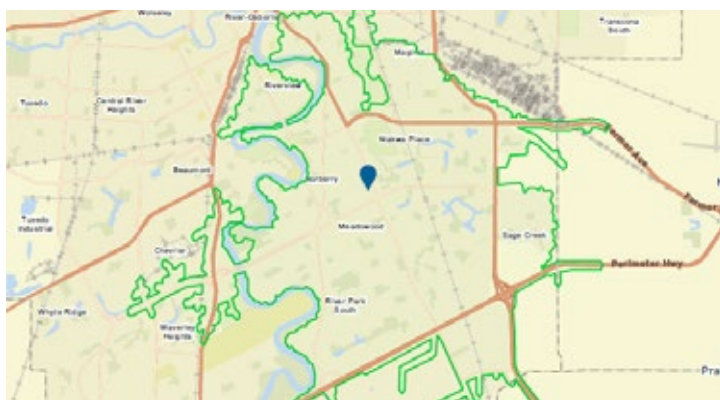
Shindico

ST. VITAL FESTIVAL

1919-1949 Abinojii Mikanah, Winnipeg, Manitoba

AN EXCEPTIONAL TRADE AREA

- **New 3,000 +/- square foot pad and 10,000 +/- square foot CRU available for development at busy shopping centre anchored by Home Depot and Sobeys. Other tenants on the site include Michaels, Boston Pizza and Part Source.**
- Strong retail node with **over 100 retailers and services** are located within a 1 kilometre radius of the site including St. Vital Shopping Centre, the regional centre for South Winnipeg, anchored by Walmart Supercentre, Hudson's Bay, Marshalls, Homesense, Red River Co-op Food Store, and Silver City Theaters.
- Great exposure to Abinojii Mikanah allowing for **dominant signage** opportunities.



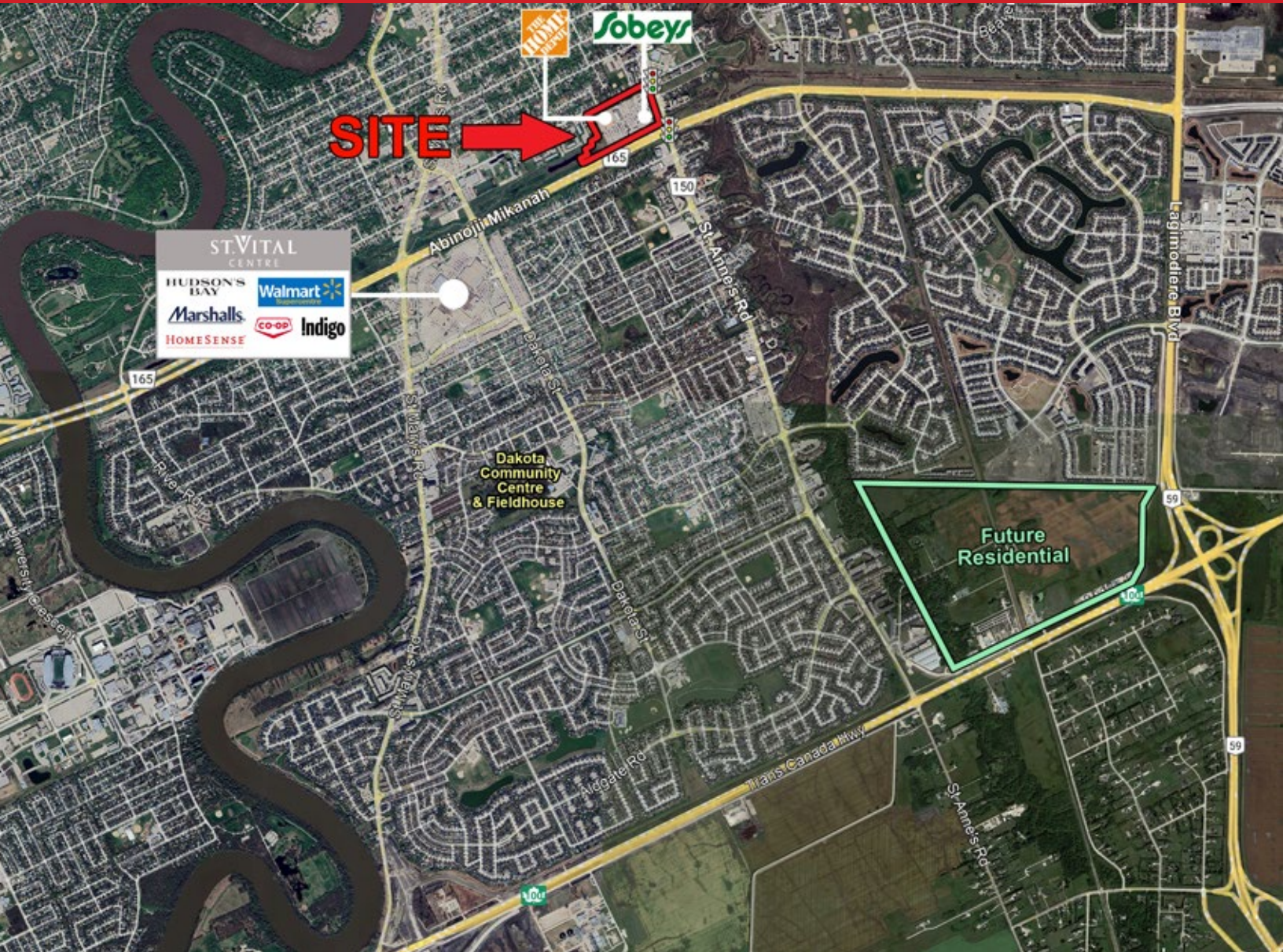
10 MINUTE DRIVE TIME DEMOGRAPHICS

Total Population	158,635
Daytime Population	120,557
Households	63,114
Median Age	38.5
Avg. Household Income	\$120,856

EnviroNics Analytics ©2025

ST. VITAL FESTIVAL

1919-1949 Abinojii Mikanah, Winnipeg, Manitoba



FOR MORE INFORMATION, PLEASE CONTACT:

Michael Stronger*

*SHINDICO REALTY, MICHAEL STRONGER and SHINDICO REALTY are affiliated Brokers

P (204) 928-8237

C (204) 793-3448

mstronger@shindico.com

Dino Alevizos*

*Services provided by Dino Alevizos Personal Real Estate Corporation

P (204) 928-8209

C (204) 781-9717

dalevizos@shindico.com

Shindico Realty Inc.

200-1355 Taylor Avenue

Winnipeg, Manitoba R3M 3Y9

P (204) 474-2000

inquire@shindico.com

www.shindico.com



Shindico is dedicated to the protection of the environment and the communities that we are a part of.

The accuracy of the information set out herein has not been confirmed, and Shindico Realty Inc. and its affiliates make no representations or warranties as to the accuracy of the information and assumes no responsibility for errors or omissions. The recipient is responsible to verify the accuracy of any information and bears all risk related to any inaccuracies.041426