

# FOR LEASE

## INDUSTRIAL SPACE AVAILABLE

Unit 1B: 22,000 SF | TOTAL BUILDING SIZE 147,800 SF



### Trailer Parking Available



2,400 AMPS POWER

# 510 RYERSON ROAD

LINCOLN PARK, NJ 07035



# PROPERTY HIGHLIGHTS

Total Size: 147,800 SF on 14.72 Acres

Total Available: Unit 1B: ± 22,000 SF

Office Area: ± 3,400 SF

Ceiling Height: 15'

Loading Doors: 1 Loading Dock

Column Spacing: 40' x 30'

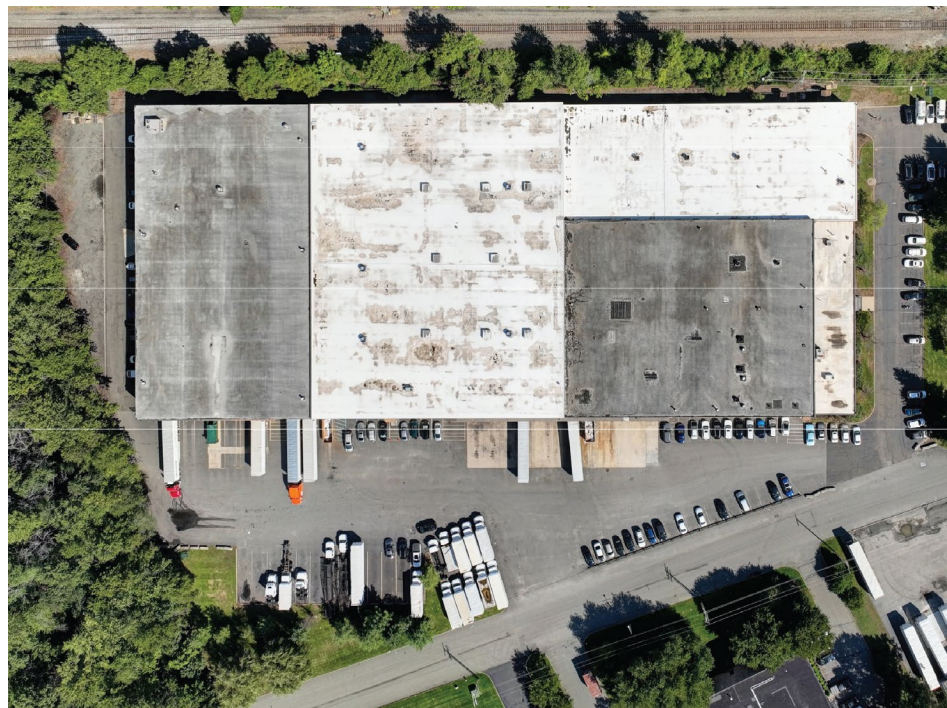
Sprinkler: Wet

Power: 2,400 Amps

Taxes & CAM: Inquire For Pricing

Asking Lease Rate: Inquire For Pricing

Availability: Immediate

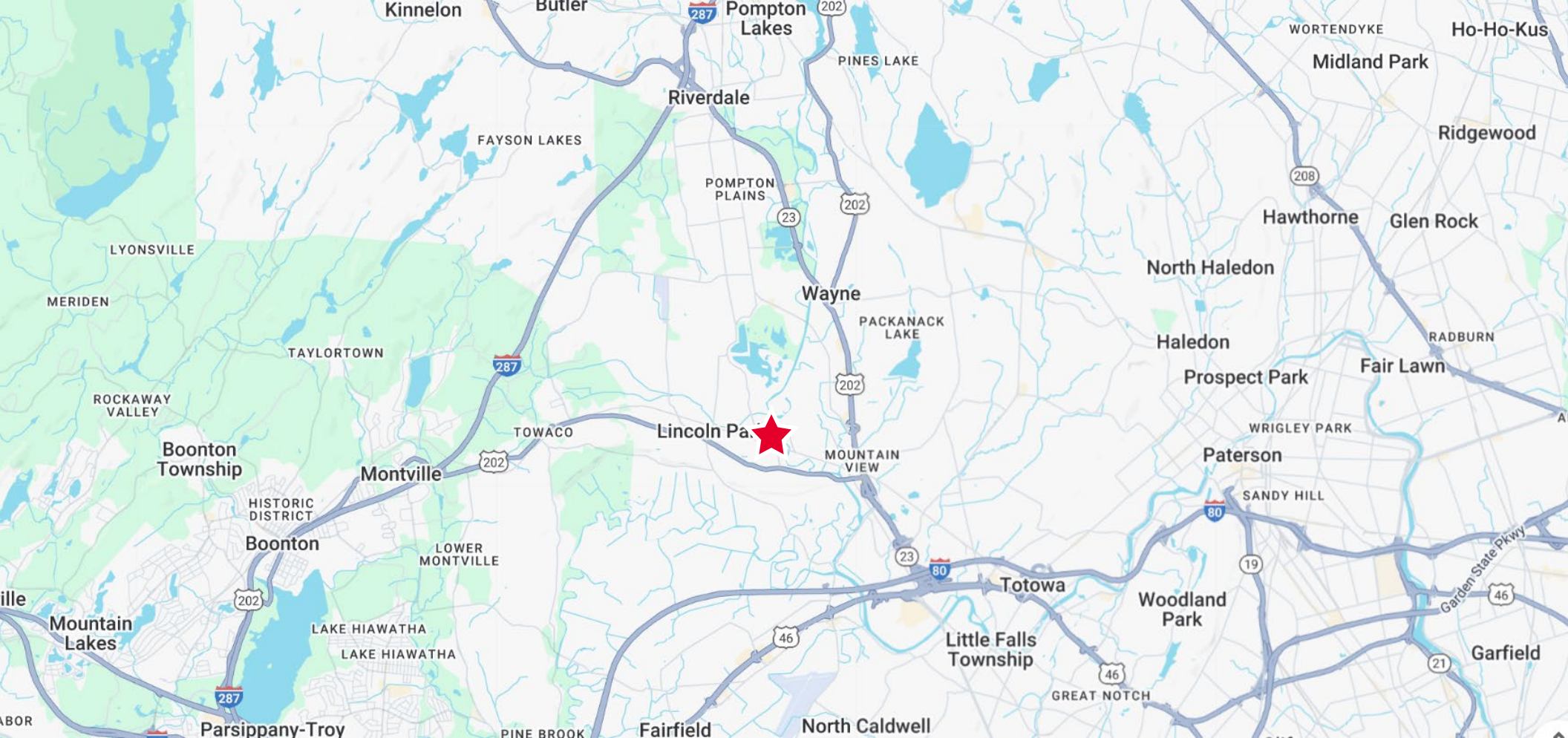




**UNIT 1B**  
22,000 SF



# FLOOR PLAN



# CONTACT INFORMATION

## TORSTEN THALER

+1 732 243 3060

torsten.thaler@cushwake.com

## THOMAS D. TUCCI, SIOR

+1 732 243 3120

thomas.tucci@cushwake.com

## JACK BIZUB

+1 732 444 8893

jack.bizub@cushwake.com



99 Wood Avenue South 8th Floor  
Iselin, NJ 08830  
+1 732 623 4700

One Meadowlands Plaza, 7th Floor  
East Rutherford, NJ 07073  
+1 201 935 4000

[cushmanwakefield.com](http://cushmanwakefield.com)



©2026 Cushman & Wakefield. All rights reserved. The information contained in this communication is strictly confidential. This information has been obtained from sources believed to be reliable but has not been verified. NO WARRANTY OR REPRESENTATION, EXPRESS OR IMPLIED, IS MADE AS TO THE CONDITION OF THE PROPERTY (OR PROPERTIES) REFERENCED HEREIN OR AS TO THE ACCURACY OR COMPLETENESS OF THE INFORMATION CONTAINED HEREIN, AND SAME IS SUBMITTED SUBJECT TO ERRORS, OMISSIONS, CHANGE OF PRICE, RENTAL OR OTHER CONDITIONS, WITHDRAWAL WITHOUT NOTICE, AND TO ANY SPECIAL LISTING CONDITIONS IMPOSED BY THE PROPERTY OWNER(S). ANY PROJECTIONS, OPINIONS OR ESTIMATES ARE SUBJECT TO UNCERTAINTY AND DO NOT SIGNIFY CURRENT OR FUTURE PROPERTY PERFORMANCE. PD-158496\_V9