

OFFICE BUILDING FOR LEASE



8500 EXECUTIVE PARK AVENUE

Fairfax, VA 22031



LEASING INFORMATION: 703.522.4600

NEIL ALT

703.284.5868
nalt@lpc.com

EAMON MCCRANN

703.284.5861
emccrann@lpc.com

JACK REDMOND

703.284.5880
jredmond@lpc.com

**LINCOLN
PROPERTY
COMPANY**

lpcwashingtondc.com

8500 EXECUTIVE PARK AVENUE

OFFICE FOR LEASE

Fairfax, VA 22031



PROPERTY HIGHLIGHTS

- Newly renovated building lobby, common area floor finishes, and restrooms
- No operating expense pass throughs
- Extended building hours, ideal for medical tenants
- Parking ratio of 3.6/1,000 SF
- Close proximity to multiple amenities including the Mosaic District, I-66, I-495, Rt.50, and the Dunn Loring Metro Station

AVAILABILITIES

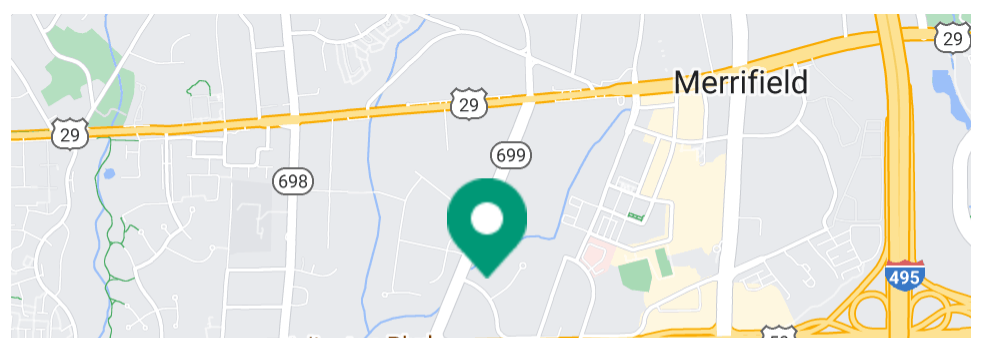
Suite 102
Suite 104
Suite 202
Suite 312
Suite 404
Suite 406

SF

1,210 - 2,975 SF
1,765 - 2,975 SF
2,691 SF
2,530 SF
2,620 SF
2,600 SF

DATE AVAILABLE

Immediately
Immediately
2/1/24
Immediately
Immediately
Immediately



NEIL ALT

703.284.5868
nalt@lpc.com

EAMON MCCRANN

703.284.5861
emccrann@lpc.com

JACK REDMOND

703.284.5880
jredmond@lpc.com

LINCOLN
PROPERTY
COMPANY

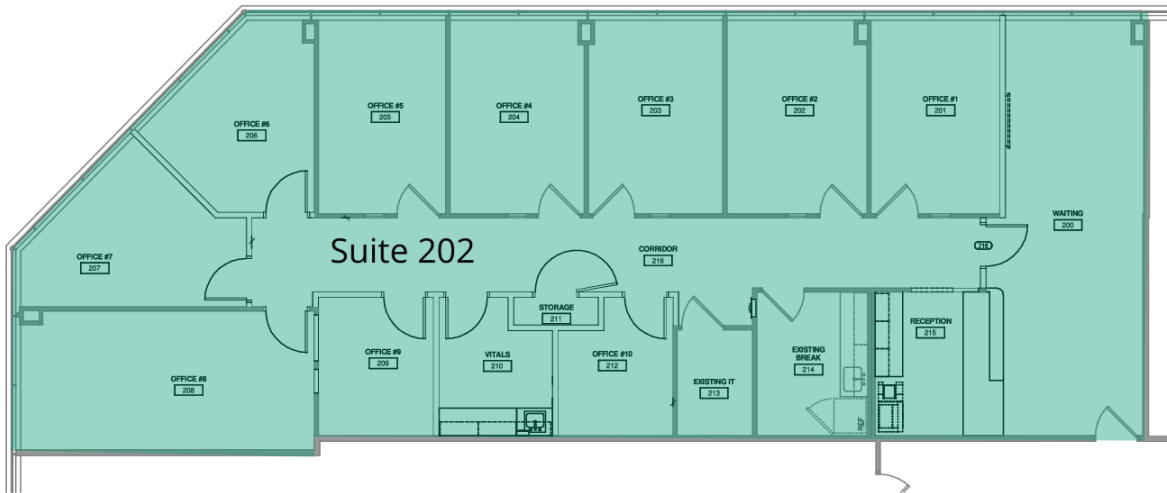
LEASING INFORMATION: 703.522.4600

lpcwashingtondc.com

8500 EXECUTIVE PARK AVENUE

SUITE 202

Fairfax, VA 22031



SUITE	SIZE	DESCRIPTION
■ Suite 202	2,691 SF	Available 2/1/24

NEIL ALT

703.284.5868
nalt@lpc.com

EAMON MCCRANN

703.284.5861
emccrann@lpc.com

JACK REDMOND

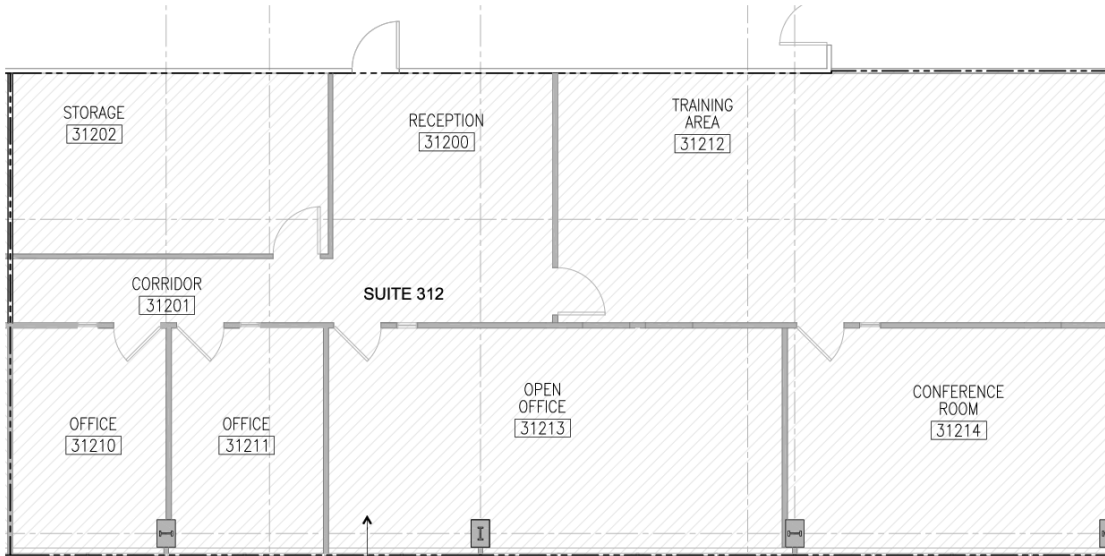
703.284.5880
jredmond@lpc.com

LINCOLN
PROPERTY
COMPANY

8500 EXECUTIVE PARK AVENUE

SUITE 312

Fairfax, VA 22031



SUITE	SIZE	DESCRIPTION	VIRTUAL TOUR
■ Suite 312	2,530 SF	Available Immediately.	View Here

NEIL ALT

703.284.5868
nalt@lpc.com

EAMON MCCRANN

703.284.5861
emccrann@lpc.com

JACK REDMOND

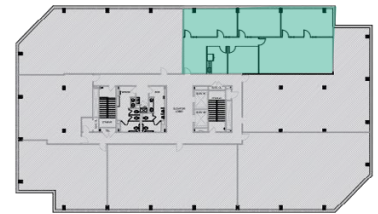
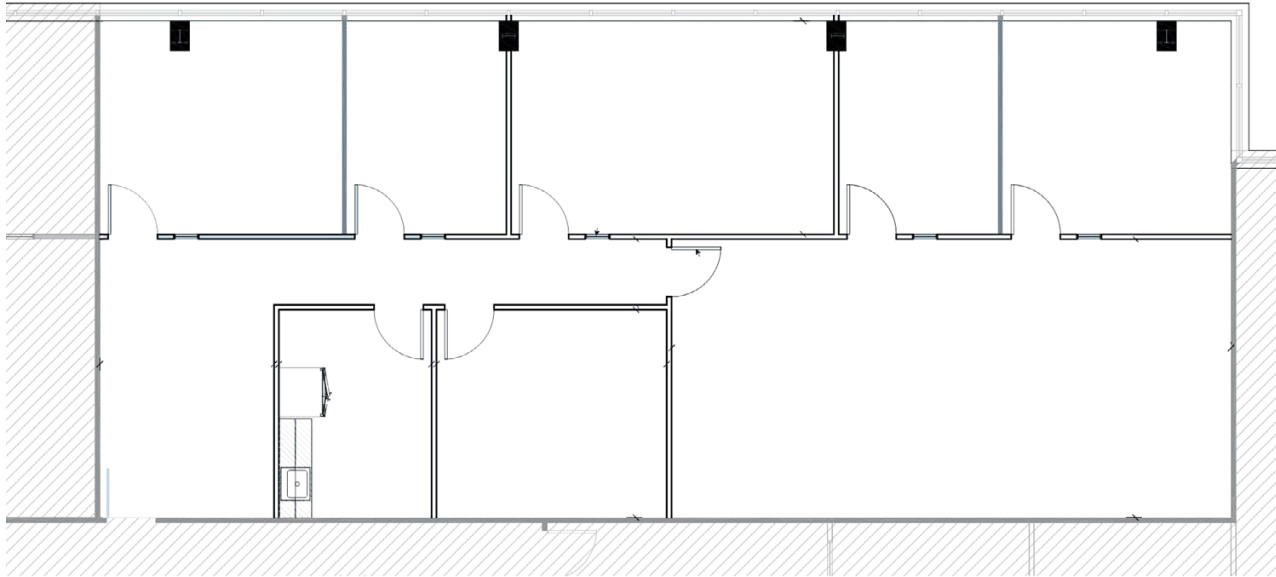
703.284.5880
jredmond@lpc.com

**LINCOLN
PROPERTY
COMPANY**

8500 EXECUTIVE PARK AVENUE

SUITE 404

Fairfax, VA 22031



SUITE	SIZE	DESCRIPTION	VIRTUAL TOUR
■ Suite 404	2,620 SF	Available Immediately.	View Here

NEIL ALT

703.284.5868
nalt@lpc.com

EAMON MCCRANN

703.284.5861
emccrann@lpc.com

JACK REDMOND

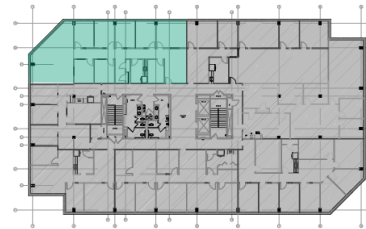
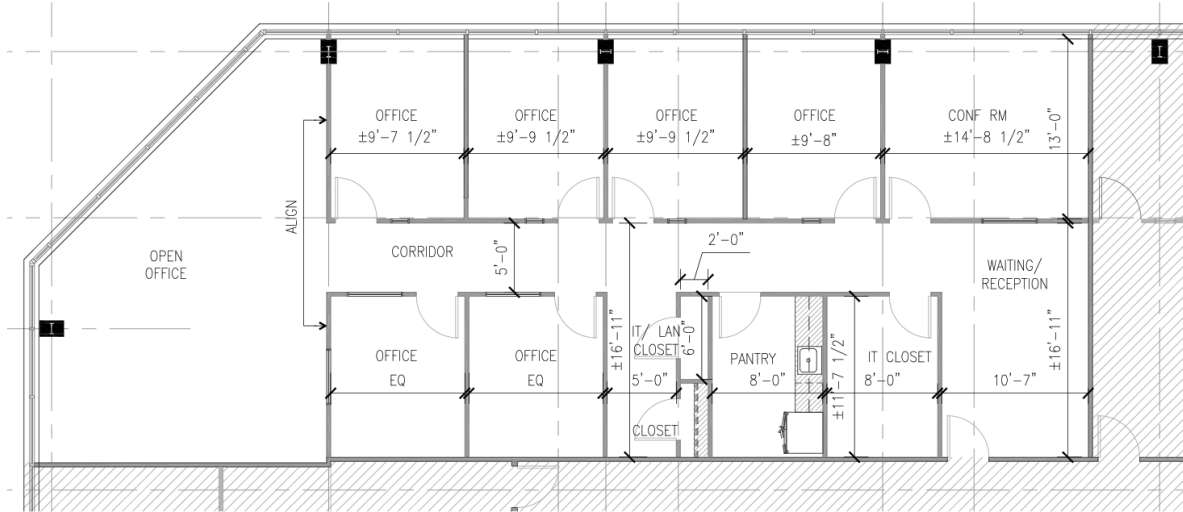
703.284.5880
jredmond@lpc.com

**LINCOLN
PROPERTY
COMPANY**

8500 EXECUTIVE PARK AVENUE

SUITE 406

Fairfax, VA 22031



SUITE	SIZE	DESCRIPTION	VIRTUAL TOUR
■ Suite 406	2,600 SF	Available Immediately.	View Here

NEIL ALT

703.284.5868
nalt@lpc.com

EAMON MCCRANN

703.284.5861
emccrann@lpc.com

JACK REDMOND

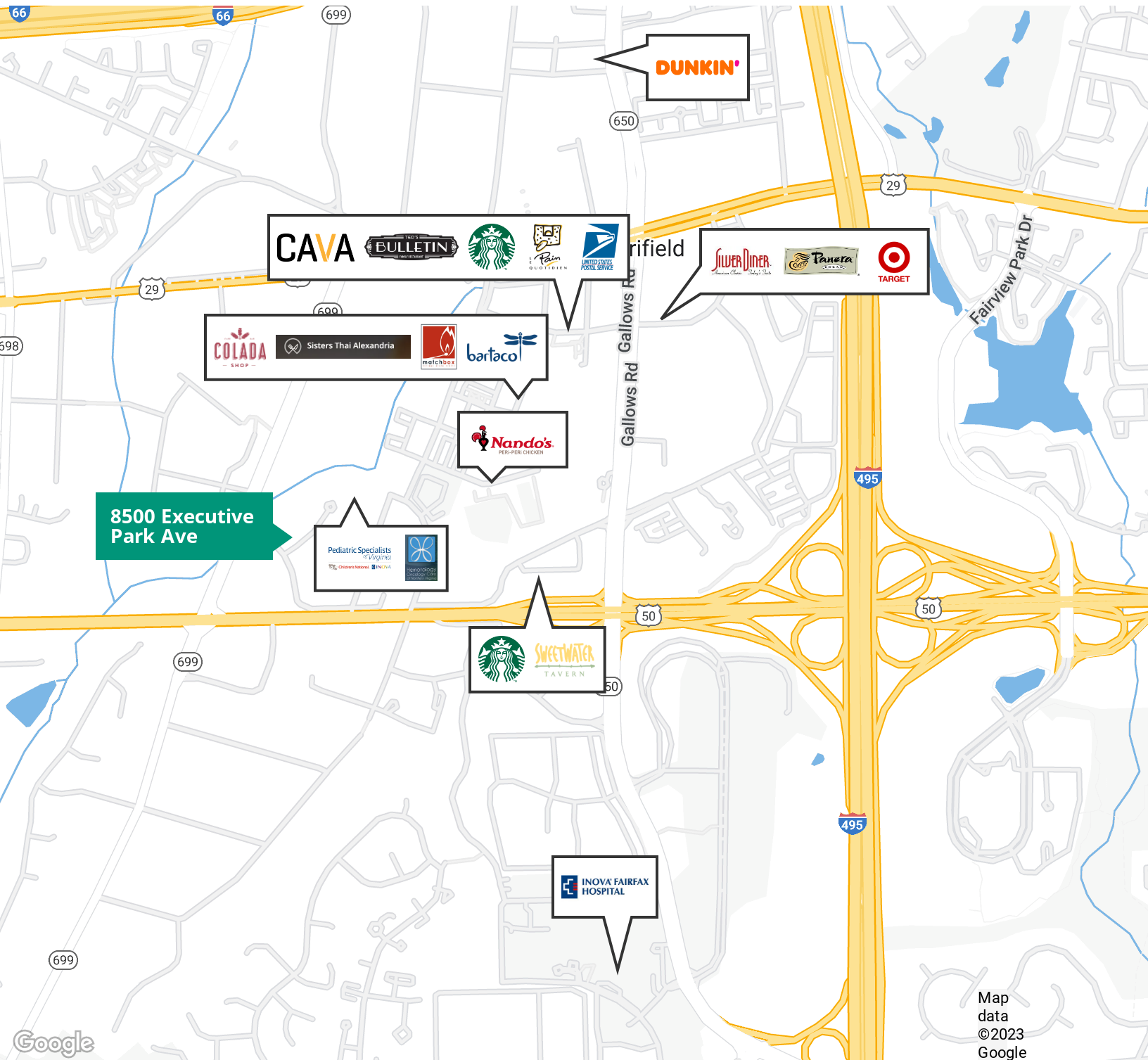
703.284.5880
jredmond@lpc.com



8500 EXECUTIVE PARK AVENUE

FAIRFAX, VA

Fairfax, VA 22031



Map data ©2023 Google

NEIL ALT

703.284.5868
nalt@ipc.com

EAMON MCCRANN

703.284.5861
emccrann@ipc.com

JACK REDMOND

703.284.5880
jredmond@ipc.com

LINCOLN
PROPERTY
COMPANY



8500 EXECUTIVE PARK AVENUE

Fairfax, VA 22031



LEASING INFORMATION: 703.522.4600

NEIL ALT

703.284.5868
nalt@lpc.com

EAMON MCCRANN

703.284.5861
emccrann@lpc.com

JACK REDMOND

703.284.5880
jredmond@lpc.com

**LINCOLN
PROPERTY
COMPANY**