

576

Sacramento St.

San Francisco, CA 94111

TCN 
WORLDWIDE
REAL ESTATE SERVICES

For Lease

Craig Hansson
craig@starboardcre.com
415.710.7768

Mark Meier
mark@starboardcre.com
415.299.7042



STARBOARD CRE
LOCAL • INDEPENDENT • ENTREPRENEURIAL

BUILDING SUMMARY

Address: 576 Sacramento St.

Square Footage: ±1,500 SF

Rate: Negotiable

Term: Negotiable

Tenancy Type: Multi Tenant

Listing Type: Lease

Space Type: Office

Lease Type: Industrial Gross



Historic Office Building

Located in financial district



Prime Financial Location

Steps from dining transit



Walkable Surrounding Area

Near cafes restaurants transportation



Abundant Natural Light

Light from all sides



Operable Window Design

Fresh air natural ventilation



Low Traffic Environment

Minimal foot traffic building



Flexible Lease Terms

Accommodates various tenant needs



Downtown Central Access

Convenient to major transportation



Established Business Setting

Surrounded by active commercial uses

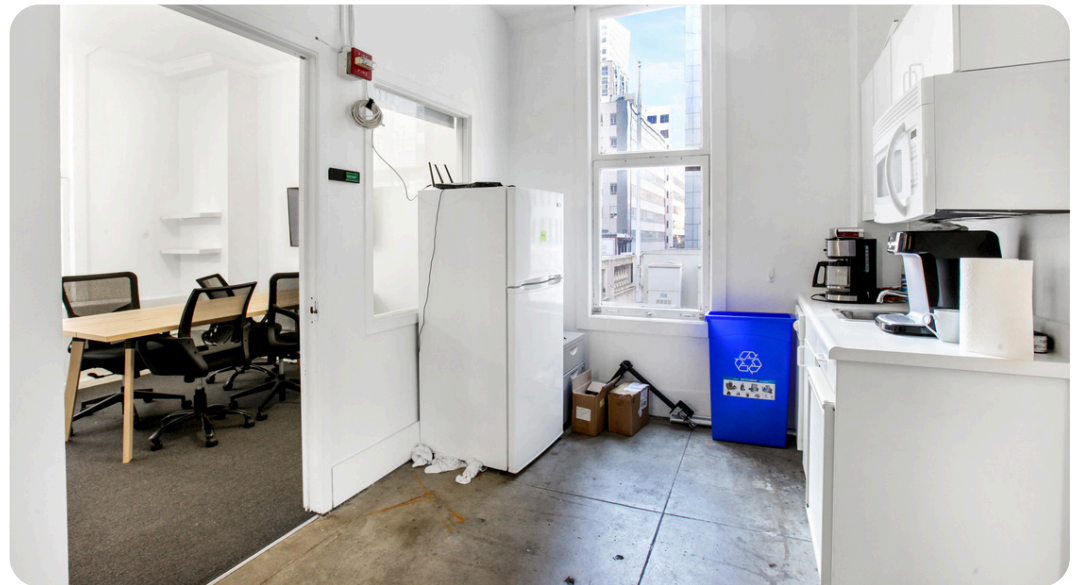
4th Floor

Space Summary

- **Floor / Suite No.:** 4th Floor
- **Square Ft.:** ± 1,500 SF
- **Available:** Now
- **Price:** Negotiable
- **Term:** Negotiable
- **Lease Type:** Industrial Gross

Highlights

- Entire 4th floor opportunity
- Efficient open floor plan layout
- One conference room included
- Open private office space
- Kitchenette for daily use
- One restroom with shower
- Four sides natural light
- Operable windows throughout space
- Roof deck with downtown views
- Light foot traffic environment



Images | 4th Floor



Images | 4th Floor



AGENTS



Craig Hansson

Vice President

craig@starboardcre.com

CELL: 415.710.7768

CA DRE # 01841643

Call

View Profile



Mark Meier

Lease and Sales Senior Associate

mark@starboardcre.com

CELL: 415.299.7042

CA DRE # 02047169

Call

View Profile





STARBOARD CRE
LOCAL • INDEPENDENT • ENTREPRENEURIAL

STARBOARDCRE.COM

OFC. PHONE 415.765.6900

49 POWELL STREET, SAN FRANCISCO, CA 94102



Unique Vision

We see what others miss

Local Market Leader

No one knows Northern
California like we do

Full-Service Firm

We do it all

Locally based, and technology-forward, our brokers are highly qualified experts backed by a full-service, in-house support team who understand the intricacies of San Francisco real estate. Starboard CRE brings decades of brokerage experience representing over 600 million square feet of space with an aggregate lease value of over 10 billion and investments sold over 3 billion.



CA DRE# 01103056