



METROPOLITAN PACIFIC  
REAL ESTATE GROUP

FOR LEASE



## FLAGSHIP RETAIL OPPORTUNITY 1402 THIRD STREET PROMENADE Santa Monica, CA

- 11,600 plus basement - **Divisible**
- Once in a cycle retail opportunity to join Google, JD Sports, Culto, Uniqlo, Miniso, and more on the best block of Third Street Promenade
- Flagship-quality corner space with exceptional visibility and 50' of frontage on Third Street and 150' along Santa Monica Blvd.
- Digital signage available
- High foot traffic from tourists, locals, and office workers year-round
- Ideal for flagship retail, experiential brands, or lifestyle concepts seeking maximum exposure
- Close proximity to the major hotels and parking structures
- Expansive ceiling heights, strong architecture, and adaptable floor plan for creative merchandising
- Available July 2026

### CONTACT

**310 395 7300**

**METROPOLITAN PACIFIC**

DRE #01395401

**Gary Steinhardt**

DRE #02151907

[gsteinhardt@metpac.com](mailto:gsteinhardt@metpac.com)

**John Warfel**

DRE# 01184386

[jwarfel@metpac.com](mailto:jwarfel@metpac.com)

REPRESENTED BY METROPOLITAN COMMERCIAL REAL ESTATE SERVICES

Please do not disturb existing tenant. Shown by appointment only.

# 1402 THIRD STREET PROMENADE

**Best corner on the best block on the Promenade:**

**New tenants on the block include Google, JD Sports, Culto, Uniqlo, Miniso, and more.**

**Raising Cane's is coming soon across the street.**



## CONTACT

**310 395 7300**

**METROPOLITAN PACIFIC**

DRE #01395401

**Gary Steinhardt**

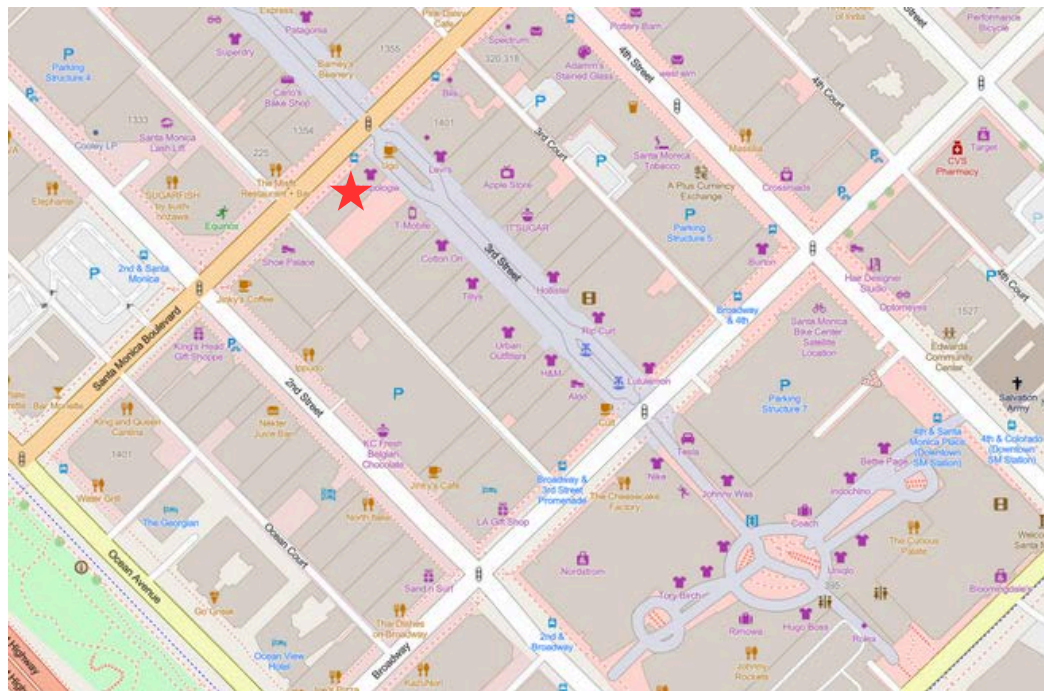
DRE #02151907

[gsteinhardt@metpac.com](mailto:gsteinhardt@metpac.com)

**John Warfel**

DRE# 01184386

[jwarfel@metpac.com](mailto:jwarfel@metpac.com)



REPRESENTED BY METROPOLITAN COMMERCIAL REAL ESTATE SERVICES

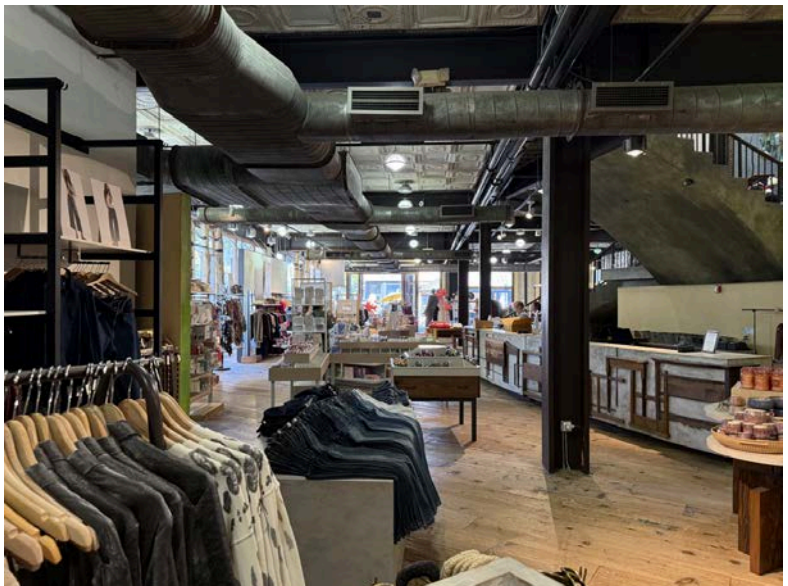
Please do not disturb existing tenant. Shown by appointment only.

# 1402 THIRD STREET PROMENADE

## 2 Stories with Basement

Basement	4,850
First Fl.	6,750
Second Fl.	6,750
<b>Total</b>	<b>18,350</b>

**Willing to  
demise**



### CONTACT

**310 395 7300**

**METROPOLITAN PACIFIC**

DRE #01395401

**Gary Steinhardt**

DRE #02151907

[gsteinhardt@metpac.com](mailto:gsteinhardt@metpac.com)

**John Warfel**

DRE# 01184386

[jwarfel@metpac.com](mailto:jwarfel@metpac.com)

REPRESENTED BY METROPOLITAN COMMERCIAL REAL ESTATE SERVICES

Please do not disturb existing tenant. Shown by appointment only.

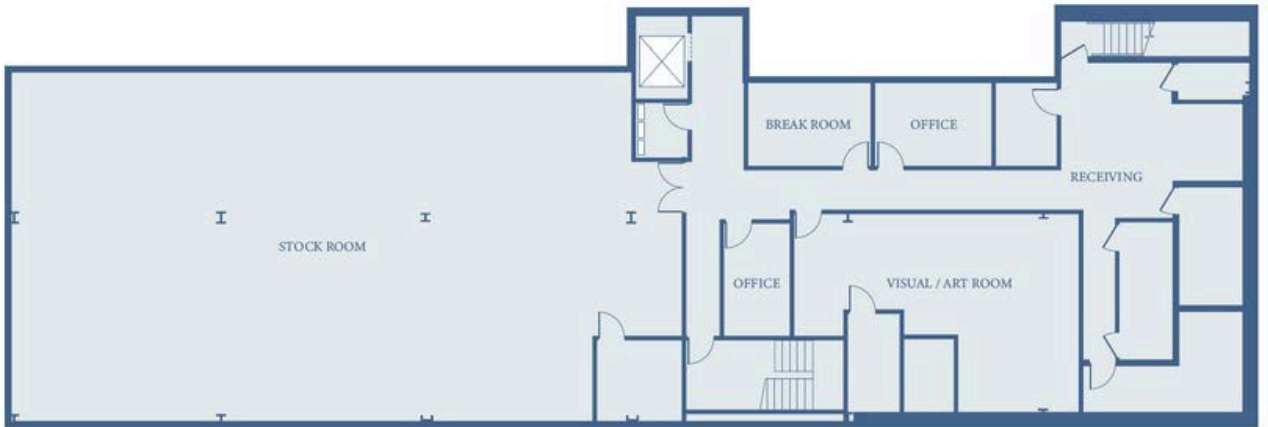
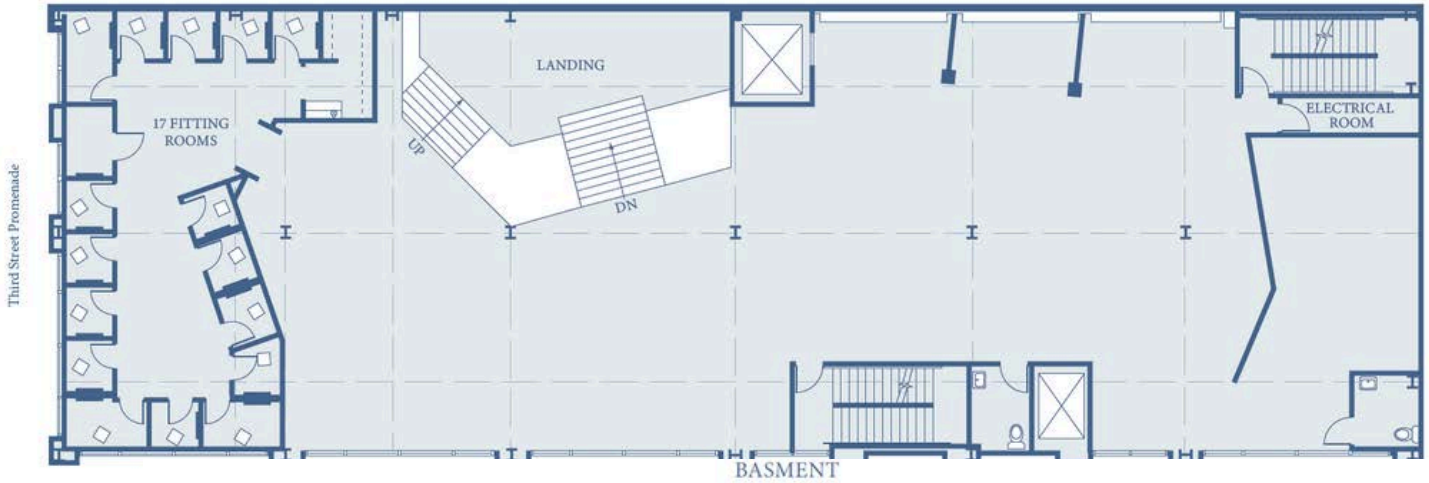
# 1402 THIRD STREET PROMENADE

Built in 1996, this well-designed retail space has the modern necessities for a first-class retailer, including secure loading and trash areas in the alley.

FIRST FLOOR



SECOND FLOOR



REPRESENTED BY METROPOLITAN COMMERCIAL REAL ESTATE SERVICES

Please do not disturb existing tenant. Shown by appointment only.