

CBRE urban retail team



83
Yorkville

LUXURY RETAIL FOR LEASE IN THE HEART OF YORKVILLE

83 yorkville



Property Details

| | | |
|-------------------|---|----------------------------|
| Address: | 83 Yorkville Avenue, Toronto | |
| Size: | Lower Level: | 2,154 sq. ft. |
| | Ground: | 2,407 sq. ft. |
| | Second: | 2,427 sq. ft. |
| | Third : | <u>340 sq. ft.</u> + patio |
| | Total: | 7,328 sq. ft. |
| Net Rent: | Please contact listing agents | |
| TMI: | \$23.00 per sq. ft. (ground, second & third floors) | |
| Available: | Immediately | |

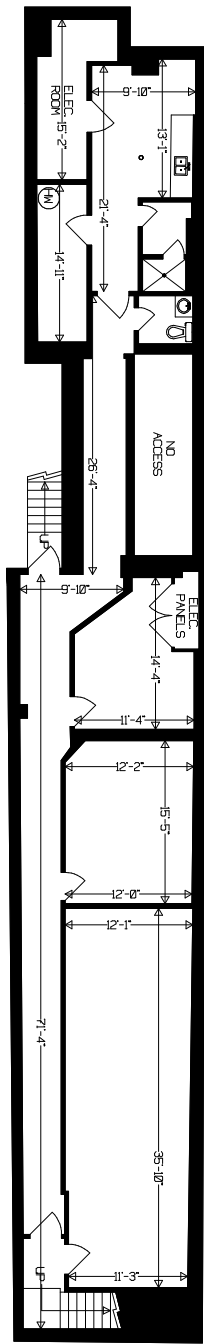
Full building opportunity or potential to demise:
Ground (includes basement) and second level (includes third level) may be leased separately or together.

- Incredible location in the heart of Bloor-Yorkville
- Prominent storefront and excellent signage opportunity onto Yorkville Ave
- Neighbouring tenants include Reformation, Christian Louboutin, Chanel, Balenciaga, KITH, Diptyque, BA&SH, Veronica Beard, The Four Seasons Hotel, Hazelton Hotel, Isaia, and Brunello Cucinelli

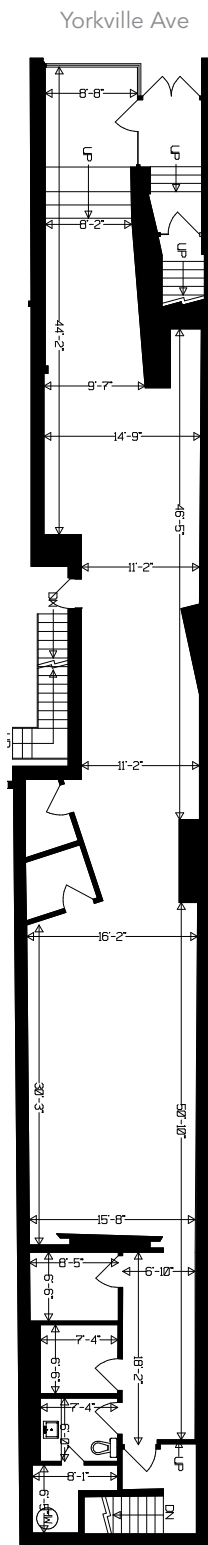
Property Video



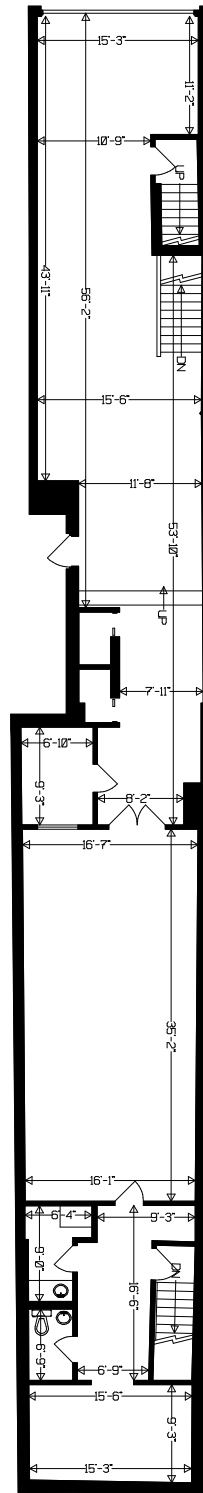
Lower Level
2,154 SF



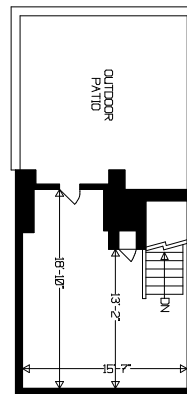
Ground
2,407 SF

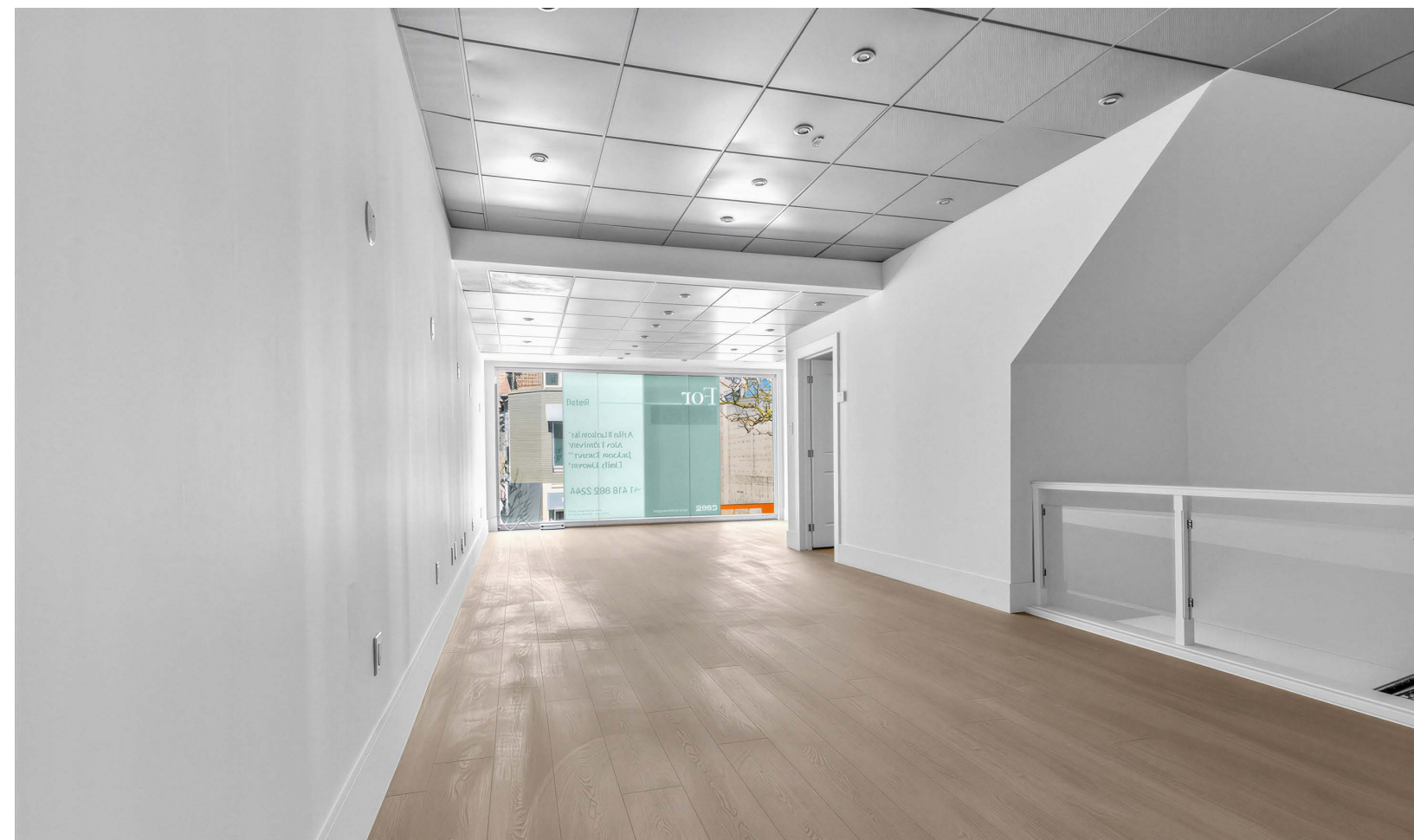


Second
2,427 SF



Third
340 SF
+ patio







FOUR SEASONS

KITH

ISAIA
NAPOLI

BALENCIAGA

CHANEL

83
yorkville

Reformation

STONE ISLAND

Christian
Louboutin

BRUNELLO CUCINELLI

DIPTYQUE
PARIS

IN GOOD
COMPANY

NEIGHBOURING YORKVILLE AVE TENANTS

BLOOR yorkville BR

The Bloor-Yorkville node represents the pinnacle of Canadian high-street retail. The Yorkville and Cumberland area is recognized internationally as one of the top ten shopping destinations in the world, with high-end fashion uses dominating the street front. The area provides residents and tourists with the country's most prestigious selection of luxury and aspirational retailers demonstrating the highest net rental rates in Canada. The area boasts 2.3 million sq. ft. of retail space, 1.5 million of which is street-front. Retail sales performance along the Bloor Street corridor often exceeds \$2,500 per sq. ft.



Bloor-Yorkville Streetscape

| | | |
|---|----------------|----------------|
| YORKVILLE VILLAGE ETHAN ALLEN EQUINOX WHOLE FOODS TNT SUPERNATURAL | JAMES PERSE | |
| | DEREK ROSE | |
| | FRETTE | |
| | HAZELTON HOTEL | ONE RESTAURANT |
| DEVELOPMENT SITE | BA&SH | |

| | | | | | | | | | | | | | | |
|--------------------|--|-----------------|-------|-------|--------------|--------|------------|--------------|------|----------------|-------------|------------------|---------------|-------------------|
| RODD & GUNN | | HAZELTON AVENUE | KITON | ABURI | STONE ISLAND | CHANEL | BALENCIAGA | SUNGLASS HUT | KITH | PUBLIC PARKING | FLO'S DINER | REVITALIZE JUICE | GOGO TRAINING | REGENCY YORKVILLE |
| CAUDALIE | | | | | | | | | | | | | | |
| LE LABO | | | | | | | | | | | | | | |
| HEFFEL | | | | | | | | | | | | | | |
| SUITSUPPLY | | | | | | | | | | | | | | |
| V HAZELTON | | | | | | | | | | | | | | |
| BRUNELLO CUCINELLI | | | | | | | | | | | | | | |

| | |
|--------------------|------|
| ANINE BING | BUCA |
| FOUR SEASONS HOTEL | |



Click to Play
Neighbourhood Video

| | | | | |
|-----------------|-------|--------|----------------|--|
| DELYSEES | LUMAS | STK | BANG & OLFUSEN | |
| YORKVILLE PLAZA | | | BH & CO. | |
| | | | CATALYST | |
| ECKSAND | LEONE | SECRET | LADUREE | |

| | | |
|----------------|------------|--------------------|
| YORKVILLE LANE | | CIBO |
| ZAZA | BAY REYNA | BANDIERA JEWELLERS |
| PARKING | HEMINGWAYS | OXLEY |

| | | | | | | | | | | | |
|---------------|--------|-------------------|----------------|---------------|-----------|---------------------|-------------|--------------|----------|--------------|-------|
| OLD YORK LANE | | KASA MOTO | VERONICA BEARD | 101 YORKVILLE | DIPYTIQUE | CHRISTIAN LOUBOUTIN | REFORMATION | 83 YORKVILLE | EBILLION | MINE & YOURS | ISAIA |
| LA CANADIENNE | FIORIO | GOLDSTRUCK COFFEE | CORBO STUDIO | PURE + SIMPLE | SASSAFRAZ | | | | | | |

| | |
|-------------------|------------|
| TRATTORIA NERVSOA | STOCK T.C. |
| LAYWINES | |
| EUROLINE | HELLO NORI |
| AESOP | |
| TOKYO SMOKE | STARBUCKS |

| |
|--------------------|
| OTTO |
| PET VALU |
| MIZNON |
| AMADEUS PATISSERIE |

CUMBERLAND STREET

CUMBERLAND STREET

| | | | | | | | | | | | | | | | | | | | |
|---------------|-----------------|-----------|-------------------------------|-------------|----------------|----------------|----------|----------------|---------|-----------|--------------|------------|----------|--------|----------|--------------|--------------------|--------|----------------|
| HSBC | OPTIONS FOR HER | NESPRESSO | HARRY ROSEN FLAGSHIP (FUTURE) | | YORKVILLE PARK | | | | | | | | | | | | | | |
| LOUIS VUITTON | TIFFANY & CO. | 144 BLOOR | LAFAYETTE 148 | LUCA FALONI | GUCCI | ALEXANDER WANG | LADERACH | PARIS BAGUETTE | MANDY'S | STARBUCKS | | | | | | | | | |
| | | | | | | | | | | | SANT LAURENT | L'OCCITANE | ELEVENTY | NUTBAR | BURBERRY | KUPERT & KIM | VAN CLEEF & ARPELS | HERMÈS | 100 BLOOR ST W |

| | |
|-------------|------------------------|
| DECIUM | PI CO. |
| HARRY ROSEN | 80 BLOOR WEST |
| ROOTS | TIFFANY & CO. (FUTURE) |

| | | | | | |
|----------|--------------------|--------------|-----------|---------|-----------|
| PLANTA | CUMBERLAND TERRACE | | | | |
| ALO YOGA | BROWNS SHOES | HOLT RENFREW | ARC'TERYX | ARITZIA | SMEG |
| | | | | | LULULEMON |

| | |
|---------------------|---------|
| 2 BLOOR STREET EAST | W HOTEL |
|---------------------|---------|

BLOOR STREET WEST

BLOOR STREET WEST

| | | | | | | | | | | | | | | | | |
|----------------|----------------|------------|----------|----------|---------|---------|-----------|----------------|------------|---------|-------|-----------|------|------------|---------------------|-------|
| 157 BLOOR ST W | 151 BLOOR ST W | MONT BLANC | BONPOINT | MAX MARA | BVLGARI | MONCLER | 131 BLOOR | WILLIAM ASHLEY | BLACK GOAT | CARTIER | PRADA | FERRAGAMO | DIOR | LORO PIANA | ROYAL DE VERSAILLES | ROLEX |
|----------------|----------------|------------|----------|----------|---------|---------|-----------|----------------|------------|---------|-------|-----------|------|------------|---------------------|-------|

| | | | | | | |
|--------|-----|----------|------------|-----|---------|---------|
| MOOMOO | MCM | 89 BLOOR | APM MONACO | COS | SEPHORA | TD BANK |
|--------|-----|----------|------------|-----|---------|---------|

| | | | |
|-------|-----------------|--------|------|
| BIRKS | SWAROVSKI | EATALY | LCBO |
| EARLS | MANULIFE CENTRE | | |
| | L.L. BEAN | | |

| | | | |
|----------|-------------|---------------|---------------------|
| 19 BLOOR | SCOTTIABANK | 15 BLOOR WEST | 1 BLOOR STREET WEST |
|----------|-------------|---------------|---------------------|

| | | |
|-------------|-------|------|
| SCOTTIABANK | MANGO | NIKE |
| CHICK'FILA | | |



Advisory Team

ARLIN MARKOWITZ*
Executive Vice President
416 815 2374
arlin.markowitz@cbre.com

ALEX EDMISON*
Senior Vice President
416 874 7266
alex.edmison@cbre.com

JACKSON TURNER**
Senior Vice President
416 815 2394
jackson.turner@cbre.com

EMILY EVERETT*
Sales Associate
647 943 4185
emily.everett@cbre.com

*Sales Representative **Broker

CBRE

This disclaimer shall apply to CBRE Limited, Real Estate Brokerage, and to all other divisions of the Corporation; to include all employees and independent contractors ("CBRE"). The information set out herein, including, without limitation, any projections, images, opinions, assumptions and estimates obtained from third parties (the "Information") has not been verified by CBRE, and CBRE does not represent, warrant or guarantee the accuracy, correctness and completeness of the Information. CBRE does not accept or assume any responsibility or liability, direct or consequential, for the Information or the recipient's reliance upon the Information. The recipient of the Information should take such steps as the recipient may deem necessary to verify the Information prior to placing any reliance upon the Information. The Information may change and any property described in the Information may be withdrawn from the market at any time without notice or obligation to the recipient from CBRE. CBRE and the CBRE logo are the service marks of CBRE Limited and/or its affiliated or related companies in other countries. All other marks displayed on this document are the property of their respective owners. All Rights Reserved.