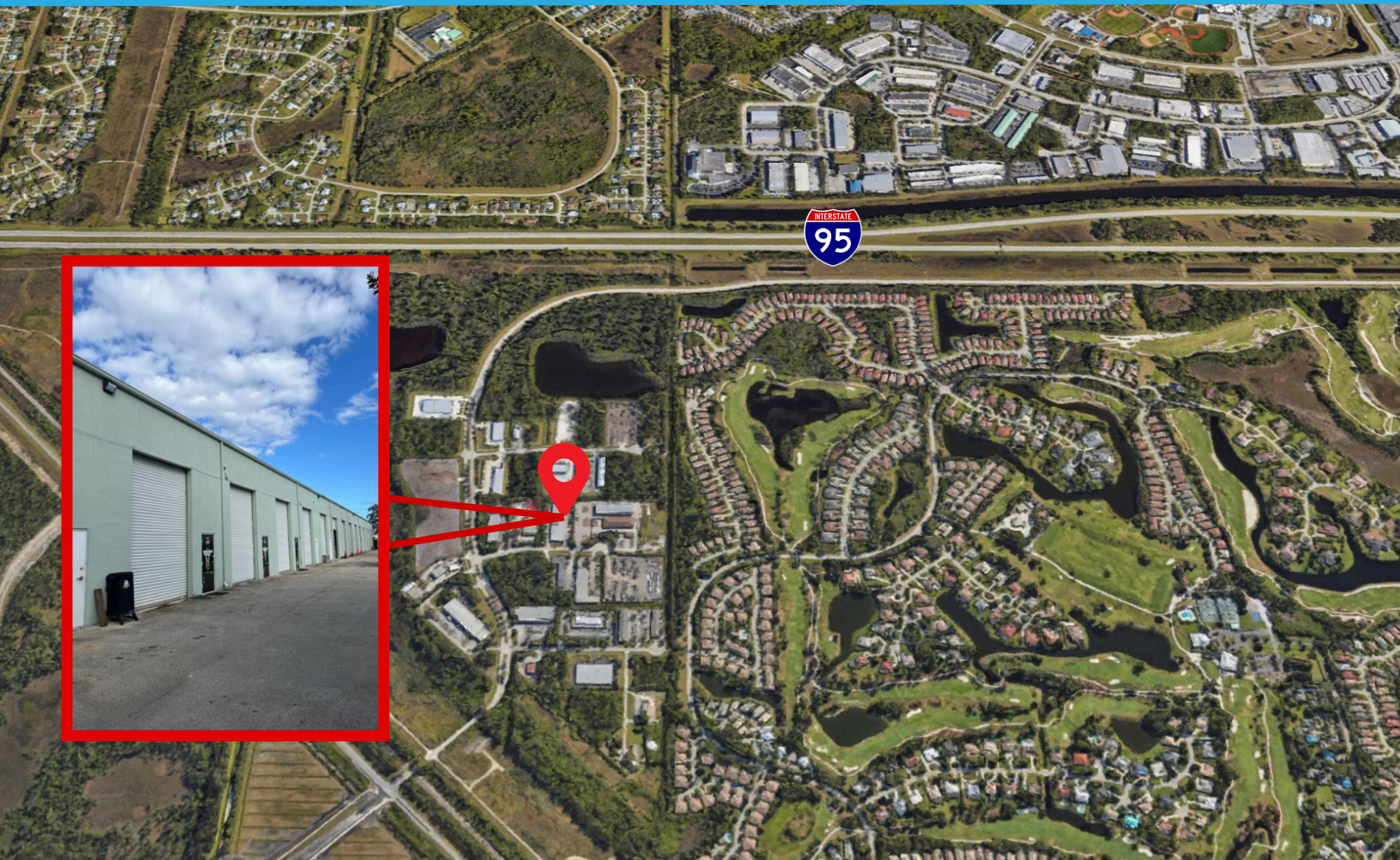


WAREHOUSE SPACE FOR LEASE

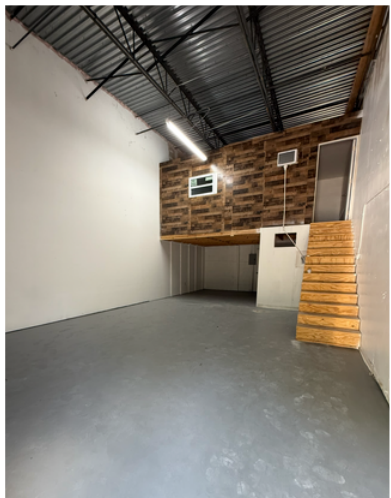
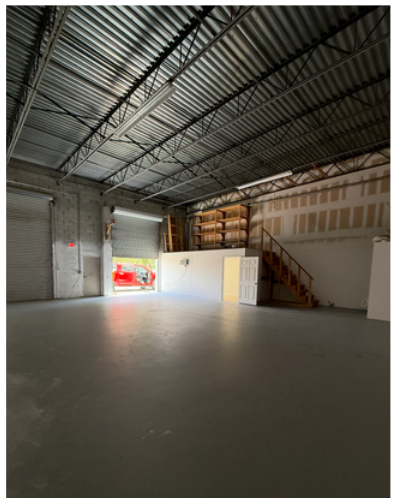


2155 NW Settle Ave, Port St. Lucie, FL 34986



850 - 4,250 SF | **20' Ceilings** | **16' Doors** | **Zoning: IN-PSL**

HEG Realty is pleased to offer versatile warehouse spaces in the heart of Port St. Lucie, FL. Located less than a mile west of I-95, this property provides easy access and convenience for growing businesses. Spaces range from 850 SF to 4,250 SF, featuring 20' ceilings and 16' grade level doors making this the ideal space for growing businesses seeking efficiency and flexibility in South Florida.



HEG REALTY LLC
STEVE BESS

📞 323-810-7241 ✉️ STEVE@HERSHEQUITY.COM
📍 1830 HYPOLUXO ROAD, SUITE B, LAKE WORTH, FL 33462