

1064 Eglinton

Avenue West

Retail for Lease in the Heart of Forest Hill
Between Allen Road and Bathurst Street



CBRE

1064 Eglinton

Avenue West

Property Details

Address: 1064 Eglinton Avenue West, Toronto

Size: +/- 2,000 sq. ft. + full basement

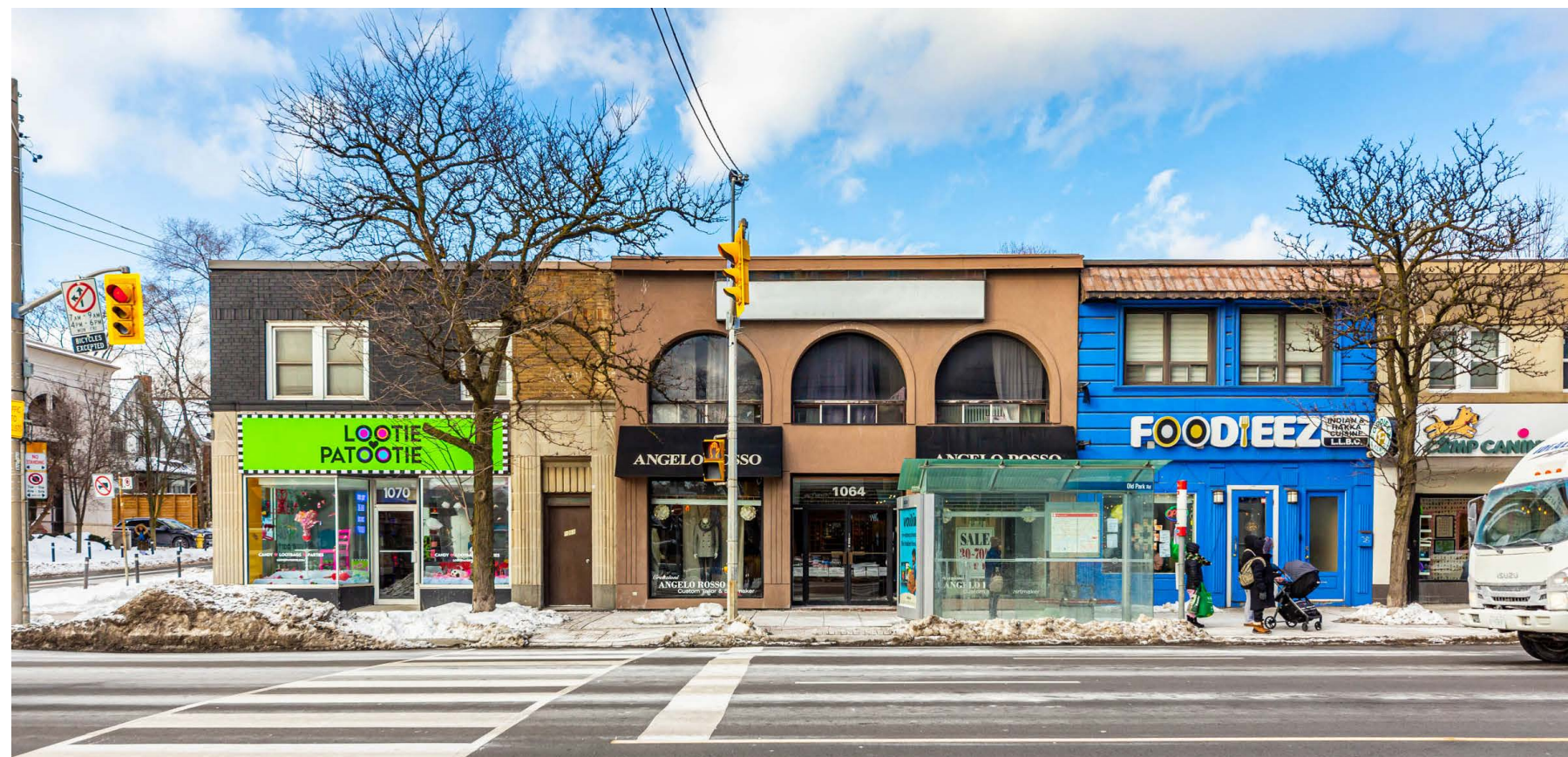
Net Rent: \$40.00 per sq. ft.

TMI: \$23.00 per sq. ft.

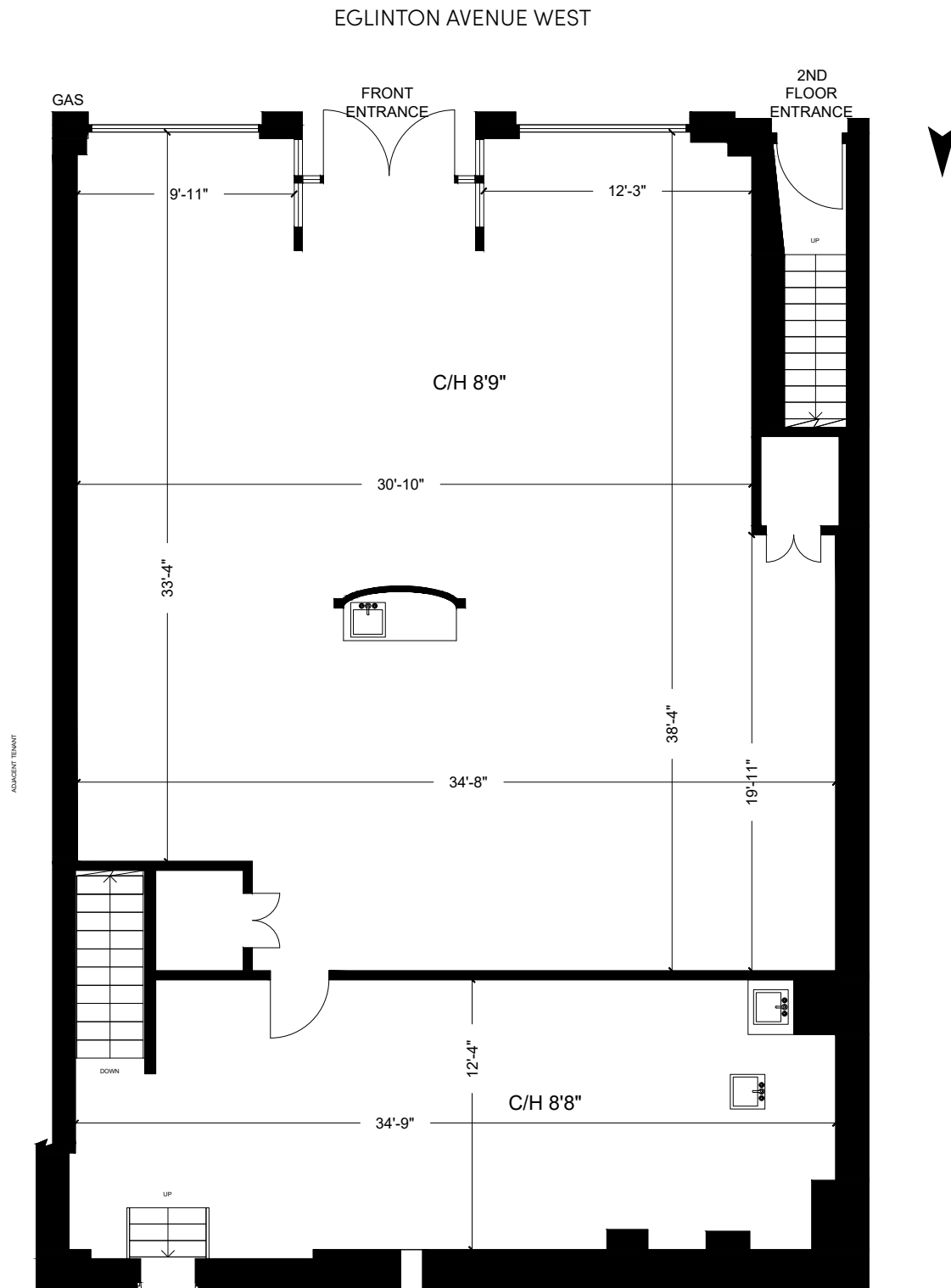
Available: TBD

- 2,000 SF retail storefront with full basement
- 37 ft of frontage with excellent exposure on Eglinton Avenue West
- Steps to Cedarvale Subway Station and directly on the Eglinton Crosstown LRT line
- Rear parking for up to 4 vehicles (tandem)
- Suitable for retail, medical, dental, food and beverage and more

 [Click for Video](#)



Ground Floor Plan
Retail Unit: +/-2,000 SF + Full Basement



Interior Images



The Location

1064 Eglinton Avenue West is surrounded by Toronto's most sought-after residential neighbourhoods. The Property itself sits in Forest Hill, one of the nation's most affluent neighbourhoods. With Wychwood, Summer Hill and Rosedale to the south-east and Lawrence Park to the north, the Property is surrounded by a wealth of Toronto's highly affluent population who prefer to live in luxurious, spacious single-family homes. These neighbourhoods have become a hub for professionals and families seeking to occupy a well-established family oriented neighbourhood while still remaining a short commute to the Financial Core.

The Property is situated in the northern end of Forest Hill along Eglinton Avenue West, in between Allen Road and Bathurst Street. Along this stretch of Eglinton you will find a number of small boutiques, art galleries, everyday essentials, restaurants and cafes including St. Urbain Bagel, Shoppers Drug Mart, Rexall, Starbucks, Dollarama, Scotiabank, Nortown Foods, Baskin Robbins and Petroff Gallery to name a few.



28,286
POPULATION



211,386
AVG. HOUSEHOLD
INCOME

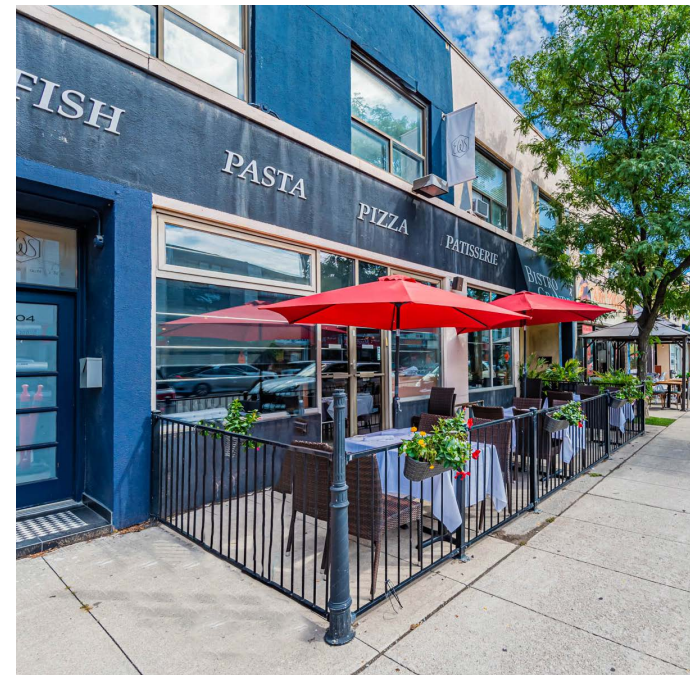


8.5%
POPULATION
CHANGE (2020-2025)

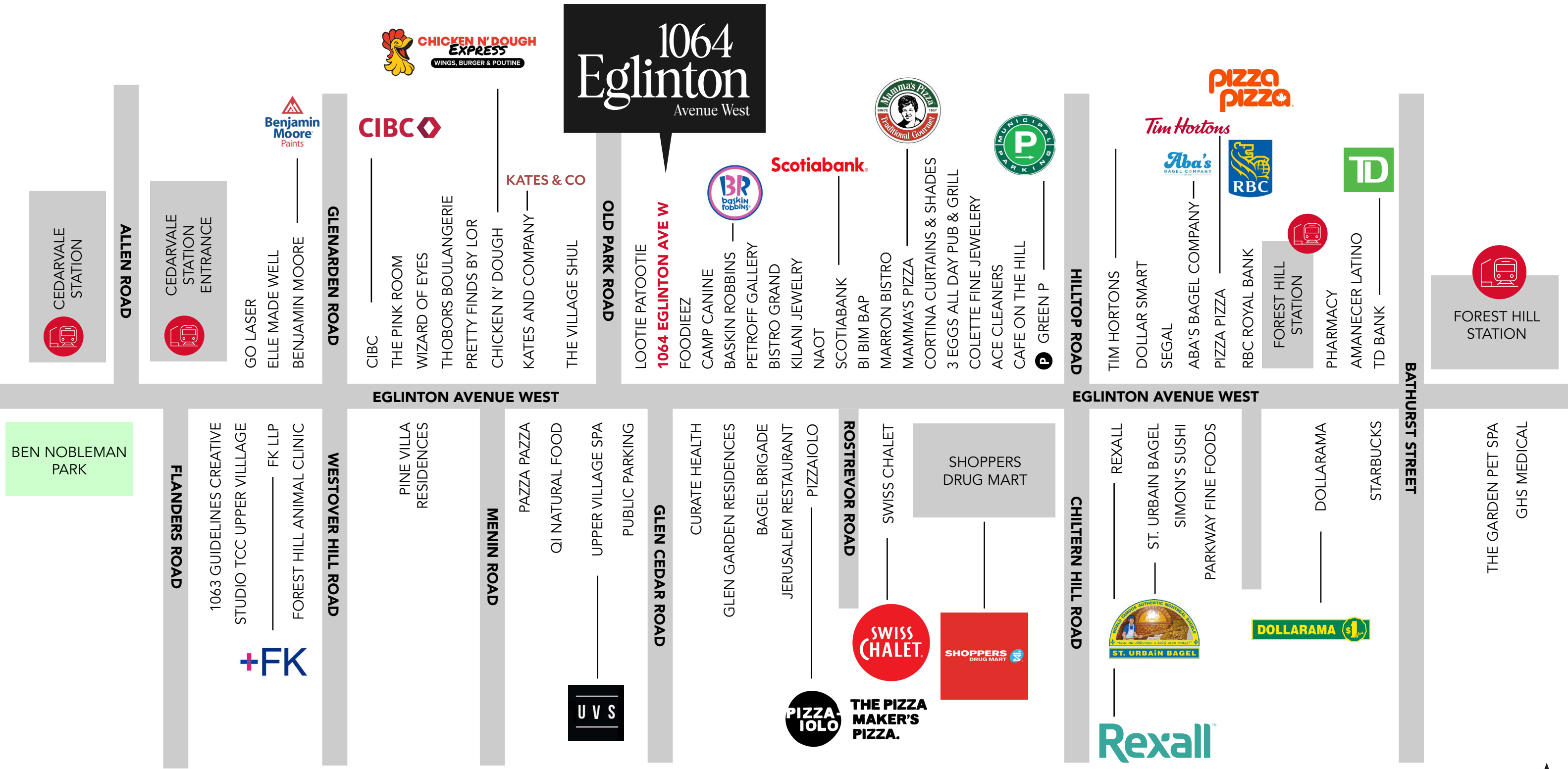


40.4
MEDIAN AGE

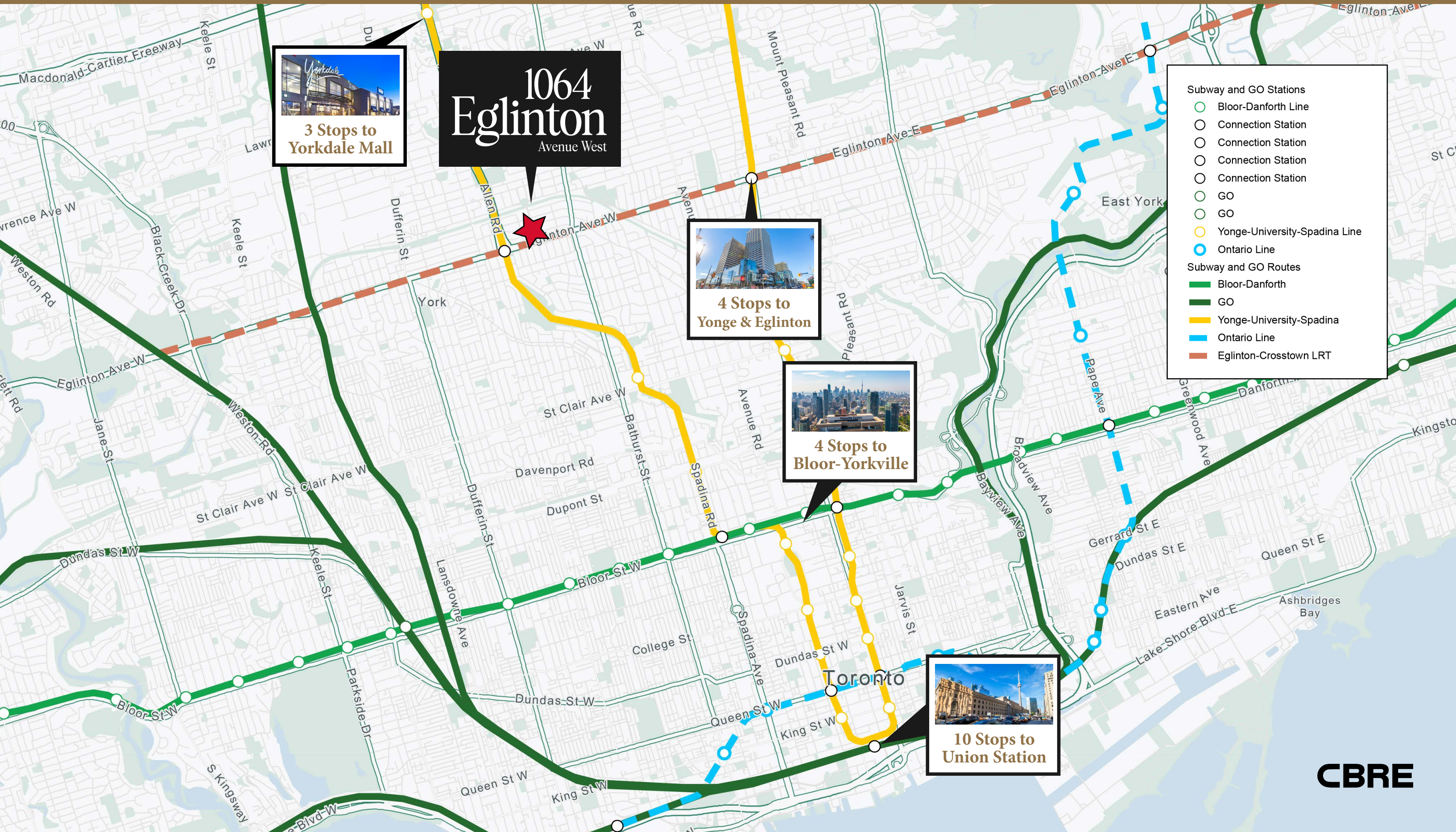
*2024 Demographics within 1km of The Property



Eglinton Avenue West Streetscape



Transit Connectivity



3 Stops to Yorkdale Mall

1064 Eglinton
Avenue West

4 Stops to Yonge & Eglinton

4 Stops to Bloor-Yorkville

10 Stops to Union Station

- Subway and GO Stations**
- Bloor-Danforth Line
 - Connection Station
 - Connection Station
 - Connection Station
 - Connection Station
 - GO
 - GO
 - Yonge-University-Spadina Line
 - Ontario Line
- Subway and GO Routes**
- Bloor-Danforth
 - GO
 - Yonge-University-Spadina
 - Ontario Line
 - Eglinton-Crosstown LRT

Vist our Instagram Page: @urbanretailteamto

Visit our website: urbanretailtoronto.com

Contact

ARLIN MARKOWITZ*
Executive Vice President
416 815 2374
arlin.markowitz@cbre.com

ALEX EDMISON*
Senior Vice President
416 874 7266
alex.edmison@cbre.com

JACKSON TURNER**
Senior Vice President
416 815 2394
jackson.turner@cbre.com

EMILY EVERETT*
Sales Associate
647 943 4185
emily.everett@cbre.com

*Sales Representative **Broker

CBRE Limited, Real Estate Brokerage

CBRE urban retail team

This disclaimer shall apply to CBRE Limited, Real Estate Brokerage, and to all other divisions of the Corporation; to include all employees and independent contractors ("CBRE"). The information set out herein, including, without limitation, any projections, images, opinions, assumptions and estimates obtained from third parties (the "Information") has not been verified by CBRE, and CBRE does not represent, warrant or guarantee the accuracy, correctness and completeness of the Information. CBRE does not accept or assume any responsibility or liability, direct or consequential, for the Information or the recipient's reliance upon the Information. The recipient of the Information should take such steps as the recipient may deem necessary to verify the Information prior to placing any reliance upon the Information. The Information may change and any property described in the Information may be withdrawn from the market at any time without notice or obligation to the recipient from CBRE. CBRE and the CBRE logo are the service marks of CBRE Limited and/or its affiliated or related companies in other countries. All other marks displayed on this document are the property of their respective owners. All Rights Reserved.