

AVISON
YOUNG



+/- 2,500 SF FOR LEASE

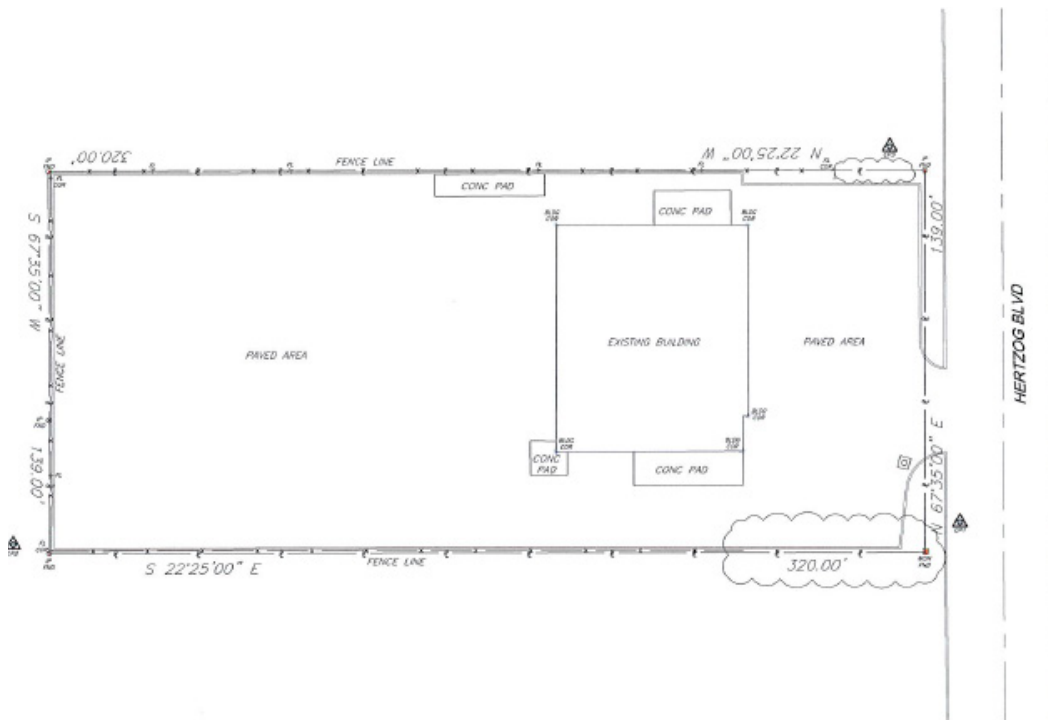
**510 Hertzog Blvd
King of Prussia, PA 19406**

Property overview

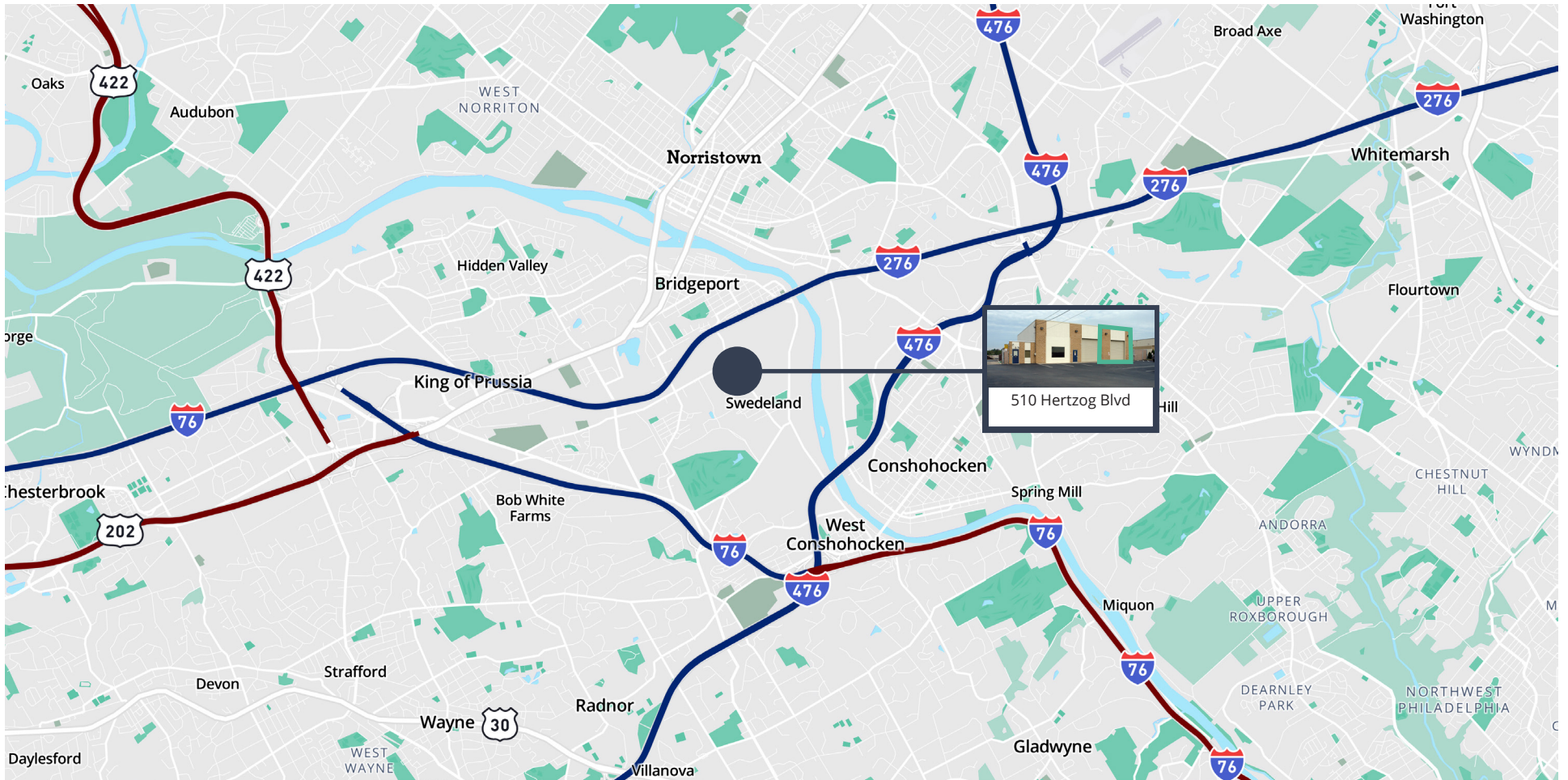
Available for lease is a $\pm 2,500$ SF space comprising half of a commercial building. The unit features one drive-in bay with an oversized 16' x 14' door, and overall dimensions of 70 feet deep by 35 feet wide. It includes access to a shared bathroom. The lease rate is \$4,000 per month, all-inclusive.

Property highlights:

- Half Building Available - +/- 2,500 SF for Lease
- 1 drive in bay
- 16' x 14' oversized doors
- 70' in depth, 35' in width
- Access to one bathroom



Local map





AVISON
YOUNG

Get more information:

David Smith

Principal

484-889-8491

david.smith@avisonyoung.com

Will Ciarlone

Associate

609 314 4864

will.ciarlone@avisonyoung.com

Avison Young – Philadelphia, LLC | 300 Barr Harbor Drive, Suite 150, Conshohocken, PA 19428 | 610.276.1080

© 2025. Avison Young. Information contained herein was obtained from sources deemed reliable and, while thought to be correct, have not been verified. Avison Young does not guarantee the accuracy or completeness of the information presented, nor assumes any responsibility or liability for any errors or omissions therein.