

BERKELEY OFFICE TO LEASE



1919 ADDISON STREET BERKELEY CA 94704

University Walk is a quiet garden office complex.

A short walk to [BART](#). Floor plans follow:

- [Suite 102](#) - ±2100 SF: \$2.75 PSF + IG
- [Suite 105](#) - ±2420 SF: \$2.50 PSF + IG
- [Suite 206](#) - ±1822 SF: \$2.50 PSF + IG
- [Suite 304](#) - ±2335 SF: \$2.50 PSF + IG
- [Suite 306](#) - ±1430 SF: \$2.50 PSF + IG



Matt Gondak

510-450-1434

mgondak@mrecommercial.com

CA DRE No: 00832220



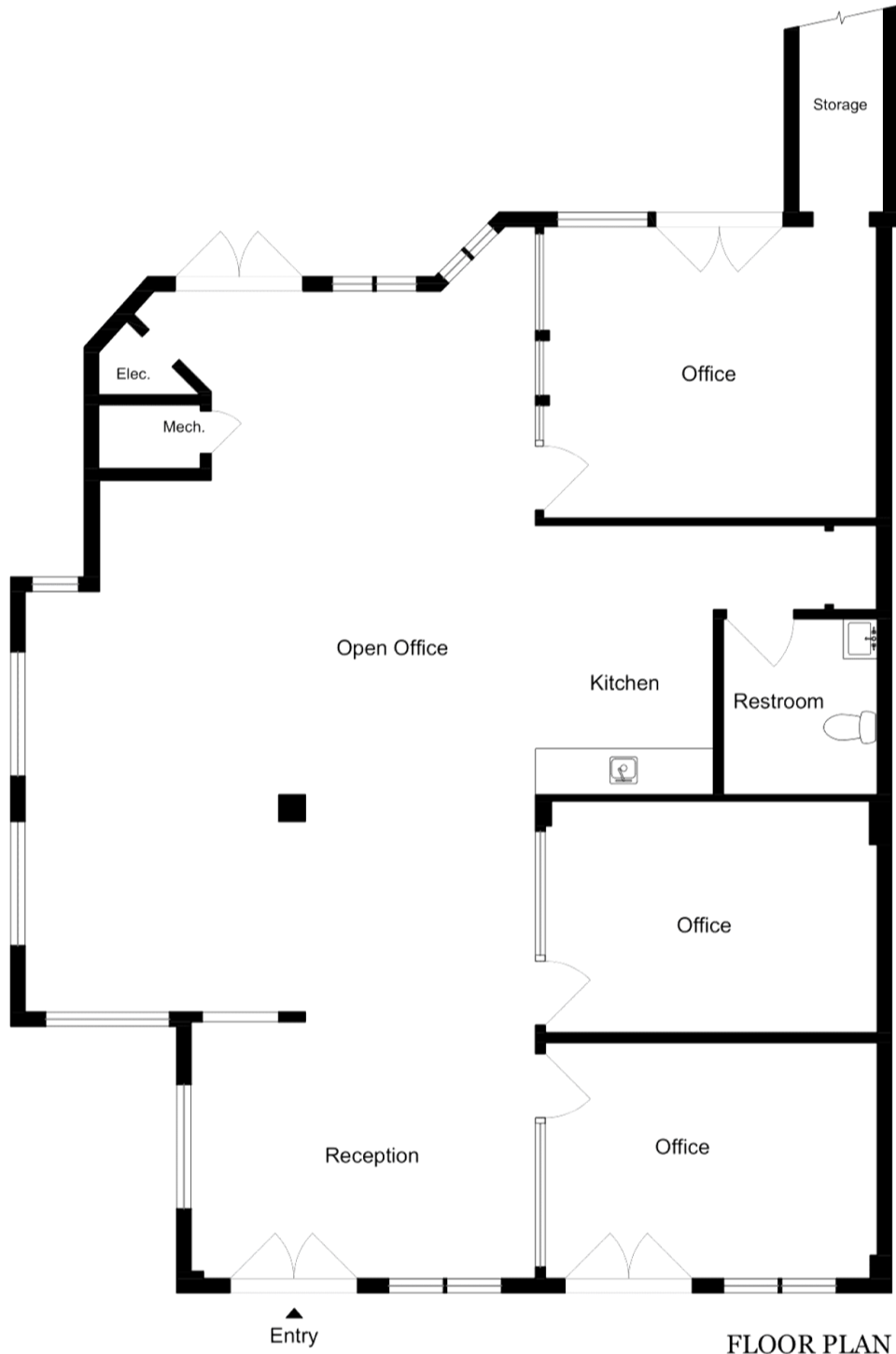
All information herein is offered in good faith and deemed accurate, but not guaranteed.



COMMERCIAL
REAL ESTATE

1919 ADDISON STREET | SUITE 102

BERKELEY, CA 94704

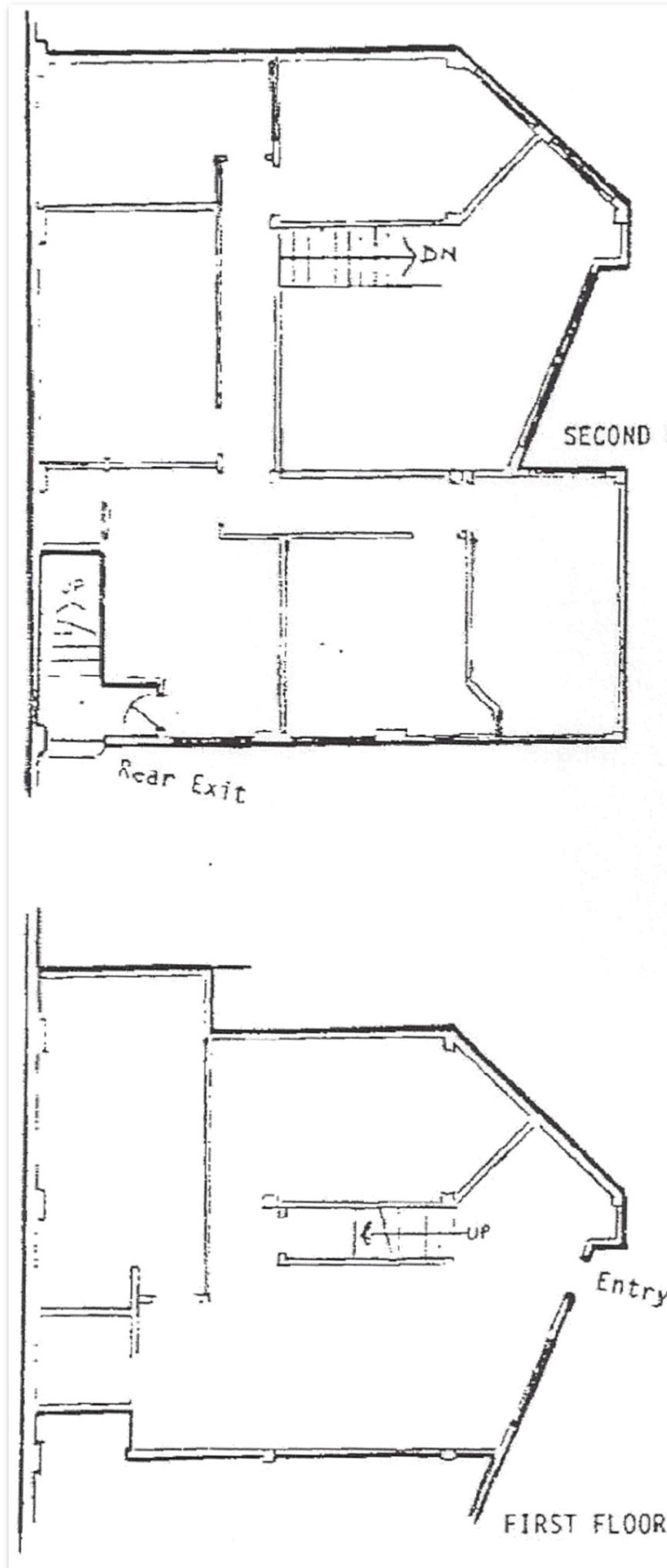


FLOOR PLAN

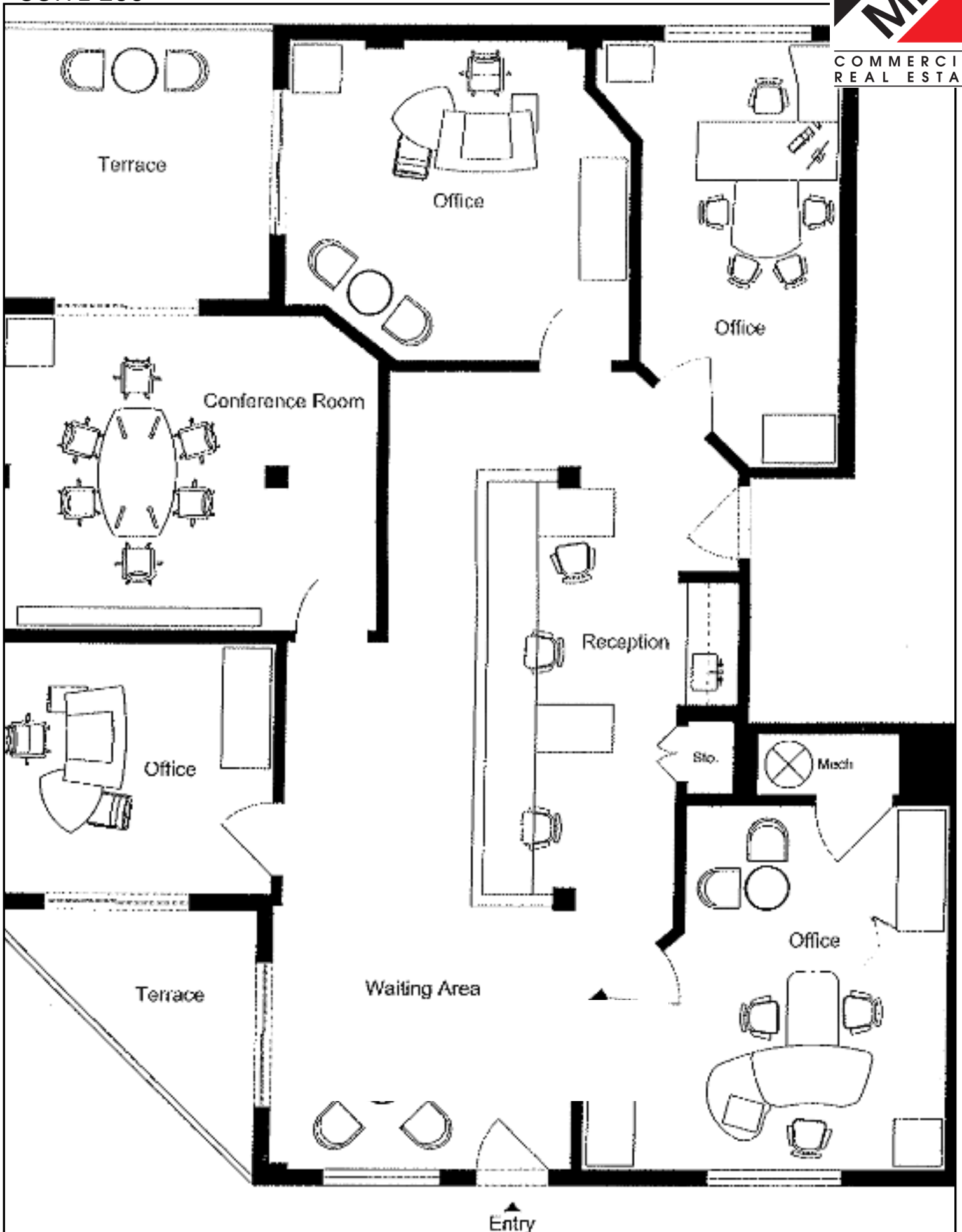
floor plan | visuals
www.fpvisuals.com
415.670.9265

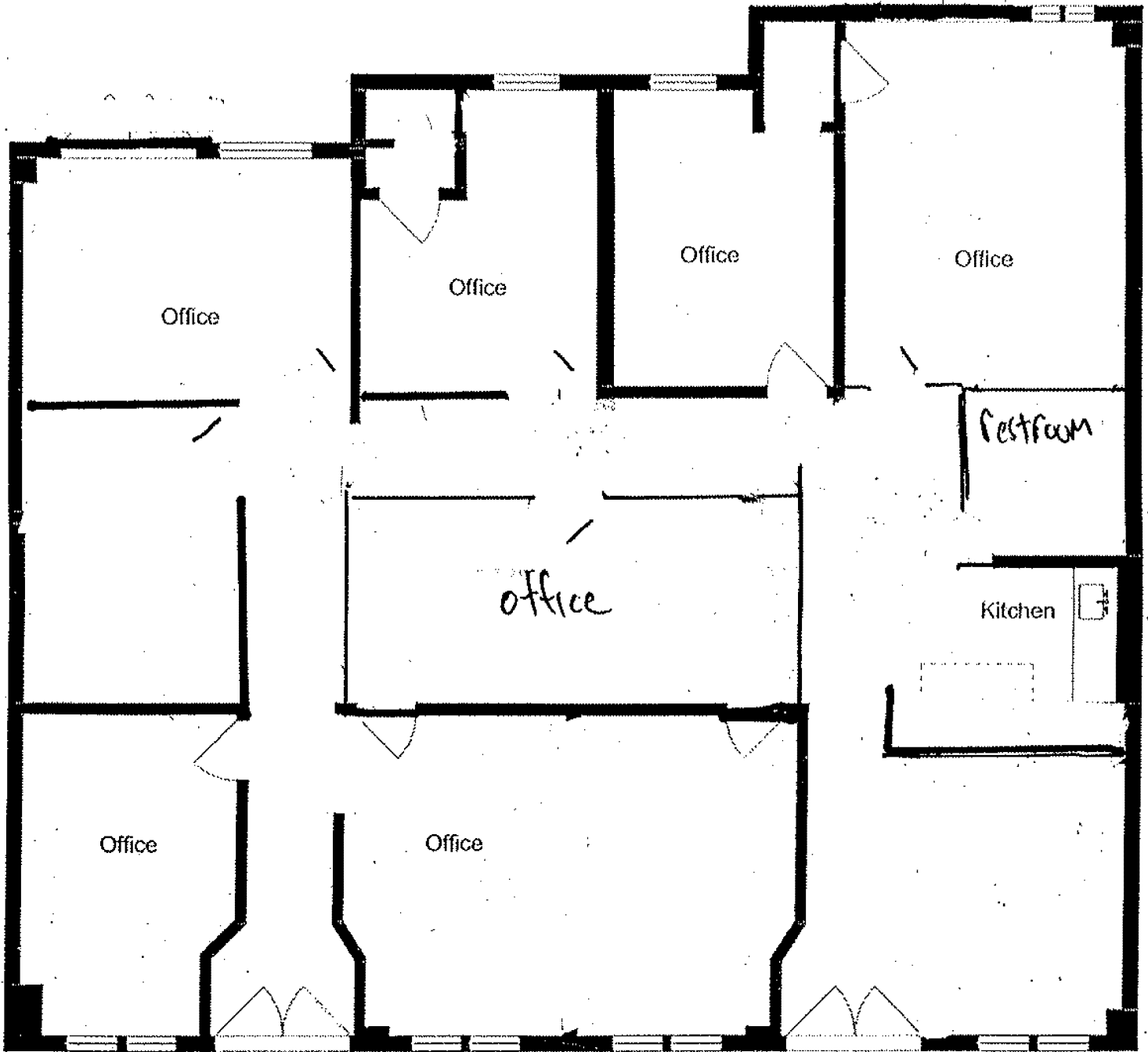
All measurements are approximate.
While deemed reliable, no information
on these floor plans should be relied
upon without independent verification.

SUITE 105

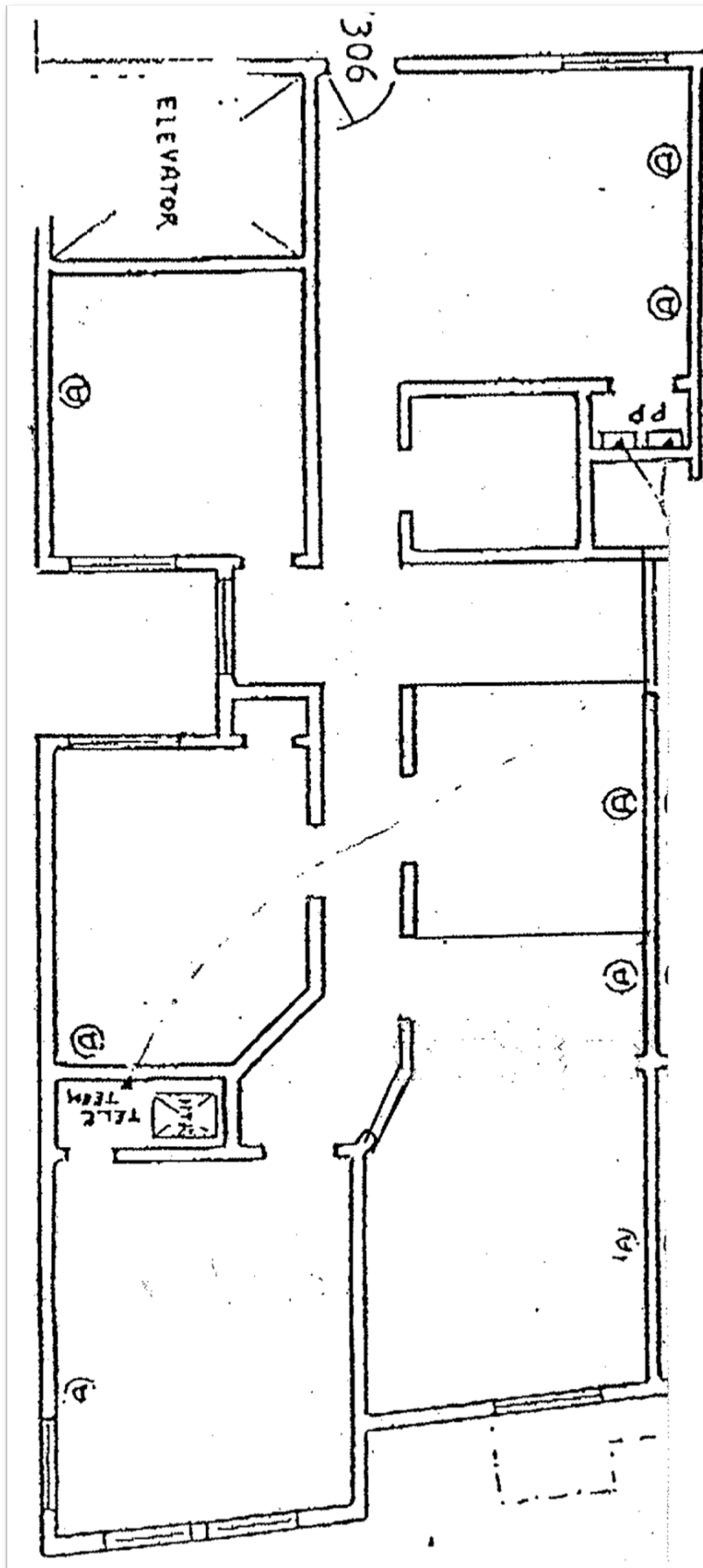


SUITE 206





SUITE 306



AERIAL

