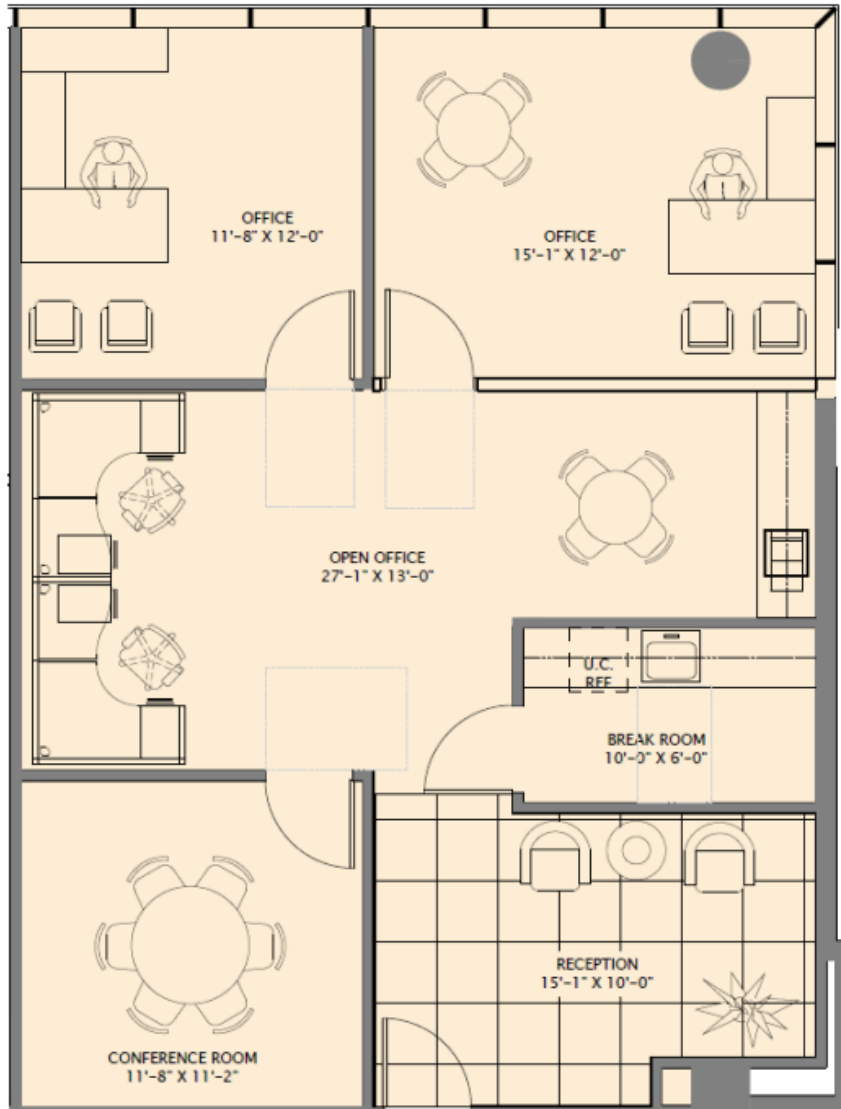




# RADICE II

800 Corporate Drive



## Suite 208 – 1,182 sf Spec Suite

For more information, please contact:

**DEANNA LOBINSKY**  
Executive Director  
+1 954 377 0489  
[deanna.lobinsky@cushwake.com](mailto:deanna.lobinsky@cushwake.com)

**CHASE KULP**  
Senior Associate  
+1 954 377 0494  
[chase.kulp@cushwake.com](mailto:chase.kulp@cushwake.com)

**CUSHMAN & WAKEFIELD OF FLORIDA, LLC**  
515 E. Las Olas Boulevard, Suite 900  
Fort Lauderdale, FL 33301  
[cushmanwakefield.com](http://cushmanwakefield.com)