



St. James Tower, 7 Charlotte Street, Manchester, M1 4DZ

Serviced office spaces TO LET

- City/Town Centre
- Meeting Rooms
- Common Areas
- Major Transport Links
- [///curvy.drove.bared](https://www.curvydrove.com)

Summary

Available Size	1 to 18,875 sq ft
Rent	£143 per month
Business Rates	Upon Enquiry
EPC Rating	Upon enquiry

Description

Your working day just got easier at St James's Tower, right in the centre of Manchester. Watch your productivity soar when you base your business in a prime spot to spark ideas and relationships. Find the flexible, fully-equipped space to suit your business needs, across four floors flooded with natural light- whether you are looking for private offices, communal spaces to brainstorm your next big idea or to hire a meeting room in Manchester. Be inspired by our buzzing community of like-minded entrepreneurs as you network in our lounges.

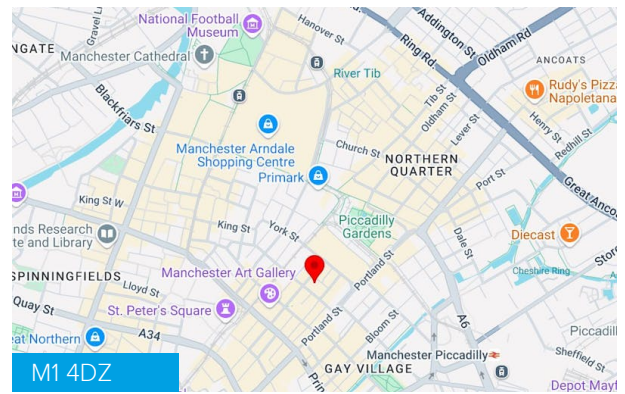
Plug into our superfast-WiFi connection and call upon the support of our friendly and professional team to help your day go more smoothly. Step outside and you are surrounded by everything a vibrant city like Manchester has to offer.

Location

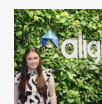
St James Tower is located in the City Centre of Manchester. Transport links are excellent with George Street bus stop (1 Free Bus) a 1 minute walk away. Access to Piccadilly Gardens tram stop is 0.3-miles away, providing access in and around the city with bars and restaurants within walking distance.

The A6 can be accessed from the South East of the site which connects to the M60. The A57 can be accessed from the South of the site, providing access to the M1 North and South, offering wider linkages to large cities such as Leeds, Edinburgh and London.

Manchester Airport is 9.2 miles South of the site.



Viewing & Further Information



Caitlin Parker

01609 797 330

caitlin.parker@alignpropertypartners.co.uk

View Properties Here
www.alignpropertypartners.co.uk

