

A CREATIVE CAMPUS FOR NEXT-GEN MAKERS

HOLLYWOOD
MEDIA CAMPUS



1017 N LAS PALMAS OFFICE/POST-PRODUCTION

AVAILABLE NOW

SIZE

1ST FLOOR: 17,094 RSF
2ND FLOOR: 25,126 RSF
3RD FLOOR: 25,131 RSF

CEILING HEIGHT

12' - 15'2"
10'6" - 12'6"
12'6" - 14'6"

TOTAL: 67,351 RSF

1017 N LAS PALMAS SOUNDSTAGES

AVAILABLE JAN 1, 2027

SIZE

1ST FLOOR: 21,063 RSF

CEILING HEIGHT

14'6" - 35'

6700 SANTA MONICA CREATIVE OFFICE

AVAILABLE JAN 1, 2027

SIZE

1ST FLOOR: 10,550 RSF
2ND FLOOR: 9,128 RSF

TOTAL: 19,678 RSF

TOTAL BUILDING SIZE: 108,092 SF

CALL BROKER FOR LEASE TERMS AND ASKING RATE //////////////////////////////////////

BUILDING HIGHLIGHTS

- BOUTIQUE, STAND-ALONE CREATIVE CAMPUS IN THE HEART OF HOLLYWOOD
- INTERCONNECTING STAIRCASE BETWEEN 2ND AND 3RD FLOOR OF 1017 N LAS PALMAS
- HIGH END OPEN KITCHEN CONCEPT ON EACH FLOOR
- GATED, SECURE CAMPUS
- EQUIPPED WITH EDIT BAYS, COLOR/VO/AUDIO BAYS
- LARGE SCREENING ROOM WITH 44 SEATS
- FIVE (5) DOCK HIGH LOADING DOORS ON GROUND FLOOR
- PRIVATE BALCONY ON TOP FLOOR



SUNSET LAS PALMAS STUDIOS

1017 N LAS PALMAS
| OFFICE AND POST PRODUCTION

SOUND STAGE

GATED ENTRYWAY

GATED ENTRYWAY

6700 SANTA MONICA BLVD | BOUTIQUE, CREATIVE OFFICE

PROPERTY DETAILS

HOLLYWOOD MEDIA CAMPUS

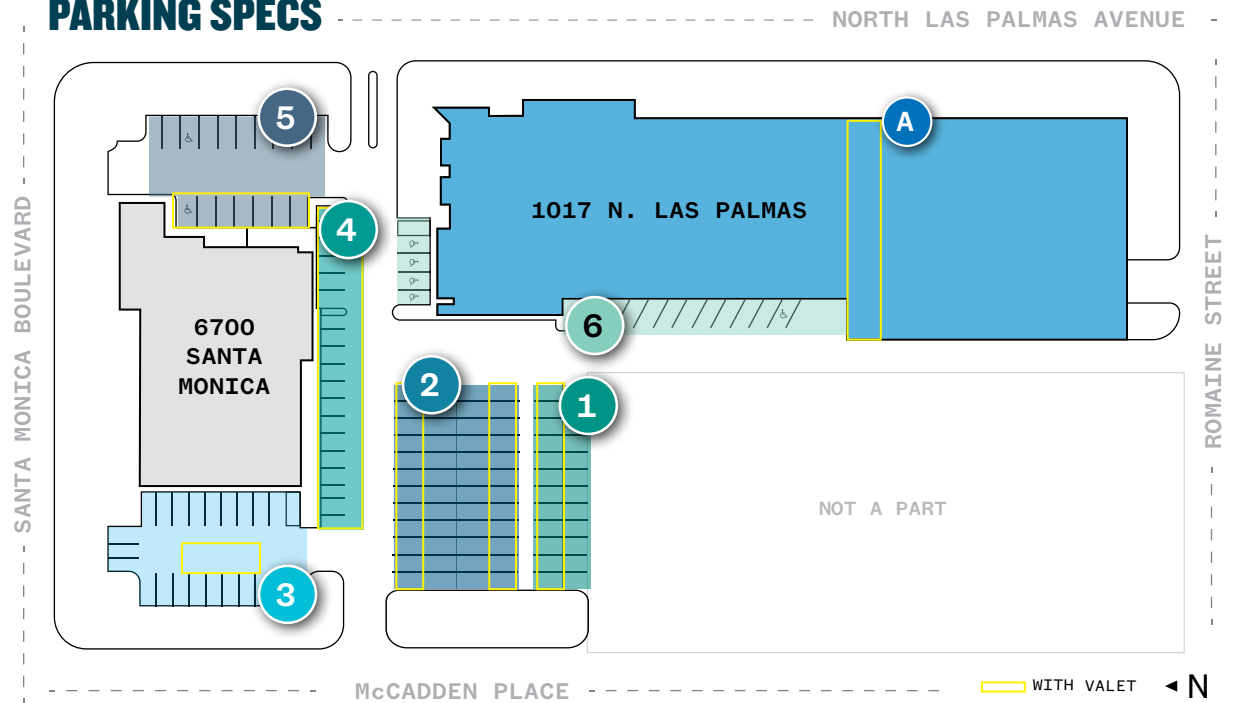
BUILDING SPECS

BUILDING SIZE:	108,092 SF
SITE AREA:	2.973 ACRES
YEAR BUILT:	6700 SANTA MONICA BLVD – ENTRYWAY: 1929, REMAINDER: 1987 1017 N LAS PALMAS AVE – 1994 FULLY RENOVATED IN 2014
CEILING HEIGHT:	12'5" - 35'
APN:	5532026005 (NORTHWEST LOT) 5532026023 (6700 SANTA MONICA) 5532026031 (CENTER LOT) 5532026032 (CENTER LOT) 5532026033 (CENTER LOT) 5532026036 (1017 N PALMAS)
ZONING:	MR1-1-SN RESTRICTED INDUSTRIAL ZONE
MAX FAR:	1.5 (1.13 EXISTING)

STAGE SPECS

POWER LOAD:	2,000 AMPS @ 277/480 VOLTS, 3-PHASE, 4-WIRE SERVICE
A/C CAPACITY:	2 LARGE TRANE PACKAGE UNITS w/ CAPACITY OF 50 AND 60 TONS
HEIGHT-TO-GRID:	20-25'
CEILING HEIGHT:	UP TO 35'
COLUMNLESS DIMENSIONS:	15,000 SF

PARKING SPECS

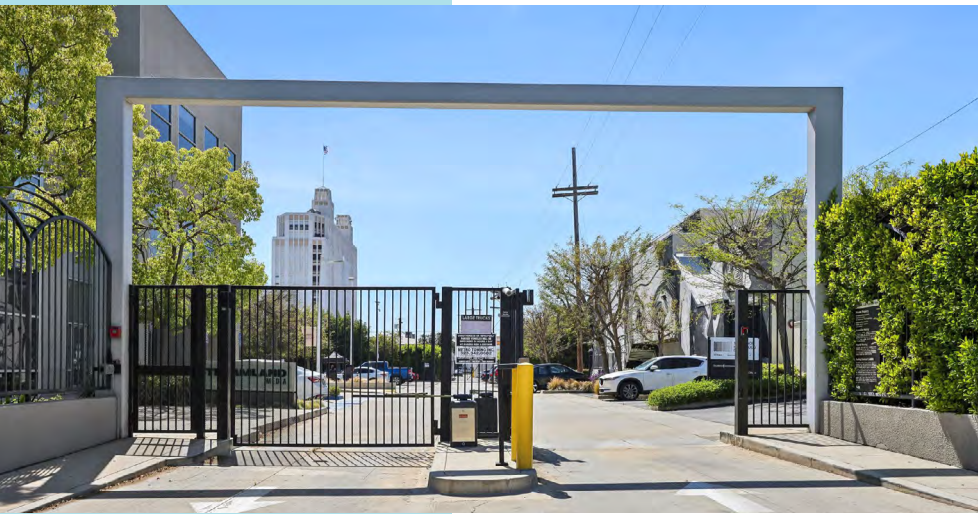


	STRIPED	STACKED/TANDEM	TOTAL
EXTERIOR			
1 - SOUTH	13	16	29
2 - CENTER	24	24	48
3 - NORTHWEST	26	11	37
4 - CENTER STRIP	22	7	29
5 - NORTHEAST	11	5	16
6 - 1017 PERIMETER	19	N/A	19
TOTAL EXTERIOR	115	63	178
INTERIOR			
A - GARAGE	91	24	115
TOTAL PARKING	206	87	293

HOLLYWOOD
MEDIA CAMPUS

**PUT YOURSELF
ON DISPLAY**

SIGNAGE OPPORTUNITIES INCLUDING
CAMPUS ENTRANCE ARCH, BUILDING TOP,
+ MONUMENT



ENERGY-FILLED NEIGHBORHOOD

DISCOVER
HOLLYWOOD

**EXCEPTIONAL ACCESS
TO GREATER L.A.**

FOOD

RAO'S
TARTINE SYCAMORE
SIGHTGLASS COFFEE
GIGI'S
MAMA SHELTER
TAO
KATSUYA
TENDER GREENS
STARBUCKS
GO GET EM TIGER
FORMOSA CAFE

ROOFTOP DINING @ MAMA SHELTER



ENTERTAINMENT

TCL CHINESE THEATRE
HOLLYWOOD FOREVER
DOLBY THEATRE
HOLLYWOOD BOWL
UNIVERSAL STUDIOS
HOLLYWOOD PANTAGES

LIVE MUSIC @
HOLLYWOOD BOWL



PILATES @ [SOLIDCORE]

NECESSITIES

MOTHER'S
TARGET
BESTBUY
SPROUTS
RALPHS

3 MINS

FROM THE
SYCAMORE DISTRICT

5 MINS

FROM WEST HOLLYWOOD +
LARCHMONT VILLAGE

7 MINS

FROM THE
SUNSET STRIP

15 MINS

FROM FROGTOWN

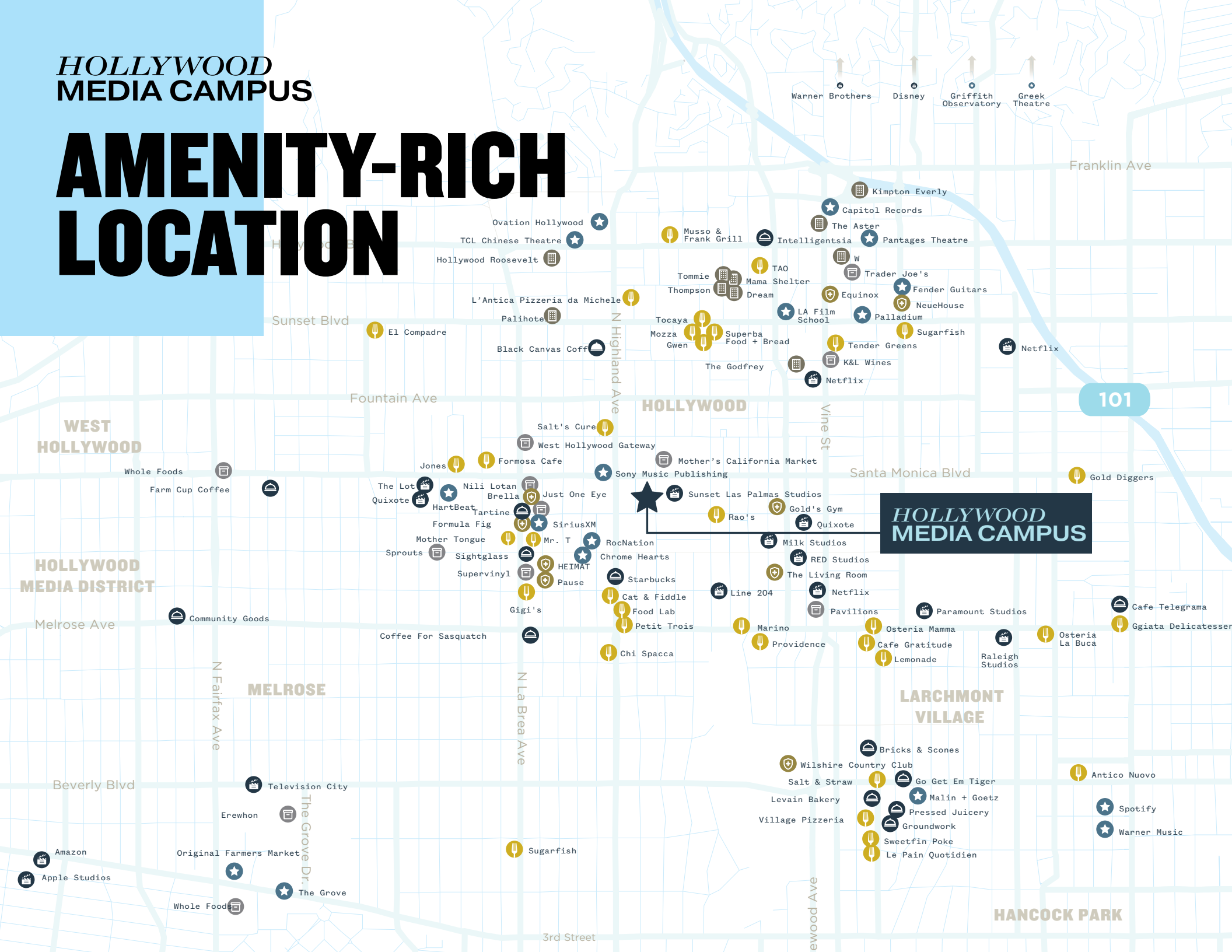
5 MINS

FROM DOWNTOWN LA,
BEVERLY HILLS + BURBANK

**HOLLYWOOD
MEDIA CAMPUS**

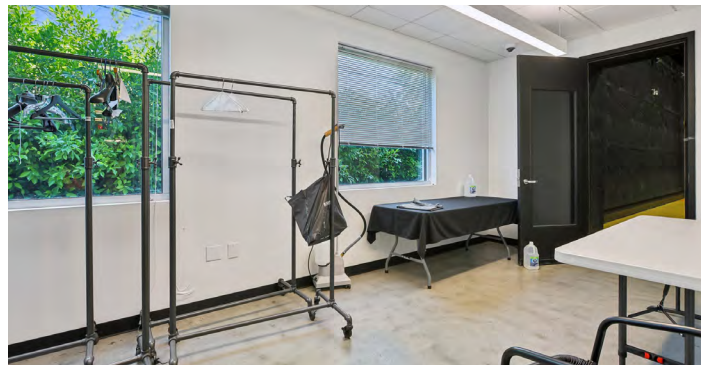
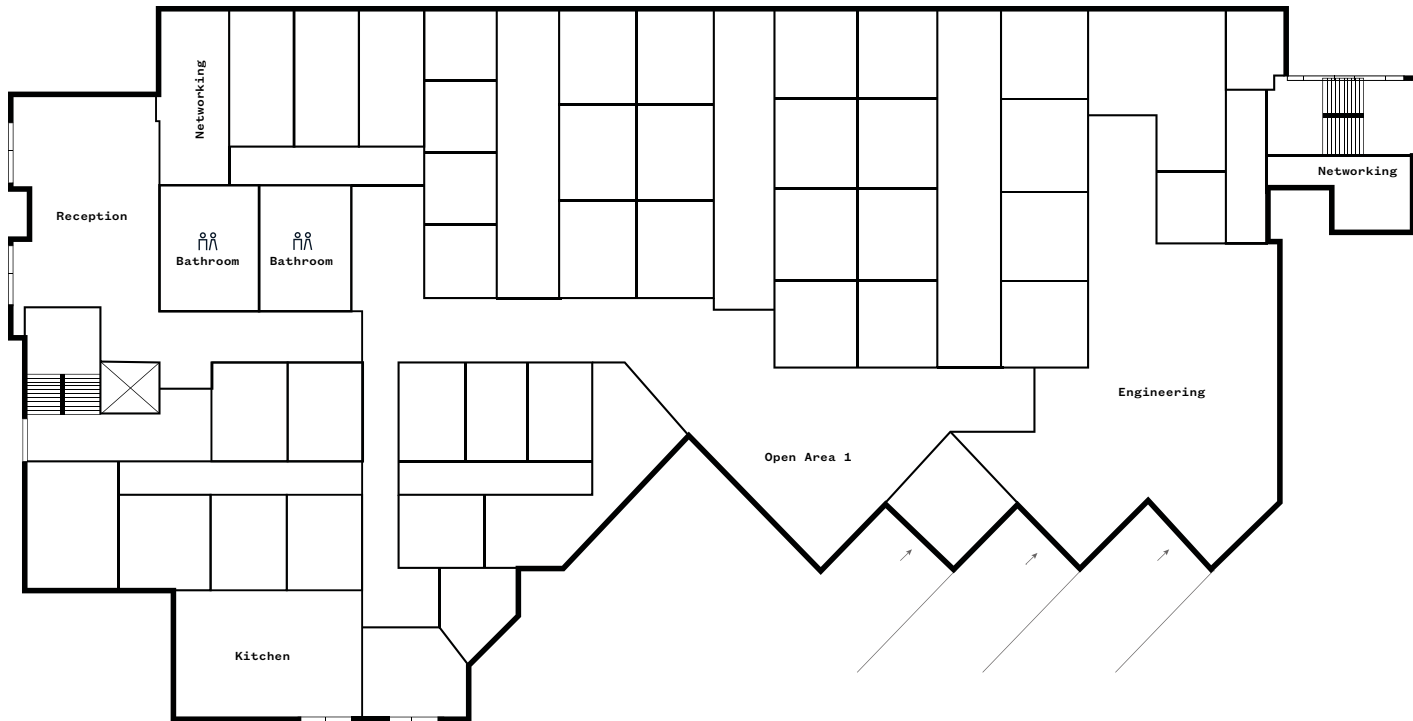
HOLLYWOOD MEDIA CAMPUS

AMENITY-RICH LOCATION



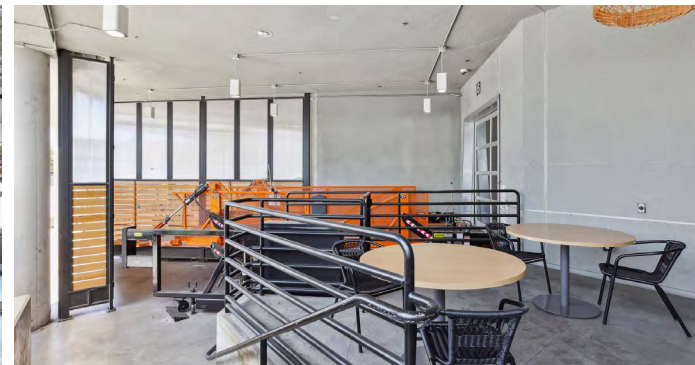
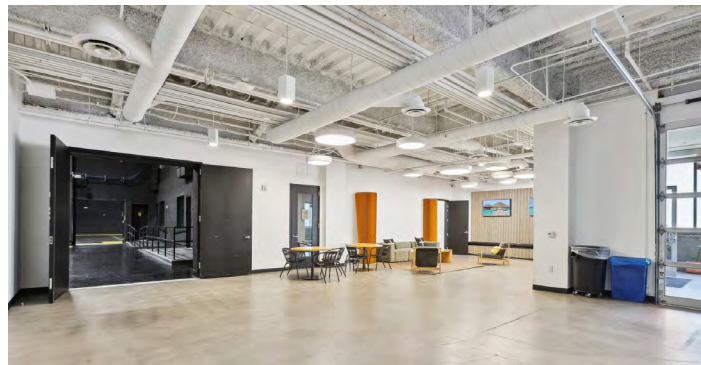
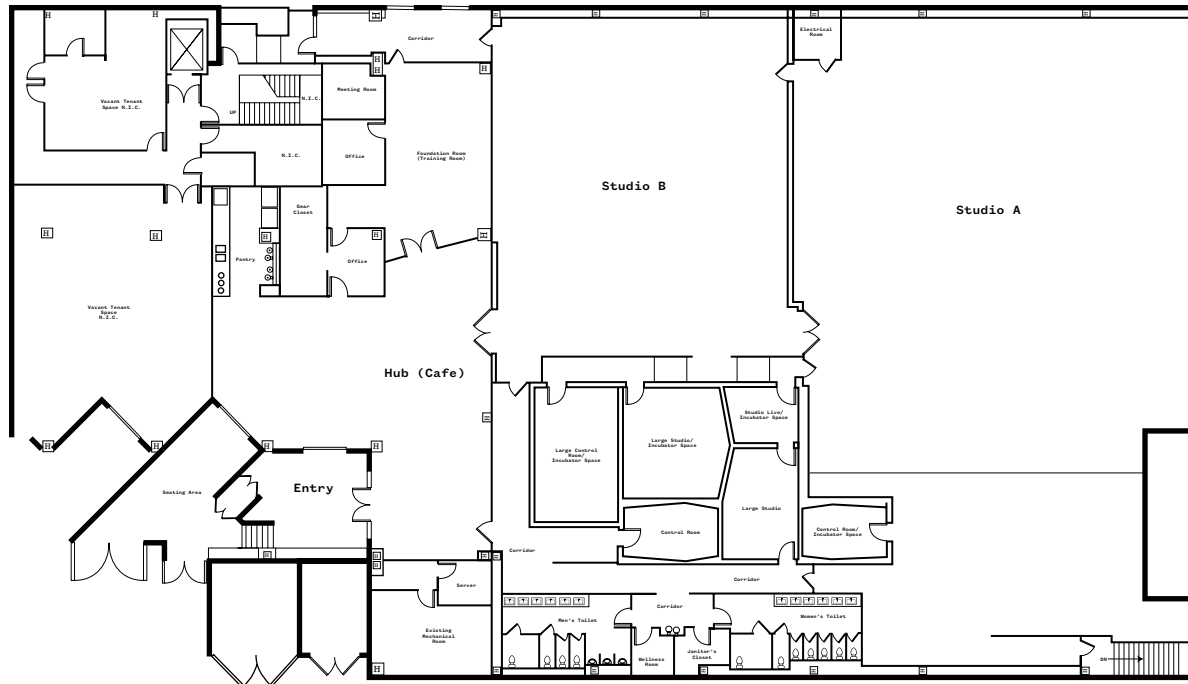
1017 N LAS PALMAS

1ST LEVEL | 17,094 RSF | AVAILABLE NOW



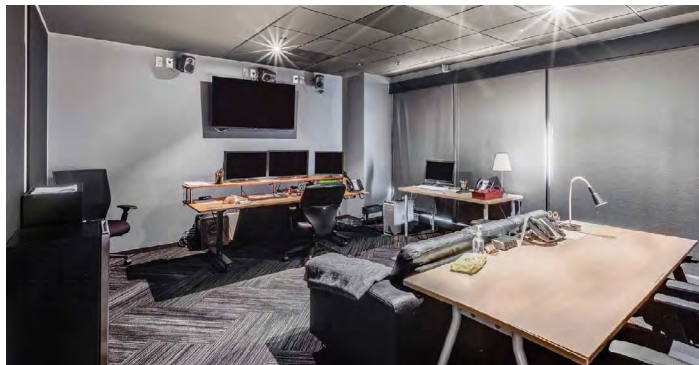
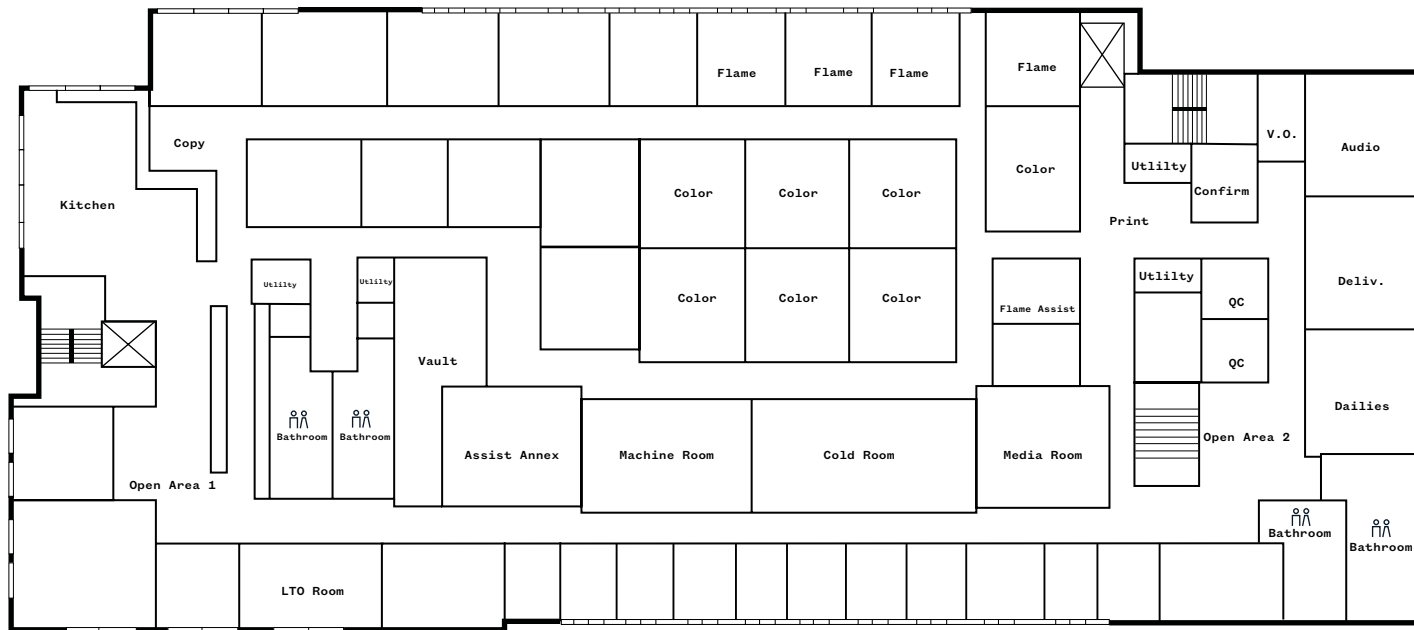
1017 N LAS PALMAS (SOUNDSTAGES)

1ST LEVEL | 21,063 RSF | AVAILABLE JAN 1, 2027



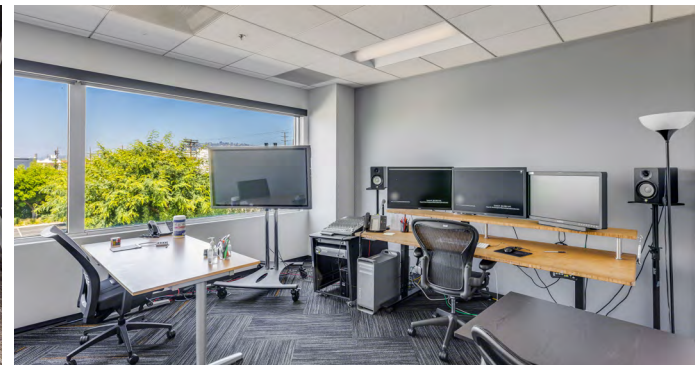
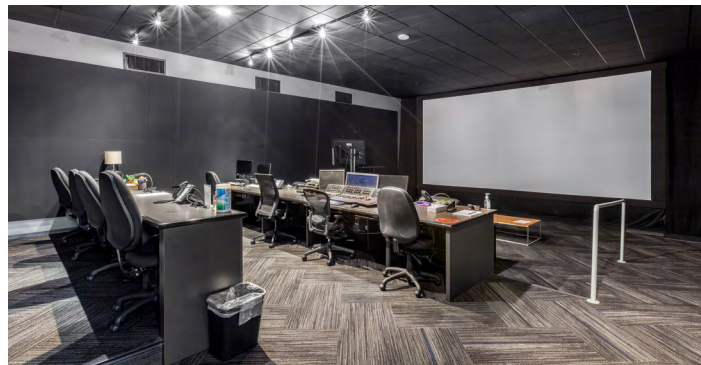
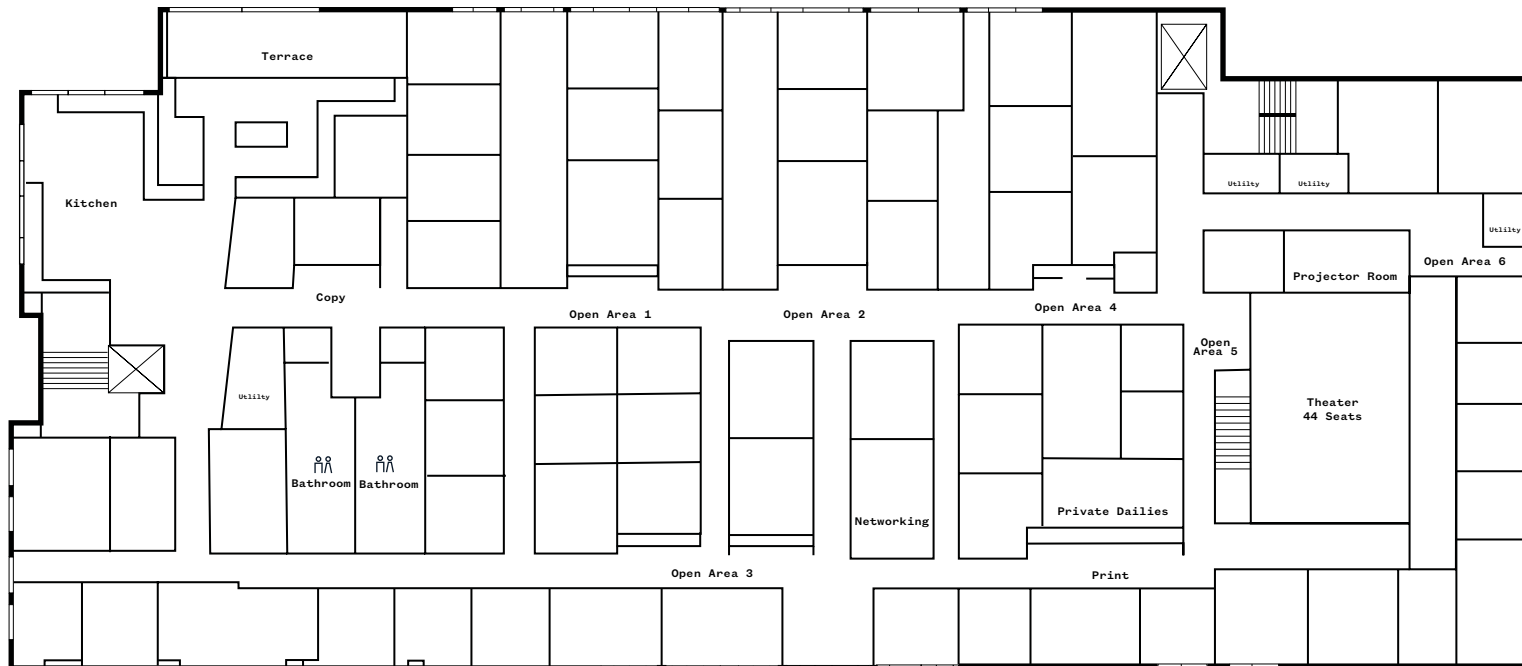
1017 N LAS PALMAS

2ND LEVEL | 25,126 RSF | AVAILABLE NOW



1017 N LAS PALMAS

3RD LEVEL | 25,131 RSF | AVAILABLE NOW

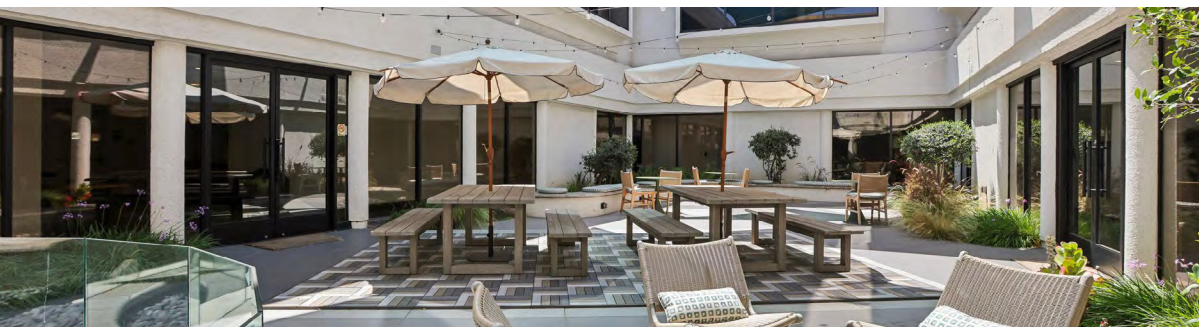
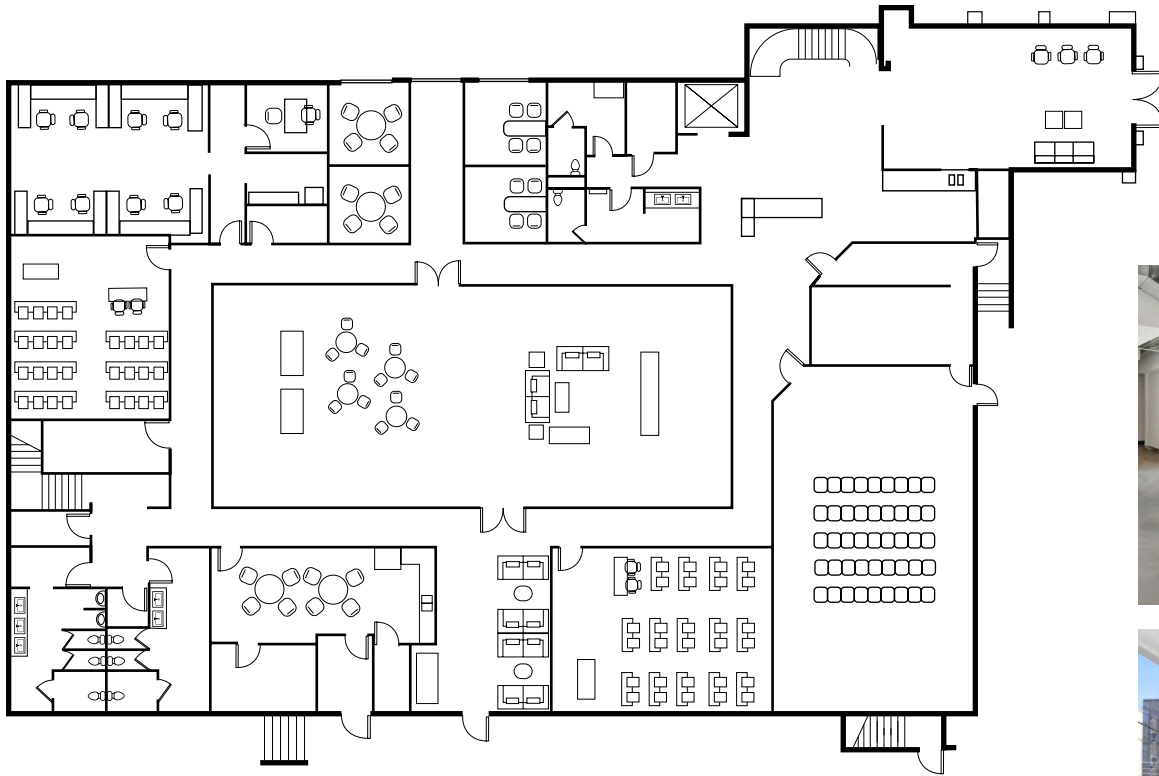


HOLLYWOOD
MEDIA CAMPUS



6700 SANTA MONICA BLVD

1ST LEVEL | 10,550 RSF | AVAILABLE JAN 1, 2027

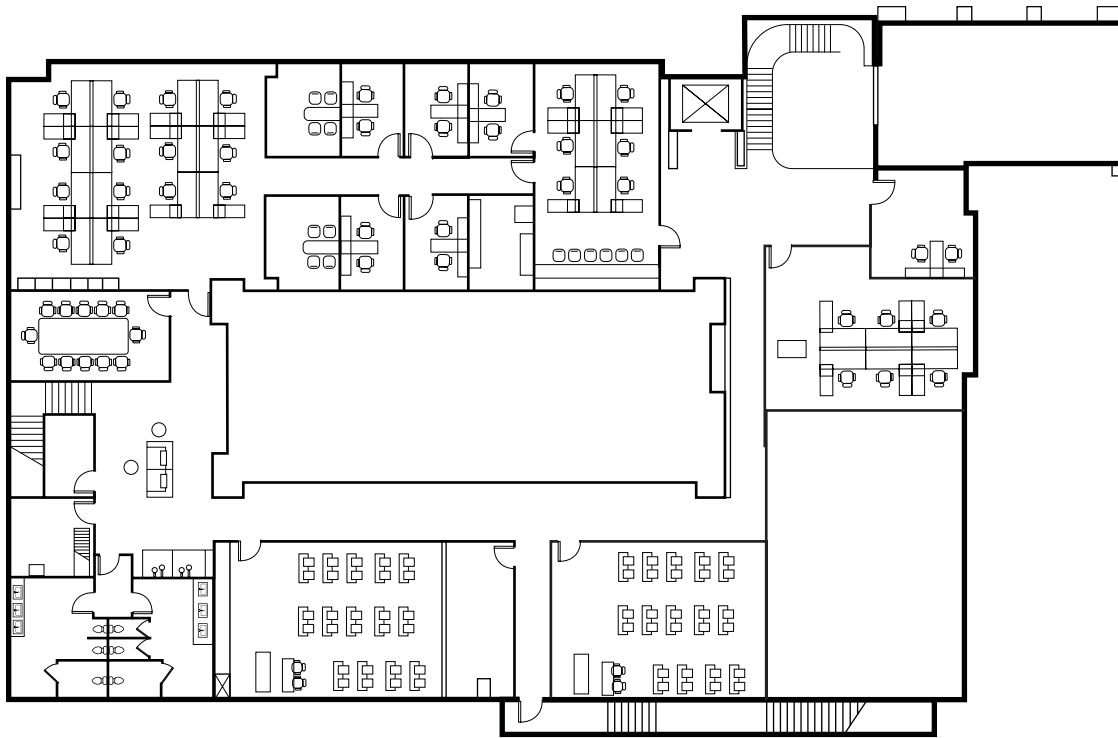


HOLLYWOOD
MEDIA CAMPUS



6700 SANTA MONICA BLVD

2ND LEVEL | 9,128 RSF | AVAILABLE JAN 1, 2027





**HOLLYWOOD
MEDIA CAMPUS** 

6700 SANTA MONICA BLVD +
1017 N LAS PALMAS AVE.,
LOS ANGELES, CA 90038

GET IN TOUCH

NICOLE MIHALKA
Managing Director
213 239 6076
nicole.mihalka@jll.com
RE license #01322414

HAYLEY BLOCKLEY
Managing Director
213 239 6054
hayley.blockley@jll.com
RE license #01781682

PETER HAJIMIHALIS
Managing Director
213 239 6399
peter.hajimihalis@jll.com
RE license # 01994663

Although information has been obtained from sources deemed reliable, JLL does not make any guarantees, warranties or representations, express or implied, as to the completeness or accuracy as to the information contained herein. Any projections, opinions, assumptions or estimates used are for example only. There may be differences between projected and actual results, and those differences may be material. JLL does not accept any liability for any loss or damage suffered by any party resulting from reliance on this information. If the recipient of this information has signed a confidentiality agreement with JLL regarding this matter, this information is subject to the terms of that agreement. ©2024 Jones Lang LaSalle Brokerage, Inc. All rights reserved.