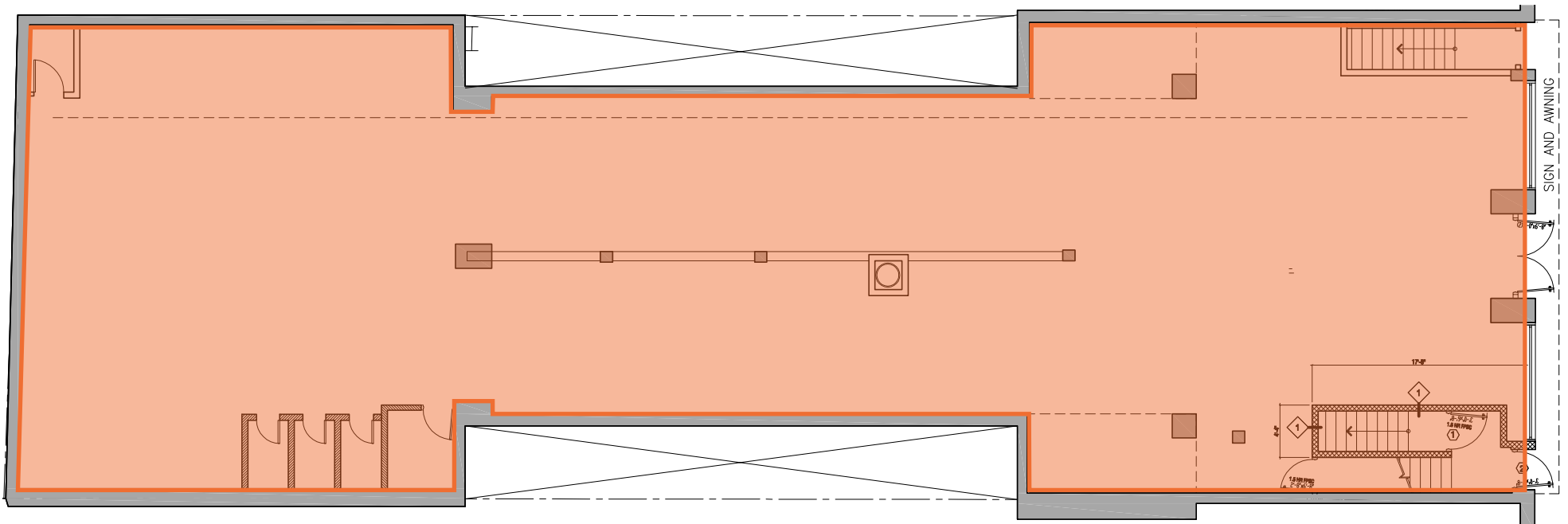


1019 Southern Blvd

Between 163rd & Westchester Ave | Longwood

Floor Plan:
Ground Floor - 4,400 SF

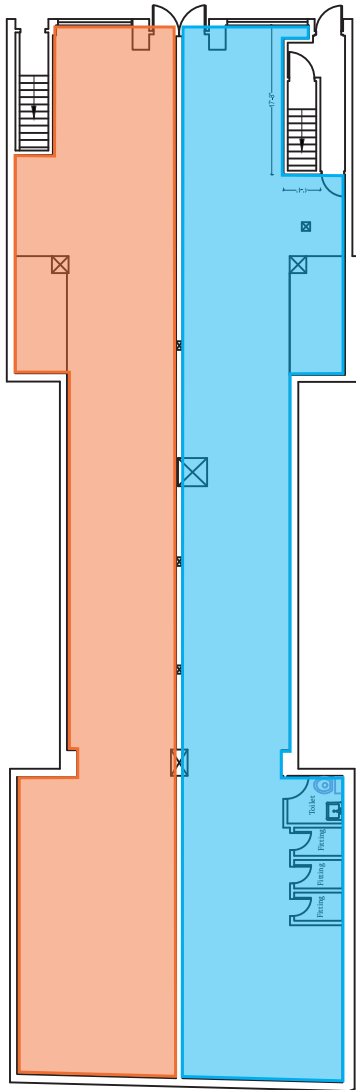


All information supplied in this marketing presentation and/or flyer is from sources deemed reliable and is furnished subject to errors, omissions, modifications, removal of listings from sale/lease and to any listing condition. Any square footage, dimensions, floor plans and/or technical data set forth are approximations and are subject to further elaboration/confirmation.

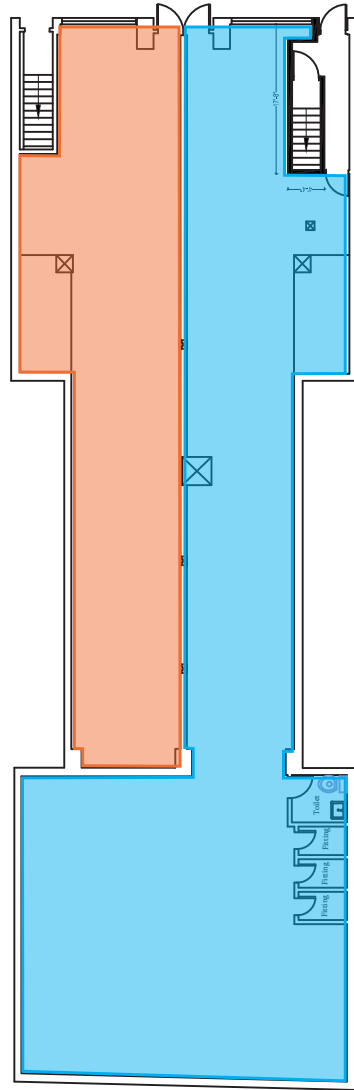
1019 Southern Blvd

Between 163rd & Westchester Ave | Longwood

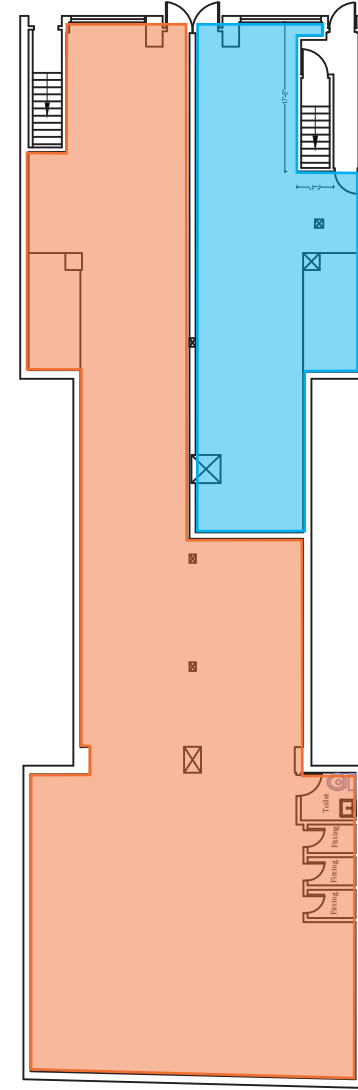
Floor Plan: Potential Divisions



Option 1:
■ 2,200 SF
■ 2,200 SF



Option 2:
■ 1,700 SF
■ 2,700 SF



Option 3:
■ 3,200 SF
■ 1,200 SF