

FOR SUBLEASE

200 SPECTRUM CENTER

*Suite 1400 - Office Space
Available for Sublease in Irvine*

IRVINE, CA 92618

KIDDER.COM

 **Kidder
Mathews**

200 SPECTRUM CENTER



GREAT FREEWAY
ACCESS WITHIN
THE HEART OF
IRVINE SPECTRUM



AMAZING 360°
VIEWS WITH
FLOOR TO CEILING
WINDOWS



PLUG AND PLAY
OFFICE SPACE
WITH UPSCALE
FURNITURE



IMPRESSIVE
OUTDOOR
COLLABORATIVE
SPACE



*Contemporary on-site conveniences
make 200 Spectrum Center the ultimate
workplace for busy professionals.*



EV CHARGING
STATIONS AND
CAR DETAILING
SERVICE



VERSATILE
CONFERENCE
CENTER

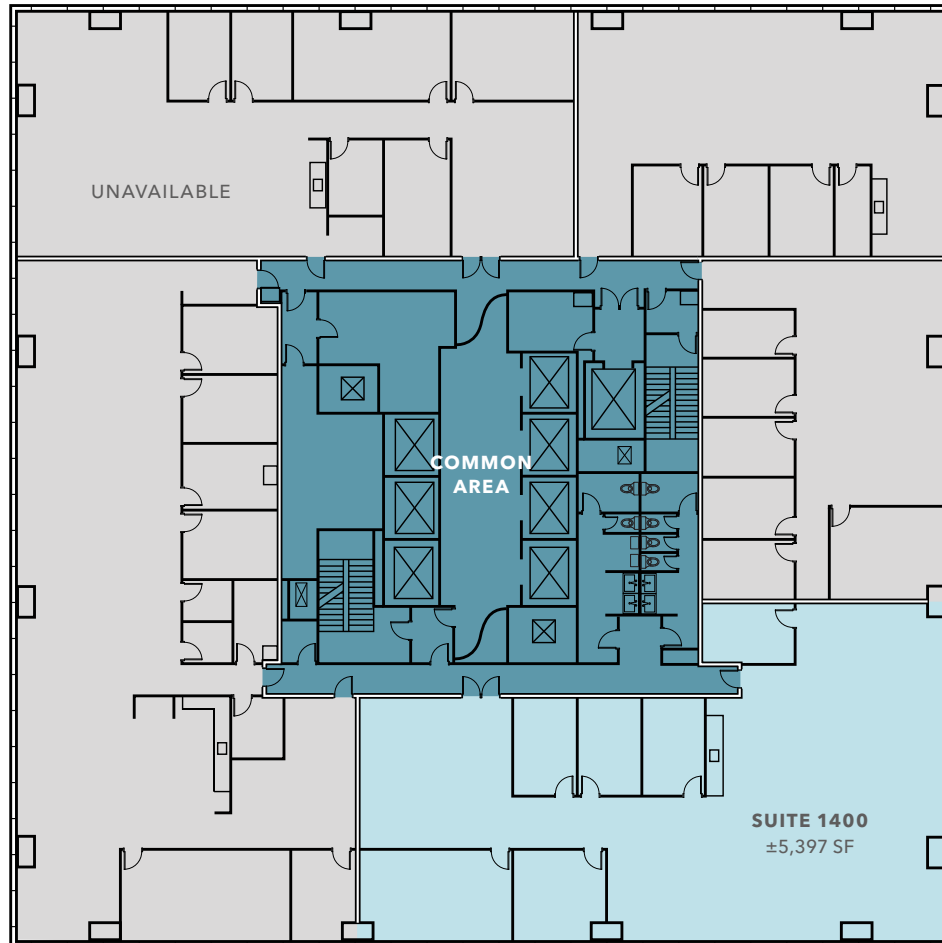


DRY CLEANING
PICKUP AND DROP-
OFF SERVICE



ON-SITE CAFE
AND STATE-OF-
THE-ART FITNESS
CENTER

FLOOR PLAN



±5,397 SF

AVAILABLE

NOW

AVAILABLE

11/30/27

END OF SUBLEASE TERM

LEGEND

- Suite 1400
- Common Area
- Unavailable



200 SPECTRUM CENTER



200 SPECTRUM CENTER

For more information on this property, please contact

ERIC TSE
949.557.5018
eric.tse@kidder.com
LIC N° 01476614

KIDDER.COM

This information supplied herein is from sources we deem reliable. It is provided without any representation, warranty, or guarantee, expressed or implied as to its accuracy. Prospective Buyer or Tenant should conduct an independent investigation and verification of all matters deemed to be material, including, but not limited to, statements of income and expenses. Consult your attorney, accountant, or other professional advisor. All Kidder Mathews designs are the sole property of Kidder Mathews. Branded materials and layouts are not authorized for use by any other firm or person.

