

257 S LA CIENEGA  
BEVERLY HILLS, CA 90211

SECOND GENERATION  
CAFE SPACE AVAILABLE



Brandon Cohan | brandon@bcre.la | 310 654 0200  
Brandon Zarrabi | zarrabi@bcre.la | 310 492 3597

**BC** BRANDON COHAN  
REAL ESTATE // BCRE.LA



1570 SF second generation cafe  
space - former Strabucks

Brandon Cohan  
Brandon Zarrabi

brandon@bcre.la  
zarrabi@bcre.la

310 654 0200  
310 492 3597

**BC** BRANDON COHAN  
REAL ESTATE // BCRE.LA

Down the street from Fogo De Chao, Genwa Korea and Cedars Sinai Dermatology and more restaurants and medical offices



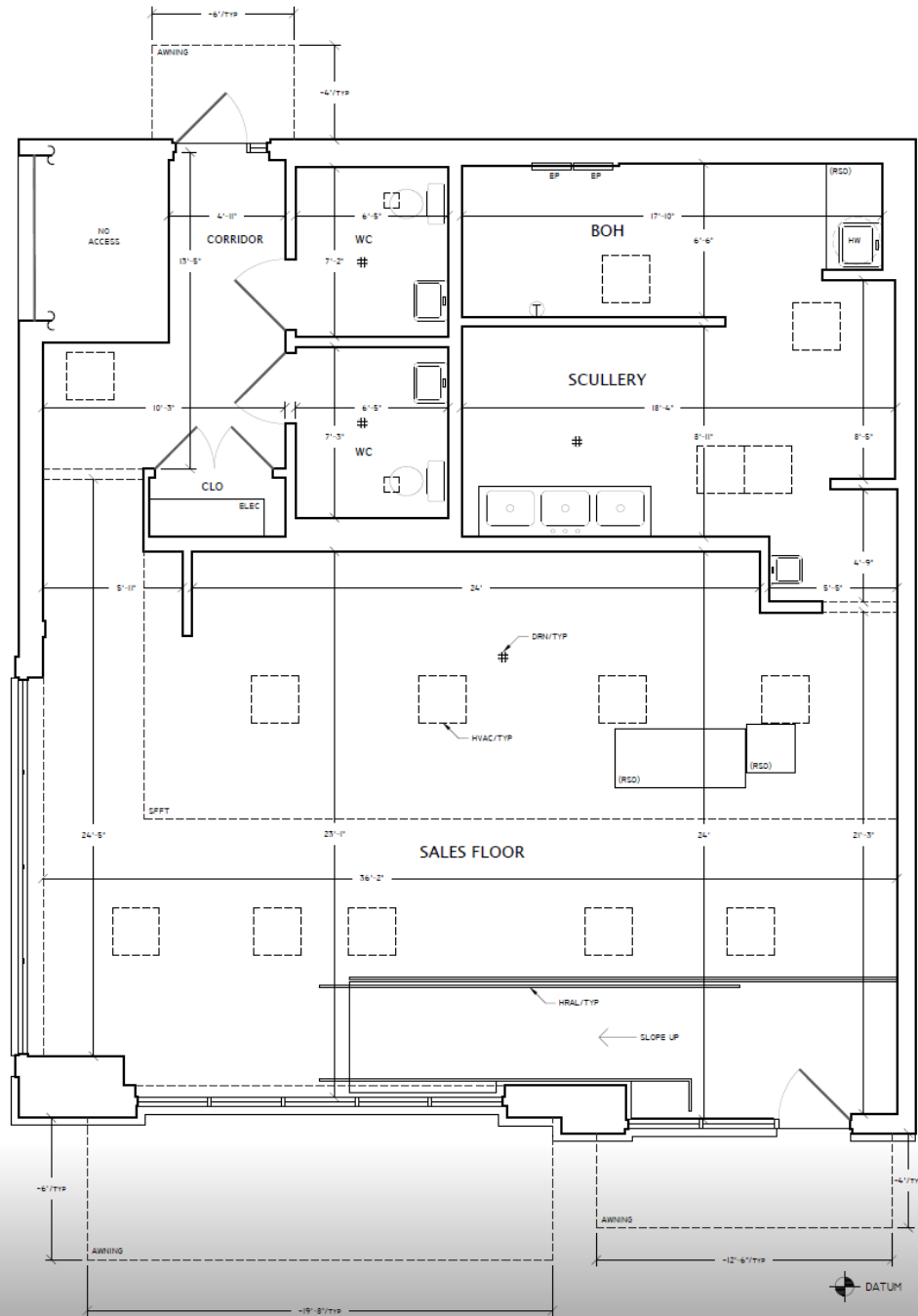
Brandon Cohan | brandon@bcre.la | 310 654 0200  
Brandon Zarrabi | zarrabi@bcre.la | 310 492 3597

**BC** BRANDON COHAN  
REAL ESTATE // BCRE.LA

Public parking available next to and behind the building

Brandon Cohan | brandon@bcre.la | 310 654 0200  
Brandon Zarrabi | zarrabi@bcre.la | 310 492 3597

**BC** BRANDON COHAN  
REAL ESTATE // BCRE.LA



257 S LA CIENEGA  
BEVERLY HILLS, CA 90211

SECOND GENERATION  
CAFE SPACE AVAILABLE



Brandon Cohan | brandon@bcre.la | 310 654 0200  
Brandon Zarrabi | zarrabi@bcre.la | 310 492 3597

**BC** BRANDON COHAN  
REAL ESTATE // BCRE.LA