



KLABIN

A member of the CORFAC International network

17600 SANTA FE AVENUE
RANCHO DOMINGUEZ, CA 90220



Property Features

- 140,693 Sq. Ft. Building
- 378,598 Sq. Ft. Land
- 34 Dock High Positions
- 63 Trailer Storage Positions
- 32' Clear Height
- ESFR Sprinkler System
- 4000 Amps
- 9,803 Sq. Ft. Office
- 158 Auto Parking Spaces

Industrial for Lease

140,693
SQUARE FEET

DAVID A. PRIOR, SIOR

dprior@klabin.com
DRE #00707919

TODD N. TAUGNER, SIOR

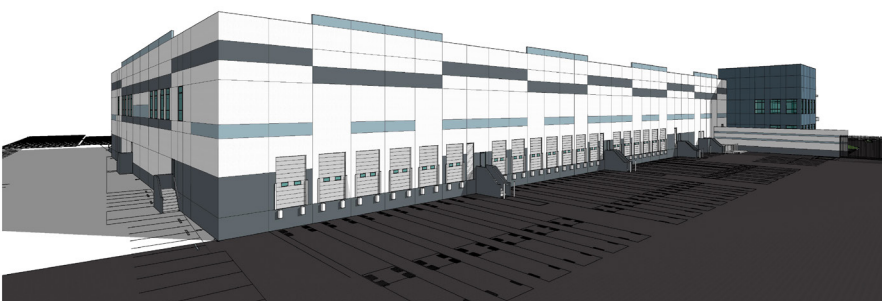
toddt@klabin.com
DRE #00870018

FRANK J.H. SCHULZ, SIOR

franks@klabin.com
DRE #01455172

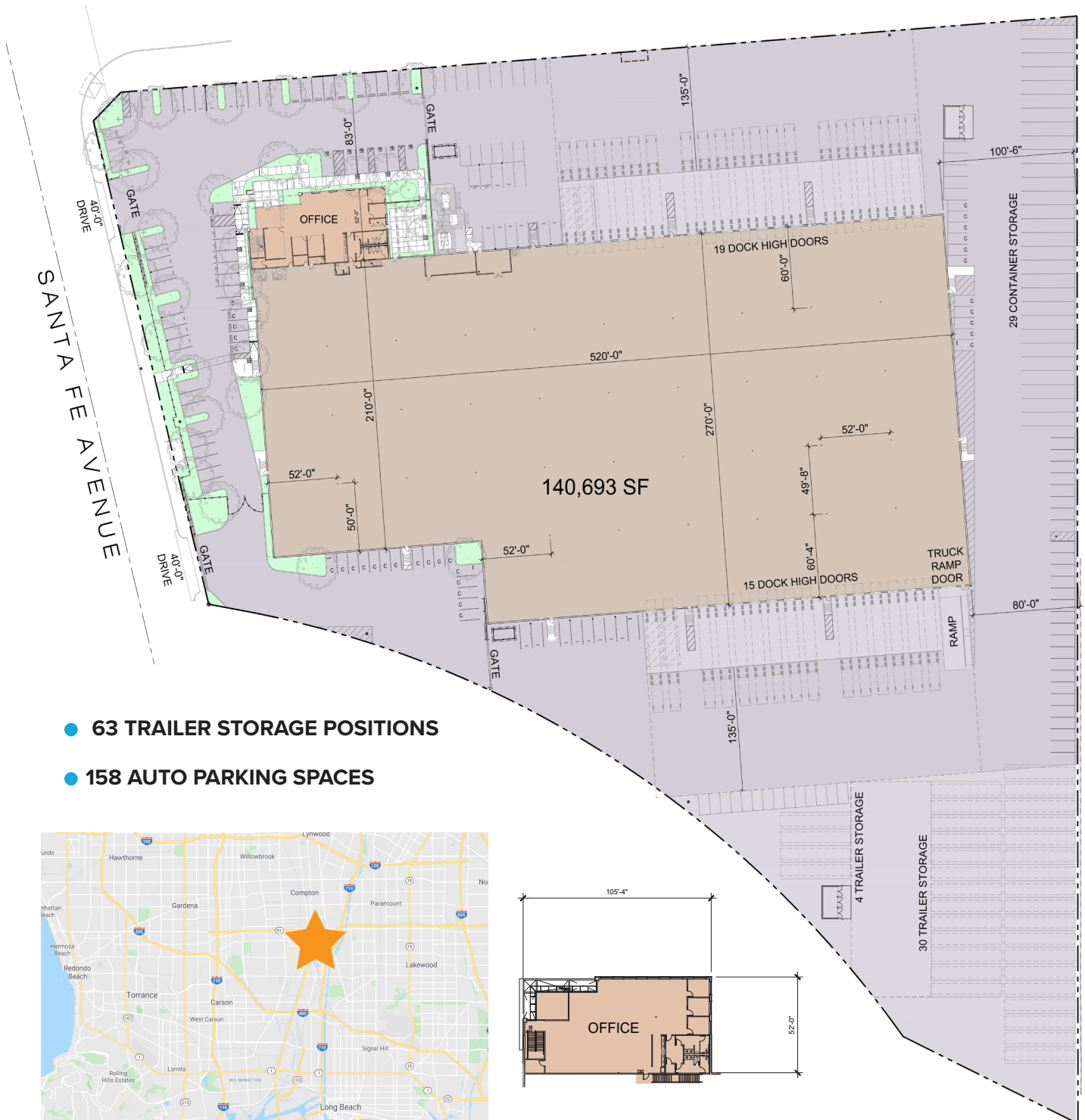
NICK BUSS, SIOR

nickb@klabin.com
DRE #02086889

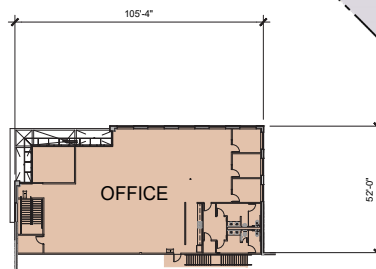
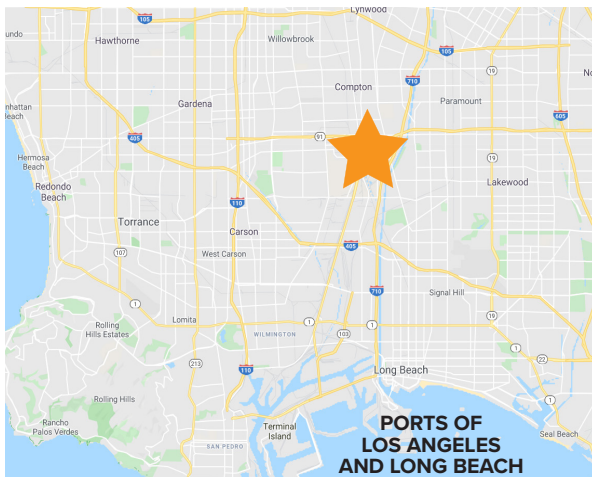


17600 SANTA FE AVENUE

RANCHO DOMINGUEZ, CA 90220



- 63 TRAILER STORAGE POSITIONS
- 158 AUTO PARKING SPACES



19700 S. Vermont Avenue, Suite 100, Torrance, CA 90502
 310.329.9000 | 310.329.9088 fax
 Corporate DRE 00824993



KLABIN.COM