



±2,914 SF FLEX INDUSTRIAL CONDO FOR LEASE

42210 ROICK DRIVE, SUITE 6 | TEMECULA, CA

- ±2,914 Flex Industrial Condo For Lease
- Office = ±1,817 SF
- Parking Ratio = 1.22/1,000 SF
- Reception Area, 4 Private Offices, 2 Restrooms
- Modern Office Design Equipped with Interior Glass Doors
- 18' Clear Height
- (1) 10x12 GL Door
- 200 AMP 120/208v 3p



\$1.45 PSF/GRS/MONTH

FOR MORE INFORMATION, CONTACT:

MICHAEL W. STRODE,
MBA, CCIM, SIOR
951.445.4508
mstrode@leetemecula.com
DRE#00798900

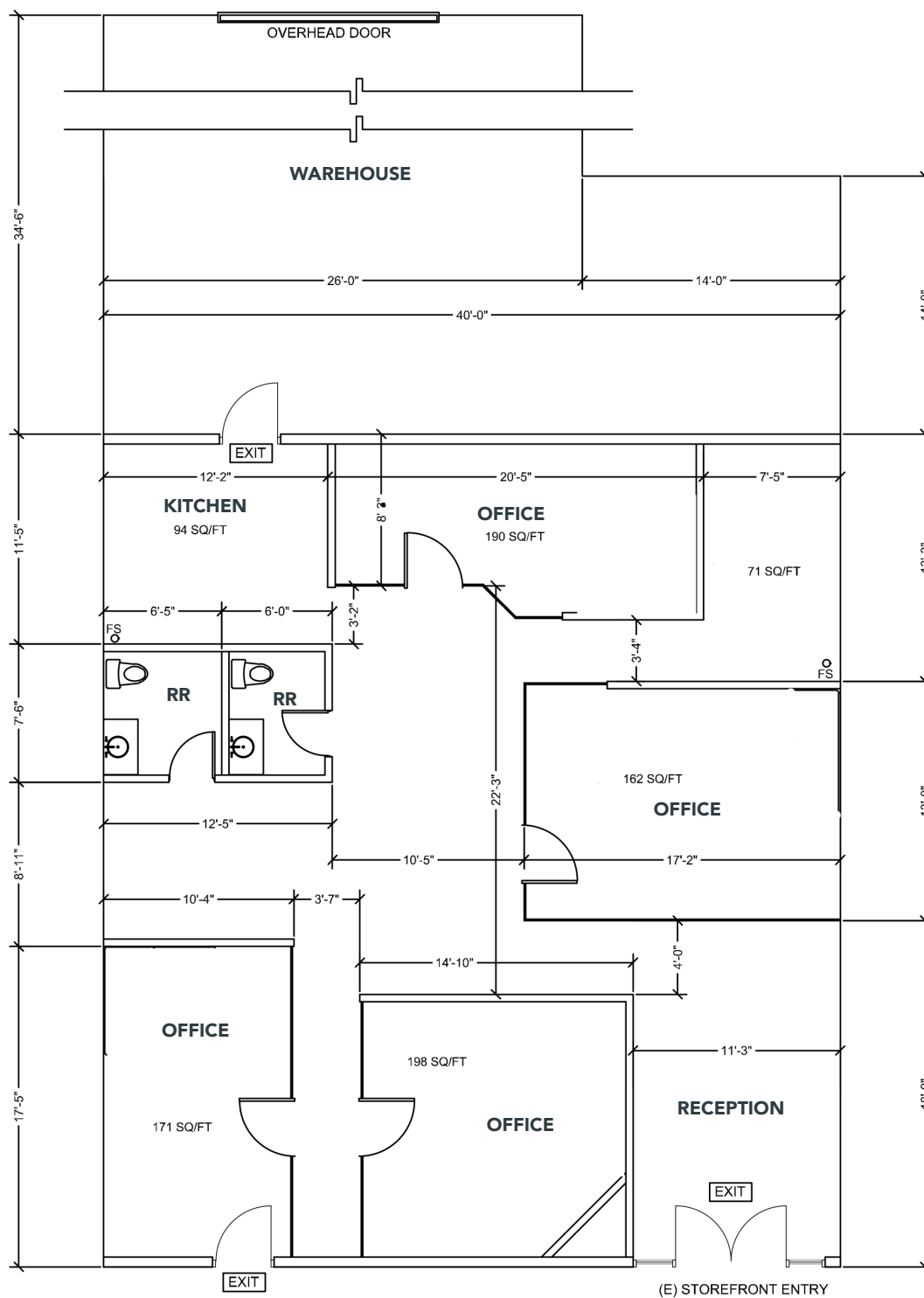
CONNOR STRODE
951.445.4529
cstrode@leetemecula.com
DRE#02170137



No warranty or representation has been made to the accuracy of the foregoing information. Terms of sale or lease and availability are subject to change or withdrawal without notice. Lee & Associates Commercial Real Estate Services, Inc. - Temecula. 25240 Hancock Avenue, Suite 100 - Murrieta, CA 92562 | Corporate ID# 01048055

±2,914 SF FLEX INDUSTRIAL CONDO FOR LEASE

42210 ROICK DRIVE, SUITE 6 | TEMECULA, CA



FOR MORE INFORMATION, CONTACT:

MICHAEL W. STRODE,
MBA, CCIM, SIOR
951.445.4508
mstrode@leetemecula.com
DRE#00798900

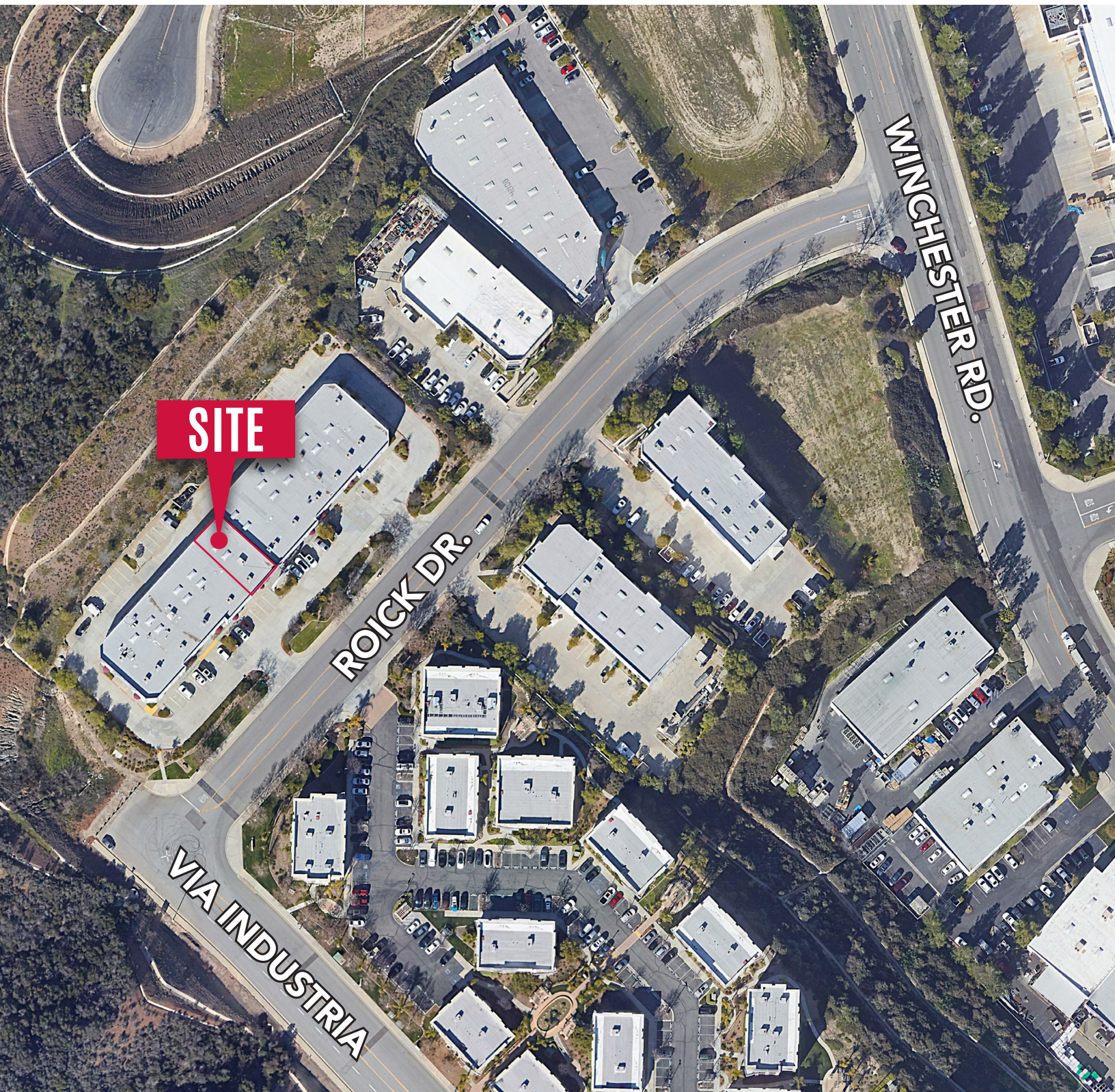
CONNOR STRODE
951.445.4529
cstrode@leetemecula.com
DRE#02170137



No warranty or representation has been made to the accuracy of the foregoing information. Terms of sale or lease and availability are subject to change or withdrawal without notice. Lee & Associates Commercial Real Estate Services, Inc. - Temecula. 25240 Hancock Avenue, Suite 100 - Murrieta, CA 92562 | Corporate ID# 01048055

±2,914 SF FLEX INDUSTRIAL CONDO FOR LEASE

42210 ROICK DRIVE, SUITE 6 | TEMECULA, CA



FOR MORE INFORMATION, CONTACT:

MICHAEL W. STRODE,
MBA, CCIM, SIOR
951.445.4508
mstrode@leetemecula.com
DRE#00798900

CONNOR STRODE
951.445.4529
cstrode@leetemecula.com
DRE#02170137

LEE & ASSOCIATES
COMMERCIAL REAL ESTATE SERVICES

No warranty or representation has been made to the accuracy of the foregoing information. Terms of sale or lease and availability are subject to change or withdrawal without notice. Lee & Associates Commercial Real Estate Services, Inc. - Temecula. 25240 Hancock Avenue, Suite 100 - Murrieta, CA 92562 | Corporate ID# 01048055