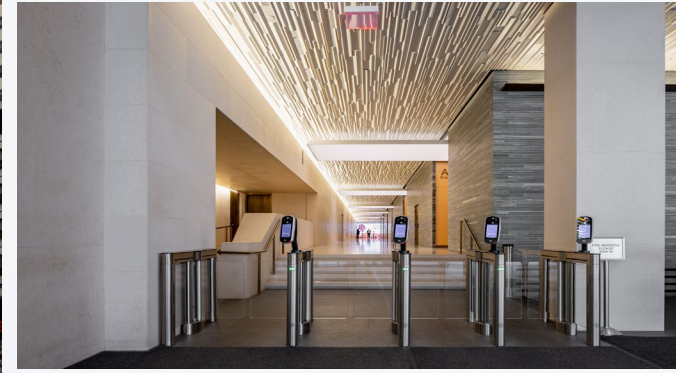


*As exclusive sublease agent, JLL is pleased to present the following sublease opportunity:*

# 277 Park Avenue

**For Sublease: Partial 20<sup>th</sup> Floor**

**Plug and Play Space: 11,117 RSF**



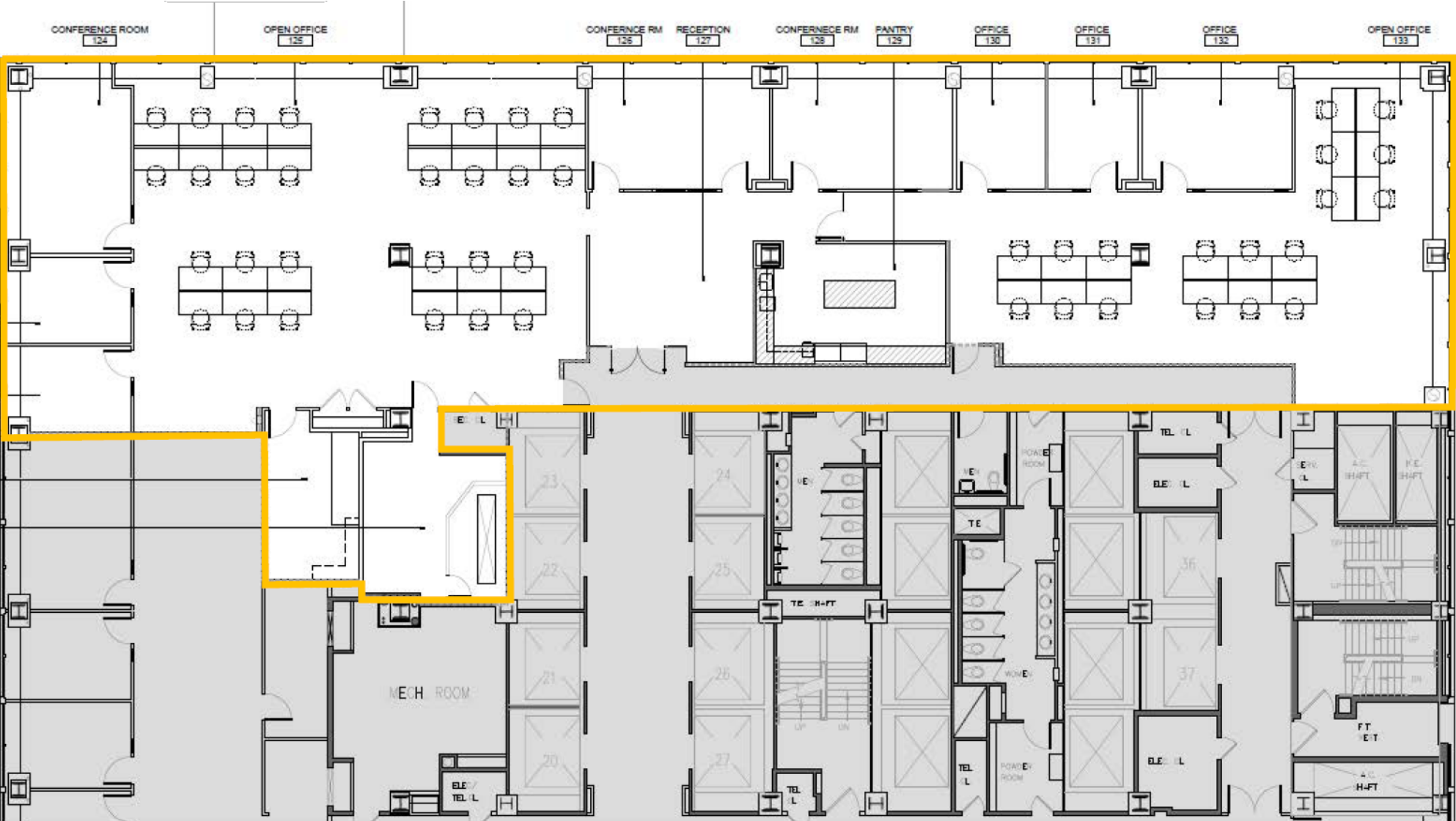
*As exclusive sublease agent, JLL is pleased to present the following sublease opportunity:*

Floor / Area Partial 20<sup>th</sup> floor – 11, 117 RSF

Term Through February 2028



Floor Plan - Partial 20<sup>th</sup> floor – 11, 117 RSF



For Leasing Information,  
Please Contact:

**VALENTIN STOBETSKY**

Tel +1 212 812 5929

Cell +1 718 839 3192

Email: [valentin.stobetsky@jll.com](mailto:valentin.stobetsky@jll.com)

**EVAN MARGOLIN**

Tel +1 212 479 9985

Cell +1 917 653 5715

Email: [evan.margolin@jll.com](mailto:evan.margolin@jll.com)

