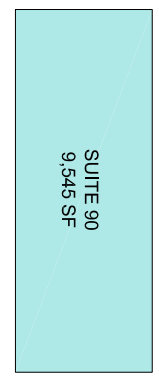
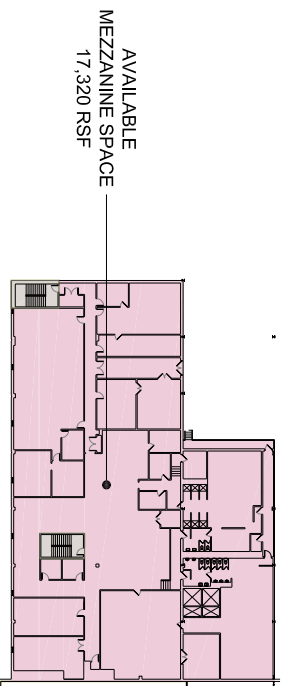


FIRST FLOOR PLAN



OUTBUILDING



MEZZANINE PLAN

MAIN LEVEL AREA CALCULATIONS

SUITE 100	65,577 SF
SUITE 110	192,678 SF
RAIL	15,840 SF
SUITE 120	81,525 SF
SUITE 130	81,260 SF
OFFICE AREA	7,346 SF
MEZZANINE	17,320 SF
COMMON AREA	5,605 SF
BOILER	2,770 SF
OUTBUILDING	9,545 SF
VERTICAL STAIR	
TOTAL	479,466 SF

205 NEWBURY STREET
FRAMINGHAM, MA 01701
508.620.9705 T 508.620.9710 F

PROJECT:
MULTI-TENANT WAREHOUSE
59 DANIEL WEBSTER HIGHWAY
MERRIMACK, NH

TITLE: OVERALL BUILDING PLAN
SCALE: NONE
DATE: 5-2-18

18124

A100