

±1,771 SF INDUSTRIAL SUITE AVAILABLE FOR SUBLEASE
926 SOUTH ANDREASEN DRIVE, SUITE 106, ESCONDIDO, CA 92029



JOSH WEST, SIOR
Senior Vice President/Partner
Lic #01923375 | 858.458.3358 | jwest@voitco.com

Voit
REAL ESTATE SERVICES



PROPERTY SPECIFICATIONS

ADDRESS 926 South Andreasen Drive, Escondido, CA 92029

BUILDING SIZE ±23,321 SF

AVAILABILITY Suite 106: ±1,771 SF

YEAR BUILT 1993

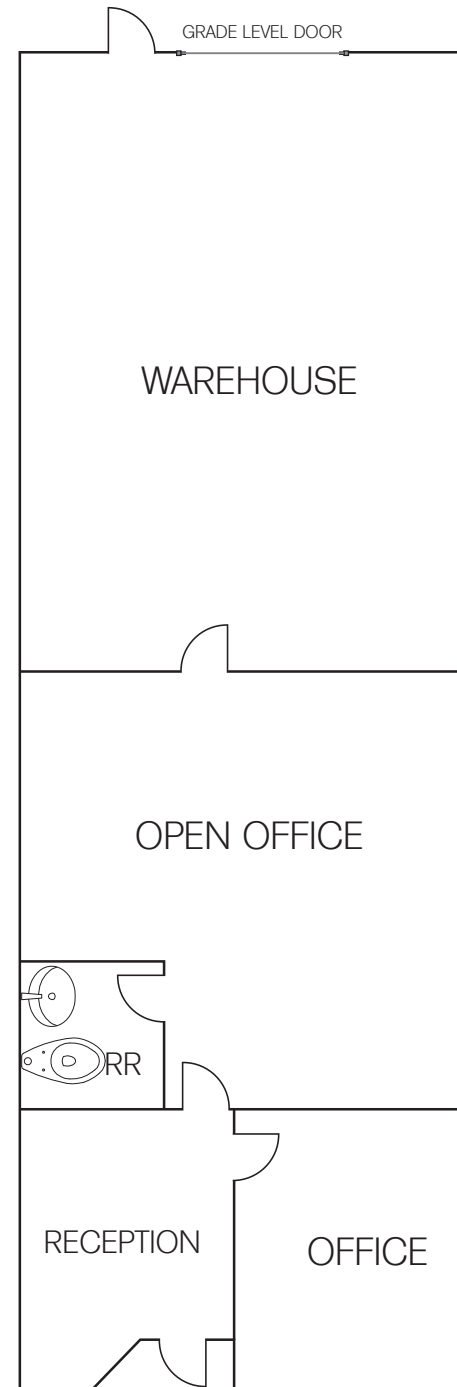
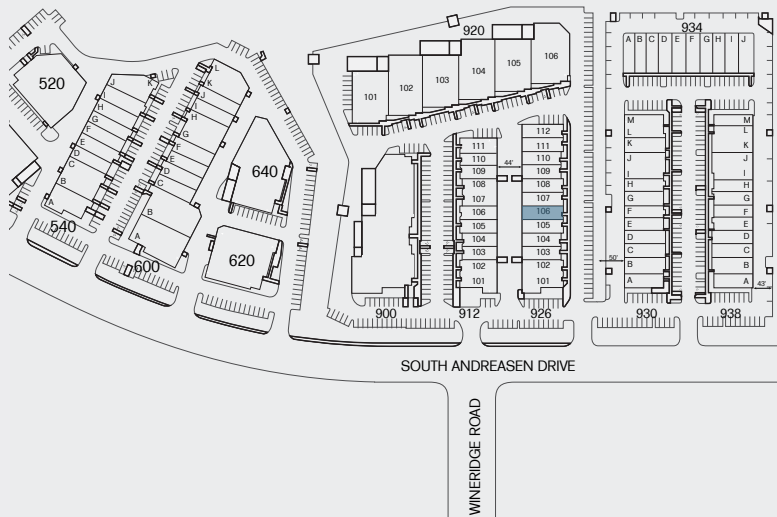
CLEAR HEIGHT ±18'

LOADING One (1) Grade Level

PROPERTY HIGHLIGHTS

- » 13 building business park
- » Recent capital renovations
- » Superior identity and tenant signage
- » Excellent curb appeal and drought tolerant landscaping
- » New exterior paint
- » On-site property management
- » Institutional ownership

- » Suite 106: ±1,771 SF
- » Sublease Rate: \$1.40 NNN
- » Sublease Expiration: January 31, 2028
- » Available: 30 day notice





JOSH WEST, SIOR

Senior Vice President/Partner

Lic #01923375 | 858.458.3358 | jwest@voitco.com

4180 La Jolla Village Drive, Suite 100, La Jolla, California 92037 | 858.453.0505 | Lic.#01991785 | www.voidco.com

Licensed as a Real Estate Salesperson by the DRE. ©2026 Voit Real Estate Services, Inc. All Rights Reserved. The information contained herein has been obtained from sources we deem reliable. While we have no reason to doubt its accuracy, we do not guarantee it.

Voit
REAL ESTATE SERVICES