

FOR LEASE | ± 9,000 SF

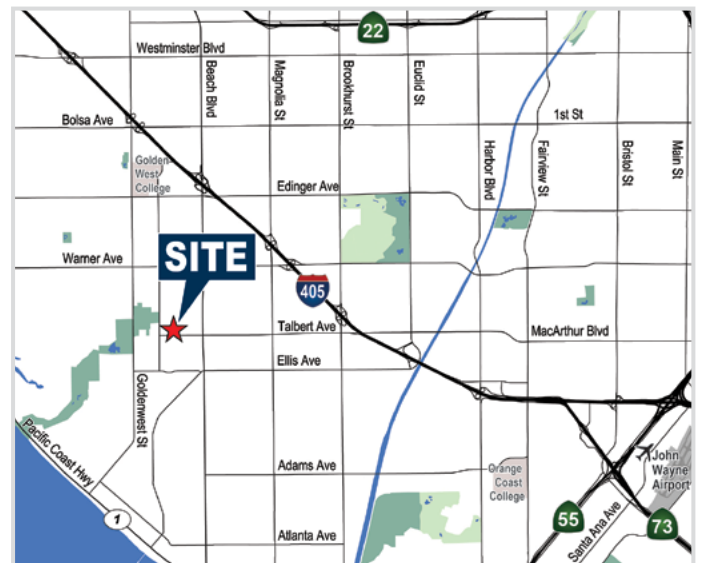
Manufacturing/Warehouse Facility

7521 Talbert Ave., Huntington Beach, CA



PROPERTY FEATURES

- Excellent Frontage on Talbert Avenue
- Approximately ±2,700 SF of Office Space
- 400 Amps of Power
- 17' Warehouse Clearance
- Fire Sprinklered
- One (1) Ground Level Door
- Fenced Yard Possible
- 2:1,000 Parking Ratio
- Good Freeway Access



MIKE BOUMA, SIOR
Senior Vice President
714.935.2340
mbouma@voitco.com
Lic. #01070753

SHAWN FROME
Associate
714.935.2321
sfrome@voitco.com
Lic. #02442004

Voit
REAL ESTATE SERVICES

BC
BOUMA CAPUTO

FOR LEASE | ± 9,000 SF

Manufacturing/Warehouse Facility

7521 Talbert Ave., Huntington Beach, CA

SITE PLAN



*Site plan not to scale.

MIKE BOUMA, SIOR
Senior Vice President
714.935.2340
mbouma@voitco.com
Lic. #01070753

SHAWN FROME
Associate
714.935.2321
sfrome@voitco.com
Lic. #02442004

Voit
REAL ESTATE SERVICES

BC
BOUMA CAPUTO

2400 E. Katella Ave., Suite 750, Anaheim, CA 92806 • 714.978.7880 • 714.978.9431 Fax • Lic #01991785

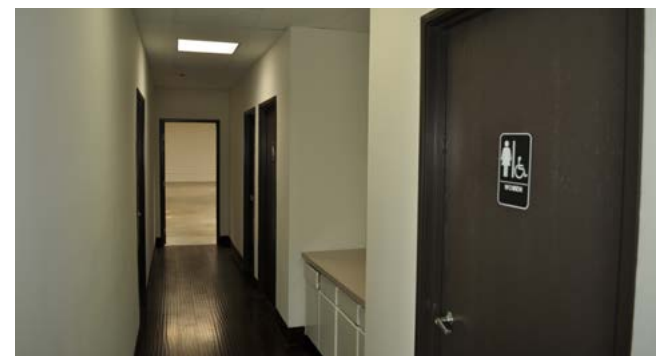
www.boumacaputo.com

Licensed as Real Estate Salespersons by the DRE. The information contained herein has been obtained from sources we deem reliable. While we have no reason to doubt its accuracy, we do not guarantee it. ©2019 Voit Real Estate Services, Inc. All Rights Reserved.

FOR LEASE | ± 9,000 SF

Manufacturing/Warehouse Facility

7521 Talbert Ave., Huntington Beach, CA



MIKE BOUMA, SIOR
Senior Vice President
714.935.2340
mbouma@voitco.com
Lic. #01070753

SHAWN FROME
Associate
714.935.2321
sfrome@voitco.com
Lic. #02442004

Voit
REAL ESTATE SERVICES

BC
BOUMA CAPUTO

2400 E. Katella Ave., Suite 750, Anaheim, CA 92806 • 714.978.7880 • 714.978.9431 Fax • Lic #01991785

www.boumacaputo.com

Licensed as Real Estate Salespersons by the DRE. The information contained herein has been obtained from sources we deem reliable. While we have no reason to doubt its accuracy, we do not guarantee it. ©2019 Voit Real Estate Services, Inc. All Rights Reserved.