

# Second Generation Restaurant For Sublease

5856 W. Manchester Ave., Los Angeles, CA 90045

5,000 SF

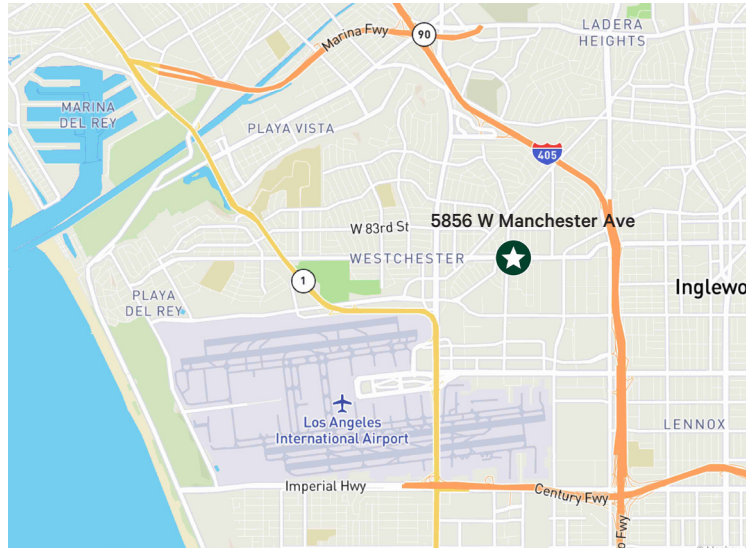
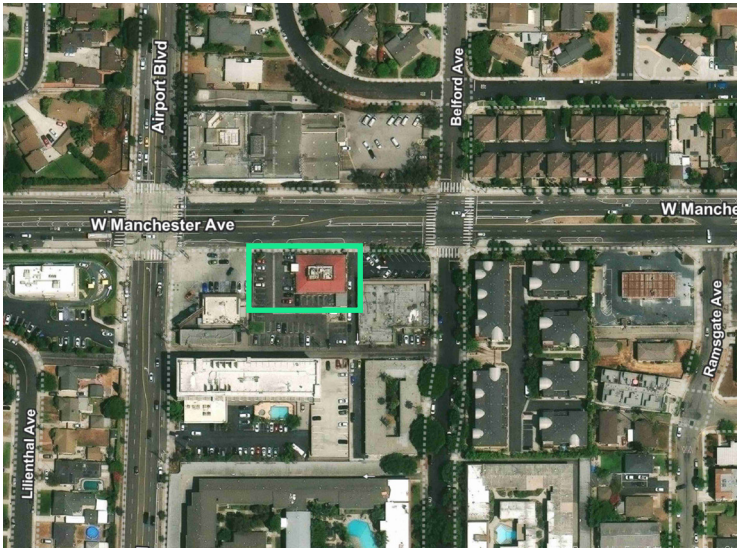


## Property Details

- + **Rate:** Negotiable, call broker for details
- + **Term:** Lease expires May 31st, 2028 with the possibility of additional term
- + **Included:** All FF&E to remain
- + **Available:** Immediately
- + **Close Proximity:** LAX, I-405, I-1 & I-105
- + **Traffic Volume:** 25,858 (W. Manchester & Airport Blvd)
- + **Zoning:** LAC2

5856 W Manchester Ave.  
Los Angeles, CA 90045

Available  
(Do Not Disturb Tenant)



## Contact Us

**Gary Reed**  
Senior Vice President  
+1 917 533 7774  
G.Reed@cbre.com  
Lic. 02071821

© 2026 CBRE, Inc. All rights reserved. This information has been obtained from sources believed reliable, but has not been verified for accuracy or completeness. You should conduct a careful, independent investigation of the property and verify all information. Any reliance on this information is solely at your own risk. CBRE and the CBRE logo are service marks of CBRE, Inc. All other marks displayed on this document are the property of their respective owners, and the use of such logos does not imply any affiliation with or endorsement of CBRE. Photos herein are the property of their respective owners. Use of these images without the express written consent of the owner is prohibited.

