

FOR LEASE **Santa Rosa**

Fountaingrove Executive Center



Santa Rosa's Most Prestigious Submarket



FOR LEASE **Santa Rosa**
Fountaingrove Executive Center



**TWO SUITES AVAILABLE
OFFICE SPACE
AVAILABLE**

Type:
Class A Office

Address:
**3562 Round Barn Circle
Santa Rosa, CA**

Range of Available SF:
**Third Floor: 5,249 & 7,844
Combined: 13,093**

of Floors: Three (3)

DESCRIPTION

Suites 300 & 330 offer the perfect mix of private office and open space with an extensive glass line. The space is accessed directly off of the elevator for great tenant identity.

LOCATION

3562 Round Barn Circle is just ten minutes from Sonoma County Airport. The center's close proximity to Highway 101 means tenants can enjoy the nearby Coddington Mall, Fountainrove Golf and Athletic Club, Wells Fargo Center for the Arts as well as a wide selection of retail, restaurants and other services.

AMENITIES

- Expansive floor to ceiling glass line
- High-speed technology access
- 10' finished ceiling height
- Restrooms with showers and lockers
- Space planning flexibility
- High quality building standard finishes

KEY TENANTS

Morgan Stanley
Pisenti & Brinker
NBC Services



EXCLUSIVELY MARKETED BY:
Shawn Johnson
DRE#: 00835502

FOR LEASE **Santa Rosa**
Fountaingrove Executive Center



EXCLUSIVELY MARKETED BY:
Shawn Johnson
DRE#: 00835502

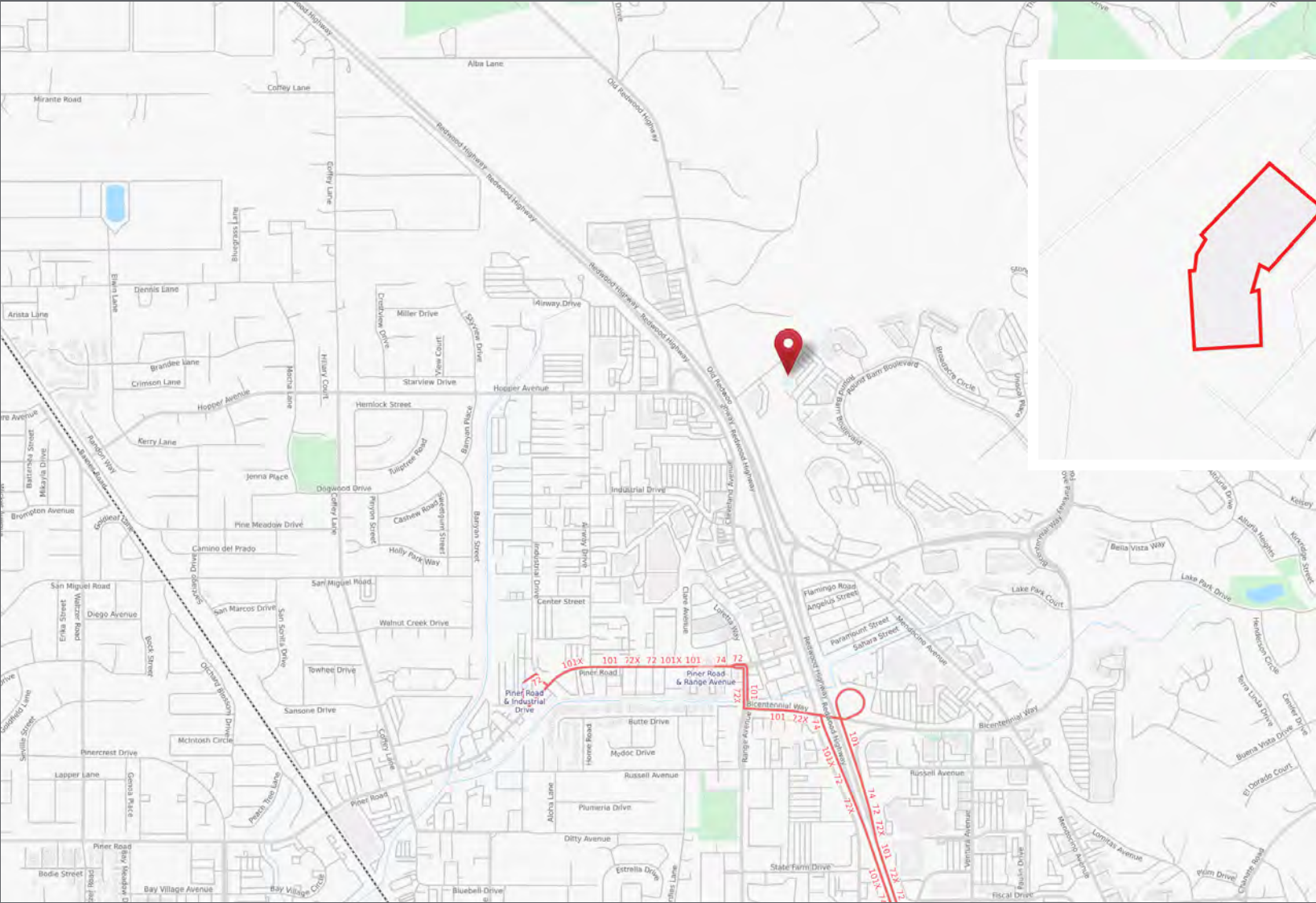
FOR LEASE **Santa Rosa**
Fountaingrove Executive Center



EXCLUSIVELY MARKETED BY:
Shawn Johnson
DRE#: 00835502

FOR LEASE **Santa Rosa**

Fountaingrove Executive Center



EXCLUSIVELY MARKETING BY:
Shawn Johnson
DRE#: 00835502

FOR LEASE **Santa Rosa**
Fountaingrove Executive Center

5,249 - 7,844 RSF (Can be combined)

3562 Round Barn Circle
Third Floor

Suite 330: 5,249 SF
Suite 300: 7,844 SF
Combined: 13,093 SF

